

The Small Cruise Ship Collection

www.small-cruise-ships.com

small-cruise-ships.com

info@small-cruise-ships.com

WONDERS OF THE HIMALAYAS - 16 NIGHT LAND & RIVER EXPEDITION

Explore the mystical Eastern Himalayas on this new cruise and land tour with Pandaw. Discover the Kingdom of Bhutan including the famous cliff-top monasteries and the unique way of life that remains largely unchanged and un-influenced by the modern world. From Bhutan, travel to North Eastern India and Assam for a 7-night river expedition along the Brahmaputra River, including jeep safari at Kaziranga National Park. The newest Land & Cruise Tour from Pandaw is a true expeditionary adventure that is not to be missed. Note: Medium fitness is required for a soft hike in Bhutan. The weather in Bhutan and Assam can be very cold during winter months. Please check the average temperatures for your departure date and pack accordingly. Please send a copy of your passport page to our reservations team immediately after you make a booking for this tour so that your Bhutan visa and flight to Guwahati can be arranged accordingly. From September 2024, Pandaw is happy to announce that our India expeditions will be all-inclusive, with complimentary local beers, spirits, mixers and soft drinks for all guests. Also included free of charge is select house wines during lunch and dinner only. Subject to availability.



ITINERARY

DAY 1 ARRIVAL PARO

Welcome to Bhutan! Upon arrival you will be met by your local guide and offered a Tashi Khaddar - a traditional way to greet

The Small Cruise Ship Collection
www.small-cruise-ships.com

01432 507 280 (within UK)

info@small-cruise-ships.com | small-cruise-ships.com



The Small Cruise Ship Collection

www.small-cruise-ships.com

small-cruise-ships.com

info@small-cruise-ships.com

guests to Bhutan. We then drive to Thimpu, the capital city of Bhutan through the scenic Paro Valley, around 4 hours total. Upon arrival to Thimpu, check into your hotel before beginning your Bhutan adventure with a visit to the National Memorial Chorten. This prominent landmark serves as an ideal spot for engaging with locals who flock here to circumambulate the chorten, spin the large red prayer wheels, and offer their prayers at a small shrine within the complex. Before heading back to your hotel, take a leisurely stroll around Thimpu's main street and markets soaking in the vibrant atmosphere.

DAY 2 THIMPU

Following breakfast, make a brief drive north of the town to reach Buddha Dordenma, situated atop a hill within the serene Kuenselphodrang Nature Park. This remarkable statue brings to life an ancient prophecy originating from the 8th century A.D., which was unearthed by Tertön Pema Lingpa, a discoverer of religious treasures. It is believed that this statue emits an aura of tranquillity and joy, extending its influence to the entire world. Afterwards we take a short hike to Changangkha Lhakhang, an easy walk of around 1.5 hours where you will be greeted by a magnificent sight of hundreds of prayer flags waving in the breeze, creating a colourful and spiritual welcome. After visiting the temple at the end of the hike, we head towards The Postal Museum to see Bhutan's collection of rare and unique stamps. After lunch we continue on the highlights tour of Thimpu with visits to the Textile Museum, Centenary Farmers Market and Zilkha Nunnery before ending the day at Trashichhoedzong, often referred to as the 'fortress of the glorious religion.' This remarkable edifice serves as the heart of both government and religion in Bhutan, housing the monarch's throne room and serving as the seat of the Je Khenpo, or Chief Abbot. Return to your hotel to unwind for the evening.

DAY 3 THIMPU - PUNAKHA

Following breakfast, we will journey up to the picturesque Dochu-la pass, standing at an elevation of 3,088 meters. Here, we'll pause briefly to relish the panoramic views and appreciate the adorned chorten, mani wall, and fluttering prayer flags that adorn this high-altitude vantage point. We will witness a traditional prayer flag hoisting ceremony at Dochula before continuing our journey towards Punakha.

After a delightful lunch, we will visit the majestic Punakha Dzong, often referred to as the 'Palace of Great Happiness.' Following the dzong visit, we'll embark on a short excursion to Chimi Lhakhang, perched on a hillock in the heart of the valley and widely known as the "temple of fertility." It's believed that couples seeking to conceive a child can receive blessings here, often resulting in the fulfilment of their wish. The trail takes you across rice fields to the charming settlement of Pana, which translates to 'field.' Exploring the village near the temple offers unique glimpses into the daily life and traditions of the local villagers.

In the evening, enjoy a leisurely stroll in and around Punakha town.

DAY 4 PHUNAKA - PARO

After breakfast drive along the scenic highway to Paro before checking into your hotel. In the afternoon we will visit Ta Dzong, initially constructed as a watchtower and now housing the National Museum. The museum boasts an extensive collection that includes antique thangkha paintings, textiles, weaponry and armor, household artifacts, and a diverse assortment of natural and historical treasures. The Ta Dzong visit will be immediately followed by a short walk along the trail leading to Rinpung

The Small Cruise Ship Collection

www.small-cruise-ships.com

01432 507 280 (within UK)

info@small-cruise-ships.com | small-cruise-ships.com



The Small Cruise Ship Collection

www.small-cruise-ships.com

small-cruise-ships.com

info@small-cruise-ships.com

Dzong, also known as Paro Dzong, which translates to the "fortress of the heap of jewels." This dzong boasts a long and captivating history. Along the wooden galleries that line the inner courtyard, you'll find exquisite wall paintings depicting Buddhist tales, such as the four friends, the old man of long life, the wheel of life, scenes from the life of Milarepa, Mount Sumeru, and cosmic mandalas.

In the evening, we'll head to Dema Farmhouse for a delightful dinner. At the farmhouse, you'll have the opportunity to experience Bhutan's national sport, archery, and immerse yourself in the local rural culture. Bhutanese farmhouses are renowned for their vibrant colors, intricate decorations, and their traditional construction methods, which eschew the use of a single nail. The majority of Bhutan's population still maintains a way of life that has endured for centuries, residing in modest, secluded farms and hamlets, enveloped by terraced fields of rice, maize, and buckwheat.

DAY 5 TAKTSANG MONESTARY

Drive to Satsam Chorten for a soft hike to Taktsang Monastery, also known as Tiger's Nest. The monastery is perched on a rocky ledge with a sheer drop of nearly 800m, overlooking the Paro Valley and the river. Recognized as one of the most hallowed places, it was visited by Zhabdrung Ngawang Namgyal in 1646 and is a must-visit for all Bhutanese at least once in their lifetime. The hike takes 4-5 hours round trip. While en route back to Paro town, make a stop at the 7th century Kyichu Lhakhang, one of the 108 temples constructed in the Himalayas by Tibetan King Songtsen Gampo. The establishment of this temple marks the introduction of Buddhism in Bhutan.

This evening, take part in a traditional blessing & butter lamp ceremony at a village monastery. This is a sacred and deeply spiritual practice that holds significant importance in the country's Buddhist culture. Such ceremonies are often conducted in monasteries, temples, and sacred sites, attracting devotees seeking blessings, protection, and spiritual guidance. During the blessing ceremony, Buddhist monks, adorned in their vibrant robes, recite powerful prayers and mantras, invoking the blessings of Buddha and other enlightened beings. While lighting of butter lamps is a symbolic act representing the illumination of wisdom and dispelling darkness or ignorance.

DAY 6 PARO - GUWAHATI

After breakfast transfer Paro International Airport for your flight to Guwahati. Free time in the evening to relax.

DAY 7 GUWAHATI

After breakfast, transfer to your ship.

Embark you Pandaw vessel in Guwahati, gateway to Assam. Meet your crew for the next 7-nights and set sail upstream onto the Mighty Brahmaputra River.

DAY 8 SUTARGAON RIVER VILLAGE

Today we stop at a local village consisting of migrant populations that have settled and been provided with official status by the government. Their charming village is the perfect place to learn about life along such a dramatically changeable river.

DAY 9 SILGHAT AND SAFARI

The Small Cruise Ship Collection

www.small-cruise-ships.com

01432 507 280 (within UK)

info@small-cruise-ships.com | small-cruise-ships.com



The Small Cruise Ship Collection

www.small-cruise-ships.com

small-cruise-ships.com

info@small-cruise-ships.com

Setting sail early morning we reach Silghat, at the doorstep of Kaziranga National Park. We make our first venture into this park in the afternoon in search of the reserve's most famous inhabitant, the Royal Bengal Tigers for which the park boasts the highest density of any place in the world. Tiger spotting is extremely rare but chances to see Kaziranga's other famous inhabitants are abundant.

DAY 10 KAZIRANGA NATIONAL PARK

We leave the ship in the early morning for our second Jeep safari into Kaziranga National Park. Mornings are the perfect time to spot the Indian One-Horned Rhinos, Buffalos, Elephants plus a host of birdlife, including hornbills and kingfishers. Following your safari, we visit a typical Assamese tea garden and learn about the process from bush to cup. After lunch onboard we sail downstream toward Tezpur and if time permits, visit Bamuni Hills, a 9th century temple complex that lies in ruins overlooking the town.

DAY 11 NAMERI NATIONAL PARK

After an early breakfast we head ashore and drive north toward the state of Arunachal Pradesh to explore our second national Park - Nameri National Park. Here we take a float trip down the Jia - Bhoreli River of around 2 hours and enjoy the abundant birdlife and breathtaking scenery backdropped by the Blue Hills in the Eastern Himalayan range. We return for lunch onboard and set sail downstream.

DAY 12 MYSTICAL MAYANG

Stepping ashore in Mayang, a sizeable village along the shores of the Brahmaputra, we learn about the history of magic and sorcery that was prevalent in the region. We visit the fascinating Mayang museum which explains how various mantras were used

for anything from curing ailments to identifying a thief. We are then welcomed into the home of a local Mayang resident for a discussion and perhaps demonstration of some tricks.

DAY 13 SUALKUCHI SILK WEAVING VILLAGE

Sualkuchi is a major centre for weaving in Assam. Here we learn about the entire silk making production from the cocoon, to spinning and weaving to make the typical saree worn by local women. There is a chance to buy some local silken souvenirs and experience a traditional folk dance before we return to the ship by electric rickshaw.

DAY 14 ARRIVAL BAGDOGRA

After breakfast, disembark the ship and transfer to city hotel or Guwahati airport for your onward journey.

Following breakfast transfer privately for your flight to Bagdogra. Receive a warm Pandaw welcome on arrival into Bagdogra Airport, and journey by road to your accommodation. Spend the rest of the day easing into your magical surroundings or step outside and stroll the main square and mingle with Nepalese, Bhutanese, Tibetan people and domestic Indian tourists.

DAY 15 DARJEELING

Darjeeling's rich tapestry of cultures is yours to explore today. Hop aboard the UNESCO World Heritage-listed small-gauge Darjeeling Himalayan Railway, or "Toy Train", for a breathtaking ride to Ghoom, the world's second highest railway station. The toy train is a marvel of engineering passing through many small towns and is India's oldest mountain railway route. Explore Ghoom Monastery, with its colourful prayer flags fluttering in the wind before returning to town.

The Small Cruise Ship Collection

www.small-cruise-ships.com

01432 507 280 (within UK)

info@small-cruise-ships.com | small-cruise-ships.com



The Small Cruise
Ship Collection

www.small-cruise-ships.com

small-cruise-ships.com

info@small-cruise-ships.com

Continue to the Himalayan Mountaineering Institute, founded in 1954, just after Edmund Hillary and Tenzing Norgay first scaled Everest. Visit the Darjeeling Zoo, home of the Snow Leopard Breeding Centre. Then see locals making handicrafts and carpets at the Tibetan Refugee Centre.

DAY 16 AT LEISURE

Today unwind at your hotel and enjoy the breath-taking scenery on offer or partake in the variety of experiences available from your accommodation.

DAY 17 DEPART BAGDOGRA

Following a leisurely breakfast, leave the snow-tipped peaks and terraced tea plantations of Darjeeling behind and transfer privately to Bagdogra Airport for your onward journey.

Please note:

Itineraries are subject to change.

The Small Cruise
Ship Collection

www.small-cruise-ships.com

01432 507 280 (within UK)

info@small-cruise-ships.com | small-cruise-ships.com

The Small Cruise Ship Collection

www.small-cruise-ships.com

small-cruise-ships.com

info@small-cruise-ships.com

YOUR SHIP: KINDAT PANDAW

YOUR SHIP: Kindat Pandaw

VESSEL TYPE:

LENGTH:

PASSENGER CAPACITY:

BUILT/REFURBISHED:

Kindat Pandaw is a very shallow draft vessel that can go just about anywhere anytime, it is big enough to carry 30-40 passengers with lots of outdoor deck space. The ship has quality mountain bikes for your independent exploration. ACCOMMODATION 8 upper deck, 10 main deck, 170 square feet, finished in teak and brass, AC with individual control, Premium mattresses, Multi-configuration plugs, 24h laundry service WINING & DINING Bistro style dining room with outside seating and air-conditioning inside, Local master chef heading an experienced international culinary team, Semi-buffet breakfast, semi-buffet lunch, and seated theme dinners, Daily lean & light menu options, Complimentary local mineral water, jugged coffee, teas & tisanes, Extensive wine list with premium wines, Welcome drink on arrival, Welcome cocktail, Farewell reception, Theme dinners, 24hrs hospitality bar, Onboard bakery with daily freshly baked breads and rolls ON EXCURSIONS Admissions, Shoe cleaning after excursions, Bottled drinking water, We give away aluminium water bottles, Cold towel service after excursions, Refreshing drink following excursions, 1st aid trained assistant guide to follow all tours and excursions, Quality mountain bikes available for independent exploration SAFETY &

SECURITY All onboard crew is trained and certified as per international marine standards, Fire alarm system in all cabins, public areas and back areas, Fire fighting system in all ship areas, Expert marine superintendent, 24 hrs watch on duty **ONBOARD STAFF** Captain, River Pilot, First Officer, Chief Engineer, 1st Engineer, Electrician, Bosun & nautical crew, Ship manager, Housekeeping, Dining, Bar keeper, Chefs, Local tour guides **PUBLIC SPACES** Guest relation desk, Library with contemporary and classic



literature

The Small Cruise Ship Collection

www.small-cruise-ships.com

01432 507 280 (within UK)

info@small-cruise-ships.com | small-cruise-ships.com



The Small Cruise
Ship Collection

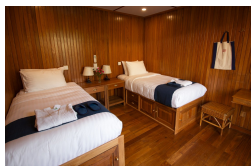
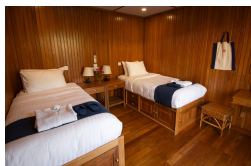
www.small-cruise-ships.com

small-cruise-ships.com

info@small-cruise-ships.com

INSIDE YOUR SHIP

Main Deck Twin Sharing Upper Deck Twin Sharing



The Small Cruise
Ship Collection

www.small-cruise-ships.com

01432 507 280 (within UK)

info@small-cruise-ships.com | small-cruise-ships.com

The Small Cruise Ship Collection

www.small-cruise-ships.com

small-cruise-ships.com

info@small-cruise-ships.com

PRICING

07-Nov-2026 to 23-Nov-2026

Main Deck Twin Sharing	£15295 GBP pp
Upper Deck Twin Sharing	£15582 GBP pp
Main Deck Twin Single Use	£15995 GBP pp
Upper Deck Twin Single Use	£16339 GBP pp

18-Nov-2026 to 04-Dec-2026

Main Deck Twin Sharing	£15295 GBP pp
Upper Deck Twin Sharing	£15582 GBP pp
Main Deck Twin Single Use	£15995 GBP pp
Upper Deck Twin Single Use	£16339 GBP pp

02-Jan-2027 to 18-Jan-2027

Main Deck Twin Sharing	£12746 GBP pp
Upper Deck Twin Sharing	£12985 GBP pp
Main Deck Twin Single Use	£13329 GBP pp
Upper Deck Twin Single Use	£13616 GBP pp

14-Jan-2027 to 30-Jan-2027

Main Deck Twin Sharing	£15295 GBP pp
Upper Deck Twin Sharing	£15582 GBP pp
Main Deck Twin Single Use	£15995 GBP pp
Upper Deck Twin Single Use	£16339 GBP pp

21-Jan-2027 to 06-Feb-2027

Main Deck Twin Sharing	£15295 GBP pp
Upper Deck Twin Sharing	£15582 GBP pp
Main Deck Twin Single Use	£15995 GBP pp
Upper Deck Twin Single Use	£16339 GBP pp

29-Jan-2027 to 14-Feb-2027

Main Deck Twin Sharing	£15295 GBP pp
Upper Deck Twin Sharing	£15582 GBP pp
Main Deck Twin Single Use	£15995 GBP pp
Upper Deck Twin Single Use	£16339 GBP pp

06-Feb-2027 to 22-Feb-2027

Main Deck Twin Sharing	£12746 GBP pp
Upper Deck Twin Sharing	£12985 GBP pp
Main Deck Twin Single Use	£13329 GBP pp
Upper Deck Twin Single Use	£13616 GBP pp

17-Feb-2027 to 05-Mar-2027

Main Deck Twin Sharing	£12746 GBP pp
Upper Deck Twin Sharing	£12985 GBP pp
Main Deck Twin Single Use	£13329 GBP pp
Upper Deck Twin Single Use	£13616 GBP pp

27-Feb-2027 to 15-Mar-2027

Main Deck Twin Sharing	£15295 GBP pp
Upper Deck Twin Sharing	£15582 GBP pp
Main Deck Twin Single Use	£15995 GBP pp
Upper Deck Twin Single Use	£16339 GBP pp



The Small Cruise
Ship Collection

www.small-cruise-ships.com

small-cruise-ships.com

info@small-cruise-ships.com

PRICING

10-Mar-2027 to 26-Mar-2027

Main Deck Twin Sharing	£12746 GBP pp
Upper Deck Twin Sharing	£12985 GBP pp
Main Deck Twin Single Use	£13329 GBP pp
Upper Deck Twin Single Use	£13616 GBP pp