

The Small Cruise Ship Collection

www.small-cruise-ships.com

small-cruise-ships.com

info@small-cruise-ships.com

WONDERS OF SOUTHEAST ASIA SMALL SHIP CRUISE

A route unfolds between Asia's contrasting megacities that will amaze you. Admire the splendour of Brunei and the idyllic scenery of the Philippines - relaxation and adventure in perfect harmony.



ITINERARY

Day 1 Ho Chi Minh City/Vietnam Overnight stay on board

Day 2 Ho Chi Minh City/Vietnam, departure 08.00 hrs

Day 3 Relaxation at sea

Day 4 Muara (Bandar Seri Begawan)/Borneo/Brunei Darussalam, 08.00 – 18.00 hrs

Brunei, a small sultanate full of splendour and nature, lies between the Malaysian cities of Kota Kinabalu and Bintulu. In

The Small Cruise Ship Collection

www.small-cruise-ships.com

01432 507 280 (within UK)

info@small-cruise-ships.com | small-cruise-ships.com



The Small Cruise Ship Collection

www.small-cruise-ships.com

small-cruise-ships.com

info@small-cruise-ships.com

Bandar Seri Begawan, the Sultan resides in Istana Nurul Iman, the largest palace in the world; its marble, gold and precious woods bear witness to the country's wealth. Just a few steps away stands the magnificent Omar Ali Saifuddien Mosque with its golden dome and reflecting moat. Old Brunei awaits you across the river in Kampong Ayer, a charming stilt village with colourful wooden houses lining the wide river. Away from the city, Ulu Temburong National Park beckons with its nature: dense rainforests, exotic animals and hidden waterfalls make it an unforgettable natural paradise that lets you experience Brunei's wild beauty.

Day 5 Kota Kinabalu/Borneo/Sabah/Malaysia, 08.00 – 18.00 hrs

Enjoying a picturesque location on the coast of the South China Sea, Kota Kinabalu welcomes you amidst the backdrop of the imposing Mount Kinabalu, Malaysia's highest mountain. The lively capital of Sabah on Borneo is the ideal starting point for your nature adventure: from here, you can explore the lush rainforests of Kinabalu National Park or reach the idyllic islands of Tunku Abdul Rahman Marine Park by boat. In Kota Kinabalu itself, life pulsates at the Filipino Market, where you can discover fresh seafood, local specialities and handicrafts.

Day 6 Relaxation at sea

Day 7 Sandakan/Borneo/Sabah/Malaysia, 07.00 – 20.00 hrs

Sandakan, on the north-east coast of Borneo, is the gateway to one of Malaysia's most fascinating nature experiences. In the forests surrounding the city, you can witness orangutans in their natural habitat. The Sepilok Orangutan Rehabilitation Centre is dedicated to the protection and care of these endangered primates and gives visitors the opportunity to learn more about their behaviour and conservation projects. Accompanied by the

sounds of the rainforest and the scent of exotic plants, a stay here becomes an unforgettable experience between humankind and nature.

Day 8 Relaxation at sea

Day 9 Tagbilaran/Bohol/Philippines, 07.00 – 19.00 hrs

Tagbilaran, capital of Bohol, is a captivating place thanks to its proximity to the famous Chocolate Hills: a unique formation of 1,268 cone-shaped hills, which look chocolate-brown in the dry season. Picturesque landscapes like the Rajah Sikatuna National Park and the Mag Aso Falls are other natural attractions on the island. Spanish colonial buildings, including the San Pedro Apostol church, are testament to Bohol's cultural history, while the unspoilt beaches and coastlines are an inviting place to spend time relaxing.

Day 10 Mantigue Island/Philippines, 07.00 – 13.00 hrs

Mantigue Island offers white sandy beaches, shady palm trees and crystal-clear waters that are perfect for swimming. Simply sit back and enjoy the scenery or let the explorer in you take over: just off the coast, a colourful underwater paradise boasts vibrant coral reefs, schools of exotic fish and perhaps even sea turtles. Leaving the dream beaches behind, you will find dense rainforest, home to tropical birds, magnificent butterflies and small mammals such as flying foxes. The remote island is a popular retreat for local biodiversity, protected by initiatives to preserve coral reefs and native flora.

Day 11 Cresta de Gallo/Philippines, 12.00 – 19.00 hrs

Cresta de Gallo is a real gem. The long, narrow island delights visitors with its fine sandy bays, endless sandbanks and quiet beaches, which are perfect for swimming and relaxing. Off the

The Small Cruise Ship Collection
www.small-cruise-ships.com

01432 507 280 (within UK)

info@small-cruise-ships.com | small-cruise-ships.com



The Small Cruise Ship Collection

www.small-cruise-ships.com

small-cruise-ships.com

info@small-cruise-ships.com

coast, colourful coral reefs and tropical schools of fish entice visitors to go snorkelling, while lush palm trees and lavish greenery grace the interior of the island. The sea glitters in intense shades of turquoise and blue, birds circle in the sky and colourful butterflies dance among the leaves. A picture-perfect paradise awaits you.

Day 12 Malcapuya Island/Calamian Group/Philippines, 07.30 – 24.00 hrs

Look forward to a very special experience on the fine white sandy beach of the idyllic island of Malcapuya. Virtually pristine and far away from the tourist crowds, it offers pure nature, sun-drenched coastlines and crystal-clear, turquoise-blue water. The on-board Zodiacs take you directly to the beach, where you can enjoy the peace and quiet, relax in the sun or simply soak up the breathtaking surroundings. As the day draws to a close, Malcapuya Island transforms into the idyllic setting of a postcard: the sunset bathes the beach and sea in warm golden tones, creating an unforgettable atmosphere.

Day 13 Coron/Busuanga/Philippines, 07.00 – 14.00 hrs

The lively town of Coron awaits you on Busuanga Island: motorcycles buzz through narrow streets, the smell of grilled fish wafts from street stalls and music drifts from small shops. A fascinating island world with secluded bays, green hills and dazzling marine life is found around the city. From here, the paradise of Coron is not far away - a natural wonder with tranquil lagoons, crystal-clear lakes and green cliffs. Snorkel along colourful reefs, dive to explore mysterious wrecks or hike to viewpoints overlooking the tranquil sea of islands.

Day 14 Manila/Philippines, 06.00 – 19.30 hrs

Manila, the lively capital of the Philippines, was founded by the Spanish in 1571 and was long the centre of colonial

administration. Even today, the mighty walls, old churches and museums in the historic district of Intramuros bear witness to the city's eventful history. Impressive skyscrapers tower over this magnificent heritage, awaiting you with state-of-the-art shopping centres for a shopping experience. During your explorations, be sure to take a detour to the colourful markets or sample the Filipino specialities at the numerous food stalls.

Day 15 Relaxation at sea

Day 16 Hong Kong/China, arrival 18.30 hrs Overnight stay on board

Hong Kong, a former British colony, has grown into one of the world's biggest and most dynamic metropolises. The city is a global financial centre and an important trading hub for the Asian market. With its impressive skyline, lively street markets, luxury shopping centres and exquisite restaurants, Hong Kong offers a rich variety of experiences. The city is a melting pot of cultures, where tradition and modernity meet. These days, Hong Kong plays a major role in international business - in particular, in the areas of finance, trade and technology. You can gather exciting impressions until the evening, because your ship has an overnight lay time here.

Day 17 Hong Kong/China

Please note:

Itineraries are subject to change.

The Small Cruise Ship Collection

www.small-cruise-ships.com

01432 507 280 (within UK)

info@small-cruise-ships.com | small-cruise-ships.com

The Small Cruise Ship Collection

www.small-cruise-ships.com

small-cruise-ships.com

info@small-cruise-ships.com

YOUR SHIP: EUROPA

YOUR SHIP: Europa

VESSEL TYPE:

LENGTH:

PASSENGER CAPACITY:

BUILT/REFURBISHED:

Extensive space for a maximum of 400 guests A crew-to-guest ratio of almost one to one Outside suites only, most with a veranda Five restaurants for the ultimate in culinary indulgence - including THE GLOBE by three-star chef Kevin Fehling Top-class entertainment: experience international artists and experts live on board EUROPA Refresh: new fitness and wellness concepts for even more well-being MS EUROPA is an award-winning luxury cruise ship renowned for setting global standards in refined small-ship cruising. Accommodating a maximum of just 400 guests, the ship offers an intimate and highly personalised experience, supported by an almost one-to-one crew-to-guest ratio. Designed around the concept of casual luxury, EUROPA combines spacious surroundings, attentive service, and elegant all-suite accommodation, with all suites featuring ocean views and most offering private verandas. Onboard, guests can enjoy five exceptional restaurants, including fine dining concepts created in collaboration with acclaimed chefs, alongside world-class entertainment, wellness facilities, and thoughtfully curated enrichment experiences. The ship's smaller size allows access to unique itineraries and exclusive ports beyond the reach of larger vessels, while recent EUROPA Refresh

enhancements have introduced updated fitness and wellness concepts for an even more elevated onboard experience. Blending sophistication, comfort, and flexibility, MS EUROPA delivers a truly premium voyage to destinations



worldwide.

The Small Cruise Ship Collection

www.small-cruise-ships.com

01432 507 280 (within UK)

info@small-cruise-ships.com | small-cruise-ships.com

The Small Cruise Ship Collection

www.small-cruise-ships.com

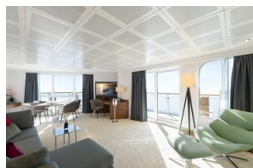
small-cruise-ships.com

info@small-cruise-ships.com

INSIDE YOUR SHIP

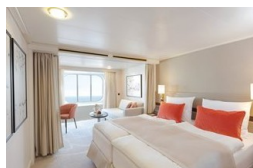
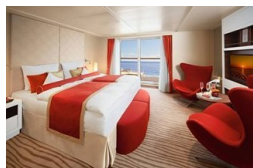
Penthouse Deluxe Suite

Penthouse Grand Suite



SPA Suite

Suite with panorama window



Veranda Suite Cat. 4-5

Veranda Suite Cat. 6-7



The Small Cruise
Ship Collection

www.small-cruise-ships.com

small-cruise-ships.com

info@small-cruise-ships.com

PRICING

14-Feb-2028 to 01-Mar-2028

Suite with panorama window	£7155 GBP pp
Veranda Suite Cat. 4-5	£8459 GBP pp
Veranda Suite Cat. 6-7	£10979 GBP pp
SPA Suite	£11849 GBP pp
Penthouse Deluxe Suite	£18899 GBP pp
Penthouse Grand Suite	£29965 GBP pp