



WILDERNESS FROM GREENLAND TO THE EAST COAST OF CANADA

From the southern coast of Greenland to the frozen expanses of Nunavut, via the wild fjords of Labrador, Newfoundland and the mysterious islands of Saint Pierre and Miquelon, nature showcases its majesty. Bathed in soft light, the Greenland fjords reveal glaciers and icebergs, while Nunavut's unique natural environment welcomes polar bears in profound silence. On Akpatok Island, limestone cliffs and guillemots whisper timeless stories. Further south, the mountains of Labrador and the lagoons of the Atlantic islands invite contemplation and tranquillity amidst ever-changing light and an endless horizon. Some departures may have slightly modified itineraries. Please confirm the itinerary with an Expedition Specialist.



ITINERARY

Day 1 Kangerlussuaq

From 1941 to 1992, the town of Kangerlussuaq in Greenland was home to an American military base. Nowadays, thanks to its international airport, it has become a transit point for travellers seeking adventure in the Far North. Located to the north of the Arctic Circle, this town is the starting point of magnificent discoveries surrounded by unspoiled nature. Indeed, just a few dozen kilometres from there it is possible to get close to the Greenland ice sheet, the largest body of ice in the Northern Hemisphere. From Kangerlussuaq, admire also the superb landscapes of tundra in autumnal colours, where Arctic hares, musk oxen, Arctic foxes, reindeer, falcons and eagles live.



The Small Cruise Ship Collection

www.small-cruise-ships.com

small-cruise-ships.com

info@small-cruise-ships.com

Day 2 Nuuk

When Erik Le Rouge, the exiled Norse chief, landed on the coast of Nuuk, he found a fertile and welcoming land dotted with fjords. He settled there with a group of his former countrymen, and the Norse remained the principal inhabitants until, over a period of 500 years, their population declined and gave way to the Inuit. Nuuk is situated at the mouth of one of the largest networks of fjords in the world, where the waters never freeze. The town spreads gently out towards the Davis Strait and enjoys an historic center that is particularly rich in national heritage. The vivid reds, blues, greens and yellows of the houses are a lively contrast to the somber waters of Greenland and serve to lift the spirits of the locals during the Winter months.

Day 3 At Sea

During your journey at sea, make the most of the many services and activities on board. Treat yourself to a moment of relaxation in the spa or stay in shape in the fitness centre. Depending on the season, let yourself be tempted by the swimming pool or a spot of sunbathing. This journey without a port of call will also be an opportunity to enjoy the conferences or shows proposed on board, depending on the activities offered, or to do some shopping in the boutique or to meet the PONANT photographers in their dedicated space. As for lovers of the open sea, they will be able to visit the ship's upper deck to admire the spectacle of the waves and perhaps be lucky enough to observe marine species. A truly enchanted interlude, combining comfort, rest and entertainment.

Day 4 Iqaluit, Nunavut

Known as Frobisher Bay in the past, before being named Iqaluit in 1987, the capital of Nunavut is the smallest Canadian capital, with 7,000 inhabitants. It is a gateway to the secret,

mysterious and wild Arctic, expressing this world of silence, a majestic territory. Strongly rooted in its unique Inuit culture, it holds memories of a millennia-old presence of pre-Dorset, Dorset and Thule cultures. Discoveries indicate that it was a fishing and camping site, called qaluit ("place of fish") at the time. You'll appreciate its large ice-covered and isolated spaces steeped in Inuit culture and imbued with a unique "Far North" atmosphere.

Day 5 Grinnell Glacier, Nunavut

To the south of Baffin Island, at the entrance to the fjord leading to Iqaluit, the capital of Nunavut, lies the Grinnell Glacier. Iqaluit's name is derived from the Inuktitut language; it means "place of many fish", as the waters of the fjord are teeming with Arctic char. The glacier, which is approximately 800 metres (2,625 feet) high, is named after Henry Grinnell, an American philanthropist who funded several polar expeditions in the 19th century. Weather permitting, you will have the privilege of admiring the glacier front from the sea during an outing in an inflatable dinghy, before landing to walk up the valley running along the glacier, in a rocky landscape with tundra vegetation.

Day 6 Akpatok Island, Nunavut

In the north-west of Ungava Bay, in Nunavut, the northernmost Canadian province, Akpatok Island reveals its chiselled coastline. Uninhabited by men, it is occupied by the thick-billed murre for which it was named (Akpat is their name in Inuit). Its cliffs, rising up to 200 metres (656 feet) high, make an ideal nesting environment for these birds. Dominated by a vast limestone plateau, the island is also surrounded by numerous beaches where walrus sun themselves in the summertime. From your inflatable dinghy, if the weather conditions allow it, you might also have the chance to glimpse some polar bears

The Small Cruise Ship Collection
www.small-cruise-ships.com

01432 507 280 (within UK)

info@small-cruise-ships.com | small-cruise-ships.com



The Small Cruise Ship Collection

www.small-cruise-ships.com

small-cruise-ships.com

info@small-cruise-ships.com

roaming along the cliffs in search of food.

Day 7 Nachvak Fjord, Torngat Mountains National Park

Nachvak Fjord is one of the longest fjords on the north coast of Labrador, stretching out over 20 km (12.4 miles). Steep-sided, it is 2 km (1.2 miles) wide and lined with sheer rock faces. On its western end, its two arms, Tallek and Tasiuyak, form the outlet of glacial valleys with a characteristic U shape. The Torngat Mountains, the highest points of the surrounding relief, are Labrador's tallest. Nachvak Fjord has always been an important fishing spot for the Inuit of Labrador, and was once the northernmost trading post of the Hudson's Bay Company. You will be able to admire spectacular views from the ship's exterior decks, before taking your place aboard an inflatable dinghy to get as close as possible to the coast.

Day 8 Nain

Nain is the northernmost permanent settlement in Newfoundland and Labrador, accessible only by air or by sea. The town was established by Moravian missionaries in 1771 and has been inhabited ever since. It now has a population of around 850, composed mainly of Inuits. Fishing is the main income-generating activity, with hunting and traditional trapping activities resuming in the winter months. Accompanied by your naturalist guides and local guides, you will have the chance to discover daily life in Nain, then set off on a hike in the surrounding hills. There, you will discover a beautiful view of the small wooded valley in which the village lies.

Day 9 Rigolet

Discover the picturesque community of Rigolet, on the north coast of Labrador. The wooden promenade, looking out onto the spruce forest and the waters of Hamilton Inlet, is one of the

longest in the world. The village, located very near to Lake Melville, houses a community of 300 inhabitants who are, in the main part, descendants of the Labrador Inuit and the European traders who came to settle in these parts from the 18th century onwards. During your port of call, you'll admire the beautiful pieces of local craftsmanship: weaved baskets, mats, sealskin clothing, sculptures... As for wildlife fans, they will not be disappointed, with the possibility of observing whales, as well as seals, orcas, bears, foxes, otters and migratory birds.

Day 10 Battle Harbour

Lying some 15 kilometres (9 miles) off the wind-battered coast of Labrador, the small and isolated Battle Harbour cultivates the traditions of a community of Newfoundland fishermen. Once home to a saltfish mercantile complex established around 1770, the island offers visitors a carefully maintained heritage in a stunning setting of rocky coves and emerald moors... The small, colourful wooden houses, the shops and fish warehouses, all vestiges reflecting the rich local history, have earned the island its designation as a National Historic Site of Canada. Your team of naturalists will guide you along the island's paths, for an immersion into the past of the tough fishermen who settled here.

Day 11 L'Anse aux Meadows, Newfoundland

Located at the Northern extremity of the island of Newfoundland, L'Anse aux Meadows is listed as a UNESCO World Heritage Site and is the only site known to have been established by the Vikings in North America. Its ancient vestiges provide the very first traces of European presence in the new world. The remains found on this splendid 11th century Scandinavian archaeological site are identical to those found in Iceland. Aboard your ship, cruise in the wake of those first

The Small Cruise Ship Collection
www.small-cruise-ships.com

01432 507 280 (within UK)

info@small-cruise-ships.com | small-cruise-ships.com



The Small Cruise Ship Collection

www.small-cruise-ships.com

small-cruise-ships.com

info@small-cruise-ships.com

Vikings who discovered the tip of North America 500 years before Christopher Columbus arrived on the shores of the American continent. A memorable adventure in a setting punctuated with coastal peat bogs, grass and many varieties of shrubs and lichen.

Day 12 Twillingate, Newfoundland

In the azure setting of the Newfoundland coast, Twillingate stands like a rare jewel, with its jagged cliffs embracing the ocean. This picturesque haven, inhabited for over 3,000 years, was once the fiefdom of intrepid fishermen. The municipality now proudly shelters its secular lighthouse, an immutable sentinel facing the Atlantic. In this area, as soon as you arrive on the island, you will make the most of six walking trails in the heart of the famous Rockcut Twillingate Trails, from where you will be able to admire the striking views of local birdlife, unique geological formations and, if you are lucky, majestic northern moose. These itineraries wind their way through wild and preserved nature, providing a complete immersion in a coastal ecosystem featuring rare beauty. For those wishing to enjoy a more contemplative experience, the local museum, the historic lighthouse and the church make for very rich cultural alternatives, enabling visitors to explore the secrets of Twillingate fascinating maritime heritage, which is remarkably concentrated.

Day 13 Bonavista, Newfoundland & Trinity Bay, Newfoundland

Bonavista is a charming and picturesque fishing village nestled along the eastern flank of the island of Newfoundland and it will surprise you with its authentic and preserved character. Fall in love with these mysterious and untamed lands, where the ocean clashes vigorously against the protruding and sheer cliffs and the wind ripples the high wild grass covering the moor. In the

nearby Dungeon Provincial Park, you will be able to explore this unique nature while observing the ballet of the many seabirds that have taken up residence on these coastlines.

In the northern confines of Newfoundland, Trinity Bay unfolds like an aquatic jewel set in the granitic case of the Atlantic coast. Its deep azure waters creep into the crevices of the coastline, creating a maze of fjords and inlets that provide refuge for myriad marine species. The jagged cliffs that overlook it, age-old remnants of glacial erosion, offer a splendid spectacle for the contemplative gaze. This maritime enclave, the cradle of abundant biodiversity, remains an eloquent witness to the untamed magnificence of boreal nature.

Day 14 St. John's, Newfoundland

You will be charmed by the small multi-coloured wooden houses hanging to the side of cliffs at the entrance to the bay or edging the small steep streets of the capital of the Canadian province of Newfoundland and Labrador. Their green, blue, red and yellow colours are reminiscent of fishing boats. This quiet little port at the end of the world, the easternmost in North America, became the first English colony founded on American territory in 1497. Protected by the Gulf Stream, the climate here is relatively mild and the natural landscapes are spectacular. You'll be able to enjoy magnificent panoramas from Signal Hill. It was at the summit of this hill that Guglielmo Marconi received the first transatlantic wireless signal in 1901.

Day 15 Saint Pierre Island, Saint Pierre and Miquelon

Off the Canadian coast, discover Saint Pierre Island, one of the two main islands of the Saint Pierre and Miquelon archipelago, the only French territory in North America. Endowed with a natural harbour, the island, whose name is a reference to the



The Small Cruise Ship Collection

www.small-cruise-ships.com

small-cruise-ships.com

info@small-cruise-ships.com

patron saint of fishermen, developed around the fishing industry and still has many traces of its past today. Whale hunting, cod fishing, alcohol smuggling during the Prohibition: all of these memories are still very much alive in the capital, Saint-Pierre. The island is also renowned for the observation of exceptional fauna including, among others, whales, fin whales, dolphins, seals, puffins and petrels.

Day 16 Miquelon Island, Saint Pierre and Miquelon

At the entrance of the Gulf of Saint Lawrence, not far from the Grand Banks of Newfoundland, Miquelon is one of the two main islands of the Saint Pierre and Miquelon archipelago and will delight those with a love of wide open space. Connected by a sand isthmus, with Miquelon in the north and Langlade to the south, this wild land is famous as the home to France's only boreal forest and has sublime scenery of hills, dotted with ponds, woods and bogs, and ringed by lagoons and steep cliffs. The rich and varied wildlife will guarantee fine encounters, whether inland, which is populated with white-tailed deer and bald eagles, or on the coast, refuge to many seabirds and common seals.

Day 17 At Sea

During your journey at sea, make the most of the many services and activities on board. Treat yourself to a moment of relaxation in the spa or stay in shape in the fitness centre. Depending on the season, let yourself be tempted by the swimming pool or a spot of sunbathing. This journey without a port of call will also be an opportunity to enjoy the conferences or shows proposed on board, depending on the activities offered, or to do some shopping in the boutique or to meet the PONANT photographers in their dedicated space. As for lovers of the open sea, they will be able to visit the ship's upper deck to admire the spectacle of

the waves and perhaps be lucky enough to observe marine species. A truly enchanted interlude, combining comfort, rest and entertainment.

Day 18 Halifax

A historical port city on the Canadian east coast, Halifax, surrounded by enchanting nature, stands out as the provincial capital and the cultural hub of Nova Scotia. The city played an important strategic military role in the two world wars and was also the largest Royal Navy base during the American Revolutionary War and the Napoleonic Wars. Most of the victims of the Titanic disaster were laid to rest here in the Fairview cemetery, which you will have the chance to discover. At this port of call, you will also have the opportunity to visit the picturesque fishing village of Peggy's Cove and discover its breathtaking natural landscapes.

Please note:

Itineraries are subject to change.

The Small Cruise Ship Collection
www.small-cruise-ships.com

01432 507 280 (within UK)

info@small-cruise-ships.com | small-cruise-ships.com



The Small Cruise Ship Collection

www.small-cruise-ships.com

small-cruise-ships.com

info@small-cruise-ships.com

YOUR SHIP: L'AUSTRAL

YOUR SHIP: L'Austral

VESSEL TYPE:

142 metres. Passenger Capacity:
264 (200 in Antarctica). Built:

LENGTH: 2011

PASSENGER CAPACITY:

BUILT/REFURBISHED:

Luxury Expedition / Cruise Ship This superb mega-yacht with 132 cabins is the result of the expertise of the Italian Fincantieri shipyard and French sophistication, as interpreted by designer Jean-Philippe Nuel. L'Austral has a unique atmosphere, a subtle blend of luxury, intimacy and well-being. A sleek silhouette softened by elegantly smooth contours and large, arched windows opening up to the sea and the light: so many features come together to give L'Austral her distinctive shape. Precious materials, discreet elegance and a perfect balance between chic and casual, combine to make you feel as if you are on your own private yacht. A design blending tradition and innovation, where a nautical mood has been subtly recreated. Precious materials in smoothing neutral tones are brought to life with splashes of cheerful reds. So many personal touches create the spirit of a "private yacht". Suites and staterooms You can expect magnificent ocean views as 124 staterooms and suites have balconies. Individually-controlled airconditioning · Cabin layout: kingsize bed, or twin beds, communicating cabins available (children welcome) · Minibar · Flat screen satellite TV · iPod™

players · Desk with stationery · Electronic safe · French bath products · Dressing table and hairdryer · Bath robes · Satellite direct line telephone · 110/220 volts · 24hr room service · WiFi · Balcony Cuisine Loyal to the great French tradition, the haute cuisine on board is worthy of the finest restaurants, where discreet, attentive service is the hallmark. Choose from two restaurants for breakfasts, lunch and dinner. The Gastronomic Restaurant is situated on Le Liberte Deck and serves you French and international cuisine accompanied by fine wine. On the Grill Restaurant, you have the opportunity to eat outside and enjoy buffet lunch and themed dinner. Life On Board Whether you want to join other guests in the theatre or games area (Wii™ consoles, etc), or relax on your own in a quiet corner of the library, L'Austral has been designed to meet the needs of every guest. Everything has been done to preserve the independence of each guest to suit their personal tastes: lounges for lectures and shows, a spa in partnership with Sothys™, but also more intimate spaces such as the library and internet corner. Comfortable cabins, nearly all with private balcony, are available for families either as triples or as communicating cabins. There is also a games area with Wii™ consoles, children's menus, and a baby-sitting service. Just as if you were on a private yacht, your time is your own to do as you please. Fitted with the latest equipment (Kinesis Wall, running machine) and in partnership with the famous Sothys™ brand, the Beauty Centre on L'Austral welcomes you for some unforgettable moments of relaxation and pampering (beauty treatments, hairdresser). Wheelchairs 3 specially adapted wheelchair cabins (Deck 3 = Superior cabin no. 307, no balcony, Deck 4 = Prestige Cabin no. 407 - with

The Small Cruise Ship Collection
www.small-cruise-ships.com

01432 507 280 (within UK)

info@small-cruise-ships.com | small-cruise-ships.com



The Small Cruise Ship Collection

www.small-cruise-ships.com



small-cruise-ships.com

info@small-cruise-ships.com

balcony and Deck 5 = Prestige Cabin no 509, with balcony) and lifts to all decks/areas. Details Please click the following links to read more about Ponant and the other Ponant



cruise ships.



The Small Cruise Ship Collection

www.small-cruise-ships.com

01432 507 280 (within UK)

info@small-cruise-ships.com | small-cruise-ships.com

The Small Cruise Ship Collection

www.small-cruise-ships.com

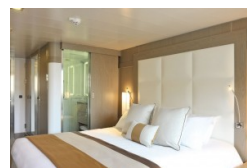
small-cruise-ships.com

info@small-cruise-ships.com

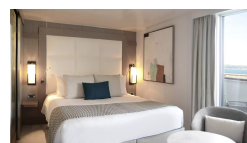
INSIDE YOUR SHIP



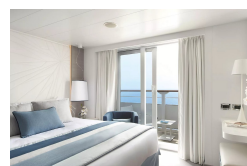
Deluxe Stateroom



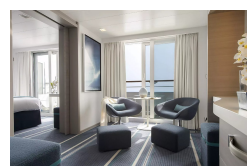
Deluxe Suite



Grand Deluxe Suite



Grand Privilege Suite



Owner's Suite

Prestige Deck 4

Prestige Deck 5

Prestige Deck 5 Suite

Prestige Deck 6

Prestige Deck 6 Suite

Privilege Suite

Superior Stateroom



The Small Cruise Ship Collection

www.small-cruise-ships.com



small-cruise-ships.com

info@small-cruise-ships.com

PRICING

19-Sep-2026 to 06-Oct-2026

Prestige Deck 6 Suite	£27530 GBP pp
Deluxe Stateroom	£11910 GBP pp
Deluxe Suite	£19654 GBP pp
Superior Stateroom	£11074 GBP pp
Prestige Deck 6	£14414 GBP pp
Prestige Deck 5	£13700 GBP pp
Prestige Deck 5 Suite	£26214 GBP pp
Prestige Deck 4	£13104 GBP pp

Prestige Deck 6	£13840 GBP pp
Superior Stateroom	£10660 GBP pp
Prestige Deck 5 Suite	£25075 GBP pp
Prestige Deck 5	£13160 GBP pp
Prestige Deck 6 Suite	£26325 GBP pp
Deluxe Suite	£18835 GBP pp
Deluxe Stateroom	£11455 GBP pp
Prestige Deck 4	£12590 GBP pp

09-Sep-2027 to 23-Sep-2027

Prestige Deck 6	£12295 GBP pp
Owner's Suite	£45275 GBP pp
Superior Stateroom	£9675 GBP pp
Prestige Deck 5 Suite	£21545 GBP pp
Prestige Deck 5	£11735 GBP pp
Prestige Deck 4	£11265 GBP pp
Grand Deluxe Suite	£25665 GBP pp
Deluxe Suite	£16405 GBP pp
Deluxe Stateroom	£10335 GBP pp
Grand Privilege Suite	£30055 GBP pp
Privilège Suite	£22575 GBP pp

16-Sep-2027 to 03-Oct-2027



The Small Cruise Ship Collection

www.small-cruise-ships.com

01432 507 280 (within UK)

info@small-cruise-ships.com | small-cruise-ships.com