



WILD WONDERS: CRUISE FROM PERU TO PANAMA

Embark on a captivating journey with the "Wild Wonders: cruise from Peru to Panama," an exhilarating luxury cruise that begins in Callao (Lima), Peru, and culminates in Panama City. Over ten days, this expedition takes you along South America's diverse Pacific coast, venturing through multiple countries from Peru's arid coastline to the lush tropics of Panama. This voyage offers the opportunity to explore remarkable locations. In Peru, discover Lima's rich colonial heritage and Isla Guanape's thriving wildlife. Continue to Salaverry, uncovering Peru's ancient pre-Incan past. Marvel at Ecuador's picturesque Isla de la Plata, rich with unique flora and fauna. Arriving in Colombia, you'll explore the verdant terrains of Utria National Park and the untamed Darien Jungle, before reaching the vibrant cities of Panama. Throughout this adventure, engage in a spectrum of activities designed to enrich your experience. Unwind at sea with expert-led lectures, captivating photography lessons, and luxurious spa treatments. Delight in guided tours of historical sites, ecological excursions in natural reserves, and cultural encounters with indigenous groups. This unforgettable journey marries discovery and relaxation along South America's breathtaking Pacific shoreline.



ITINERARY

Days 0 - 1 Pre Cruise & Callao (Lima)

Lima, Peru's capital, sits between the Pacific Ocean and Andes Mountains with the seaport of Callao. The bustling city's renowned culinary scene features a local favourite, ceviche. The UNESCO World Heritage historic centre features colonial-era architecture including Plaza Mayor and San Francisco



Monastery. Nearby, the clay ruins of ceremonial pyramids, Huaca Pucllana and Huaca Huallamarca, offer a glimpse of the Inca civilization's history.

Day 2 Isla Guanape

A breeding ground for seabirds and sea lions, Isla Guanape lies a few miles off the Peruvian coast. Consisting of four separate islands, the area was exploited for guano (for fertiliser). The islands are now protected, and the harvesting of guano is strictly regulated. A few building relics remain scattered around from the guano-mining days. Wildlife, including pelicans, boobies, Humboldt penguins and South American sea lions, live along the coastline.

Day 3 Salaverry

The port of Salaverry is the gateway to Peru's pre-Incan past, with the best of Peru's rich archaeological heritage. Surrounding well-preserved ruins include incredible relics of the 1st- to 8th-century Moche, like the mud pyramids of Huaca del Sol and Huaca de la Luna. Ancient Chan Chan, once housing 60,000 under the Chimu Empire, was the largest pre-Columbian city in the Americas. Nearby Trujillo features the 16th-century Plaza de Armas.

Day 4 Day at sea

Sea days are rarely dull. Take the time to sit back and let the world go by. The ship's observation decks provide stunning views of the passing ocean. A day at sea gives you the opportunity to mingle with other passengers and share your experiences of this incredible trip or head to our library which is stocked full of reference books. Get an expert's view in one of our on-board lectures or perhaps perfect your photography skills with invaluable advice from our onboard professional photographers.

Day 5 Isla de la Plata

Also known as the Silver Island, Isla de la Plata, though rumoured to hold Sir Francis Drake's buried treasure, has never yielded any such riches. Nevertheless, it is rich in biodiversity, comparable to the Galapagos Islands, with a similar dry, tropical environment. The island hosts a diverse array of wildlife, including over 32 bird species like blue-footed boobies, waved albatrosses, pelicans, gannets and frigate birds.

Day 6 Manta

Day 7 Day at sea

Today as you sail, you'll bask in the endless comforts of your ship. From the deck, marvel at the dramatic sea views. Relax with a nurturing facial treatment or massage in the spa or delve



into the ship's learning resources. Or, simply take refuge in your cabin and enjoy the opportunity to rest.

Day 8 Utria National Park, Ensenada de Utria

One of the worlds' wettest regions, with around 10,000 mm of rainfall per year, Utria National Park's forested area has rich and diverse fauna and flora with seven different mangrove species along its shore. The national park also overlaps the territory of the Embera indigenous people and fishing villages of Afro-Colombian people spread along the coastline. Both communities are strong conservationists and provide the local ecotourism services.

Day 9 Darien Jungle

The authentic Embera tribe live in the Darien Jungle, and rarely receive outside visitors. They rely on the jungle, using its plants for food, medicine and clothing. This is a unique opportunity to meet the indigenous people and discover their local customs. This visit offers an immersive look at an ancient culture still thriving in the Panamanian wilderness.

Day 10 Fuerte Amador (Panama City)

Fuerte Amador, the Panama Canal's Pacific terminus, lies at the end of a mile-long manmade causeway, built from the canal's

waste materials. Nearby, Frank Gehry's colourful Biomuseo showcases Panama's biodiversity. Miraflores Locks' visitor centre tells the story of this legendary waterway. A short taxi ride away, modern Panama City has evolved around its two historic centres: the conquistador-era Panama Viejo and 17th-century Casco Viejo.

Please note:

Itineraries are subject to change.



The Small Cruise
Ship Collection

www.small-cruise-ships.com

small-cruise-ships.com

info@small-cruise-ships.com

YOUR SHIP: VEGA

YOUR SHIP: Vega

VESSEL TYPE:

LENGTH:

PASSENGER CAPACITY:

BUILT/REFURBISHED:

Launched in 2022, this state of the art ship has been designed to journey to off the beaten path destinations and remote polar regions in style and comfort. The ship incorporates a PC5 ice-strengthened hull combined with extra-large stabilisers to make your journey as smooth as possible. Sophisticated Elegance. We know how important outdoor space is, so our spacious, relaxing public spaces provide wide open, unobstructed views throughout the ship. The destination will always be in view. Your Wellbeing. The safety & happiness of our guests is paramount to our 120-strong crew on board as well as our passionate expedition team who'll be serving up thrilling shore excursions and lasting memories. Cabin Types. Our 76 cabins including 6 suites have all the amenities you will need to feel comfortable including dressing gowns, hairdryers, personal safes and minibars. Our stylish cabins all have desks, a dressing area and comfy seating. En suite bathrooms all feature glass-enclosed rain showers. Wheelchair access Guests who use wheelchairs must bring their own, as we have only a small number of wheelchairs stored onboard for emergencies. To ensure ease of movement on the ship, wheelchairs and mobility aids must be no wider than 65cm. All mobility or medical

equipment brought on board must be capable of being carried safely and must be declared before sailing. To ensure that all guests can safely evacuate during an emergency, guests requiring a wheelchair can only be accommodated in our ADA-accessible cabins. We offer an Oceanview stateroom on Vega which is specifically designed to be completely ADA compliant and have a fully operable wheelchair-access wet unit. Vega has two lifts, serving every passenger deck apart from the Stargazing top deck, which is, therefore, more difficult to access, as are the Aft Marina and Swan's Nest forward observation platform. Also, we don't have special equipment to access the swimming pool, jacuzzi, or sauna. Otherwise, the ship is entirely at your disposal. Many of the expeditions ashore in remote places are by Zodiac. Boarding these boats and returning aboard can present challenges for wheelchair users, as can navigating uneven terrain. These challenges are by no means always insurmountable, though, and our highly experienced crew is trained to provide reliable advice and assistance. They will make every effort to ensure wheelchair-using guests enjoy a memorable experience at each destination. Our general guidance, however, is to recommend wheelchair users travel with a companion for their ease and enjoyment. If you prefer to remain aboard, our panoramic interiors and ample open decks ensure an immersive, intimate experience of your inspiring



www.small-cruise-ships.com

01432 507 280 (within UK)

info@small-cruise-ships.com | small-cruise-ships.com



The Small Cruise Ship Collection

www.small-cruise-ships.com



small-cruise-ships.com

info@small-cruise-ships.com



surroundings.



The Small Cruise
Ship Collection

www.small-cruise-ships.com

01432 507 280 (within UK)

info@small-cruise-ships.com | small-cruise-ships.com



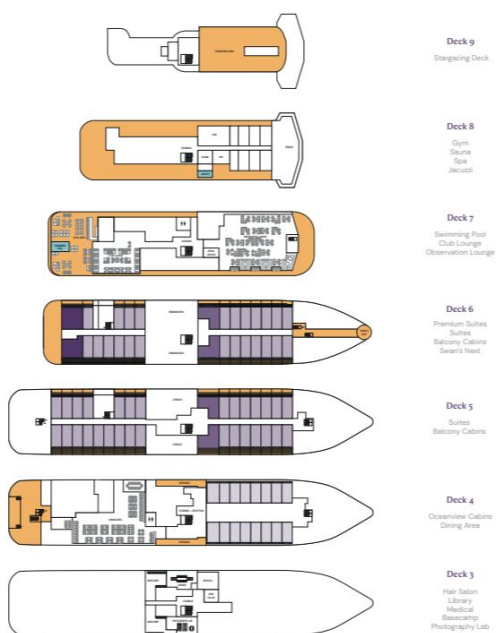
The Small Cruise Ship Collection

www.small-cruise-ships.com

small-cruise-ships.com

info@small-cruise-ships.com

INSIDE YOUR SHIP



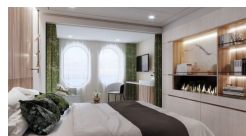
Balcony D5



Balcony M5



Oceanview D4



Oceanview M4



Premium Suite



Suite



The Small Cruise Ship Collection

www.small-cruise-ships.com

01432 507 280 (within UK)

info@small-cruise-ships.com | small-cruise-ships.com



The Small Cruise
Ship Collection

www.small-cruise-ships.com

small-cruise-ships.com

info@small-cruise-ships.com

PRICING

07-Apr-2026 to 17-Apr-2026

Balcony M5	£9119 GBP pp
Oceanview M4	£7645 GBP pp
Balcony D5	£8765 GBP pp
Premium Suite	£14579 GBP pp
Suite	£12745 GBP pp
Oceanview D4	£7285 GBP pp



The Small Cruise
Ship Collection

www.small-cruise-ships.com

01432 507 280 (within UK)

info@small-cruise-ships.com | small-cruise-ships.com