

The Small Cruise Ship Collection

www.small-cruise-ships.com

small-cruise-ships.com

info@small-cruise-ships.com

WILD LANDS OF INDONESIA - LUXURY SMALL SHIP CRUISE

Embark on an exclusive journey through Indonesia's wild and pristine realms, where untouched nature and timeless traditions unfold along the seas of Savu and Flores. Sumba, Komodo, Saleh Bay, Satonda ... On this voyage, the natural world regains its sovereignty, revealing hidden, immaculate treasures: remote islands with crystal-clear waters, lush tropical forests, turquoise lagoons, tranquil bays framed by volcanic peaks, secret lakes, immaculate white-sand beaches, and a vibrant marine world. These secluded shores also preserve a living ancestral culture, which you will discover in charming villages and discreet, authentic towns. A timeless adventure, experienced to the rhythm of the elements and local heritage.



ITINERARY

Day 1 - Benoa, Bali

If it's a taste of exotic authenticity you're after, prepare to be spell-bound by the **island of Bali**, tucked away in the heart of the Indonesian **archipelago**. The beauty and diversity of its landscapes, the depth and richness of its cultural heritage and the plethora of activities on offer here make **Bali** a little slice of heaven on Earth. The island's southern coast enthralls with its white sand beaches, its picturesque little fishing villages such as **Benoa**, and its hills patchworked with terraced rice paddies further inland. Nicknamed 'the Island of Gods' for its sumptuous temples, Bali is the beating heart of Indonesian Hinduism.

The Small Cruise Ship Collection
www.small-cruise-ships.com

01432 507 280 (within UK)

info@small-cruise-ships.com | small-cruise-ships.com



The Small Cruise Ship Collection

www.small-cruise-ships.com

small-cruise-ships.com

info@small-cruise-ships.com

Day 2 - Benoa, Bali

If it's a taste of exotic authenticity you're after, prepare to be spell-bound by the **island of Bali**, tucked away in the heart of the Indonesian **archipelago**. The beauty and diversity of its landscapes, the depth and richness of its cultural heritage and the plethora of activities on offer here make **Bali** a little slice of heaven on Earth. The island's southern coast enthralls with its white sand beaches, its picturesque little fishing villages such as **Benoa**, and its hills patchworked with terraced rice paddies further inland. Nicknamed 'the Island of Gods' for its sumptuous temples, Bali is the beating heart of Indonesian Hinduism.

Day 3 - Waikelo, Sumba

Bordered by the Savu Sea, the northern coast of **Sumba Island** offers a **preserved and authentic face of Indonesia**. Its rocky shoreline, dotted with fishing villages, unfolds into clear-water coves and secluded bays, fringed by lush mangroves and wild beaches where time seems to stand still.

Day 4 - At sea

During your journey at sea, make the most of the many services and activities on board. Treat yourself to a moment of relaxation in the spa or stay in shape in the fitness centre. Depending on the season, let yourself be tempted by the swimming pool or a spot of sunbathing. This journey without a port of call will also be an opportunity to enjoy the conferences or shows proposed on board, depending on the activities offered, or to do some shopping in the boutique or to meet the PONANT photographers in their dedicated space. As for lovers of the open sea, they will be able to visit the ship's upper deck to admire the spectacle of the waves and perhaps be lucky enough to observe marine

species. A truly enchanted interlude, combining comfort, rest and entertainment.

Day 5 - Dili

Located on the northern coast of the island of Timor, along the narrow plains between the central mountains and the Ombai Strait, the seaside resort of **Dili** is the capital of East Timor, a former Portuguese colony that has been independent since May 2002. The uniqueness of this territory, still preserved from the tourist routes, is unveiled thanks to the beauty of its intact landscapes, with dense tropical forest covering undulating hills, coral reef and immaculate sandy beaches. You will be enchanted by this small and peaceful town with a distinctive Portuguese atmosphere, and will discover the riches of its historic and cultural heritage during your visit.

Day 6 - Maumere, Flores

Floresians have an **ancient culture** stretching back millennia before the first arrival of Europeans in search of trade opportunities. Their history is shared through oral traditions and is recreated in song and dance. The mountainous terrain of Flores has preserved the diversity of cultures and **Maumere** serves as the capital of the Sikka district and main trading port. Few tourists make it to Maumere with most stopping at Labuan Bajo and heading west to the islands of Komodo. Consequently, Maumere has kept its **charming atmosphere**, an eclectic mix of a bustling trading town and a coastal paradise. Join your expedition team and local guides for a tour by local transport to the markets and tribal villages in the hinterland of Maumere.

Day 7 - 17 Islands Marine Park, Flores

The Small Cruise Ship Collection
www.small-cruise-ships.com

01432 507 280 (within UK)

info@small-cruise-ships.com | small-cruise-ships.com



The Small Cruise Ship Collection

www.small-cruise-ships.com

small-cruise-ships.com

info@small-cruise-ships.com

Off the northern coast of Flores Island, **the 17 Islands National Park** comprises a handful of islets with crystal-clear waters, home to paradisiacal beaches and abundant biodiversity. Among them, **Tiga Island** stands out with its **dazzling white-sand beaches** and pristine waters, perfect for swimming. A small corner of preserved nature where the horizon blends with the turquoise sea, inviting relaxation and contemplation.

Day 8 - Komodo National Park

Between the islands of Sumbawa and Flores, **Komodo National Park** welcomes you to discover its natural wonders. At the very heart of the Indonesian archipelago, the three islands that form it - Komodo, Rinca and Padar - owe their renown to the **famous eponymous dragons**, enormous lizards over two metres long, which live in its grassy savannah. This jagged and hilly volcanic territory belonging to the Sunda Islands is a **UNESCO World Heritage Site** because of its incredible terrestrial and marine biodiversity. Admire its palette of colours, intermingling the sparkling whites of the beaches, the deep blues of the coral-filled water and the soft greens of its pastures.

Day 9 - Satonda Island

A little-known gem north of Sumbawa, **the volcanic island of Satonda** offers wild and spectacular landscapes. At its heart lies a **mysterious saltwater lake**, surrounded by cliffs and lush vegetation, resembling a secret mirror. After a short walk from the landing point along a marked path, you will have the opportunity to reach this fascinating natural basin **to enjoy a refreshing swim or a snorkeling hike**.

Day 9 - Badas, Sumbawa

The port of Badas is part of the greater township of Sumbawa Besar, on the island of Sumbawa. Like most of Sumbawa the people hold their culture strong as a major part of their identity. The island has a strong influence from the Makassarese of Sulawesi, who over the centuries have introduced a lot of their culture into Sumbawa. Join your expedition team and local guides for a tour by bus to Pamulung Village where you will be welcomed by the head of the village and have the opportunity to witness first-hand the local traditions of rice pounding, weaving and also witness a wedding procession. Your visit will conclude with an exciting Sumbawa buffalo race, an event that will be held in honour of our visit.

Day 10 - Saleh bay, Sumbawa

North of Sumbawa Island, **Saleh Bay** - one of the largest bays in Indonesia - stretches out like an untouched refuge, where volcanic landscapes meet the open sea. Its calm waters, particularly rich in plankton, make it **one of the world's prime sites for whale shark sightings**, the largest fish on Earth. In the heart of this natural sanctuary, carried by the silence of the water, you may have the opportunity to observe and **share an exceptional moment with this protected species**.

Day 11 - Benoa, Bali

If it's a taste of exotic authenticity you're after, prepare to be spell-bound by the **island of Bali**, tucked away in the heart of the Indonesian **archipelago**. The beauty and diversity of its landscapes, the depth and richness of its cultural heritage and the plethora of activities on offer here make **Bali** a little slice of heaven on Earth. The island's southern coast enthralls with its white sand beaches, its picturesque little fishing villages such as **Benoa**, and its hills patchworked with terraced rice paddies further inland. Nicknamed 'the Island of

The Small Cruise Ship Collection
www.small-cruise-ships.com

01432 507 280 (within UK)

info@small-cruise-ships.com | small-cruise-ships.com



Gods' for its sumptuous temples, Bali is the beating heart of Indonesian Hinduism.

Please Note:

Itineraries are subject to change.

The Small Cruise Ship Collection

www.small-cruise-ships.com

small-cruise-ships.com

info@small-cruise-ships.com

YOUR SHIP: LE SOLEAL

YOUR SHIP: Le Soleal

VESSEL TYPE:

LENGTH:

PASSENGER CAPACITY:

BUILT/REFURBISHED:

Luxury Small Ship A sleek silhouette, a welcoming intimate atmosphere, and the same philosophy that has made her sister ships, L'Austral, Lyrial and Le Boreal, such a success. This magnificent yacht of only 132 staterooms and suites, all with balconies, has contemporary decor inspired by the luxury yachting world, with fluid lines and a modern colour scheme combining natural wood with shades of grey and white. White Corian counters in the lobby contrast with the warmth of leather to recall a boat's hull, while the central sculpture of enamelled pieces takes its inspiration from the sea. In the lounge bar, the carpet picks up a tennis stripe theme symbolising a certain idea of cruising, one synonymous with French elegance and a chic seaside spirit. Wheelchairs 3 specially adapted wheelchair cabins (Deck 3 = Superior cabin no. 307, no balcony, Deck 4 = Prestige Cabin no. 407 - with balcony and Deck 5 = Prestige Cabin no 509, with balcony) and lifts to all decks/areas. Read about our recent Ponant cruise to Antarctica Please click the following links to read more about Ponant and the other Ponant cruise ships.



The Small Cruise Ship Collection

www.small-cruise-ships.com

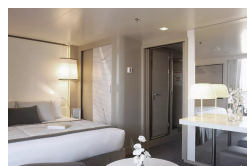
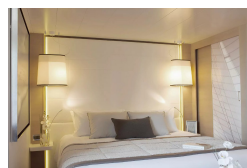
small-cruise-ships.com

info@small-cruise-ships.com

INSIDE YOUR SHIP



Deluxe Stateroom

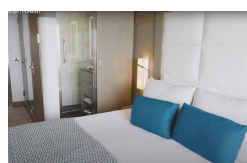


Deluxe Suite

Owner's Suite



Prestige Stateroom Deck 4



Prestige Stateroom Deck 5

Prestige Stateroom Deck 6

Prestige Suite Deck 5

Prestige Suite Deck 6



The Small Cruise Ship Collection

www.small-cruise-ships.com

small-cruise-ships.com

info@small-cruise-ships.com

PRICING

24-Nov-2026 to 04-Dec-2026

Owner's Suite	£18555 GBP pp
Prestige Stateroom Deck 6	£5775 GBP pp
Prestige Stateroom Deck 5	£5465 GBP pp
Superior Stateroom	£4335 GBP pp
Prestige Stateroom Deck 4	£5205 GBP pp
Deluxe Suite	£8025 GBP pp
Deluxe Stateroom	£4695 GBP pp
Prestige Suite Deck 6	£11405 GBP pp
Prestige Suite Deck 5	£10845 GBP pp