



WILD GREENLAND ESCAPE

Venture to the fjord-laced coast of western Greenland, where Inuit communities perched at the edge of the Greenland ice cap carry on their timeless way of life. Explore archaeological sites and modern-day villages, and glide into breathtaking fjords by Zodiac or kayak as we explore this rugged coastline. Cruise amid the massive icebergs of the Ilulissat Icefjord and meet local people who live off the land and sea in the tradition of their ancestors.



ITINERARY

DAY 1 Boston, Massachusetts, U.S. / Kangerlussuaq, Greenland / Embark Ship

Fly from Boston by chartered aircraft to Kangerlussuaq on Greenland's western coast. Settle into your cabin aboard National Geographic Resolution, one of our purpose-built polar expedition ships. Meals Included: Lunch, Dinner

DAY 2 Greenland's West Coast and Sisimiut

Cruise the length of Kangerlussuaq Fjord en route to Sisimiut. Dozens of deep fjords carve into Greenland's west coast, many with glaciers fed by the ice cap that covers 80 percent of the country. At Sisimiut, a former whaling port, visit the open-air museum and wander amid 18th-century wooden buildings. After



a guided walk of the sights and sounds of Sisimuit, take advantage of your free time by visiting Dog Town or the local artisan workshops. Meals Included: Breakfast, Lunch, Dinner

DAY 3 Ilulissat and Disko Bay

Sail into Disko Bay and set out to explore a tongue of the Greenland ice cap. Enjoy an extraordinary cruise aboard local boats among towering icebergs of the UNESCO World Heritage-designated Ilulissat Icefjord. Visit the town of Ilulissat and hike to an archaeological site in the Sermermiut Valley. As we make our way north through Disko Bay, if ice conditions permit, we follow the inside passage of Disko Island and trace the shores of the Nuussuaq Peninsula. Meals Included: Breakfast, Lunch, Dinner

DAY 4 Uummannaq and Qilakitsoq

The village of Uummannaq sits on a tiny island in the Uummannaq Fjord that is dominated by a massive peak rising dramatically at its center. Visit the town's excellent community museum to see traditional clothing and tools along with scenes of everyday life on these islands. Cross the fjord to the site of Qilakitsoq, an important archaeological site for Greenlanders, where eight mummies, dating back to 1475, were discovered in 1972. These eight individuals, all extraordinarily well-preserved women and children, were Thule people, the ancestors of the modern Inuit. Learn about the historic find, which was featured on the cover of the February 1985 issue of National Geographic magazine. Meals Included: Breakfast, Lunch, Dinner

DAY 5 Exploring Greenland's Fjords

Enjoy an expeditionary day exploring Greenland's fjords, covered in spongy tundra, and look for Arctic foxes and, with luck, caribou. Paddle a kayak along the steep sides of the fjord or

ride a Zodiac to see the glacially carved landscape up close. Meals Included: Breakfast, Lunch, Dinner

DAY 6 Kangerlussuaq / Disembark Ship / Boston / Fly Home

Our ship returns to Kangerlussuaq by morning. Disembark and transfer to the airport for your charter flight back to Boston to connect with your flight home. Meals Included: Breakfast, Lunch

Please Note:

Itineraries are subject to change.



YOUR SHIP: NATIONAL GEOGRAPHIC EXPLORER

YOUR SHIP:	National Geographic Explorer
VESSEL TYPE:	Luxury Expedition
LENGTH:	108 meters
PASSENGER CAPACITY:	148 (single & twin cabins)
BUILT/REFURBISHED:	1982 / 2008

National Geographic Explorer is a state-of-the-art expedition ship. It is a fully stabilized, ice-class vessel, enabling it to navigate polar passages while providing exceptional comfort. It carries kayaks and a fleet of Zodiac landing craft. An Undersea Specialist operates a remotely operated vehicle (ROV) and sophisticated video equipment, extending access to the underwater world. Public areas : Bistro Bar; Chart Room; Restaurant; Global Gallery; Library, Lounge with full service bar and state-of-the-art facilities for films, slideshows and presentations; Mud Room with lockers for expedition gear, and Observation Lounge. Our "Open Bridge" provides guests an opportunity to meet our Officers and Captain and learn about navigation. Meals : Served in single seatings with unassigned tables for an informal atmosphere and easy mingling. Menu is international with local flair. Cabins : All cabins face outside with windows or portholes, private facilities and climate controls. Expedition Equipment : Zodiac landing craft, kayaks, Remotely Operated Vehicle (ROV), hydrophone, SplashCam, underwater video camera, Crow's Nest remote controlled camera, video microscope, snorkeling gear. Special Features : A full-time doctor, Undersea Specialist, LEX Photo Specialist and Video

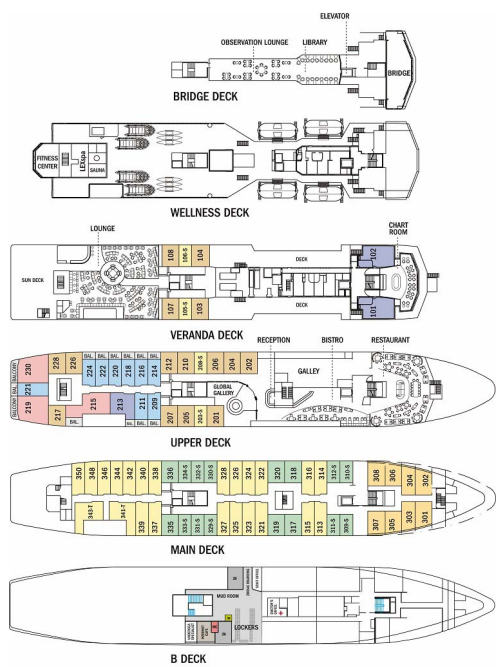
Chronicler, Internet Cafe and laundry. Wellness : The vessel is staffed by two Wellness Specialists and features a glass enclosed Fitness Center, outdoor stretching area, two LEXspa treatment rooms



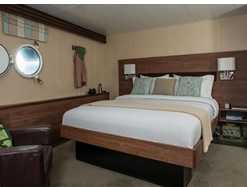
and Sauna.



INSIDE YOUR SHIP



Category 1



Category 2



Category 3



Category 4



Category 5

Category 6

Category 7

Category SA (solo)



The Small Cruise
Ship Collection

www.small-cruise-ships.com

small-cruise-ships.com

info@small-cruise-ships.com

PRICING

04-Aug-2025 to 10-Aug-2025

Category 6	£9114 GBP pp
Category 7	£10526 GBP pp
Category 4	£7053 GBP pp
Category SB (solo)	£7691 GBP pp
Category 1	£5085 GBP pp
Category 5	£7640 GBP pp
Category 3	£6207 GBP pp
Category 2	£5962 GBP pp
Category SA (solo)	£7375 GBP pp

10-Aug-2025 to 16-Aug-2025

Category SA (solo)	£7375 GBP pp
Category 3	£6207 GBP pp
Category 4	£7053 GBP pp
Category 2	£5962 GBP pp
Category 6	£9114 GBP pp
Category SB (solo)	£7691 GBP pp
Category 7	£10526 GBP pp
Category 5	£7640 GBP pp
Category 1	£5085 GBP pp



The Small Cruise
Ship Collection

www.small-cruise-ships.com

01432 507 280 (within UK)

info@small-cruise-ships.com | small-cruise-ships.com