

The Small Cruise Ship Collection

www.small-cruise-ships.com

small-cruise-ships.com

info@small-cruise-ships.com

WEDDELL SEA QUEST ABOARD USHUAIA

Expedition cruise to the Antarctic Peninsula, the South Shetland Islands & the Weddell Sea. Aboard the USHUAIA



ITINERARY

Day 1: Depart from Ushuaia

Embark the USHUAIA in the afternoon and meet your expedition and lecture staff. After you have settled into your cabins we sail along the famous Beagle Channel and the scenic Mackinlay Pass.

Day 2 & 3: Crossing the Drake Passage

Named after the renowned explorer, Sir Francis Drake, who sailed these waters in 1578, the Drake Passage also marks the

The Small Cruise Ship Collection
www.small-cruise-ships.com

01432 507 280 (within UK)

info@small-cruise-ships.com | small-cruise-ships.com



The Small Cruise Ship Collection

www.small-cruise-ships.com

small-cruise-ships.com

info@small-cruise-ships.com

Antarctic Convergence, a biological barrier where cold polar water sinks beneath the warmer northern waters. This creates a great upwelling of nutrients, which sustains the biodiversity of this region. The Drake Passage also marks the northern limit of many Antarctic seabirds. As we sail across the passage, Antarpoly Expeditions' lecturers will be out with you on deck to help with the identification of an amazing variety of seabirds, including many albatrosses, which follow in our wake. The USHUAIA's open bridge policy allows you to join our officers on the bridge and learn about navigation, watch for whales, and enjoy the view. A full program of lectures will be offered as well. The first sightings of icebergs and snow-capped mountains indicate that we have reached the South Shetland Islands, a group of twenty islands and islets first sighted in February 1819 by Capt. William Smith of the brig Williams. With favorable conditions in the Drake Passage our lecturers and naturalists will accompany you ashore as you experience your first encounter with the penguins and seals on Day 3.

[Days 4 to 6: Exploring the Weddell Sea](#)

This is where huge tabular icebergs roam. In some years, the Erebus & Terror Gulf and Weddell Sea are chock-a-block full with ice, making for exciting ice navigation. Get up early and go out on deck. It may be 3:30h in the morning, but the sunrises will be unlike anything you've ever seen. Huge tabular bergs break from the Larsen, Ronne, and Filchner ice shelves and combine with one-year-old and multi-year sea ice to produce a floating, undulating panorama of rugged ice scenery. All-white Snow Petrels are likely to be coursing over the floes, often joined by Pintado Petrels. The usual passage to the east side of the Antarctic Peninsula traverses the Antarctic Sound, which is 30 miles (48 km) long and 7-12 miles (11-19 km) wide and runs

northwest-to-southeast. Hope Bay and the Argentine Station Esperanza, are located on the western side of the Sound. Brown Bluff, a promontory on the Tabarin Peninsula, is located south of Hope Bay. Both of them might be possible landing sites. The Weddell Sea represents the center of the Peninsula's Adélie Penguin population. Devil Island, Paulet Island and the already mentioned sites, might give us ample proof of this. The numbers of penguins are breathtaking. Sometimes juvenile Emperor Penguins have been sighted, riding ice floes but are by no means regular in the area. This region also teems with vibrant exploration history. The most bizarre of these tales involves the Swedish Antarctic Expedition of 1901-03 under the command of geologist Otto Nordenskjöld. Four visitor sites have links to this expedition: Hope Bay, Paulet Island, Snow Hill Island, and Cape Well-Met on Vega Island. Our expedition staff will be pleased to share their exciting story with you. Nordenskjöld's expedition was the first to overwinter in the Peninsula. His ship the Antarctic, under the command of the famous Norwegian whaling captain Carl Anton Larsen, was trapped in the ice and sank, but the men survived on different locations and even managed to carry out significant scientific research in the area.

[Days 7 & 8: Exploring the Antarctic Peninsula and the South Shetland Islands](#)

The Antarctic Peninsula's remarkable history will also provide you with a type of excitement often only associated with the early explorers. You will have plenty of time to explore its amazing scenery, a pristine wilderness of snow, ice, mountains and waterways and a wide variety of wildlife. Apart from Gentoo and Chinstrap Penguins and other seabirds you are likely to encounter Weddell, crabeater and leopard seals as well as Minke whales and orcas at close range. We hope to navigate some of the most beautiful waterways: the Gerlache Strait,

The Small Cruise Ship Collection
www.small-cruise-ships.com

01432 507 280 (within UK)

info@small-cruise-ships.com | small-cruise-ships.com



The Small Cruise Ship Collection

www.small-cruise-ships.com

small-cruise-ships.com

info@small-cruise-ships.com

Errera Channel and Neumayer Channel. Possible landing sites may include: Paradise Bay, which is perhaps the most aptly named place in the world with its impressive glacial fronts and mountains, Cuverville Island, home of the biggest Gentoo Penguin colony in the Peninsula surrounded by glaciers and castellated icebergs, and the British Museum and Post office at Port Lockroy. Further exploration will lead us to the South Shetland Islands. The volcanic island group is a haven for wildlife. Vast penguin rookeries and seals hauling out on the shorelines make every day spent here unforgettable. We plan to sail through the narrow passage into the flooded caldera of Deception Island - the largest of three recent volcanic centers in the South Shetlands- which is truly amazing. Once inside, the rising slope of the black, cinder-covered volcanic rim can be walked uphill to a rather spectacular vantage point. We also aim to visit the crescent-shaped island Half Moon, home to Chinstrap Penguins in breathtaking surroundings, in the entrance of Moon Bay between Greenwich and Livingston Islands.

Days 9 & 10: At Sea. Crossing the Drake Passage, northbound

We leave Antarctica and head north across the Drake Passage. Join our lecturers and naturalists on deck as we search for seabirds and whales and enjoy some final lectures. Take the chance to relax and reflect on the fascinating adventures of the past days on the way back to Ushuaia.

Day 11: Arrival in Ushuaia

We arrive at the port of Ushuaia in the early morning and disembark the USHUAIA after breakfast.

Please Note:

The above itinerary is a guide only. Our exact route and program will vary to take best advantage of local weather and ice conditions and opportunities to view wildlife. Changes will be made by the Captain and/or Expedition Leader to facilitate the best results from the prevailing conditions and they will try their best to reach the Weddell Sea. However if ice conditions do not allow access the route might be changed to West Antarctica. A daily program sheet will be issued on board. Flexibility is the key to success.

 The Small Cruise
Ship Collection

www.small-cruise-ships.com

01432 507 280 (within UK)

info@small-cruise-ships.com | small-cruise-ships.com

The Small Cruise Ship Collection

www.small-cruise-ships.com

small-cruise-ships.com

info@small-cruise-ships.com

YOUR SHIP: USHUAIA

YOUR SHIP: Ushuaia

VESSEL TYPE:

LENGTH:

PASSENGER CAPACITY:

BUILT/REFURBISHED:

Originally built for the United States agency NOAA (National Oceanic & Atmospheric Administration), the MV USHUAIA has been refurbished to accommodate a maximum of 84 passengers in 41 comfortable twin cabins and suites. The ice-strengthened polar vessel MV USHUAIA is very well appointed and provides ample deck space and an open bridge policy. The full complement of inflatable landing craft ensures superb landings and wildlife viewing opportunities on the otherwise inaccessible coastline. All cabins include ample storage space. Public areas feature a large dining room (one sitting), an observation lounge and bar, a conference room with modern multimedia equipment, a well-stocked library, a changing room and a small infirmary. Our expert captain, officers and crew are highly experienced in Antarctic navigation and have a great love of nature. We provide a specialist team of international expedition leaders and lecturers, all extremely knowledgeable, enthusiastic, helpful and dedicated to the protection of the environment. Our chefs prepare excellent cuisine including many local specialties and the bar is well-stocked with carefully selected wines and spirits.



The Small Cruise Ship Collection
www.small-cruise-ships.com

01432 507 280 (within UK)

info@small-cruise-ships.com | small-cruise-ships.com

The Small Cruise Ship Collection

www.small-cruise-ships.com

small-cruise-ships.com

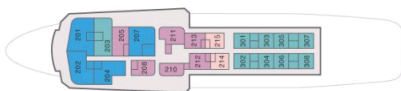
info@small-cruise-ships.com

INSIDE YOUR SHIP

Bridge Deck H

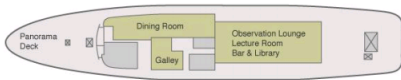


Upper Deck G



- 4 Suites
- 6 Premier twin private cabins
- 2 Premier single private cabins
- 9 Superior twin private cabins

Main Deck F



Deck E

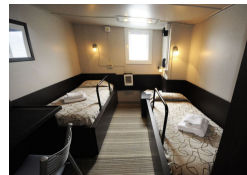


- 10 Standard twin semi-private cabins
- 11 Standard Plus twin private cabins
- 2 Standard Plus triple private cabins
- Changing room

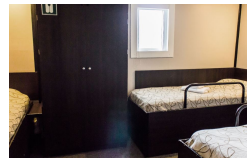
Premier Single



Premier Twin

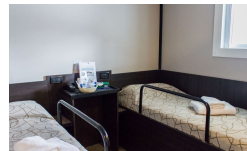


Standard Plus Triple



Standard Plus Twin

Standard Twin



Suite Twin



The Small Cruise Ship Collection

www.small-cruise-ships.com



small-cruise-ships.com

info@small-cruise-ships.com

PRICING

17-Feb-2027 to 28-Feb-2027

Suite Twin	£12669 GBP pp
Premier Single	£12905 GBP pp
Premier Twin	£10775 GBP pp
Standard Plus Twin	£9235 GBP pp
Standard Twin	£7905 GBP pp
Standard Plus Triple	£7235 GBP pp
Superior Twin	£11855 GBP pp