

The Small Cruise Ship Collection

www.small-cruise-ships.com

small-cruise-ships.com

info@small-cruise-ships.com

WANDERING THE MEDITERRANEAN - LUXURY SMALL SHIP CRUISE

Popular holiday spots, historic cities and turquoise sea: this itinerary reveals the full splendour of the Mediterranean. Between the gentle way of life and timeless elegance, the Greek shores invite you to slow down and wander, in Hydra, the pearl of the Saronic Islands and devoid of cars, or in Galaxidi, a charming and lively fishing port, very close to old Delphi. In Sicily and Corsica, citadels and medieval cities turn into opulent seaside resorts over the summer, in the heart of breathtaking panoramas. On the Tyrrhenian coast, the citrus-coloured narrow streets of Porto Santo Stefano and the perched castle of Gaeta will invite you to experience the *“Dolce Vita”* to the full.



ITINERARY

Day 1 - Athens

The Greek capital city is located on the edge of the Saronic gulf, in the east of the country. It bears a plural name in reference to the first villages that surround the Acropolis. You will be enchanted by the rocky plateau presided by its monuments listed as UNESCO World Heritage. In the city below, you can visit some of the liveliest districts in Athens: Plaka, with its maze of colourful streets, and where, in the evenings the drifting aroma of moussaka and garlic prawns will tickle your taste buds. The National Archaeological museum and the Cycladic Art Museum are also some of the city's key attractions and allow visitors to discover Athens' cultural past.

The Small Cruise Ship Collection
www.small-cruise-ships.com

01432 507 280 (within UK)

info@small-cruise-ships.com | small-cruise-ships.com



The Small Cruise Ship Collection

www.small-cruise-ships.com

small-cruise-ships.com

info@small-cruise-ships.com

Day 2 - Hydra

This unusual gem belonging to the Saronic islands is located to the east of the Peloponnese. There are no cars here. Named after the island, the harbour town is layered up the slopes of a mountainous bay. You may be surprised to see beautiful **stone mansions.** These are traditional here, as are the multi-coloured caiques along the quays. Further along the shore, you will discover the Historical Archives Museum. Collections from Athens National History Museum are exhibited in the elegant **villa Koundouriotis.**

Day 3 - Crossing the Corinth Canal

The Corinth Canal cuts through the Isthmus of Corinth, turning the Peloponnese into an island as it separates the region from the Greek mainland. Inaugurated in 1893, the canal is a little over six kilometres long and enables merchant vessels and passenger to avoid a long 400-km detour around the peninsula. The two sides of the canal reach a height of approximately fifty metres. From the exterior decks, don't miss this unique opportunity to watch the ship as it navigates along the narrow strip of water encased between tall, ochre cliffs. What an experience!

Day 3 - Galaxidi

Encircled by captivating arid mountains and a sea front of unrivalled beauty, picturesque Galaxidi stands proudly in the Gulf of Corinth, on the shores of Krisaikos Bay. You will fall in love with the authentic character of this preserved and majestic town, with its paved little streets edged with former neo-classical residences, remnants of the naval era, and sumptuous religious buildings. Like one of the town's symbols: the church of Agios Nikolaos (Saint Nicholas). The building with Byzantine architecture dominates the town, and boasts two bell towers

and a monumental dome.

Day 4 - At sea

During your journey at sea, make the most of the many services and activities on board. Treat yourself to a moment of relaxation in the spa or stay in shape in the fitness centre. Depending on the season, let yourself be tempted by the swimming pool or a spot of sunbathing. This journey without a port of call will also be an opportunity to enjoy the conferences or shows proposed on board, depending on the activities offered, or to do some shopping in the boutique or to meet the PONANT photographers in their dedicated space. As for lovers of the open sea, they will be able to visit the ship's upper deck to admire the spectacle of the waves and perhaps be lucky enough to observe marine species. A truly enchanted interlude, combining comfort, rest and entertainment.

Day 5 - Taormina, Sicily

Located on Sicily's eastern coast, in the province of Messina, the seaside town of Taormina is Sicily's Saint-Tropez, boasting heritage sites, secluded beaches and luxury shopping. You can visit its medieval centre, suspended 300 metres above sea level, where terraces offer a spectacular view of the Mediterranean Sea. Another vestige from its past are the ruins of the **Greco-Roman theatre.** This extremely well-preserved site attracts visitors who are fascinated by the natural beauty of the area which overlooks a **turquoise bay.**

Day 6 - Gaeta

Gaeta takes its name from the legend of the nanny of Aeneas. This illustrious relationship can be seen in the nobility of this old town, built on a peninsula, at the end of a headland. In Roman times, Gaeta was already a renowned seaside

The Small Cruise Ship Collection
www.small-cruise-ships.com

01432 507 280 (within UK)

info@small-cruise-ships.com | small-cruise-ships.com



The Small Cruise Ship Collection

www.small-cruise-ships.com

small-cruise-ships.com

info@small-cruise-ships.com

destination; it fell under Byzantine domination then became an autonomous duchy and an independent republic. The fortifications that surround this ancient fort remind us of this rich history, as does **the cathedral** bell tower, an elegant building of both Roman and Moor influence, decorated with ceramic in the style of bell-towers of Amalfi.

Day 7 - Porto Santo Stefano

In Southern Tuscany, **Porto Santo Stefano**, a charming seaside resort located on the Monte Argentario peninsula, is renowned for its enchanting setting. Nestling on the side of a hill, the small town offers beautiful sandy beaches with crystal-clear water and a picturesque town centre. Stroll around its steep alleyways lined with coloured houses and discover **La Rocca**, a Spanish fortress built in the 17th century to protect the town against pirate attacks. There, you can enjoy a stunning view over the port and the **Gulf of Talamone**.

Day 8 - Calvi, Corsica

Nestled on a rocky spur in the north-west of Corsica, the port of **Calvi** offers its whiteness between two sapphire-coloured bays. Capital of the **Balagne** region, the Genoese city benefits from an exceptional natural setting between the abrupt relief of the central chain, fertile hills and long sandy beaches. From the promontory of the **Notre-Dame-de-la-Serra chapel**, built in the 19th century on the ruins of a 15th century sanctuary, you will not miss the sublime panorama of the seaside, the mountains and the Calvi citadel. A little further west, you will have the opportunity to discover with the **peninsula of Revelatta**, a wilder and more preserved part of Corsica.

Day 9 - Nice

Capital of the Cote d 'Azur, Nice is surrounded by an amphitheatre of hills and mountains that protects it from the wind. You will probably want to explore the Promenade des Anglais, where you can sit on one of the famous blue chairs laid out opposite the baie des Anges. The Chateau hill is also a very pleasant place to walk. This is the entrance to the **old city**, with its bustling markets and regional products along the main street, the Cours Saleya.

Please note:

Itineraries are subject to change.

The Small Cruise Ship Collection

www.small-cruise-ships.com

01432 507 280 (within UK)

info@small-cruise-ships.com | small-cruise-ships.com



The Small Cruise Ship Collection

www.small-cruise-ships.com

small-cruise-ships.com

info@small-cruise-ships.com

YOUR SHIP: LE BOUGAINVILLE

YOUR SHIP: Le Bougainville

VESSEL TYPE:

LENGTH:

PASSENGER CAPACITY:

BUILT/REFURBISHED:

Featuring innovative and environmentally-friendly equipment, elegantly designed cabins, spacious suites with large windows, and lounge areas that open onto the outside, this new limited-capacity yacht boasting just 92 cabins and suites will offer you a truly unique cruising experience. As the first ship in a new series that remains true to the Ponant spirit, Le Bougainville will embody the unique atmosphere that is the cruise line's hallmark: a subtle blend of refinement, intimacy and comfort. Aboard this ship that flies the French flag, you will experience the incomparable pleasure of an intimate cruise, with the possibility of exploring an ever-increasing range of destinations in an ethnic-chic ambiance with luxury service. Experience a luxurious setting where the accent is on authenticity and passion for travel. **RESTAURANTS** As it is an essential part of French culture, gastronomy will naturally have pride of place aboard this new ship. Through its two restaurants, Le Bougainville will invite you on a journey to elegance and epicureanism. In a relaxed atmosphere, a first dining area located on Deck 3 and able to seat 70 will serve grilled meats daily, along with a variety of salads and desserts. To the back of Deck 4, you will find a 260 m² panoramic restaurant which can accommodate all of

our passengers in a single sitting. Designed differently to that on our other ships, this dining area, which opens onto the outside, will have a buffet of salads, desserts and cheeses at your disposal. Our discreet and attentive crew will provide table service for hot meals. **PUBLIC AREAS** Like Le Boreal and its sisterships, Le Bougainville has many common areas that are designed and equipped to meet all of your needs while preserving the intimacy of each passenger. A 140 m² reception area includes: A reception/concierge desk, An excursions desk, The ship's administrative services, The sales office, manned by our Guest Relations Officer, Our 50 m² boutique which sells clothing, jewellery, beauty products, postcards and various accessories, Toilets accessible to passengers with reduced mobility. A new hydraulic platform with adjustable height provides: Easier boarding than on any other cruise ship, Easier Zodiac embarkation and disembarkation for expeditions, Easier access to the sea for swimming and practising various water sports such as kayaking or paddle-boarding. A pool deck offering: A pool with a panoramic view, equipped with a counter-current swimming system, A pleasant solarium, An outdoor bar and lounge with armchairs and sofas. A 200 m² main lounge which can accommodate all of our passengers to share convivial moments and to host activities organised during the day or evening. Lastly, a theatre that seats 188, equipped with: The latest sound and lighting technology, A LED wall as the stage backdrop, for the projection of high-resolution images and videos. Please click the following links to read more about Ponant and the other Ponant

The Small Cruise Ship Collection

www.small-cruise-ships.com

01432 507 280 (within UK)

info@small-cruise-ships.com | small-cruise-ships.com



The Small Cruise Ship Collection

www.small-cruise-ships.com

small-cruise-ships.com

info@small-cruise-ships.com



cruise ships.

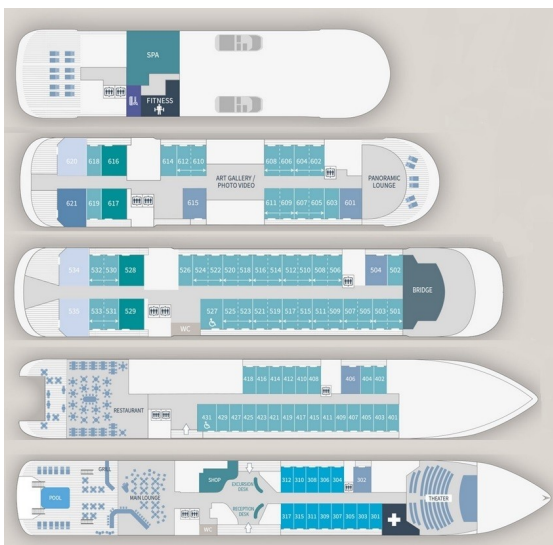
The Small Cruise Ship Collection

www.small-cruise-ships.com

small-cruise-ships.com

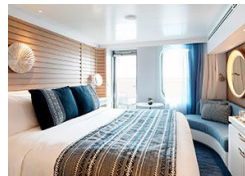
info@small-cruise-ships.com

INSIDE YOUR SHIP

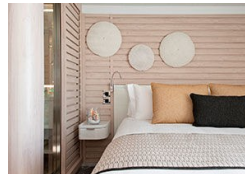


- Owner's Suite Deck 6
- Privilege Suites Deck 5-6
- Grand Deluxe Suites Deck 5-6
- Prestige Suites Deck 5-6
- Deluxe Suites Deck 5-6
- Prestige Cabins Deck 4-5-6
- Deluxe Cabins Deck 3

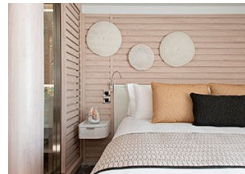
Deluxe Stateroom



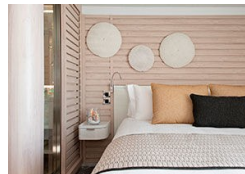
Deluxe Suite Deck 3



Deluxe Suite Deck 4



Deluxe Suite Deck 5



Deluxe Suite Deck 6

Grand Deluxe Suite

Owner's Suite

Prestige Stateroom Deck 4

Prestige Stateroom Deck 5

Prestige Stateroom Deck 6

Prestige Suite Deck 5

Prestige Suite Deck 6

Privilege Suite Deck 5

Privilege Suite Deck 6



The Small Cruise Ship Collection

www.small-cruise-ships.com

small-cruise-ships.com

info@small-cruise-ships.com

PRICING

31-Jul-2027 to 08-Aug-2027

| | |
|---------------------------|---------------|
| Grand Deluxe Suite | £10705 GBP pp |
| Deluxe Suite Deck 3 | £7435 GBP pp |
| Prestige Suite Deck 5 | £8255 GBP pp |
| Owner's Suite | £15165 GBP pp |
| Prestige Stateroom Deck 6 | £4615 GBP pp |
| Prestige Suite Deck 6 | £8455 GBP pp |
| Prestige Stateroom Deck 5 | £4365 GBP pp |
| Prestige Stateroom Deck 4 | £4155 GBP pp |
| Deluxe Suite Deck 6 | £7435 GBP pp |
| Privilege Suite Deck 5 | £8865 GBP pp |
| Deluxe Stateroom | £3955 GBP pp |
| Deluxe Suite Deck 4 | £7435 GBP pp |
| Privilege Suite Deck 6 | £8865 GBP pp |
| Deluxe Suite Deck 5 | £7435 GBP pp |