



The Small Cruise  
Ship Collection

[www.small-cruise-ships.com](http://www.small-cruise-ships.com)

[small-cruise-ships.com](http://small-cruise-ships.com)

[info@small-cruise-ships.com](mailto:info@small-cruise-ships.com)

## VOYAGE TO INDONESIA: DRAGONS, REEFS, AND THE SPICE ISLANDS — WITH SMITHSONIAN JOURNEYS

In alliance with Smithsonian Journeys. \_This cruise is part of a collection of PONANT voyages that are specially-tailored for English-speaking travelers who want to engage with the world. In addition to the usual elements of the PONANT experience, the listed price for these voyages includes transfers to and from the ship, talks and discussions aboard ship by world class experts, and a shore excursion or activity in each port of call that encourages guests to embrace the sights, sounds, tastes, and smells of the local environment and culture.\_ On this 13-day voyage from Bali through the myriad islands of eastern Indonesia to the northern shores of Australia you will sail through the heart of the Coral Triangle, where beaches, mangroves, and rainforests host an amazing biodiversity , and where the surrounding seas comprise the richest coral reef system in the world. You will also encounter a rich human history as you discover the colonial legacy of European powers who fought one another for control of the trade in valuable spices, and as you visit with villagers whose way of life continues age-old traditions. Leaving Bali, the aptly-named "Island of Gods," your first port of call, on the island of Sumbawa, is also your first encounter with a traditional village, where you will be welcomed by the residents and introduced to some of their customs. This glimpse of ancient and enduring ritual is followed by two days exploring the abundant wildlife of Komodo National Park , a UNESCO World Heritage Site, home to an incredible diversity of species, including the eponymous Komodo dragons , giant monitor lizards that grow to more than ten feet long. On the islands of Flores and Alor , you will experience some of the best snorkeling and diving opportunities of the voyage, as well

The Small Cruise  
Ship Collection

[www.small-cruise-ships.com](http://www.small-cruise-ships.com)

01432 507 280 (within UK)

[info@small-cruise-ships.com](mailto:info@small-cruise-ships.com) | [small-cruise-ships.com](http://small-cruise-ships.com)



## The Small Cruise Ship Collection

[www.small-cruise-ships.com](http://www.small-cruise-ships.com)

[small-cruise-ships.com](http://small-cruise-ships.com)

[info@small-cruise-ships.com](mailto:info@small-cruise-ships.com)

as an opportunity to delve into the customs and traditions of the indigenous Takpala people. And in the Barat Daya Islands you will find more of the same, as well as amazing birdlife, including 162 different species, a number of which are endemic. A full day in Band Neira in the Maluku Islands (spice islands) introduces you to the history of these small volcanic outcroppings that were fought over by virtually every colonial power interested in the South Pacific and the trade in cloves, nutmeg, and mace. As you walk the streets of the town, you will discover an eclectic mix of Portuguese, Dutch, and British architecture --the remnants of a long and tumultuous history. Kitikiti Waterfall and Triton Bay, both on the coast of West Papua, provide two days of unparalleled diving, snorkeling, swimming, and Zodiac cruising in the "epicenter of the Coral Triangle." And your last call, before a day at sea brings you to Darwin, Australia, and the end of the voyage, will be in the Kei Islands, located in the heart of the Malukus, home to some of Indonesia's most beautiful white

sandy beaches.

### ITINERARY

#### Day 1 - Benoa, Bali

If it's a taste of exotic authenticity you're after, prepare to be spell-bound by the island of Bali, tucked away in the heart of the Indonesian archipelago. The beauty and diversity of its landscapes, the depth and richness of its cultural heritage and the plethora of activities on offer here make Bali a little slice of heaven on Earth. The island's southern coast enthralls with its white sand beaches, its picturesque little fishing villages such as Benoa, and its hills patchworked with terraced rice paddies further inland. Nicknamed 'the Island of Gods' for its sumptuous

temples, Bali is the beating heart of Indonesian Hinduism.

#### Day 2 - Badas, Sumbawa

The port of Badas is part of the greater township of Sumbawa Besar, on the island of Sumbawa. Like most of Sumbawa the people hold their culture strong as a major part of their identity. The island has a strong influence from the Makassarese of Sulawesi, who over the centuries have introduced a lot of their culture into Sumbawa. Join your expedition team and local guides for a tour by bus to Pamulung Village where you will be welcomed by the head of the village and have the opportunity to witness first-hand the local traditions of rice pounding, weaving and also witness a wedding procession. Your visit will conclude with an exciting Sumbawa buffalo race, an event that will be held in honour of our visit.

#### Days 3 - 4 - Komodo National Park

Between the islands of Sumbawa and Flores, Komodo National Park welcomes you to discover its natural wonders. At the very heart of the Indonesian archipelago, the three islands that form it - Komodo, Rinca and Padar - owe their renown to the famous eponymous dragons, enormous lizards over two metres long, which live in its grassy savannah. This jagged and hilly volcanic territory belonging to the Sunda Islands is a UNESCO World Heritage Site because of its incredible terrestrial and marine biodiversity. Admire its palette of colours, intermingling the sparkling whites of the beaches, the deep blues of the coral-filled water and the soft greens of its pastures.

The Small Cruise Ship Collection

[www.small-cruise-ships.com](http://www.small-cruise-ships.com)

01432 507 280 (within UK)

[info@small-cruise-ships.com](mailto:info@small-cruise-ships.com) | [small-cruise-ships.com](http://small-cruise-ships.com)



## The Small Cruise Ship Collection

[www.small-cruise-ships.com](http://www.small-cruise-ships.com)

[small-cruise-ships.com](http://small-cruise-ships.com)

[info@small-cruise-ships.com](mailto:info@small-cruise-ships.com)

### Day 5 - Maumere, Flores

Floresians have an ancient culture stretching back millennia before the first arrival of Europeans in search of trade opportunities. Their history is shared through oral traditions and is recreated in song and dance. The mountainous terrain of Flores has preserved the diversity of cultures and Maumere serves as the capital of the Sikka district and main trading port. Few tourists make it to Maumere with most stopping at Labuan Bajo and heading west to the islands of Komodo. Consequently, Maumere has kept its charming atmosphere, an eclectic mix of a bustling trading town and a coastal paradise. Join your expedition team and local guides for a tour by local transport to the markets and tribal villages in the hinterland of Maumere.

### Day 6 - Kalabahi, Alor

The unique culture of the Alorese continues among the Takpala indigenous group who have preserved their traditional architecture and ceremonies. The island of Alor is also known as the island of a Thousand Moko's. The Moko is a small bronze kettledrum which is believed to have originated from the Dong Son culture of Vietnam. However, it remains a mystery as to how these prehistoric Dong Son drums arrived in Alor. Local legend says that the Moko's were discovered buried in the ground, and indeed mokos are still being uncovered today. Join the expedition team and local guides for a tour by local transport to Takpala village, the Museum of a Thousand Mokos and the thriving main market of Kalabahi.

### Day 7 - Barat Daya Islands

If you are looking for exoticism and authenticity, then you will be captivated by the Barat Daya Islands, an Indonesian archipelago lying to the east of the Lesser Sunda Islands, bathed by the Banda Sea and surrounded by coral reefs. With their fine sandy beaches, marine environments, preserved nature and paddy fields, these islands in the Maluku archipelago are a real concentration of the beauty South-East Asia has to offer. A lush environment in which fauna and flora flourish. Notably, there are almost 162 different bird species including four endemic ones and three endangered ones.

### Day 8 - Banda Neira, Maluku Islands

From age-old traditional cultures and ancient vestiges, to coral reefs and lush green jungle... The attractions of the remote Banda archipelago seem endless. Better known as the legendary "Spice Islands" of the Ancient World, these small volcanic landmasses were the fabled prize of colonial powers for more than four centuries. Every colonial power of significance fought for control of these ten small islands that today have become largely forgotten. Walking the streets of Banda Neira is a surreal experience as your eyes are drawn to the eclectic mix of Portuguese, Dutch and British architecture, the remnants of a rich and tumultuous history. It is without doubt the most historically significant and interesting of all the "Spice Islands".

The Small Cruise Ship Collection

[www.small-cruise-ships.com](http://www.small-cruise-ships.com)

01432 507 280 (within UK)

[info@small-cruise-ships.com](mailto:info@small-cruise-ships.com) | [small-cruise-ships.com](http://small-cruise-ships.com)



## The Small Cruise Ship Collection

[www.small-cruise-ships.com](http://www.small-cruise-ships.com)

[small-cruise-ships.com](http://small-cruise-ships.com)

[info@small-cruise-ships.com](mailto:info@small-cruise-ships.com)

### Day 9 - Kitikiti Waterfall, Mommon

North of Triton Bay, in the Indonesian province of West Papua, lie the Bomberai Peninsula and Sebakor Bay. A real paradise for divers, this protected, authentic and very wild area boasts an exceptional biodiversity. Here, you will be able to admire the superb Kitikiti Waterfall where you could enjoy a swim or snorkel surrounded by lush nature, both on land and under water.

### Day 10 - Triton Bay, West Papua

Triton Bay is one of three regions in Indonesia's West Papua province that comprise the Bird's Head Seascape (the other two are Raja Ampat and Cenderawasih Bay), which is now considered by marine biologists to be the epicentre of the Coral Triangle. It contains more fish and coral species than anywhere else on the planet. Its unparalleled marine biodiversity and endemism, habitat richness, and relatively intact nature of its ecosystems are unique. Join your expedition team for a zodiac voyage through the spectacular rainforest capped karst islands. Later in the day enjoy the opportunity to explore the richness of the underwater realm.

### Day 11 - Kei Islands, Maluku Islands

The Kei Islands are blessed with kilometres of stunning, yet almost entirely empty, white-sand beaches and a deeply hospitable population. Beneath the mostly Christian facade, Kei culture is fascinatingly distinctive. Local history holds that ancestors of contemporary Kei islanders came from Bali, part of the expanding Hindu Majapahit kingdom from the western archipelago. Enjoy a day of swimming and snorkelling on an

idyllic uninhabited picture postcard tropical island.

### Day 12 - At sea

During your journey at sea, make the most of the many services and activities on board. Treat yourself to a moment of relaxation in the spa or stay in shape in the fitness centre. Depending on the season, let yourself be tempted by the swimming pool or a spot of sunbathing. This journey without a port of call will also be an opportunity to enjoy the conferences or shows proposed on board, depending on the activities offered, or to do some shopping in the boutique or to meet the PONANT photographers in their dedicated space. As for lovers of the open sea, they will be able to visit the ship's upper deck to admire the spectacle of the waves and perhaps be lucky enough to observe marine species. A truly enchanted interlude, combining comfort, rest and entertainment.

### Day 13 - Darwin

Darwin is located in Australia's Northern Territory which is also known as the "Top End". It is the capital city and the most populated town of the Northern Territory. Darwin is a beautiful tropical city, a melting pot of people and cultures, over 50 different cultures live and work side by side that prides itself in its unique and friendly laid-back lifestyle. Come discover the town's still recent history through its emblematic buildings such as the new Parliament House opened in 1994, a magnificent example of tropical architecture or Admiralty House declared heritage place, a tropical-style home elevated on stilts that has survived two cyclones and numerous air raids.

The Small Cruise Ship Collection

[www.small-cruise-ships.com](http://www.small-cruise-ships.com)

01432 507 280 (within UK)

[info@small-cruise-ships.com](mailto:info@small-cruise-ships.com) | [small-cruise-ships.com](http://small-cruise-ships.com)



# The Small Cruise Ship Collection

[www.small-cruise-ships.com](http://www.small-cruise-ships.com)

[small-cruise-ships.com](http://small-cruise-ships.com)

[info@small-cruise-ships.com](mailto:info@small-cruise-ships.com)

Please Note:

Itineraries are subject to change.



The Small Cruise Ship Collection

[www.small-cruise-ships.com](http://www.small-cruise-ships.com)

**01432 507 280** (within UK)

[info@small-cruise-ships.com](mailto:info@small-cruise-ships.com) | [small-cruise-ships.com](http://small-cruise-ships.com)



## The Small Cruise Ship Collection

[www.small-cruise-ships.com](http://www.small-cruise-ships.com)

[small-cruise-ships.com](http://small-cruise-ships.com)

[info@small-cruise-ships.com](mailto:info@small-cruise-ships.com)

## YOUR SHIP: LE JACQUES CARTIER

**YOUR SHIP:** Le Jacques Cartier

**VESSEL TYPE:**

**LENGTH:**

**PASSENGER CAPACITY:**

**BUILT/REFURBISHED:**

Featuring innovative and environmentally-friendly equipment, elegantly designed staterooms, spacious suites with large windows, and lounge areas that open onto the outside, this new limited-capacity yacht boasting just 92 staterooms and suites will offer you a truly unique cruising experience. Le Jacques Cartier will embody refinement, intimacy and comfort. Aboard this ship that flies the French flag, you will experience the incomparable pleasure of an intimate cruise, with the possibility of exploring an ever-increasing range of destinations in an ethnic-chic ambiance with luxury service. Experience a luxurious setting where the accent is on authenticity and passion for travel. RESTAURANTS As it is an essential part of French culture, gastronomy will naturally have pride of place aboard this new ship. To the back of Deck 4, you will find a 260 m<sup>2</sup> panoramic restaurant which can accommodate all of our passengers in a single sitting. Designed differently to that on our other ships, this dining area, which opens onto the outside, will have a buffet of salads, desserts and cheeses at your disposal. Our discreet and attentive crew will provide table service for hot meals. In a relaxed atmosphere, an outdoor grill on Deck 3 will serve grilled meats with a variety of salads and desserts. PUBLIC AREAS Le

Jacques Cartier has many common areas that are designed and equipped to meet all of your needs while preserving the intimacy of each passenger. A 140 m<sup>2</sup> reception area includes: A reception/concierge desk, An excursions desk, The ship's administrative services, The sales office, manned by our Guest Relations Officer, Our 50 m<sup>2</sup> boutique which sells clothing, jewellery, beauty products, postcards and various accessories, Toilets accessible to passengers with reduced mobility. A new hydraulic platform with adjustable height provides: Easier boarding than on any other cruise ship, Easier Zodiac embarkation and disembarkation for expeditions, Easier access to the sea for swimming and practising various water sports such as kayaking or paddle-boarding. A pool deck offering: A pool with a panoramic view, equipped with a counter-current swimming system, A pleasant solarium, An outdoor bar and lounge with armchairs and sofas. A 200 m<sup>2</sup> main lounge which can accommodate all of our passengers to share convivial moments and to host activities organised during the day or evening. Lastly, a theatre that seats 188, equipped with: The latest sound and lighting technology, A LED wall as the stage backdrop, for the projection of high-resolution images and videos. Please click the following links to read more about Ponant and the other Ponant

The Small Cruise Ship Collection

[www.small-cruise-ships.com](http://www.small-cruise-ships.com)

01432 507 280 (within UK)

[info@small-cruise-ships.com](mailto:info@small-cruise-ships.com) | [small-cruise-ships.com](http://small-cruise-ships.com)



The Small Cruise Ship Collection

[www.small-cruise-ships.com](http://www.small-cruise-ships.com)

[small-cruise-ships.com](http://small-cruise-ships.com)      [info@small-cruise-ships.com](mailto:info@small-cruise-ships.com)



cruise ships.

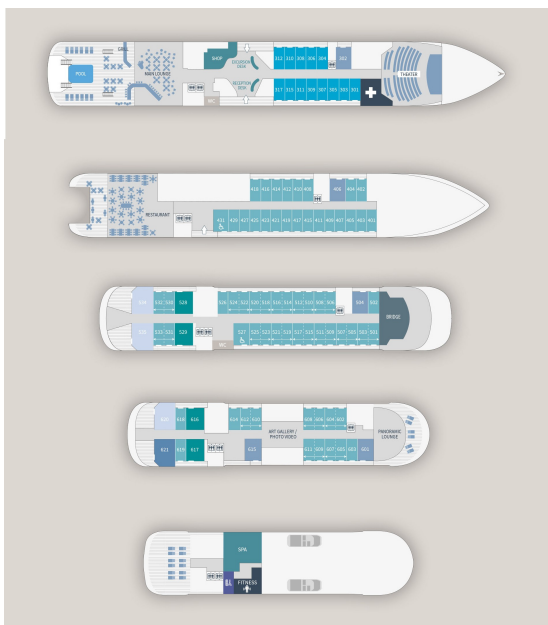
# The Small Cruise Ship Collection

www.small-cruise-ships.com

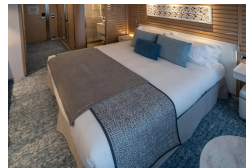
small-cruise-ships.com

info@small-cruise-ships.com

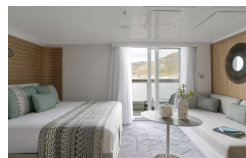
## INSIDE YOUR SHIP



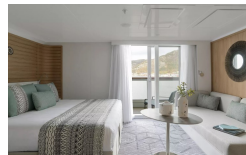
Deluxe Stateroom



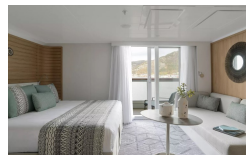
Deluxe Suite Deck 3



Deluxe Suite Deck 4



Deluxe Suite Deck 5



Deluxe Suite Deck 6

Grand Deluxe Suite Deck 5

Grand Deluxe Suite Deck 6

Owner's Suite

Prestige Deck 4

Prestige Deck 5

Prestige Deck 5 Suite

Prestige Deck 6

Prestige Deck 6 Suite

Privilege Suite Deck 5

# The Small Cruise Ship Collection

www.small-cruise-ships.com

small-cruise-ships.com

info@small-cruise-ships.com

## PRICING

### 01-May-2026 to 13-May-2026

Deluxe Suite Deck 5	£14575 GBP pp
Privilege Suite Deck 5	£21605 GBP pp
Prestige Deck 5 Suite	£19595 GBP pp
Grand Deluxe Suite Deck 6	£23705 GBP pp
Prestige Deck 5	£10005 GBP pp
Grand Deluxe Suite Deck 5	£23705 GBP pp
Deluxe Suite Deck 4	£14575 GBP pp
Prestige Deck 6 Suite	£20595 GBP pp
Deluxe Suite Deck 3	£14575 GBP pp
Privilege Suite Deck 6	£21605 GBP pp
Prestige Deck 4	£9555 GBP pp
Deluxe Suite Deck 6	£14575 GBP pp
Deluxe Stateroom	£8635 GBP pp
Prestige Deck 6	£10555 GBP pp

Privilege Suite Deck 5	£17415 GBP pp
Deluxe Suite Deck 4	£11825 GBP pp
Prestige Deck 6	£8635 GBP pp
Deluxe Suite Deck 3	£11825 GBP pp
Privilege Suite Deck 6	£17415 GBP pp
Prestige Deck 4	£7835 GBP pp
Prestige Deck 5	£8195 GBP pp
Deluxe Suite Deck 6	£11825 GBP pp
Deluxe Stateroom	£7105 GBP pp
Prestige Deck 6 Suite	£16615 GBP pp
Owner's Suite	£23385 GBP pp
Grand Deluxe Suite Deck 6	£19075 GBP pp
Deluxe Suite Deck 5	£11825 GBP pp
Prestige Deck 5 Suite	£15815 GBP pp
Grand Deluxe Suite Deck 5	£15915 GBP pp

### 15-May-2027 to 26-May-2027