



The Small Cruise
Ship Collection

www.small-cruise-ships.com



small-cruise-ships.com

info@small-cruise-ships.com

NORWEGIAN VOYAGE SOUTH

On the southbound voyage from Kirkenes to Bergen, you visit Lofoten's many ports during the daytime, sail between the myriad islands of the Helgeland coast and have time to visit Nidaros Cathedral in Trondheim and sample some of the city's culinary delights.



ITINERARY

Day 1 Ports: Kirkenes - Vardø - Båtsfjord - Berlevåg

Welcome aboard in Kirkenes! The border with Russia is only a few kilometres away, and the road signs in Kirkenes are in Norwegian and Russian. You can go as far as the border on one



The Small Cruise
Ship Collection

www.small-cruise-ships.com

01432 507 280 (within UK)

info@small-cruise-ships.com | small-cruise-ships.com



The Small Cruise Ship Collection

www.small-cruise-ships.com

small-cruise-ships.com

info@small-cruise-ships.com

of our excursions, or how about a visit to the Snowhotel where everything is made of ice and snow? Excursions Snowhotel Kirkenes King crab with a snowmobile on the frozen fjord, Kirkenes Dog sledding in the Arctic, Kirkenes Snowmobile safari in the Arctic, Kirkenes The Russian border, Kirkenes King crab fishing in a RIB, Kirkenes

Day 2 Ports: [Mehamn](#) - [Kjøllefjord](#) - [Honningsvåg](#) - [Havøysund](#) - [Hammerfest](#) - [Øksfjord](#) - [Skjervøy](#) - [Tromsø](#)

The polar landscape changes as we sail towards the west and south again. The great expanses are replaced by steep peaks, and in the evening we sail into Tromsø. You can take a stroll in the midnight sun or under the Northern Lights and explore the nightlife of the city dubbed "The Paris of the North". Excursions Snowmobile trip in the polar night, Mehamn Breakfast at the North Cape Plateau, Honningsvåg City Sightseeing in the Northernmost Town, Hammerfest

Day 3 Ports: [Finnsnes](#) - [Harstad](#) - [Risøyhamn](#) - [Sortland](#) - [Stokmarknes](#) - [Svolvær](#) - [Stamsund](#)

We enter the wild, idyllic Lofoten Islands. Beneath the jagged mountains lie chalky white sandy beaches and fishing villages with a vibrant fishing industry and locals using the coastal ships for everyday trips and transport. If the weather permits, we will enter the narrow Trollfjord. There is a strong possibility of spotting sea eagles here. Excursions A taste of Vesterålen, Harstad Experience Lofoten Svolvaer Golfing at Lofoten Links, Svolvaer Horse riding in Lofoten, Svolvaer Brewery visit and beer tasting, Svolvaer Sea eagle safari in a RIB, Svolvaer Sea Eagle Safari in Trollfjorden, disembarkation from the ship Hike by the best beach in Europe, Svolvaer

Day 4 Ports: [Bodø](#) - [Ørnes](#) - [Nesna](#) - [Sandnessjøen](#) - [Brønnøysund](#) - [Rørvik](#)

Now we have come so far south that we're crossing the Arctic Circle and sailing away from the polar night and the sunlit nights. But you can still see the Northern Lights in the winter, and it is never completely dark during the summer nights. Here you sail past a myriad of small islands, islets and skerries and past the special mountain, Torghatten, which has a hole in the middle. If you wish, you can also go on the trip to the mountain and enter the hole. Excursions Hiking at Torghatten, Brønnøysund The Norwegian salmon adventure, Brønnøysund Experience the World Heritage listed Vega Islands, Brønnøysund

Day 5 Ports: [Trondheim](#) - [Kristiansund](#) - [Molde](#) - [Ålesund](#)

We sail through the wide Trondheim fjord that is bounded by rolling farmland on both sides and return to the coast and the open sea. You can disembark in Kristiansund and be driven along the Atlantic Ocean Road, which has been called the world's most beautiful drive. The road meanders along islets and skerries, and afterwards you can re-embark in Molde. Excursions Trondheim and the Nidaros Cathedral Experience the Atlantic Road, Kristiansund The Atlantic Road and Bergtatt marble mine, Kristiansund

Day 6 Ports: [Torvik](#) - [Måløy](#) - [Florø](#) - [Bergen](#)

The last day of the tour takes you through a diverse coastal landscape of bare rocky mountains and a maze of sounds and waterways between many islands. The great fjords and glaciers are situated inland. Bergen awaits at the end of the voyage. We hope you have many good memories from your journey along the Norwegian coast with Havila Voyages, and we look forward to seeing you again.

Please Note:

Itineraries are subject to change.

The Small Cruise Ship Collection
www.small-cruise-ships.com

01432 507 280 (within UK)

info@small-cruise-ships.com | small-cruise-ships.com



The Small Cruise Ship Collection

www.small-cruise-ships.com



small-cruise-ships.com

info@small-cruise-ships.com

YOUR SHIP: CASTOR, CAPELLA, POLARIS OR POLLUX

YOUR SHIP:

Castor, Capella, Polaris or Pollux

VESSEL TYPE:

LENGTH:

PASSENGER CAPACITY:

BUILT/REFURBISHED:

The Newest, Most Eco-Friendly Ships on the Norwegian coastal route. Havila's coastal cruise ship will be home from home for a little while and you can relax and enjoy it. Cruise on the ships with decor that reflects Norwegian landscapes including the sea, the sky, mountains and glaciers. Natural materials and Nordic design creates a warm, genuine and unpretentious atmosphere, in which you are sure to feel at ease. You can enjoy the scenery gliding by outside from the ship's many public areas. Comfortable seats and panoramic windows give you the best possible views of the Norwegian coastline. Promenade deck and viewpoint If you want to feel the wind in your hair and inhale some good sea air, there's the outer deck and the viewpoint in the bow, or the promenade on Deck 8, that is long enough for a proper walk. Observation lounge The observation lounge on the top deck, Deck 9, has recliners under a glass roof, where you can look at the Northern Lights, the star-studded night sky or the midnight sun during the summer. The gym The machines in the gym are arranged in front of the window so that you can train and watch the passing landscape at the same time. Shopping Find unique clothes, books or local specialities in the shop on Deck 6, in the middle of the ship. Jacuzzi Enjoy the powerful jets

of hot water in the jacuzzi on the quarterdeck while looking out over the mountains and fjords. Sauna There is a sauna on the ships in the cloakroom area attached to the jacuzzis on Deck 8. Relax chairs Separate room with relax chairs for those who are not travelling far and do not need their own cabin. Cabins and suites Large cabins with Norwegian quality and design, where materials and colours reflect the landscape through which you will be sailing. Cafes and restaurants The ship has two restaurants and a cafe. The menus feature locally sourced food and the best that Norway has to offer. Facts about our Vessels The world's largest battery packs Four hours' sailing with zero emissions Energy-efficient hull design Locally sourced ingredients Heat recovery from the sea and cooling water Charging current from hydropower at the quay Liquid natural gas that cuts Co2 emissions by 25 % NOx emissions



reduced by 90%



The Small Cruise Ship Collection

www.small-cruise-ships.com

01432 507 280 (within UK)

info@small-cruise-ships.com | small-cruise-ships.com



The Small Cruise Ship Collection

www.small-cruise-ships.com



small-cruise-ships.com

info@small-cruise-ships.com

INSIDE YOUR SHIP

OUR NEW ECO-FRIENDLY SHIP

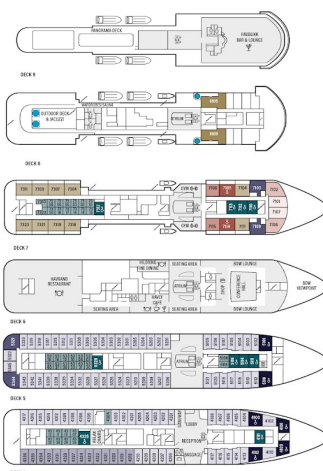
Enjoy silence, variation and comfort on board Havila Voyages. With our ships you can explore the world's most beautiful coast from the world's most eco-friendly vessels.

SHIP'S SPECIFICATIONS

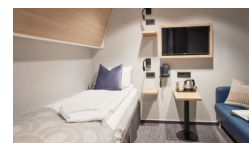
HAVILA CAPELLA & HAVILA CASTOR

TOTAL PASSENGERS 140
CAPACITY 140 GUESTS
Crew 20
Length 22.0 m
Width 3.70 m
Speed 14.0 knots
Range 1000
Supplies 10000 TONNAGE (GROSS TONNAGE)

- WATER
- WATER ACCESSIBLE
- WATER SUPERIOR DOUBLE
- WATER SUPERIOR TWIN
- WATER DELUXE
- WATER SUPERIOR ACCESSIBLE
- WATER DELUXE
- WATER DELUXE ACCESSIBLE
- WATER SUITES
- WATER SUITES



Interior. From



The Small Cruise Ship Collection

www.small-cruise-ships.com

01432 507 280 (within UK)

info@small-cruise-ships.com | small-cruise-ships.com



The Small Cruise Ship Collection

www.small-cruise-ships.com



small-cruise-ships.com

info@small-cruise-ships.com

PRICING

31-Dec-2025 to 05-Jan-2026

Interior. From	£653 GBP pp
----------------	-------------

14-Jan-2026 to 19-Jan-2026

Interior. From	£597 GBP pp
----------------	-------------

05-Feb-2026 to 10-Feb-2026

Interior. From	£669 GBP pp
----------------	-------------

10-Mar-2026 to 15-Mar-2026

Interior. From	£726 GBP pp
----------------	-------------

17-Apr-2026 to 22-Apr-2026

Interior. From	£669 GBP pp
----------------	-------------

26-Apr-2026 to 01-May-2026

Interior	£628 GBP pp
Seaview Superior Twin	£990 GBP pp
Seaview Superior Double	£990 GBP pp
Seaview Superior King	£1162 GBP pp
Aft View Mini Suite	£1592 GBP pp
Seaview Junior Suite	£1678 GBP pp

23-May-2026 to 28-May-2026

Interior. From	£669 GBP pp
----------------	-------------

11-Jun-2026 to 16-Jun-2026

Interior. From	£936 GBP pp
Panoramic Corner Mini Suite	£2571 GBP pp

14-Jun-2026 to 19-Jun-2026

Interior. From	£936 GBP pp
Panoramic Corner Mini Suite	£2571 GBP pp
Balcony Suite	£2840 GBP pp

22-Jun-2026 to 27-Jun-2026

Interior. From	£936 GBP pp
----------------	-------------

17-Jul-2026 to 22-Jul-2026

Interior. From	£888 GBP pp
----------------	-------------

14-Aug-2026 to 19-Aug-2026

Interior. From	£840 GBP pp
----------------	-------------

21-Sep-2026 to 26-Sep-2026

Interior. From	£766 GBP pp
----------------	-------------

10-Oct-2026 to 15-Oct-2026

Interior. From	£718 GBP pp
----------------	-------------

01-Nov-2026 to 06-Nov-2026

Interior. From	£693 GBP pp
----------------	-------------

18-Dec-2026 to 23-Dec-2026

Interior. From	£597 GBP pp
----------------	-------------

12-Jan-2027 to 17-Jan-2027

Interior. From	£575 GBP pp
----------------	-------------

31-Jan-2027 to 05-Feb-2027

Interior. From	£610 GBP pp
----------------	-------------

11-Feb-2027 to 16-Feb-2027



The Small Cruise Ship Collection

www.small-cruise-ships.com

01432 507 280 (within UK)

info@small-cruise-ships.com | small-cruise-ships.com



The Small Cruise Ship Collection

www.small-cruise-ships.com



small-cruise-ships.com

info@small-cruise-ships.com

Interior. From	£661 GBP pp
----------------	-------------

05-Mar-2027 to 10-Mar-2027

Interior. From	£696 GBP pp
----------------	-------------

27-Mar-2027 to 01-Apr-2027

Interior. From	£679 GBP pp
----------------	-------------

04-Apr-2027 to 09-Apr-2027

Interior. From	£626 GBP pp
----------------	-------------

21-Apr-2027 to 26-Apr-2027

Interior. From	£626 GBP pp
----------------	-------------

05-May-2027 to 10-May-2027

Interior. From	£661 GBP pp
----------------	-------------

15-Jun-2027 to 20-Jun-2027

Interior. From	£781 GBP pp
----------------	-------------

04-Jul-2027 to 09-Jul-2027

Interior. From	£816 GBP pp
----------------	-------------

26-Jul-2027 to 31-Jul-2027

Interior. From	£781 GBP pp
----------------	-------------

06-Aug-2027 to 11-Aug-2027

Interior. From	£781 GBP pp
----------------	-------------



The Small Cruise Ship Collection

www.small-cruise-ships.com

01432 507 280 (within UK)

info@small-cruise-ships.com | small-cruise-ships.com



The Small Cruise Ship Collection

www.small-cruise-ships.com



small-cruise-ships.com

info@small-cruise-ships.com

PRICING

20-Aug-2027 to 25-Aug-2027

Interior. From	£746 GBP pp
----------------	-------------

14-Sep-2027 to 19-Sep-2027

Interior. From	£713 GBP pp
----------------	-------------

06-Oct-2027 to 11-Oct-2027

Interior. From	£696 GBP pp
----------------	-------------

22-Oct-2027 to 27-Oct-2027

Interior. From	£661 GBP pp
----------------	-------------

19-Nov-2027 to 24-Nov-2027

Interior. From	£610 GBP pp
----------------	-------------

11-Dec-2027 to 16-Dec-2027

Interior. From	£575 GBP pp
----------------	-------------

30-Dec-2027 to 04-Jan-2028

Interior. From	£679 GBP pp
----------------	-------------



The Small Cruise Ship Collection

www.small-cruise-ships.com

01432 507 280 (within UK)

info@small-cruise-ships.com | small-cruise-ships.com