



The Small Cruise Ship Collection

www.small-cruise-ships.com



small-cruise-ships.com

info@small-cruise-ships.com

VERY BRITISH: BEATLES, BELFAST AND BLACK TEA CRUISE

This summer will be royal! From the legends of the Highlands or the musical roots of the Fab Four in Liverpool to the rugged charm of Belfast and the green coasts of Cornwall, Great Britain welcomes you in the very best tradition. What a pleasure!



ITINERARY

Day 1 Individual travel arrangements to cruise departure point Travemunde/Germany, departure 19.00 hrs

Travemunde has a fascinating history as a traditional seaport. Today, it attracts visitors with its charming Baltic Sea flair. It's an ideal starting point for boat trips, walks along the beach and discovering nearby Lubeck. Travemunde is located about 70 km (43 mi.) from Hamburg and 280 km (174 mi.) from Berlin.

Day 2 Daytime passage through the Kiel Canal/Germany



The Small Cruise Ship Collection

www.small-cruise-ships.com

01432 507 280 (within UK)

info@small-cruise-ships.com | small-cruise-ships.com



The Small Cruise Ship Collection

www.small-cruise-ships.com

small-cruise-ships.com

info@small-cruise-ships.com

The Kiel Canal is like a ribbon cutting through the landscapes of Schleswig-Holstein and linking the North Sea to the Baltic Sea between Brunsbüttel and Kiel. At just under 100 km (62 mi.) long, the canal is the busiest man-made waterway in the world and cuts up to 900 km (560 mi.) off shipping routes around Denmark. Opened in 1895 and originally known as the Kaiser Wilhelm Canal, the canal makes its way past little villages, idyllic meadows and extensive pasture land. The two locks are masterpieces of engineering and have also been in operation since 1895, protecting the canal from changing water levels caused by the tides or by the winds off the North Sea and Baltic Sea.

Day 3 Relaxation at sea

Day 4 Newhaven (Edinburgh)/Scotland/Great Britain, arrival 07.00 hrs

Between the medieval Old Town and the Georgian New Town, Edinburgh offers a fascinating mix of history and modernity. The impressive Scottish capital looks back over a long history and is famous for Edinburgh Castle, which sits proudly on top of Castle Rock where you can enjoy the wonderful views. Princes Street Gardens are a great place to wander around in the city centre, while the many pubs in the narrow, winding streets will tempt you to make a detour - Edinburgh has more pubs than almost anywhere else in Europe. However, the city is also a literary centre and home to some famous authors: Joanne K. Rowling and Robert Louis Stevenson found inspiration in the uniquely special atmosphere of the city.

Day 5 Newhaven (Edinburgh), departure 13.00 hrs

Day 6 Invergordon/Scotland/Great Britain, 08.00 - 18.00 hrs

Invergordon is situated on the banks of Cromarty Firth in the Scottish Islands. This charming little coastal town has developed over time from an industrial centre to a place steeped in history and culture. The High Street with its little shops and historic post office is charming, and along the seafront promenade you will be able to see some colourful murals that bring the town's past to life. The heaths and moors of the Highlands are full of myths and legends, including the mysterious sea monster Nessie in nearby Loch Ness. A special highlight for connoisseurs is the Invergordon Distillery, where you can try some of their finest whisky.

Day 7 Portree/Isle of Skye/Scotland/Great Britain, 12.00 - 19.00 hrs

The Isle of Skye, the largest island in the Inner Hebrides, reveals a wild beauty that is second to none. The island is made up of rugged landscape and fishing villages, with a glimpse of medieval castles in the distance. The iconic Old Man of Storr, a pinnacle of basalt rock that stands around 50 m (164 ft) tall, is an impressive landmark on the island. The main town of Portree, with its picturesque houses and colourful harbour, is an inviting place to while away some time - a place that takes its visitors on a picturesque journey between the land and the sea.

Day 8 Belfast/Northern Ireland/United Kingdom, 13.00 - 19.00 hrs

Belfast combines tradition and modernity in a fascinating way. Known for its eventful industrial history, especially shipbuilding and the Titanic, the capital of Northern Ireland has developed into a cultural hotspot today. The murals or impressive wall paintings tell of its past and symbolise peace. Sights such as the Titanic Belfast Museum and St George's Market attract visitors, while the magnificent City Hall adorns the historic city centre.

The Small Cruise Ship Collection

www.small-cruise-ships.com

01432 507 280 (within UK)

info@small-cruise-ships.com | small-cruise-ships.com



The Small Cruise Ship Collection

www.small-cruise-ships.com

small-cruise-ships.com

info@small-cruise-ships.com

Day 9 Liverpool/England/Great Britain, 08.00 – 18.00 hrs

Music history comes alive in Liverpool, the city at the mouth of the River Mersey: the legendary Beatles transformed this former industrial centre into a mecca for music lovers. Ever since Liverpool was 2008 European Capital of Culture, the city's cultural life has truly blossomed - in addition to iconic places such as Penny Lane and Strawberry Fields, important art galleries such as the Tate Liverpool have been established. Whether it's Premier League football, the magnificent cathedrals or the port with its docks - the diversity of its highlights ensures that Liverpool will leave a lasting impression.

Day 10 Fishguard/Wales/Great Britain, 08.00 – 18.00 hrs

The tranquil town of Fishguard - or Abergwaun, as it is called by the Welsh - is nestled up in the hills in the north of the county of Pembrokeshire and radiates peace and tranquillity. The main town is situated on a hilltop, while the lower town runs along the small river Gwaun, which flows into the idyllic harbour. Picturesque little houses line the water here, and tiny boats gently rock on the waves. With its location directly on the Pembrokeshire Coast Path, Fishguard is a perfect starting point for hikes along the spectacular cliffs and to hidden coves - a nature lover's paradise.

Day 11 Fowey/England/Great Britain, 12.00 – 17.00 hrs

The charm of Fowey, a small harbour town on the south coast of Cornwall, is best discovered on a leisurely stroll through the winding lanes. The pastel-coloured houses nestle picturesquely into the hillside, and after a short climb from Bull Hill you can enjoy views of the river. The wildly romantic landscape of secluded coves and green meadows are an invitation to lose yourself in your daydreams as you wander along the magnificent coastal path. But Fowey offers more than just beautiful views:

first-class restaurants and galleries provide a wide range of opportunities to enjoy and relax.

Day 12 Portsmouth/England/Great Britain, 07.00 – 19.00 hrs

Portsmouth on the south coast of England in the county of Hampshire has a seafaring history stretching back over 800 years. The city has been an important marine base in England since the Middle Ages and today it is a symbol of maritime tradition - visitors to the Royal Marines Museum can learn some interesting facts about its eventful history. After the Second World War, many historic buildings, including both cathedrals, were lovingly restored. The Spinnaker Tower in the harbour dominates the city's skyline: at 170 m (558 ft) tall, the tower offers amazing views over the bay and has been a proud landmark of the port city since it was opened in 2005.

Day 13 Relaxation at sea

Day 14 Hamburg/Germany, arrival 07.00 hrs Individual travel arrangements from cruise arrival point

Hamburg, the "pearl of the north", has a lively atmosphere and rich history. From the vibrant harbour with its majestic ships to the historic red-brick warehouse district, the city features a highly distinctive flair. The Alster, surrounded by green banks, invites you to take relaxing boat trips. The historic old town, with its charming lanes and imposing town hall, exudes a sense of tradition. Culturally, Hamburg offers a variety of museums, theatres and concert halls that inspire visitors with art and music in abundance. The famous Reeperbahn in the St. Pauli district attracts visitors with its diverse nightlife. Hamburg is a city that manages to combine tradition and modernity in a fascinating way.

The Small Cruise Ship Collection
www.small-cruise-ships.com

01432 507 280 (within UK)

info@small-cruise-ships.com | small-cruise-ships.com



The Small Cruise Ship Collection

www.small-cruise-ships.com



small-cruise-ships.com

info@small-cruise-ships.com

Please Note:

* The shore activities are not included in the cruise price and are in the planning stage. Subject to change.



The Small Cruise Ship Collection

www.small-cruise-ships.com

01432 507 280 (within UK)

info@small-cruise-ships.com | small-cruise-ships.com



The Small Cruise Ship Collection

www.small-cruise-ships.com



small-cruise-ships.com

info@small-cruise-ships.com

YOUR SHIP: EUROPA

YOUR SHIP: Europa

VESSEL TYPE:

LENGTH:

PASSENGER CAPACITY:

BUILT/REFURBISHED:

enhancements have introduced updated fitness and wellness concepts for an even more elevated onboard experience. Blending sophistication, comfort, and flexibility, MS EUROPA delivers a truly premium voyage to destinations

Extensive space for a maximum of 400 guests A crew-to-guest ratio of almost one to one Outside suites only, most with a veranda Five restaurants for the ultimate in culinary indulgence - including THE GLOBE by three-star chef Kevin Fehling Top-class entertainment: experience international artists and experts live on board EUROPA Refresh: new fitness and wellness concepts for even more well-being MS EUROPA is an award-winning luxury cruise ship renowned for setting global standards in refined small-ship cruising. Accommodating a maximum of just 400 guests, the ship offers an intimate and highly personalised experience, supported by an almost one-to-one crew-to-guest ratio. Designed around the concept of casual luxury, EUROPA combines spacious surroundings, attentive service, and elegant all-suite accommodation, with all suites featuring ocean views and most offering private verandas. Onboard, guests can enjoy five exceptional restaurants, including fine dining concepts created in collaboration with acclaimed chefs, alongside world-class entertainment, wellness facilities, and thoughtfully curated enrichment experiences. The ship's smaller size allows access to unique itineraries and exclusive ports beyond the reach of larger vessels, while recent EUROPA Refresh



worldwide.



The Small Cruise Ship Collection

www.small-cruise-ships.com

01432 507 280 (within UK)

info@small-cruise-ships.com | small-cruise-ships.com



The Small Cruise Ship Collection

www.small-cruise-ships.com



small-cruise-ships.com

info@small-cruise-ships.com

INSIDE YOUR SHIP

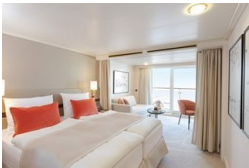
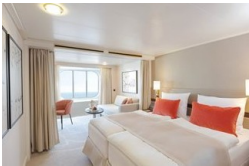
Penthouse Deluxe Suite

SPA Suite



Suite with panorama window

Veranda Suite Cat. 4-5





The Small Cruise Ship Collection

www.small-cruise-ships.com



small-cruise-ships.com

info@small-cruise-ships.com

PRICING

17-Aug-2027 to 30-Aug-2027

| | |
|----------------------------|---------------|
| Suite with panorama window | £7389 GBP pp |
| Veranda Suite Cat. 4-5 | £8565 GBP pp |
| Veranda Suite Cat. 6-7 | £10505 GBP pp |
| SPA Suite | £11345 GBP pp |
| Penthouse Deluxe Suite | £17609 GBP pp |



The Small Cruise Ship Collection

www.small-cruise-ships.com

01432 507 280 (within UK)

info@small-cruise-ships.com | small-cruise-ships.com