



The Small Cruise  
Ship Collection

[www.small-cruise-ships.com](http://www.small-cruise-ships.com)



[small-cruise-ships.com](http://small-cruise-ships.com)

[info@small-cruise-ships.com](mailto:info@small-cruise-ships.com)

## VANUATU, SOLOMONS, NEW BRITAIN AND BOUGAINVILLE - SOUTH PACIFIC SMALL SHIP CRUISE

Sail north aboard Coral Adventurer as we embark on a 16-night expedition through the remote and less visited outer islands of Vanuatu, the Solomon Islands and into the captivating region of Bougainville. Along the way experience striking landscapes, pristine islands and reefs, unique wildlife and small island communities lost in time with rich cultural traditions to share. Climb spectacular Mount Yasur volcano at Tanna Island, followed by an exhilarating dive and snorkel around Nguna Island. Immerse yourself in the vibrant culture of local villages with captivating performances like the women's Water Dance at Marau Sound, and the famous Snake Dance of Rah Island. Partake in conservation efforts by helping release turtle hatchlings at the Amavon Islands, visit historic World War II battle sites and learn about Malaita's headhunting past. We spend two days in the rarely visited Autonomous Region of Bougainville to explore its cultural and natural wonders and tumultuous history. Our voyage closes in New Britain's historic Rabaul - learn about the catastrophic eruption of Mount Tavurvur in 1994 and see a view of the harbour from the volcano observatory. Enjoy the warm Australian hospitality of our crew, learn from our expert guides who share their knowledge, indulge in fresh locally inspired cuisine, and the company of like-minded explorers on this unique and immersive expedition experience.



The Small Cruise  
Ship Collection

[www.small-cruise-ships.com](http://www.small-cruise-ships.com)

**01432 507 280** (within UK)

[info@small-cruise-ships.com](mailto:info@small-cruise-ships.com) | [small-cruise-ships.com](http://small-cruise-ships.com)



## The Small Cruise Ship Collection

[www.small-cruise-ships.com](http://www.small-cruise-ships.com)



[small-cruise-ships.com](http://small-cruise-ships.com)

[info@small-cruise-ships.com](mailto:info@small-cruise-ships.com)



### ITINERARY

#### DAY 1: DEPART PORT VILA, VANUATU

Board the Coral Adventurer at 3:30pm for a 4:30pm departure. Settle into your cabin and relax as we set sail towards Vanuatu's outer islands. In the evening, join the Captain for welcome drinks and meet your crew and fellow guests as the sun sets.

#### TANNA, VANUATU

Your first stop will be the most fertile island in Vanuatu; Tanna Island. Ride a 4WD to the base of active Mt Yasur volcano and enjoy a guided walk with your Expedition Leader to the Caldera's

Rim, witnessing breathtaking views of the volcano's smoking centre. Engage with the locals to delve deeper into the Tannese culture and unravel the enigma surrounding John Frum Cargo--a revered messenger who prophesied the arrival of prosperity to the island through American forces during World War II, believed to dwell within Mt Yasur.

#### NGUNA, VANUATU

This morning, we make our way to Nguna Island which offers a diverse range of activities, from walks and snorkeling to immersive cultural experiences. Embark on an hour-long trek to Mt Marow or explore the local village to experience their culture. Enjoy a well-earned lunch prepared by our chefs on board before heading out to explore the Nguna-Pele Marine Protected area, showcasing vibrant coral reefs, sea grass beds, mangrove forests, and intertidal lagoons.

#### MALEKULA, VANUATU

Malekula is the most culturally and linguistically diverse island of Vanuatu with the primary groups clustered into Big Nambas and Small Nambas. The island's lush landscapes offer opportunities for adventure, along with its abundant flora and fauna providing a glimpse into its untouched natural beauty. Visit a local village and learn about the unique culture of this island before concluding your visit with a relaxing swim on the beach or snorkel over the stunning reef.

#### MAEWO, VANUATU



The Small Cruise Ship Collection

[www.small-cruise-ships.com](http://www.small-cruise-ships.com)

01432 507 280 (within UK)

[info@small-cruise-ships.com](mailto:info@small-cruise-ships.com) | [small-cruise-ships.com](http://small-cruise-ships.com)





## The Small Cruise Ship Collection

[www.small-cruise-ships.com](http://www.small-cruise-ships.com)



[small-cruise-ships.com](http://small-cruise-ships.com)

[info@small-cruise-ships.com](mailto:info@small-cruise-ships.com)

Today we head to Maewo, a remarkable island famed for its waterfalls and springs. Enjoy bushwalking, birdwatching and waterfall activities throughout the day before cruising up the spectacular western coastline, with the opportunity to for Xplorer rides to view sea caves.

### MOTO LAVA & RAH ISLAND, VANUATU

Known for its white sand beaches and coral reefs, Rah is the smallest but most well-known island in the Banks region. Experience the allure of Rah Island, renowned for hosting one of Vanuatu's most famous cultural dances--the snake dance, which is performed by the men in the village, accompanied by traditional drums and kastom songs. Challenge yourself with an optional guided climb of Mota Lava's Sleeping Mountain. Your visit to Rah Island promises a unique blend of indigenous artistry and warm hospitality.

### SEA DAY

Enjoy a peaceful day at sea with presentations by our expert Guest Lecturers as we make our way towards Santa Ana in the Solomon Islands. For free time, many guests choose to chat with new-found-friends, read a book from our onboard library, browse the art gallery or simply enjoy gazing out to sea.

### SANTA ANA (OWARAHA), SOLOMON ISLANDS

Embark on a cultural adventure at Santa Ana, a small island southeast of San Cristobal, known for its distinctive bone fishhooks and creative fishing floats. Upon arrival, receive a warm welcome from locals, greeted by village warriors wielding swords and blowing conch shell horns. Explore the island's lush landscapes on a guided walk led by a naturalist, traversing shady forests adorned with vibrant orchids, before taking to the water for snorkelling opportunities.

### MARAU SOUND, SOLOMON ISLANDS

Spend today exploring the stunning Marau Sound, a haven protected by five marine reserves. It is a geographical crossroad separating Guadalcanal's calm northern waters from its Tasi Mauri or 'weather coast'. Start your day with the option to snorkel or kayak in the turquoise waters. In the afternoon, visit a village on Marapa Island known for its famous water dancers. Choose from walking options leading to waterfalls, perfect for spotting rainforest wildlife. Divers are treated to an incredible wall dive, while snorkelers enjoy diverse marine experiences. Relax on a sand cay where locals offer shelter, umbrellas, and coconut drinks- a perfect way to end your day.

### MALAITA, SOLOMON ISLANDS

Step ashore to experience the diverse landscapes of Malaita, the Solomons' most populous island, marked by its involvement in the 'Tension' dispute from 1998 to 2003. The 'saltwater people' of the lagoons live on small artificial islands built up on sand bars, where they were forced to flee from the headhunters.



The Small Cruise Ship Collection

[www.small-cruise-ships.com](http://www.small-cruise-ships.com)

**01432 507 280** (within UK)

[info@small-cruise-ships.com](mailto:info@small-cruise-ships.com) | [small-cruise-ships.com](http://small-cruise-ships.com)



## The Small Cruise Ship Collection

[www.small-cruise-ships.com](http://www.small-cruise-ships.com)



[small-cruise-ships.com](http://small-cruise-ships.com)

[info@small-cruise-ships.com](mailto:info@small-cruise-ships.com)

Visit Langa Langa Lagoon or Auki to learn about their culture and headhunting history. Later in the day, there will be opportunity for snorkelling in the lagoon.

### RUSSELL ISLANDS, SOLOMON ISLANDS

Explore the World War II history of Russell Islands, where the unopposed occupation by US forces was one of the first steps in the Allied advance along the Solomon Islands. The island's abundant coconut plantations are now the largest on any Pacific Island. This is a great spot for snorkelling and diving: the sea floor is littered with World War II wreckage. Listen to a 'bamboo band' performance during a visit to a local village.

### ARNAVONS, SOLOMON ISLANDS

Spend the day exploring the Arnavon Islands marine reserve, home to the largest rookery of endangered Hawksbill Turtles in the South Pacific Region. In 1995 the US based Nature Conservancy helped three local communities come together to create the Arnavon Community Marine Conservation area - it was the first protected area to be established within the Solomons and covers over 40,000 acres of land and sea. Later in the day, travel ashore at Kerehikapa Island and see the magical moment of turtle hatchlings emerging from their nests.

### CHOISEUL BAY - CHOISEUL ISLAND, SOLOMON ISLANDS

Choiseul Bay, in Choiseul Island's northwest, is our last stop in the Solomon Islands. In this beautiful bay surrounded by

mountains, we will make our way to Taro Island which is known to be the oldest known site of agriculture in the Pacific. The island is also known for its white sandy beaches where you can further enjoy water activities.

### TWO DAYS IN THE AUTONOMOUS REGION OF BOUGAINVILLE

Cruise in the wake of French explorer Louis-Antoine de Bougainville, along the coastline of the island he named after himself in 1768 - nevermind that Melanesian and Austronesian people had populated the island for many millennia prior. The region has two main islands, Bougainville being mountainous, and Buka largely characterized by flat terrain. Tourism within its verdant rainforests remains minimal and untouched, safeguarding its pristine natural allure.

We explore islands by snorkelling, and delve into mainland sites of historical significance. Engage with the locals in a country where 21 different languages are spoken, reflecting the rich cultural diversity of this region.

### RABAUL & DUKE OF YORK ISLANDS, PAPUA NEW GUINEA

Before a volcanic eruption devastated it in 1994, Rabaul served as the provincial capital of New Britain province. It was a key Japanese stronghold during the war, housing 110,000 troops by 1943. Extensive tunnel networks were constructed for shelter from allied air raids, along with barracks and support facilities. Tour the abandoned 'ghost town' area of Rabaul and surrounds: see the ruins of Rabaul, the hot springs and Mount Tavurvur, World War II bunkers and the famous Rabaul Volcano



The Small Cruise Ship Collection

[www.small-cruise-ships.com](http://www.small-cruise-ships.com)

**01432 507 280** (within UK)

[info@small-cruise-ships.com](mailto:info@small-cruise-ships.com) | [small-cruise-ships.com](http://small-cruise-ships.com)



## The Small Cruise Ship Collection

[www.small-cruise-ships.com](http://www.small-cruise-ships.com)



[small-cruise-ships.com](http://small-cruise-ships.com)

[info@small-cruise-ships.com](mailto:info@small-cruise-ships.com)

Observatory. option to embark on an ascent of Mount Tavurvur Volcano, while snorkeling excursions around the Duke of York Islands await those seeking underwater adventures.

### DAY 17: RABAU, PAPUA NEW GUINEA

Disembark at 08:00am and join a tour of Kokopo, including the township, war museum and bustling markets. Finish with lunch and time to relax at the Rapopo Plantation Resort before being transferred to the airport for your charter flight to Cairns.

Note: post-cruise tour is only included for those passengers that have booked the charter flight.

#### Please note:

This itinerary is an indication of the destinations we visit and activities on offer. Throughout the expedition we may make changes to the itinerary as necessary to maximise your expeditionary experience. Allowances may be made for seasonal variations, weather, tidal conditions, and any other event that may affect the operation of the vessel. Coral Expeditions suggests that you do not arrive on the day of embarkation or depart on the day of disembarkation due to any changes that may occur in scheduling.





The Small Cruise  
Ship Collection

[www.small-cruise-ships.com](http://www.small-cruise-ships.com)



[small-cruise-ships.com](http://small-cruise-ships.com)

[info@small-cruise-ships.com](mailto:info@small-cruise-ships.com)

## YOUR SHIP: CORAL ADVENTURER

**YOUR SHIP:** Coral Adventurer

**VESSEL TYPE:**

**LENGTH:**

**PASSENGER CAPACITY:**

**BUILT/REFURBISHED:**

Launched in 2018 with her maiden voyage in 2019, Coral Adventurer has been designed and built to take you closer to unspoilt vistas in comfort, style and safety. A culmination of two years of design and three decades of passion for expedition cruising. BIGGER IS NOT BETTER At a time when cruise ships get larger and glitzier, we remain stubbornly compact and intimate. Our ships are designed to take you to unspoilt destinations not accessible to large ships. We want you to have the luxury of space, dine with whom you please, or find your quiet corner on deck. So Coral Adventurer has just 60 spacious cabins. This preserves the intimate atmosphere we are known for without sacrificing the stability and comfort of a true ocean going vessel. BUILT FOR DISCOVERY The Coral Adventurer features the trademark dual 'Xplorer' tenders cradled on a hydraulic platform slung off the back of the ship, enabling our guests to go ashore in comfort and ease. The shallow draft of the ship enables us to go closer to shore than larger ships. Together with a renowned expedition team, this new ship will offer the most advanced expedition capabilities of any small ship afloat. BUILT FOR COMFORT With active stabilisers dampening sea motion, mostly balcony cabins, and interiors designed with the colours and

textures of tropical Queensland, the Coral Adventurer is a comfortable ship. She features promenade decks, generous communal areas that accommodate all guests, a passenger elevator, and an open kitchen where you can observe our chefs whip up small batch cuisine from locally sourced ingredients. BUILT FOR PERSONAL SERVICE The Coral Adventurer will continue a proud tradition of Australian flagged vessels with friendly and professional Australian crew. The onboard atmosphere remains refreshingly informal and intimate. Take your seat at our bridge lounge, chat with the captain at your leisure or accompany our chefs on a market tour. Food and wine features Single seating dining area with communal 'wine table' finished with Australian stone; serving buffet breakfast and lunch, and multi-course table d'hôte dinners Showcase galley visible to guests for fresh small-batch cuisine featuring Australian produce Multiple indoor and outdoor bars, including the Explorer bar on the sundeck for sunset drinks with 180 degree views Curated wine cellar featuring modestly priced boutique wines for daily drinking and exceptional vintage Australian reds. Guest comfort All outside guest cabins with en-suite bathrooms; majority have private balcony Active stabilisers to dampen sea motion Gym equipped with elliptical trainers and treadmills Passenger elevator Wi-Fi available in all



The Small Cruise  
Ship Collection

[www.small-cruise-ships.com](http://www.small-cruise-ships.com)

01432 507 280 (within UK)

[info@small-cruise-ships.com](mailto:info@small-cruise-ships.com) | [small-cruise-ships.com](http://small-cruise-ships.com)



# The Small Cruise Ship Collection

[www.small-cruise-ships.com](http://www.small-cruise-ships.com)



[small-cruise-ships.com](http://small-cruise-ships.com)

[info@small-cruise-ships.com](mailto:info@small-cruise-ships.com)



guest areas



The Small Cruise Ship Collection

[www.small-cruise-ships.com](http://www.small-cruise-ships.com)

**01432 507 280** (within UK)

[info@small-cruise-ships.com](mailto:info@small-cruise-ships.com) | [small-cruise-ships.com](http://small-cruise-ships.com)





# The Small Cruise Ship Collection

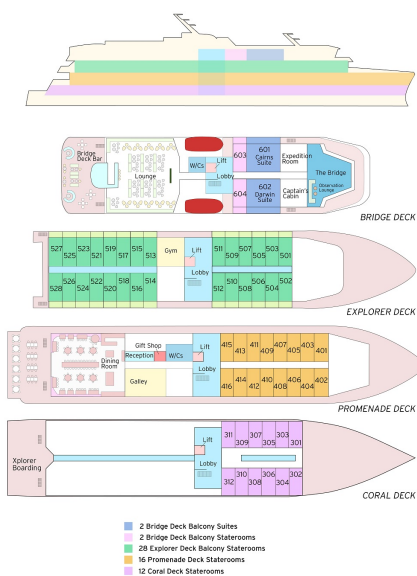
[www.small-cruise-ships.com](http://www.small-cruise-ships.com)



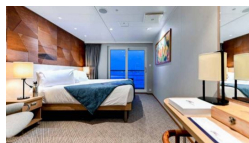
[small-cruise-ships.com](http://small-cruise-ships.com)

[info@small-cruise-ships.com](mailto:info@small-cruise-ships.com)

## INSIDE YOUR SHIP



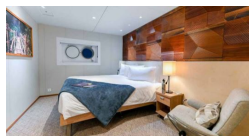
BRIDGE DECK BALCONY STATEROOM



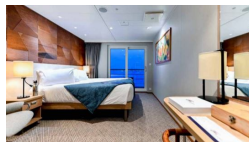
BRIDGE DECK BALCONY SUITE



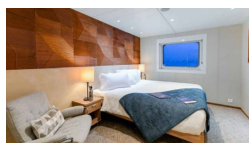
CORAL DECK STATEROOM



EXPLORER DECK BALCONY STATEROOM



PROMENADE DECK STATEROOM







## The Small Cruise Ship Collection

[www.small-cruise-ships.com](http://www.small-cruise-ships.com)



[small-cruise-ships.com](http://small-cruise-ships.com)

[info@small-cruise-ships.com](mailto:info@small-cruise-ships.com)

## PRICING

29-Jan-2026 to 14-Feb-2026

BRIDGE DECK BALCONY STATEROOM	£14795 GBP pp
BRIDGE DECK BALCONY SUITE	£18895 GBP pp
PROMENADE DECK STATEROOM	£10345 GBP pp
CORAL DECK STATEROOM	£8695 GBP pp
EXPLORER DECK BALCONY STATEROOM	£13545 GBP pp



The Small Cruise  
Ship Collection

[www.small-cruise-ships.com](http://www.small-cruise-ships.com)

01432 507 280 (within UK)

[info@small-cruise-ships.com](mailto:info@small-cruise-ships.com) | [small-cruise-ships.com](http://small-cruise-ships.com)