

## The Small Cruise Ship Collection

www.small-cruise-ships.com

small-cruise-ships.com

info@small-cruise-ships.com

## UNKNOWN JAPAN AND SOUTH KOREA: A MEETING OF OPPOSITES

Uncover the cultural and natural treasures of Korea and Japan on this extraordinary voyage from Incheon to Tomakomai aboard HANSEATIC spirit. Begin in vibrant Seoul before exploring South Korea's bustling ports and Japan's rarely visited west coast, where centuries-old traditions meet cutting-edge modernity. Wander through ancient temples, serene gardens, and atmospheric shrines, and admire the architectural elegance of castles, pagodas, and tea houses. From Hiroshima's moving history to the sacred island of Miyajima and the hot springs of Beppu, each stop reveals a new facet of Asia's rich heritage. With onboard experts deepening your understanding of local customs and landscapes, this journey offers an intimate, authentic glimpse into the spirit of Japan -- a land of beauty, balance, and timeless grace.



### ITINERARY

Day 1 Incheon (Seoul)/South Korea

Incheon (Seoul)/South Korea, departure 20.00 hrs

Day 2 Relaxation at sea

Day 3 Busan/South Korea

Busan/South Korea, 08.00 - 20.00 hrs

Mysterious, remote and little-known: in South Korea, you will

The Small Cruise Ship Collection  
www.small-cruise-ships.com

01432 507 280 (within UK)

info@small-cruise-ships.com | small-cruise-ships.com



## The Small Cruise Ship Collection

[www.small-cruise-ships.com](http://www.small-cruise-ships.com)

[small-cruise-ships.com](http://small-cruise-ships.com)

[info@small-cruise-ships.com](mailto:info@small-cruise-ships.com)

enter a fascinating realm. In the "Land of Morning Calm", at the south-eastern tip of the Korean Peninsula, the city of Busan conjures up the many faces of Asia. Here, traditional ceremonies and historic temples still have their place alongside more modern aspects. A trip on the Sky Capsule, a four-seater elevated rail carriage, offers impressive views of Busan's coastline and hills. The city is also the starting point for discovering the relics of the old Silla dynasty and sacred sites in the form of colourfully embellished temples. Get a sense of the Koreans' close relationship with nature along the dramatic coastline with its small suspension bridges. You can also satisfy your hunger for adventure with insights into the traditional lifestyle and local cuisine, including the Korean "fire meat" bulgogi.

### Day 4 Karatsu/Japan

Karatsu/Japan, 07.00 - 15.30 hrs

Your cruise offers plenty of opportunities for individual discoveries - explore the centre of the coastal resort and the sandy beaches in Karatsu, for instance, or wander through its pine forests. You will be rewarded with profound insights into Japanese culture and nature. Opt to explore on your own or take a group excursion with your experts: Karatsu Castle is one of the most beautiful in Japan and is well worth a visit. The pagoda-style gem sits majestically on top of a hill. Whether you climb up or take the lift, from the top floor observatory you can enjoy far-reaching panoramic views over the historic region.

### Day 5 Hiroshima

Hiroshima, arrival 08.00 hrs

Hiroshima symbolises a very eventful period in modern history -

your exploration of the area will be shaped by memorials. Tracing the tragic events of 1945 will take you to the Peace Memorial Park, designed by star architect Kenzo Tange. Together with your experts on board, who will provide a commentary for your visit, experience Hiroshima as an impressive place of historic reflection, as well as a symbol of hope and new beginnings. Hiroshima Castle, also known as Rijo, will take you back to times long past. It is a perfect example of Japanese architecture in the traditional pagoda style and its museum tells the story of the samurai. With its variety of miniature landscapes, the Shukkeien Garden displays Japanese landscape gardening as an art form: pause for a while at the tea houses and Koi carp ponds to find inner peace and serenity.

### Day 6 Miyajima

Hiroshima, departure 06.00 hrs

Miyajima, 07.00 - 18.00 hrs

The picturesque coastline of the sacred island of Miyajima has inspired both art and literature. On an independent shore visit, discover its allure and one of Japan's famous landmarks: the Itsukushima Shrine, one of the most photographed places in the country and a symbol of the ancient veneration of nature characteristic of Shintoism. At high tide, its 16 m (52 ft) high Torii, a red gate made of camphor wood, reflects in the water and appears to float there. There are over a hundred thousand Shinto shrines in Japan and this one is not only the most famous, but also one of the most beautiful.

### Day 7 Beppu

Beppu, 09.30 - 22.30 hrs

During lectures and talks on board, your experts will also talk



## The Small Cruise Ship Collection

[www.small-cruise-ships.com](http://www.small-cruise-ships.com)

[small-cruise-ships.com](http://small-cruise-ships.com)

[info@small-cruise-ships.com](mailto:info@small-cruise-ships.com)

about Japan's location on a geological fracture zone of four tectonic plates. The resulting hydrothermal activity is, amongst other things, the basis for the onsen baths with healing hot springs. The spa city of Beppu demonstrates how bathing rituals shape Japanese culture. There are more than 2,000 of these healing baths in Japan, which is hardly surprising for a country in which almost every mountain is a volcano. Onsen are a great place to relax and unwind and enjoy their healing properties. Even the samurai asked for support from the deities while bathing in an onsen. Immerse yourself in this relaxing tradition.

### Day 8 Relaxation at sea

### Day 9 Maizuru

Maizuru, 08.00 - 19.00 hrs

Maizuru, with its charming red brick buildings, opens the doors to a world full of history - your experts on board will become passionate narrators as they shed light on the various chapters of Japan's past. Former naval buildings and numerous museums reflect the importance of the port during the Russo-Japanese War of 1904/05 and the city's development into a naval base. Here, your understanding of the Far Eastern world of faith will also unfold like a "crane spreading its wings", which is what the name Maizuru means. The city is the perfect starting point for visiting the spiritual centre of the country: Kyoto - the old imperial city with countless temples and lavishly decorated shrines is a highlight of this cruise.

### Day 10 Kanazawa

Kanazawa, 07.00 - 19.00 hrs

Kanazawa is famous for its gold leaf production, which has been

perfected here over the centuries. The skill required to process the precious metal into wafer-thin sheets has earned the city an international reputation as the "gold leaf capital". The architecture and cultural history of the town have a glitter of their own. In the traditional geisha district, you can visit many of the well-preserved tea houses from the Edo period, where geishas once entertained their guests. Another district offers an insight into the lifestyle of the samurai, with historic houses, traditional Japanese gardens, tatami mats and original furniture. By contrast, the famous Kenrokuen Garden perfectly combines spaciousness and seclusion, artistry and tradition, coolness and harmony.

### Day 11 Sado Island

Sado Island, 08.00 - 18.00 hrs

In Japan, fishing is considered a male domain, but on Sado Island, women have carved out a niche for themselves in the fishing industry: they fish from flat, round, wooden barrel boats - a unique cultural heritage. With the increasing mechanisation of fishing, the number of women fishing from these barrel boats has fallen sharply. Nevertheless, efforts are being made to preserve this unique tradition and pass it on to future generations.

### Day 12 Akita

Akita, 08.00 - 17.00 hrs

As in many regions of Japan, the samurai caste was once an important part of society in Akita Prefecture - the samurai were feudal rulers and warriors known for their loyalty and military service. The city of Akita is an invitation for you to explore the old samurai district of Kakunodate with its traditional





architecture. The Akita, an ancient Japanese dog breed, is said to have been the samurai's faithful companion. In 1931, it was declared a national treasure by Emperor Hirohito. The Akita Museum of Art is a more modern creation: the iconic building with a free-standing staircase and triangular skylight was designed by the renowned architect Tadao Ando

#### Day 13 Hakodate

Hakodate, 07.00 - 17.00 hrs

At the south-eastern tip of Japan's second largest and northernmost main island, Hokkaido, lies the city of Hakodate, dominated by its local mountain at 335 m (1,099 ft) above sea level. From its summit or from the Goryokaku Tower, you can enjoy beautiful views of the city with its famous star-shaped fortress. Hakodate was one of the first Japanese ports to open to foreign ships in 1854. This led to the development of the historic Motomachi district, with its 19th century buildings in the European style. Also of architectural interest is the Future University Hakodate designed by Tokyo architect Riken Yamamoto: with features from 1970s structuralism, the building is a successful example of the high-tech style made famous by Norman Foster.

#### Day 14 Tomakomai/Japan

Tomakomai/Japan, arrival 07.00 hrs

#### Please Note:

Itineraries are subject to change.



## The Small Cruise Ship Collection

[www.small-cruise-ships.com](http://www.small-cruise-ships.com)

[small-cruise-ships.com](http://small-cruise-ships.com)

[info@small-cruise-ships.com](mailto:info@small-cruise-ships.com)

## YOUR SHIP: HANSEATIC INSPIRATION

**YOUR SHIP:** Hanseatic Inspiration

**VESSEL TYPE:**

**LENGTH:**

**PASSENGER CAPACITY:**

**BUILT/REFURBISHED:**

The HANSEATIC inspiration, a small, state-of-the-art expedition ship with a maximum of 230 guests, offers a perfect blend of adventure and comfort for explorers seeking to uncover the world's wonders. As an international vessel conducting cruises in both English and German, it brings over 30 years of expertise from a market leader in German-speaking countries to every journey. Each expedition is a masterpiece, passionately crafted to reveal far-flung worlds--be it icy realms, tropical paradises, wildlife havens, or cultural gems--making every voyage a unique discovery aboard this exceptional ship. Features of all cabins and suites An ocean view with even more: exclusively outside cabins and suites, almost all with balconies or French balconies Spaciously designed - enjoy a relaxing stay in rooms from 21 m<sup>2</sup>/226 ft<sup>2</sup> up to 71 m<sup>2</sup>/764 ft<sup>2</sup> in size Exceptionally equipped - for example, with binoculars, Nordic Walking poles, air conditioning, coffee machine and mini bar (free of charge) and 24-hour cabin service Separable beds Rain shower and heated wall in bathroom (e.g. for towels and wet parkas) Extensive infotainment with live broadcast and recordings of expert presentations, forwardview camera, navigation chart, films and much more Restaurants Aboard the HANSEATIC inspiration, a

new kind of freedom blends adventure and pleasure with a culinary journey across three exceptional restaurants. The spacious HANSEATIC Restaurant offers flexible mealtimes and a free choice of seating, serving a daily-changing menu of global flavors inspired by local specialties, paired with fine wines and supported by attentive 24-hour cabin service. At the Lido Restaurant, guests can savor breakfast under the open sky or enjoy a perfectly grilled steak from the outdoor barbecue, complete with panoramic views and an open show kitchen. The specialty restaurant Nikkei fuses fine Japanese creations with modern Peruvian cuisine, delivering a unique dining experience that elevates exploration to new heights--all while bars in the Observation Lounge and HanseAtrium offer favorite drinks against stunning backdrops, from Nordic fjords to icy Antarctic vistas. Fitness and Wellness On the HANSEATIC inspiration, an extraordinary time out awaits after thrilling Zodiac rides, challenging hikes, or Arctic adventures. Unwind in the Ocean Spa, where a Finnish sauna with stunning ocean views, a gentle steam sauna, an ice fountain, and a relaxation room rejuvenate your senses, complemented by professional massages, cosmetic treatments, and eco-friendly products made from natural, vegan ingredients. Stay active in the 100 m<sup>2</sup> fitness room or separate course room--both with ocean vistas--guided by a fitness coach offering personalized advice and a variety of courses, either indoors or on deck. The pool area, with its flexible canopy, invites relaxation year-round, featuring water loungers, a whirlpool, and a bar, ensuring a perfect blend of indulgence and revitalization against the backdrop of the open sea. Knowledge Shore excursions and Zodiac rides come alive

The Small Cruise Ship Collection  
[www.small-cruise-ships.com](http://www.small-cruise-ships.com)

**01432 507 280** (within UK)

[info@small-cruise-ships.com](mailto:info@small-cruise-ships.com) | [small-cruise-ships.com](http://small-cruise-ships.com)





## The Small Cruise Ship Collection

[www.small-cruise-ships.com](http://www.small-cruise-ships.com)

[small-cruise-ships.com](http://small-cruise-ships.com)

[info@small-cruise-ships.com](mailto:info@small-cruise-ships.com)

with deeper context through fascinating presentations in the HanseAtrium, a high-tech lounge where experts share daily precaps and recaps, doubling as an atmospheric evening bar for films and discussions. The Ocean Academy enhances the journey with a Study Wall and interactive poster of scientific insights, microscopes for exploring hidden wonders alongside experts, and Study Seats--with swivel touchscreens--for personal dives into science. Supported by travel diaries and destination videos, this immersive experience broadens horizons with cutting-edge tools and



expertise.

The Small Cruise  
Ship Collection  
[www.small-cruise-ships.com](http://www.small-cruise-ships.com)

**01432 507 280** (within UK)

[info@small-cruise-ships.com](mailto:info@small-cruise-ships.com) | [small-cruise-ships.com](http://small-cruise-ships.com)

# The Small Cruise Ship Collection

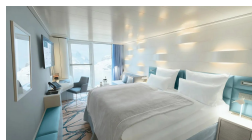
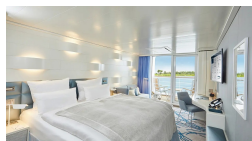
[www.small-cruise-ships.com](http://www.small-cruise-ships.com)

[small-cruise-ships.com](http://small-cruise-ships.com)

[info@small-cruise-ships.com](mailto:info@small-cruise-ships.com)

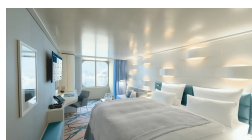
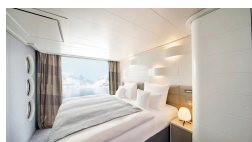
## INSIDE YOUR SHIP

Balcony Cabin. From



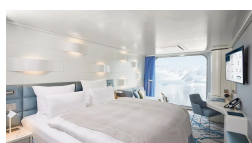
French Balcony Cabin. From

Junior Suite. From



Outside Cabin. From

Panoramic Cabin. From





## The Small Cruise Ship Collection

[www.small-cruise-ships.com](http://www.small-cruise-ships.com)

[small-cruise-ships.com](http://small-cruise-ships.com)

[info@small-cruise-ships.com](mailto:info@small-cruise-ships.com)

## PRICING

13-Jun-2027 to 26-Jun-2027

|                            |               |
|----------------------------|---------------|
| Outside Cabin. From        | £7821 GBP pp  |
| Panoramic Cabin. From      | £7821 GBP pp  |
| French Balcony Cabin. From | £9822 GBP pp  |
| Balcony Cabin. From        | £10675 GBP pp |
| Junior Suite. From         | £14825 GBP pp |