

# The Small Cruise Ship Collection

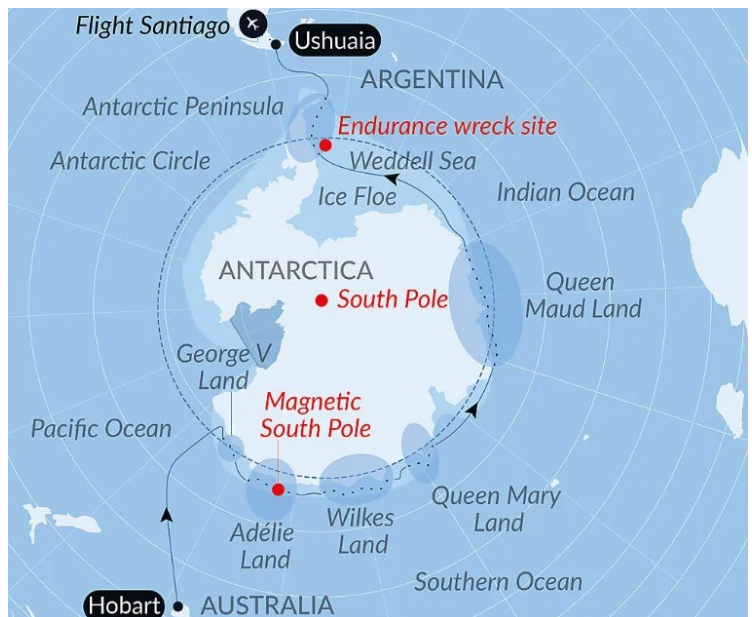
www.small-cruise-ships.com

small-cruise-ships.com

info@small-cruise-ships.com

## UNEXPLORED EASTERN ANTARCTICA BETWEEN TWO CONTINENTS LUXURY CRUISE

There where the ocean meets the ice, where the horizon is decked out in shades of blue and white, the routes of great polar adventure open up. Ross, Scott, Mawson, Shackleton ... these are the names who wrote the history of the southern seas. Aboard *Le Commandant Charcot*, a ship designed for polar exploration, set off to make your own journey in their wake, between Australia and the far south of the American continent. The cliffs of Adelie Land, the glaciers of Wilkes Land, and the immaculate shores of Queen Mary Land and Queen Maud Land form a theatre of ice in which time stands still. Further on, Ross Sea and Weddell Sea reveal their majestic ice shelves, captivating tabular icebergs and floating ice floes, the legendary territory of the *Endurance* wreck, where Shackleton's story remains forever engraved in the ice. As a privileged witness, keep a watchful eye and observe the whales, orcas, seals, petrels and penguins, the majestic inhabitants of these remote areas where nature's reign is absolute. We are privileged guests in these extreme lands, where we are at the mercy of the weather and ice conditions. Our commitment to respecting this environment imposes certain rules of conduct. Our navigation will be determined by the type of ice we encounter; as the coastal ice must be preserved, we will take this factor into account each day when charting our itineraries. The sailing programme, outings, activities and observation of fauna are subject to weather and ice conditions. These experiences are unique and vary for each departure. The Captain and the Expedition Leader will make every effort to ensure that your experience is as rich as possible, while complying with applicable safety rules and IAATO regulations.



### ITINERARY

Day 1 - Hobart, Tasmania

**Hobart** occupies a wonderful location at the mouth of the Derwent River, overseen by majestic **Mt Wellington** and surrounded by natural bushland. The **Tasmanian capital** is Australia's second-oldest city, after Sydney, and the picturesque waterfront is bordered by **19th-century warehouses and colonial mansions**. Salamanca Place is packed with shops, galleries and restaurants and the fascinating Museum of Old and New Art (MONA) is a short ferry ride from the quay. Hobart is within easy reach of some of **Tasmania**'s best-known

The Small Cruise Ship Collection  
www.small-cruise-ships.com

01432 507 280 (within UK)

info@small-cruise-ships.com | small-cruise-ships.com



## The Small Cruise Ship Collection

[www.small-cruise-ships.com](http://www.small-cruise-ships.com)

[small-cruise-ships.com](http://small-cruise-ships.com)

[info@small-cruise-ships.com](mailto:info@small-cruise-ships.com)

destinations, from historic **Port Arthur** and the rugged Tasman Peninsula to Bruny Island, the Huon and Derwent Valleys and Mount Field National Park.

### Days 2 - 5 At sea aboard Le Commandant Charcot

Spend exceptional moments sailing aboard Le Commandant Charcot, the world's first luxury polar exploration vessel and the first PC2-class polar cruise ship capable of sailing into the very heart of the ice, on seas and oceans which the frozen conditions render inaccessible to ordinary ships. Le Commandant Charcot is fitted with oceanographic and scientific equipment selected by a committee of experts. Take advantage of the on-board lectures and opportunities for discussion with these specialists to learn more about the poles. Participate in furthering scientific research with PONANT and let us discover together what these fascinating destinations have yet to reveal to us.

### Day 6 - Commonwealth Bay

Welcome to the country of blizzards, these violent winds filled with snow flakes. Plunge into the history of the Australian polar expeditions and discover Commonwealth Bay, by slipping into the shoes of the legendary Douglas Mawson, who created his main base in 1911 in Cape Denison. Marking the border with Marie Byrd Land, the Transantarctic Mountains, extending the Andes, offer this Eden of ice some mountainous landscapes.

**Adelie Land** covers around 400,000 km<sup>2</sup> (around 250,000 square miles) of the White Continent between the 136th and 142nd meridians longitude East. These lands claimed by France in Antarctica are home, on Petrel Island, to **Dumont-d 'Urville station**, which is named after the eponymous French explorer who investigated the region in 1840. Here, the few resident scientists share the Antarctic

desert with Adelie penguins, seals and orcas, as well as emperor penguins during the winter. The extreme climate of this land at the edge of the world, characterised by its very low temperatures and its violent winds or blizzards, make it difficult to access its shores, which are protected by thick ice floe. Be among the rare people to discover this unique place where you will be captivated by the polar silence and the ice reflecting the rays of the sun as you experience the Southern Continent's powerful fragility.

### Day 6 - George V Land

Fall under the spell of the immaculate shores of George V Land, a remote region on the eastern coast of Antarctica. Between monumental ice shelves and infinite white expanses, tabular icebergs slowly drift, revealing their turquoise- and azure-tinged walls. Along the shores of this isolated region, the marine life will reveal itself in all its splendour: orcas, rorquals and humpback whales wander these enchanted waters, offering exceptional encounters in this preserved polar setting.

### Day 7 - Adélie Land

**Adelie Land** covers around 400,000 km<sup>2</sup> (around 250,000 square miles) of the White Continent between the 136th and 142nd meridians longitude East. These lands claimed by France in Antarctica are home, on Petrel Island, to **Dumont-d 'Urville station**, which is named after the eponymous French explorer who investigated the region in 1840. Here, the few resident scientists share the Antarctic desert with Adelie penguins, seals and orcas, as well as emperor penguins during the winter. The extreme climate of this land at the edge of the world, characterised by its very low temperatures and its violent winds or blizzards, make it difficult to access its shores, which are protected by thick ice floe. Be

The Small Cruise Ship Collection

[www.small-cruise-ships.com](http://www.small-cruise-ships.com)

01432 507 280 (within UK)

[info@small-cruise-ships.com](mailto:info@small-cruise-ships.com) | [small-cruise-ships.com](http://small-cruise-ships.com)



## The Small Cruise Ship Collection

[www.small-cruise-ships.com](http://www.small-cruise-ships.com)

[small-cruise-ships.com](http://small-cruise-ships.com)

[info@small-cruise-ships.com](mailto:info@small-cruise-ships.com)

among the rare people to discover this unique place where you will be captivated by the polar silence and the ice reflecting the rays of the sun as you experience the Southern Continent's powerful fragility.

### Day 7 - Wilkes Land

Aboard Le Commandant Charcot, follow in the footsteps of the **American explorer Charles Wilkes**, during his USS Vincennes expedition undertaken between 1838 and 1842. A veritable mine of information for scientists, **this isolated land** where only moss and lichen have managed to adapt and to take hold, forming the tundra -, promises a unique moment. Under an immaculate white coat, a secret world comes to life: from the **icy mountains** defying the sky to the **vast glaciers**, some of which stretch all the way to the Southern Ocean, and the **icebergs** drifting silently through frozen waters. These landscapes, unlike any other, are sure to captivate you.

### Day 8 - Magnetic South Pole

The convergence point for the field lines of the Earth's magnetic field, the **Magnetic South Pole** attracts the magnetic needle of the compass. While the Geographic South Pole is the Earth's southernmost fixed point, marking the intersection of the Globe's rotation axis with the Earth's surface, the Magnetic South Pole moves over time. In fact, it is linked to the Earth's magnetic field which originates in the Earth's outer core, which is made up of molten metal and is subject to convection movements. It was during the French Dumont d'Urville expedition to Antarctica, aboard the famous ships L'Astrolabe and La Zeele, that the hydrographer and engineer Vincendon-Dumoulin made the first calculation of the magnetic inclination that enabled him to localise this pole in 1838. Set

off in search of the Magnetic South Pole, try to get closer to it and, if luck allows it, attempt to reach it!

### Day 9 - At sea aboard Le Commandant Charcot

Spend exceptional moments sailing aboard Le Commandant Charcot, the world's first luxury polar exploration vessel and the first PC2-class polar cruise ship capable of sailing into the very heart of the ice, on seas and oceans which the frozen conditions render inaccessible to ordinary ships. Le Commandant Charcot is fitted with oceanographic and scientific equipment selected by a committee of experts. Take advantage of the on-board lectures and opportunities for discussion with these specialists to learn more about the poles. Participate in furthering scientific research with PONANT and let us discover together what these fascinating destinations have yet to reveal to us.

### Days 10 - 12 Wilkes Land

Aboard Le Commandant Charcot, follow in the footsteps of the **American explorer Charles Wilkes**, during his USS Vincennes expedition undertaken between 1838 and 1842. A veritable mine of information for scientists, **this isolated land** where only moss and lichen have managed to adapt and to take hold, forming the tundra -, promises a unique moment. Under an immaculate white coat, a secret world comes to life: from the **icy mountains** defying the sky to the **vast glaciers**, some of which stretch all the way to the Southern Ocean, and the **icebergs** drifting silently through frozen waters. These landscapes, unlike any other, are sure to captivate you.

### Day 13 - Sailing along Shackleton Ice Shelf

During this unique navigation, suspended in time, admire the fantastic spectacle of the Shackleton Ice Shelf. In the luxurious

The Small Cruise Ship Collection  
[www.small-cruise-ships.com](http://www.small-cruise-ships.com)

01432 507 280 (within UK)

[info@small-cruise-ships.com](mailto:info@small-cruise-ships.com) | [small-cruise-ships.com](http://small-cruise-ships.com)



## The Small Cruise Ship Collection

[www.small-cruise-ships.com](http://www.small-cruise-ships.com)

[small-cruise-ships.com](http://small-cruise-ships.com)

[info@small-cruise-ships.com](mailto:info@small-cruise-ships.com)

comfort of Le Commandant Charcot, specially designed for polar exploration, the **\*\*vast icy expanses of the Antarctic\*\*** will unfold before your astonished eyes. The air here is imbued with solemn serenity, only broken by the distant cracking of icebergs drifting along the shelf. You will perhaps have the chance to observe the many mammals, such as the **\*\*whales\*\***, **\*\*seals and penguins\*\***, which prosper in these icy waters.

### Day 14 - Wilkes Land

Aboard Le Commandant Charcot, follow in the footsteps of the **\*\*American explorer Charles Wilkes\*\***, during his USS Vincennes expedition undertaken between 1838 and 1842. A veritable mine of information for scientists, **\*\*this isolated land -\*\*** where only moss and lichen have managed to adapt and to take hold, forming the tundra -, promises a unique moment. Under an immaculate white coat, a secret world comes to life: from the **\*\*icy mountains\*\*** defying the sky to the **\*\*vast glaciers,\*\*** some of which stretch all the way to the Southern Ocean, and the **\*\*icebergs\*\*** drifting silently through frozen waters. These landscapes, unlike any other, are sure to captivate you.

### Days 15 - 17 At sea aboard Le Commandant Charcot

Spend exceptional moments sailing aboard Le Commandant Charcot, the world's first luxury polar exploration vessel and the first PC2-class polar cruise ship capable of sailing into the very heart of the ice, on seas and oceans which the frozen conditions render inaccessible to ordinary ships. Le Commandant Charcot is fitted with oceanographic and scientific equipment selected by a committee of experts. Take advantage of the on-board lectures and opportunities for discussion with these specialists to learn more about the poles. Participate in furthering scientific research with PONANT and let us discover together what these

fascinating destinations have yet to reveal to us.

### Day 18 - Queen Maud Land

Dive into the heart of Queen Maud Land, a huge expanse where ice and sea merge endlessly. Impressive glaciers move towards the ocean, accompanied by turquoise- and azure-tinged tabular icebergs. In these waters, seals, orcas and penguin colonies roam freely, offering striking scenes of polar life. Explored by Roald Amundsen and Hjalmar Riiser-Larsen, this region remains remote and intact, with each panorama bearing witness to the raw and preserved power of Antarctica.

### Day 19 - At sea aboard Le Commandant Charcot

Spend exceptional moments sailing aboard Le Commandant Charcot, the world's first luxury polar exploration vessel and the first PC2-class polar cruise ship capable of sailing into the very heart of the ice, on seas and oceans which the frozen conditions render inaccessible to ordinary ships. Le Commandant Charcot is fitted with oceanographic and scientific equipment selected by a committee of experts. Take advantage of the on-board lectures and opportunities for discussion with these specialists to learn more about the poles. Participate in furthering scientific research with PONANT and let us discover together what these fascinating destinations have yet to reveal to us.

### Day 20 - Queen Maud Land

Dive into the heart of Queen Maud Land, a huge expanse where ice and sea merge endlessly. Impressive glaciers move towards the ocean, accompanied by turquoise- and azure-tinged tabular icebergs. In these waters, seals, orcas and penguin colonies roam freely, offering striking scenes of polar life. Explored by Roald Amundsen and Hjalmar Riiser-Larsen, this region remains remote and intact, with each panorama bearing witness to the

The Small Cruise Ship Collection  
[www.small-cruise-ships.com](http://www.small-cruise-ships.com)

01432 507 280 (within UK)

[info@small-cruise-ships.com](mailto:info@small-cruise-ships.com) | [small-cruise-ships.com](http://small-cruise-ships.com)



## The Small Cruise Ship Collection

[www.small-cruise-ships.com](http://www.small-cruise-ships.com)

[small-cruise-ships.com](http://small-cruise-ships.com)

[info@small-cruise-ships.com](mailto:info@small-cruise-ships.com)

raw and preserved power of Antarctica.

### Day 21 - At sea aboard Le Commandant Charcot

Spend exceptional moments sailing aboard Le Commandant Charcot, the world's first luxury polar exploration vessel and the first PC2-class polar cruise ship capable of sailing into the very heart of the ice, on seas and oceans which the frozen conditions render inaccessible to ordinary ships. Le Commandant Charcot is fitted with oceanographic and scientific equipment selected by a committee of experts. Take advantage of the on-board lectures and opportunities for discussion with these specialists to learn more about the poles. Participate in furthering scientific research with PONANT and let us discover together what these fascinating destinations have yet to reveal to us.

### Days 22 - 24 Queen Maud Land

Dive into the heart of Queen Maud Land, a huge expanse where ice and sea merge endlessly. Impressive glaciers move towards the ocean, accompanied by turquoise- and azure-tinged tabular icebergs. In these waters, seals, orcas and penguin colonies roam freely, offering striking scenes of polar life. Explored by Roald Amundsen and Hjalmar Riiser-Larsen, this region remains remote and intact, with each panorama bearing witness to the raw and preserved power of Antarctica.

### Days 25 - 26 Antarctic Peninsula

Succumb to the magic of a place unlike any other. To this day, the mythical **Antarctic Peninsula** still holds real fascination and promises its visitors unforgettable moments. Throughout your adventure in this icy realm, you will find yourself in the heart of a **spectacular decor** in subtle shades of blue and white, surrounded by **exceptional wildlife**. Penguins, humpback whales, seals and giant petrels are at home here, as

are elephant seals, fur seals, Antarctic minke whales, and orcas. Depending on which sites you will be lucky enough to visit, you may get the chance to observe them and share with them the beauty of these extreme parts.

Each day, based on ice conditions, the Captain and the Expedition Leader will suggest **zodiac outings or landings** to discover the infinite riches of the Antarctic Peninsula. Glaciers, ice floe, tabletop icebergs, mountain peaks that plunge straight into the sea, volcanic beaches, research stations, enchanting bays, and vestiges of the whaling industry: these are the faces of the Antarctic that will likely reveal themselves to you, in a hushed and surreal atmosphere. You will sail in the wake of Jean-Baptiste Charcot, Adrien de Gerlache and Sir Ernest Shackleton, great Antarctic explorers who, from the 19th century, set out to conquer these remote and uninhabited lands.

### Day 27 - Endurance wreck site

In 1915, Endurance, the famous three-masted schooner that transported Ernest Shackleton and his 27-man crew to the Antarctic, became trapped in pack ice and sank into the depths of the Weddell Sea. For 107 years, these waters nicknamed by Shackleton as "the worst sea in the world" kept the wreck's location secret. This symbol of polar adventure was rediscovered in 2022, lying over 3,000 metres (almost 10,000 feet) deep. Aboard Le Commandant Charcot, follow the pack ice in the heart of the floe and glide over the seabed on which this legend rests, to relive the great era of the explorers.

### Day 28 - Antarctic Peninsula

Succumb to the magic of a place unlike any other. To this day, the mythical **Antarctic Peninsula** still holds real fascination

The Small Cruise Ship Collection  
[www.small-cruise-ships.com](http://www.small-cruise-ships.com)

01432 507 280 (within UK)

[info@small-cruise-ships.com](mailto:info@small-cruise-ships.com) | [small-cruise-ships.com](http://small-cruise-ships.com)



## The Small Cruise Ship Collection

[www.small-cruise-ships.com](http://www.small-cruise-ships.com)

[small-cruise-ships.com](http://small-cruise-ships.com)

[info@small-cruise-ships.com](mailto:info@small-cruise-ships.com)

and promises its visitors unforgettable moments. Throughout your adventure in this icy realm, you will find yourself in the heart of a **\*\*spectacular decor\*\*** in subtle shades of blue and white, surrounded by **\*\*exceptional wildlife\*\***. Penguins, humpback whales, seals and giant petrels are at home here, as are elephant seals, fur seals, Antarctic minke whales, and orcas. Depending on which sites you will be lucky enough to visit, you may get the chance to observe them and share with them the beauty of these extreme parts.

Each day, based on ice conditions, the Captain and the Expedition Leader will suggest **\*\*zodiac outings or landings\*\*** to discover the infinite riches of the Antarctic Peninsula. Glaciers, ice floe, tabletop icebergs, mountain peaks that plunge straight into the sea, volcanic beaches, research stations, enchanting bays, and vestiges of the whaling industry: these are the faces of the Antarctic that will likely reveal themselves to you, in a hushed and surreal atmosphere. You will sail in the wake of Jean-Baptiste Charcot, Adrien de Gerlache and Sir Ernest Shackleton, great Antarctic explorers who, from the 19th century, set out to conquer these remote and uninhabited lands.

### Days 29 - 30 At sea aboard Le Commandant Charcot

Spend exceptional moments sailing aboard Le Commandant Charcot, the world's first luxury polar exploration vessel and the first PC2-class polar cruise ship capable of sailing into the very heart of the ice, on seas and oceans which the frozen conditions render inaccessible to ordinary ships. Le Commandant Charcot is fitted with oceanographic and scientific equipment selected by a committee of experts. Take advantage of the on-board lectures and opportunities for discussion with these specialists

to learn more about the poles. Participate in furthering scientific research with PONANT and let us discover together what these fascinating destinations have yet to reveal to us.

### Day 31 - Ushuaia

Capital of Argentina's **\*\*Tierra del Fuego\*\*** province, Ushuaia is considered the gateway to the White Continent and the South Pole. Nicknamed **\*\*"El fin del mundo\*\*"** by the Argentinian people, this city at the end of the world nestles in the shelter of mountains surrounded by fertile plains that the wildlife seem to have chosen as the ultimate sanctuary. With its exceptional site, where the Andes plunge straight into the sea, Ushuaia is one of the most fascinating places on earth, its very name evocative of journeys to the unlikely and the inaccessible...

### Please note:

Itineraries are subject to change.

The Small Cruise Ship Collection

[www.small-cruise-ships.com](http://www.small-cruise-ships.com)

01432 507 280 (within UK)

[info@small-cruise-ships.com](mailto:info@small-cruise-ships.com) | [small-cruise-ships.com](http://small-cruise-ships.com)

# The Small Cruise Ship Collection

www.small-cruise-ships.com

small-cruise-ships.com

info@small-cruise-ships.com

## YOUR SHIP: LE COMMANDANT-CHARCOT

**YOUR SHIP:** Le Commandant-Charcot

**VESSEL TYPE:**

**LENGTH:**

**PASSENGER CAPACITY:**

**BUILT/REFURBISHED:**

With its hybrid propulsion combining liquefied natural gas (LNG) and electric generators, Le Commandant-Charcot has been designed to minimise the environmental impact of travel to the furthest latitudes. The decoration of the ship, designed by two internationally renowned design and architecture firms - the studio of Jean-Philippe Nuel and Wilmotte & Associates - is designed to be in harmony with the environment. The approach is contemporary with the desire to create a warm and elegant setting; stone, wood and leather recall the natural environment in which the ship is sailing. Equipped with just 135 staterooms including 31 suites with balconies and outside views, Le Commandant-Charcot welcomes you in an intimate and refined atmosphere. Outstanding gastronomy in the two restaurants, relaxation in the indoor pool surrounded by its winter garden, relaxation in the well-being area with sauna and Snow Room... Like on a private yacht, each of our guests is unique. **PUBLIC AREAS** Le Commandant-Charcot has many common areas that are designed and equipped to meet all of your needs while preserving the intimacy of each passenger. A 177 m<sup>2</sup> reception area includes: A reception/concierge desk, An expeditions desk, The ship's administrative services, The sales office, manned by

our Hospitality & Travel Manager officer, Our boutique which sells clothing, jewellery, beauty products, postcards and various accessories, The image & photo desk. The different lounges include a 302 m<sup>2</sup> main lounge including a 28 m<sup>2</sup> cigar lounge, a tea corner and a bar, with live music on selected evenings, A 400 m<sup>2</sup> panoramic bar and lounge, An open-air Bar. The recreation spaces Fitness & Beauty Corner: Fitness room: Elliptic, running machines, bicycles... Beauty Corner: Hairdresser, Massage rooms, Sauna, Snow Room, Nail Shop. Pool area: Indoor Pool and winter garden - Outdoor Pool Theatre: Capacity: 270-276 - Main show room for conferences and live entertainment on selected evenings - State-of-the-art audio and video technology. Leisure area: Public areas - Library - Medical centre. 16



Zodiacs on board.

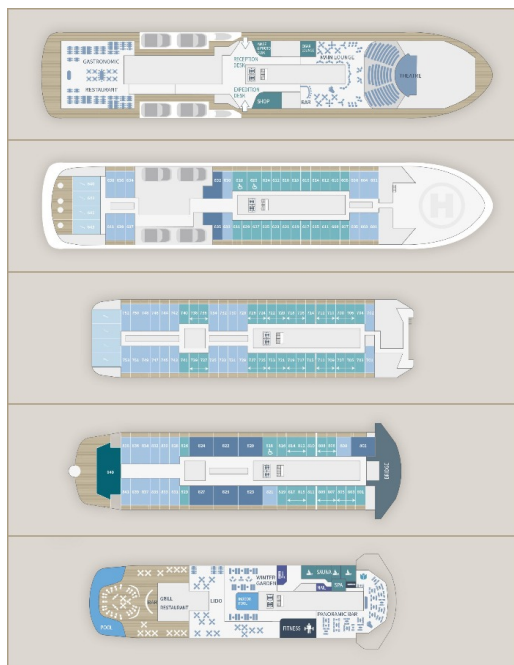
# The Small Cruise Ship Collection

www.small-cruise-ships.com

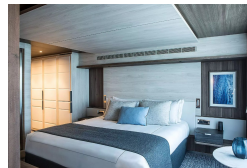
small-cruise-ships.com

info@small-cruise-ships.com

## INSIDE YOUR SHIP



Deluxe Suite Deck 6



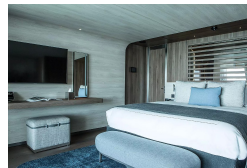
Deluxe Suite Deck 7



Deluxe Suite Deck 8



Duplex Suite



Grand Prestige Suite

Owner's Suite

Prestige Stateroom Deck 6

Prestige Stateroom Deck 7

Prestige Stateroom Deck 8

Prestige Suite Deck 7

Prestige Suite Deck 8

Privilege Suite Deck 8



# The Small Cruise Ship Collection

[www.small-cruise-ships.com](http://www.small-cruise-ships.com)



[small-cruise-ships.com](http://small-cruise-ships.com)

[info@small-cruise-ships.com](mailto:info@small-cruise-ships.com)

## PRICING

11-Feb-2028 to 12-Mar-2028

Privilege Suite Deck 8	£104555 GBP pp
Deluxe Suite Deck 6	£59155 GBP pp
Prestige Suite Deck 8	£102925 GBP pp
Duplex Suite	£129185 GBP pp
Deluxe Suite Deck 8	£64075 GBP pp
Prestige Suite Deck 7	£101275 GBP pp
Prestige Stateroom Deck 8	£57515 GBP pp
Prestige Stateroom Deck 7	£56415 GBP pp
Grand Prestige Suite	£93625 GBP pp
Owner's Suite	£153805 GBP pp
Deluxe Suite Deck 7	£61895 GBP pp
Prestige Stateroom Deck 6	£55325 GBP pp