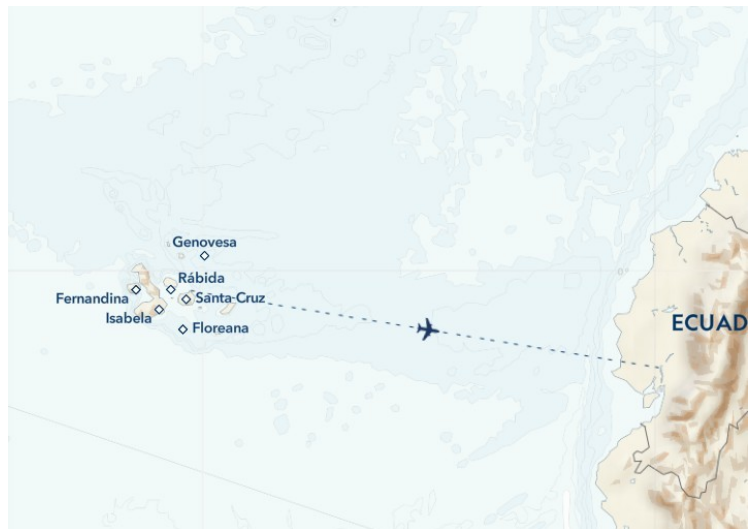




ULTIMATE GALAPAGOS SMALL SHIP CRUISE

Experience our most encompassing Galapagos expedition--an extended voyage that reveals the full breadth of this legendary archipelago. Sailing aboard the National Geographic Endeavour II, you'll enjoy 13 days of exploration in the company of local experts and a veteran expedition team. Walk among wildlife unfazed by your presence, snorkel crystal-clear waters teeming with marine life and witness the ecosystems that inspired Darwin's theory of evolution. With more time in the islands than any other itinerary, this journey offers the deepest immersion into one of Earth's most biodiverse environments--where every day brings new discoveries above and below the water.



ITINERARY

Day 1 Quito or Guayaquil, Ecuador

Arrive in Ecuador, either in Quito, Ecuador's capital city in the Andes, or in the coastal city of Guayaquil, for an included transfer to your convenient hotel for an overnight stay. Both cities are well-served by international carriers, and Galapagos flights start and end in Quito with a stop in Guayaquil. Guests in Guayaquil stay at the locally owned Hotel Oro Verde and have the choice of several hotels in Quito, including a convenient airport hotel.

Note that Quito sits at a 9,350 ft elevation. It is an alternative option to Guayaquil, at no additional cost, and recommended if you opt for a pre-voyage extension to Mashpi Reserve in the tropical Andes outside Quito, or take just one extra day on the



See Quito Pre-Voyage Extension. You can also choose to reserve additional hotel nights and tours in Quito or Guayaquil.

Day 2 Quito or Guayaquil / Galápagos Islands / Embark Ship

In the morning, if you're joining the recommended flight to the Galapagos Islands, transfers to the airport and luggage assistance will be provided. Upon arrival, embark the ship.

Day 3-15 Galápagos Islands

This extended exploration offers the rare opportunity to visit all of the remarkable islands listed below. Each day brings new discoveries--from ancient volcanic landscapes and untamed wilderness to wildlife-rich shores teeming with endemic species--providing the optimal balance of everything that makes the Galapagos extraordinary. All ship itineraries are subject to Galapagos National Park regulations.

Please note that Day 9 will mark a transition, as some guests conclude their voyage while others embark to begin their adventure. Some staff may also rotate, bringing fresh energy and expertise for the journey ahead. During this turnaround, you'll explore a new site on shore with a naturalist.

****North Seymour:**** Follow coastal trails past playful Galapagos sea lions on this wildlife-rich central island. Continue inland through a silvery forest of endemic palo santo trees, where frigatebirds nest, blue-footed boobies dance and where you may also encounter prehistoric-looking land iguanas feeding on cactus.

****Rabida:**** Step ashore on striking red-sand beaches and snorkel in the shallows alongside Galapagos sea lions and vibrant tropical fish. Later, enjoy a nature or photo walk to spot

hawks, other terrestrial birds, and--at times--flamingos in a small saltwater lagoon.

****Isabela:**** Raise a toast as you cross the Equator at Volcan Ecuador, the northernmost of Isabela's six great shield volcanoes. Watch for whales, dolphins, sea turtles and the elusive ocean sunfish along the way. Over two days, explore these dramatically eroded volcanic shores in the footsteps of Darwin and Melville, encountering abundant wildlife and remarkable geology. Zodiac cruise along the coast in search of Galapagos penguins and fur seals, and snorkel among green sea turtles and shimmering schools of endemic fish.

****Fernandina:**** One of the most active oceanic volcanoes in the world, Fernandina is the youngest and most untamed island in Galapagos--and home to the strange flightless cormorant, Galapagos penguins and the largest marine iguana colonies in the archipelago. Hike across recent black lava flows alongside scampering Sally Lightfoot crabs and sea lions playing in tidepools.

****Española:**** Located in the far southeastern reaches of the archipelago, Española is home to an extraordinary array of wildlife, including red and black marine iguanas, swallow-tailed gulls, Nazca boobies and endemic mockingbirds and lava lizards. Seasonally, Punta Suarez also hosts the world's only breeding population of waved albatrosses. Snorkel and kayak alongside playful sea lions and colorful fish at Gardner Bay, then set out on an afternoon walk at Punta Suarez to encounter more of the island's remarkable species.

****Floreana:**** Follow a trail past a pink-tinted lagoon



frequented by flamingos. Snorkel among sea lions and abundant fish or cruise along Champion Islet by Zodiac. Visit the famous wooden barrel at Post Office Bay and learn about its unusual postal system.

****Santa Cruz:**** Visit Puerto Ayora, the largest town and headquarters of both the Galapagos National Park and Charles Darwin Research Station. See the monument to Lonesome George and tour the giant tortoise breeding corrals. Witness giant tortoises roaming in the wild in the lush, green highlands.

****Bartolome:**** Hike to the summit of a 300-foot volcanic cone for sweeping panoramic views. Later, snorkel or join a glass-bottom boat excursion around the base of iconic Pinnacle Rock, where you may spot sea lions, small reef sharks, and even Galapagos penguins.

****Santiago:**** Explore tide pools and look for fur seals sheltered in quiet grottos of black basalt. Swim, snorkel, kayak and paddleboard along Santiago's spectacular coast, and explore an enchanting coastal forest where Charles Darwin once walked.

****Genovesa:**** Sail across the Equator to the remote northern realm of the Galapagos into this flooded caldera, home to over one million seabirds. Visit Prince Philip's Steps at the top of the island. Highlights along the trail are many, from Nazca, red-footed and blue-footed boobies and frigates, to gulls, owls, fur seals, hammerhead sharks, turtles and manta rays.

****San Cristobal:**** Search for red-footed boobies and the endemic mockingbird and lava lizard--found only on this

easternmost island. Walk along the powdery white sand at a gorgeous beach fronted by iconic Kicker Rock. Explore Baquerizo Moreno, where sea lions thrive in the middle of town.

Day 16 Galapagos Islands / Disembark Ship / Guayaquil or Quito

Disembark this morning and join the recommended flight to Guayaquil or Quito; transfers to the airport and luggage assistance will be provided. Unwind at Hotel Oro Verde in Guayaquil or pick from several options in Quito, including a convenient airport hotel. The afternoon and evening are at your leisure. You may be able to take advantage of overnight flights home. Ask your expedition specialist about Peru, Quito and other post-voyage options. Upon arrival in Guayaquil, many guests continue on a flight to Lima, Peru, for Exploring Galapagos + Peru's Land of the Inca.

Day 17 Guayaquil or Quito

After breakfast, transfer to the airport and board flights home, unless you have arranged for additional nights or an extension.

****Departure Time:**** Anytime on day 17, or after 7:00 p.m. local time on day 16.

****Departure City:**** Guayaquil or Quito, Ecuador

Please note:

Itineraries are subject to change.



The Small Cruise
Ship Collection

www.small-cruise-ships.com



small-cruise-ships.com

info@small-cruise-ships.com

YOUR SHIP: NATIONAL GEOGRAPHIC ENDEAVOUR II

| | |
|----------------------------|---|
| YOUR SHIP: | National Geographic Endeavour II |
| VESSEL TYPE: | Expedition Ship |
| LENGTH: | 73 metres |
| PASSENGER CAPACITY: | 96 guests (in 53 outside cabins) |
| BUILT/REFURBISHED: | 2005; Refurbished |



National Geographic Endeavour II is a purpose-built expedition ship that first sailed in 2005. After undergoing extensive renovation this year, she will redeploy to Galápagos. She is exceptionally nimble and maneuverable, with great viewing from all public spaces, large windows in cabins and suites, state-of-the-art tools for exploration, and a fast, seamless twin Zodiac loading platform. Public Areas : Ship is fully air-conditioned. Covered deck with chairs and tables; doctor's office; fitness centre; LEXspa; global gallery; library; lounge with full-service bar and facilities for viewing and presentations; and sun deck. Our Ecuadorian captain welcomes guests to the bridge in accordance with our 'open bridge' policy. Cabins : All cabins face outside with windows. Each has private facilities and climate controls. Expedition Equipment : Kayaks, glass-bottom Zodiac, snorkeling gear, underwater video camera, video microscope, wet suits, and Zodiac landing craft. Special Features : Guest internet access, laundry service, and wellness program. Ship's doctor and video chronicler are also on board.

The Small Cruise
Ship Collection

www.small-cruise-ships.com

01432 507 280 (within UK)

info@small-cruise-ships.com | small-cruise-ships.com



The Small Cruise Ship Collection

www.small-cruise-ships.com



small-cruise-ships.com

info@small-cruise-ships.com

INSIDE YOUR SHIP

Category 01



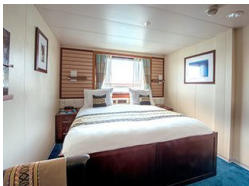
Category 02



Category 03



Category 04



Category AS

Category BS



The Small Cruise Ship Collection

www.small-cruise-ships.com



small-cruise-ships.com

info@small-cruise-ships.com

PRICING

08-Jan-2027 to 24-Jan-2027

| | |
|-------------|---------------|
| Category BS | £23881 GBP pp |
| Category CS | £25131 GBP pp |
| Category AS | £22167 GBP pp |
| Category 04 | £18417 GBP pp |
| Category 03 | £16540 GBP pp |
| Category 02 | £14838 GBP pp |
| Category 01 | £11872 GBP pp |

19-Feb-2027 to 07-Mar-2027

| | |
|-------------|---------------|
| Category CS | £21979 GBP pp |
| Category BS | £20911 GBP pp |
| Category 04 | £16201 GBP pp |
| Category AS | £19426 GBP pp |
| Category 03 | £14585 GBP pp |
| Category 02 | £13121 GBP pp |
| Category 01 | £10569 GBP pp |

22-Jan-2027 to 07-Feb-2027

| | |
|-------------|---------------|
| Category CS | £23463 GBP pp |
| Category BS | £22295 GBP pp |
| Category AS | £20695 GBP pp |
| Category 04 | £17193 GBP pp |
| Category 03 | £15443 GBP pp |
| Category 02 | £13853 GBP pp |
| Category 01 | £11083 GBP pp |

05-Mar-2027 to 21-Mar-2027

| | |
|-------------|---------------|
| Category BS | £24492 GBP pp |
| Category AS | £22795 GBP pp |
| Category CS | £25735 GBP pp |
| Category 04 | £19077 GBP pp |
| Category 03 | £17215 GBP pp |
| Category 02 | £15530 GBP pp |
| Category 01 | £12587 GBP pp |

05-Feb-2027 to 21-Feb-2027

| | |
|-------------|---------------|
| Category CS | £23198 GBP pp |
| Category BS | £22071 GBP pp |
| Category AS | £20503 GBP pp |
| Category 04 | £17100 GBP pp |
| Category 03 | £15395 GBP pp |
| Category 02 | £13848 GBP pp |
| Category 01 | £11155 GBP pp |



The Small Cruise Ship Collection

www.small-cruise-ships.com

01432 507 280 (within UK)

info@small-cruise-ships.com | small-cruise-ships.com



The Small Cruise Ship Collection

www.small-cruise-ships.com



small-cruise-ships.com

info@small-cruise-ships.com

PRICING

19-Mar-2027 to 04-Apr-2027

| | |
|-------------|---------------|
| Category CS | £25734 GBP pp |
| Category BS | £24492 GBP pp |
| Category AS | £22795 GBP pp |
| Category 04 | £19076 GBP pp |
| Category 03 | £17214 GBP pp |
| Category 02 | £15529 GBP pp |
| Category 01 | £12587 GBP pp |

30-Apr-2027 to 16-May-2027

| | |
|-------------|---------------|
| Category CS | £25252 GBP pp |
| Category BS | £24005 GBP pp |
| Category AS | £22321 GBP pp |
| Category 04 | £18615 GBP pp |
| Category 03 | £16753 GBP pp |
| Category 02 | £15070 GBP pp |
| Category 01 | £12140 GBP pp |

02-Apr-2027 to 18-Apr-2027

| | |
|-------------|---------------|
| Category BS | £23588 GBP pp |
| Category AS | £21934 GBP pp |
| Category CS | £24814 GBP pp |
| Category 04 | £18292 GBP pp |
| Category 02 | £14808 GBP pp |
| Category 01 | £11929 GBP pp |
| Category 03 | £16462 GBP pp |

14-May-2027 to 30-May-2027

| | |
|-------------|---------------|
| Category CS | £25462 GBP pp |
| Category BS | £24199 GBP pp |
| Category 01 | £12140 GBP pp |
| Category AS | £22484 GBP pp |
| Category 04 | £18712 GBP pp |
| Category 03 | £16826 GBP pp |
| Category 02 | £15119 GBP pp |

16-Apr-2027 to 02-May-2027

| | |
|-------------|---------------|
| Category CS | £27490 GBP pp |
| Category BS | £26163 GBP pp |
| Category AS | £24353 GBP pp |
| Category 04 | £20372 GBP pp |
| Category 03 | £18381 GBP pp |
| Category 02 | £16587 GBP pp |
| Category 01 | £13449 GBP pp |



www.small-cruise-ships.com

01432 507 280 (within UK)

info@small-cruise-ships.com | small-cruise-ships.com



The Small Cruise Ship Collection

www.small-cruise-ships.com



small-cruise-ships.com

info@small-cruise-ships.com

PRICING

28-May-2027 to 13-Jun-2027

| | |
|-------------|---------------|
| Category CS | £24857 GBP pp |
| Category 03 | £16461 GBP pp |
| Category 02 | £14800 GBP pp |
| Category 01 | £11902 GBP pp |
| Category BS | £23635 GBP pp |
| Category AS | £21967 GBP pp |
| Category 04 | £18294 GBP pp |

09-Jul-2027 to 25-Jul-2027

| | |
|-------------|---------------|
| Category CS | £28876 GBP pp |
| Category BS | £27472 GBP pp |
| Category 03 | £19268 GBP pp |
| Category 02 | £17365 GBP pp |
| Category AS | £25549 GBP pp |
| Category 01 | £14055 GBP pp |
| Category 04 | £21368 GBP pp |

11-Jun-2027 to 27-Jun-2027

| | |
|-------------|---------------|
| Category CS | £26492 GBP pp |
| Category BS | £25207 GBP pp |
| Category AS | £23456 GBP pp |
| Category 04 | £19585 GBP pp |
| Category 03 | £17650 GBP pp |
| Category 02 | £15898 GBP pp |
| Category 01 | £12846 GBP pp |

23-Jul-2027 to 08-Aug-2027

| | |
|-------------|---------------|
| Category CS | £28718 GBP pp |
| Category BS | £27321 GBP pp |
| Category 02 | £17270 GBP pp |
| Category AS | £25409 GBP pp |
| Category 01 | £13979 GBP pp |
| Category 04 | £21250 GBP pp |
| Category 03 | £19163 GBP pp |

25-Jun-2027 to 11-Jul-2027

| | |
|-------------|---------------|
| Category CS | £25393 GBP pp |
| Category BS | £24160 GBP pp |
| Category AS | £22475 GBP pp |
| Category 04 | £18782 GBP pp |
| Category 03 | £16932 GBP pp |
| Category 02 | £15255 GBP pp |
| Category 01 | £12337 GBP pp |



The Small Cruise Ship Collection

www.small-cruise-ships.com

01432 507 280 (within UK)

info@small-cruise-ships.com | small-cruise-ships.com



The Small Cruise Ship Collection

www.small-cruise-ships.com



small-cruise-ships.com

info@small-cruise-ships.com

PRICING

06-Aug-2027 to 22-Aug-2027

| | |
|-------------|---------------|
| Category CS | £23538 GBP pp |
| Category BS | £22368 GBP pp |
| Category AS | £20749 GBP pp |
| Category 01 | £11331 GBP pp |
| Category 04 | £17262 GBP pp |
| Category 03 | £15437 GBP pp |
| Category 02 | £13870 GBP pp |

15-Oct-2027 to 31-Oct-2027

| | |
|-------------|---------------|
| Category AS | £18069 GBP pp |
| Category 04 | £15046 GBP pp |
| Category 03 | £13397 GBP pp |
| Category CS | £20501 GBP pp |
| Category BS | £19498 GBP pp |
| Category 02 | £12050 GBP pp |
| Category 01 | £10031 GBP pp |

20-Aug-2027 to 05-Sep-2027

| | |
|-------------|---------------|
| Category CS | £22728 GBP pp |
| Category BS | £21608 GBP pp |
| Category 01 | £11122 GBP pp |
| Category AS | £20020 GBP pp |
| Category 04 | £16668 GBP pp |
| Category 03 | £14840 GBP pp |
| Category 02 | £13353 GBP pp |

29-Oct-2027 to 14-Nov-2027

| | |
|-------------|---------------|
| Category 04 | £15797 GBP pp |
| Category 03 | £14066 GBP pp |
| Category CS | £21525 GBP pp |
| Category BS | £20472 GBP pp |
| Category AS | £18971 GBP pp |
| Category 02 | £12652 GBP pp |
| Category 01 | £10532 GBP pp |

01-Oct-2027 to 17-Oct-2027

| | |
|-------------|---------------|
| Category CS | £21525 GBP pp |
| Category BS | £20472 GBP pp |
| Category AS | £18971 GBP pp |
| Category 02 | £12652 GBP pp |
| Category 04 | £15797 GBP pp |
| Category 01 | £10532 GBP pp |
| Category 03 | £14066 GBP pp |



www.small-cruise-ships.com

01432 507 280 (within UK)

info@small-cruise-ships.com | small-cruise-ships.com



The Small Cruise Ship Collection

www.small-cruise-ships.com



small-cruise-ships.com

info@small-cruise-ships.com

PRICING

12-Nov-2027 to 28-Nov-2027

| | |
|-------------|---------------|
| Category AS | £19876 GBP pp |
| Category 04 | £16550 GBP pp |
| Category 03 | £14737 GBP pp |
| Category CS | £22550 GBP pp |
| Category BS | £21447 GBP pp |
| Category 02 | £13255 GBP pp |
| Category 01 | £11034 GBP pp |

24-Dec-2027 to 09-Jan-2028

| | |
|-------------|---------------|
| Category BS | £25028 GBP pp |
| Category CS | £26338 GBP pp |
| Category AS | £23232 GBP pp |
| Category 03 | £17340 GBP pp |
| Category 04 | £19305 GBP pp |
| Category 02 | £15560 GBP pp |
| Category 01 | £12454 GBP pp |

26-Nov-2027 to 12-Dec-2027

| | |
|-------------|---------------|
| Category CS | £20281 GBP pp |
| Category 04 | £14875 GBP pp |
| Category BS | £19230 GBP pp |
| Category AS | £17835 GBP pp |
| Category 03 | £13266 GBP pp |
| Category 02 | £11906 GBP pp |
| Category 01 | £10031 GBP pp |

07-Jan-2028 to 23-Jan-2028

| | |
|-------------|---------------|
| Category CS | £22369 GBP pp |
| Category BS | £21256 GBP pp |
| Category AS | £19731 GBP pp |
| Category 04 | £16392 GBP pp |
| Category 03 | £14730 GBP pp |
| Category 02 | £13218 GBP pp |
| Category 01 | £10580 GBP pp |

10-Dec-2027 to 26-Dec-2027

| | |
|-------------|---------------|
| Category CS | £22301 GBP pp |
| Category BS | £21135 GBP pp |
| Category AS | £19606 GBP pp |
| Category 04 | £16317 GBP pp |
| Category 03 | £14611 GBP pp |
| Category 02 | £13081 GBP pp |
| Category 01 | £10782 GBP pp |



The Small Cruise Ship Collection

www.small-cruise-ships.com



small-cruise-ships.com

info@small-cruise-ships.com

PRICING

21-Jan-2028 to 06-Feb-2028

| | |
|-------------|---------------|
| Category 04 | £15376 GBP pp |
| Category CS | £20872 GBP pp |
| Category BS | £19855 GBP pp |
| Category AS | £18440 GBP pp |
| Category 03 | £13837 GBP pp |
| Category 02 | £12449 GBP pp |
| Category 01 | £10031 GBP pp |

03-Mar-2028 to 19-Mar-2028

| | |
|-------------|---------------|
| Category CS | £20528 GBP pp |
| Category BS | £19539 GBP pp |
| Category AS | £18179 GBP pp |
| Category 04 | £15211 GBP pp |
| Category 03 | £13727 GBP pp |
| Category 02 | £12380 GBP pp |
| Category 01 | £10031 GBP pp |

04-Feb-2028 to 20-Feb-2028

| | |
|-------------|---------------|
| Category CS | £20872 GBP pp |
| Category BS | £19855 GBP pp |
| Category 03 | £13837 GBP pp |
| Category AS | £18440 GBP pp |
| Category 04 | £15376 GBP pp |
| Category 02 | £12449 GBP pp |
| Category 01 | £10031 GBP pp |

17-Mar-2028 to 02-Apr-2028

| | |
|-------------|---------------|
| Category CS | £20528 GBP pp |
| Category BS | £19539 GBP pp |
| Category AS | £18179 GBP pp |
| Category 04 | £15211 GBP pp |
| Category 03 | £13727 GBP pp |
| Category 02 | £12380 GBP pp |
| Category 01 | £10031 GBP pp |

18-Feb-2028 to 05-Mar-2028

| | |
|-------------|---------------|
| Category BS | £19539 GBP pp |
| Category CS | £20528 GBP pp |
| Category 04 | £15211 GBP pp |
| Category 03 | £13727 GBP pp |
| Category 02 | £12380 GBP pp |
| Category AS | £18179 GBP pp |
| Category 01 | £10031 GBP pp |



www.small-cruise-ships.com

01432 507 280 (within UK)

info@small-cruise-ships.com | small-cruise-ships.com