





## The Small Cruise Ship Collection

[www.small-cruise-ships.com](http://www.small-cruise-ships.com)

[small-cruise-ships.com](http://small-cruise-ships.com)

[info@small-cruise-ships.com](mailto:info@small-cruise-ships.com)

other colonies in the archipelago, you can approach nurturing females within a few metres. During breeding season this colony is also visited by territorial males, defending and mating their harem. There are two other emblematic species breeding here: male blue-footed boobies and great frigate birds who try to impress the females (and tourists) with clumsy dances, heaving their feet or blowing up their balloon-sized scarlet pouches.

**DAY 2: MONDAY** AM: Santa Fe PM: Black Turtle Cove (Santa Cruz)  
AM: Santa Fe island

During your excursion at Santa Fe island, you will get surprised at how close to you some curious sea lions waddle. Likewise approachable for a close-up are Galapagos hawks that usually perch at their outlooks, ready to snatch away a baby marine iguana or lava lizard. We start next a cactus forest trail, that gives a close-up view on how these surrealistic, house-high giant opuntia prickly pears have grown out larger than on any other island and tell a fascinating evolutionary story. At the calm, turquoise Barrington Bay, you can swim in close company with Galapagos sea lions, fluorescent blue chin parrot fishes, yellowtail surgeon fishes, whiptail stingrays, Pacific green turtles, whitetip reef sharks, and more.

PM - Black Turtle Cove

You will disembark the cruise in the afternoon, to explore Black Turtle Cove from the dinghy. This place is a living illustration of how mangroves alter the marine environment to create a rich and unique habitat. Three mangrove species crowd the area from the shore out into the lagoon, which reaches almost a mile inland. As we drift through quiet waters in the zodiac, you are

likely to see spotted eagle rays, which swim in a diamond formation. White-tipped reef sharks slip beneath the boat and Pacific green turtles come to the surface for air.

**DAY 3: TUESDAY** AM: Darwin Bay (Genovesa) PM: Prince Philip's Steps (Genovesa)  
AM: Darwin Bay (Genovesa)

As one of the outer islands and most exclusive places on the Galapagos, Genovesa is well worth last night's longer navigation. This compact site in the heart of its flooded crater shows the extremely varied coastal ecosystems of the Galapagos in miniature; nearly too much for a single day. Whimbrels and wandering tattlers forage actively along the surf, next to resting Galapagos sea lions. Impressive frigatebirds and red-footed boobies nest in the mangroves, where you can also see vocalists such as the yellow warbler, Darwin's finches and the Galapagos mockingbird. Uniquely, two subpopulations of the same species of large cactus finch differ in their singing

PM: Prince Philip's Steps (Genovesa)

Not only because of its historical English name (Tower) Genovesa has a royal touch. Follow in the footsteps of Prince Philip - Galapagos lover for many years - and visit this favourite birding spot with the largest breeding colonies of red-footed and Nazca boobies, and look for the remarkable short-eared owl that hunts on foot!

**DAY 4: WEDNESDAY** AM: Chinese Hat PM: Rabida  
AM: Chinese Hat

Approaching Chinese Hat from the north, you will understand



The Small Cruise Ship Collection

[www.small-cruise-ships.com](http://www.small-cruise-ships.com)

**01432 507 280** (within UK)

[info@small-cruise-ships.com](mailto:info@small-cruise-ships.com) | [small-cruise-ships.com](http://small-cruise-ships.com)





the reason of its name. You arrive just in time to witness how this young barren islet is being colonised by pioneer species sprouting from holes in the lava. The presence of Galapagos sea lions, countless marine iguanas, eagles and mockingbirds contribute to soil fertilisation. Snorkelling here is highly recommended, as it's home of a colony of Galapagos Penguins, critically endangered because of the effects of climate change. While you're swimming, they might approach curiously to your mask, alongside sea lions and elusive Pacific green turtles.

PM: Rabida island

This afternoon you have a 'wet landing' on the extraordinary red beach of Rabida island. Oxidised iron particles have given its rocks and sand an intense rusty colour. Contiguous to the beach is a shallow green lagoon, an oasis on this otherwise arid island, which attracts all kind of aquatic birds, like pintails and sometimes American flamingos. Between the evergreen foliage of the surrounding mangrove bushes, many species of songbirds hide and breed. One of the most outstanding attractions is the major breeding colony of brown pelicans, the only ones in the world that plunge-dive. On return you will be picked up by the inflatable dinghies, to get ready for snorkelling

DAY 5: THURSDAY AM: Charles Darwin Center (Santa Cruz) Transfer to Baltra airport.

AM - Charles Darwin

Research Station (Santa Cruz) The dinghies will bring you to the touristic pier of Puerto Ayora, in Santa Cruz island, from where you will be brought to the Charles Darwin Research Station. This institution was named after the British naturalist who developed his Theory of Evolution after visiting these islands in 1835, and

works on the conservation and restoration of the Galapagos ecosystems, as well as for the sustainable development of its communities. There is an interpretation centre about the National Park and its Marine Reserve. The most memorable part of your visit will probably be the successful breeding centre and the enclosures with Galapagos giant tortoises. After this visit, you will disembark the Tribute, and be transferred to Baltra airport.

Please note:

Itineraries are subject to change.



The Small Cruise  
Ship Collection

[www.small-cruise-ships.com](http://www.small-cruise-ships.com)

[small-cruise-ships.com](http://small-cruise-ships.com)

[info@small-cruise-ships.com](mailto:info@small-cruise-ships.com)

## YOUR SHIP: TRIBUTE

**YOUR SHIP:**

**Tribute**

**VESSEL TYPE:**

**LENGTH:**

**PASSENGER CAPACITY:**

**BUILT/REFURBISHED:**

Tribute - Luxury Galapagos cruise ship Experience Galapagos in Luxury: Indulge in sophisticated design and breathtaking ocean views aboard our cruise. Savour local flavors in elegant indoor and outdoor dining areas. Retreat to premium suites with modern amenities. Relax in the outdoor Jacuzzi while soaking in stunning Galapagos vistas. Amenities Indulge in absolute luxury as you explore the Galapagos Islands with our Tribute Cruise. Enjoy the finest amenities, including a cocktail bar and wine vault, an ocean-view dining experience, and a delightful coffee and chocolate corner. Our pop-up boutique offers exclusive treasures, while Freddy's lounge and library provide a tranquil escape. The upper deck invites you to unwind in the sunset lounge, rejuvenate in the private massage area, or stay active in the workout zone. On the sun deck, relish al fresco dining, savor a BBQ feast, and soak in breathtaking views from the panoramic lounge and sky tub. Your every desire is our pleasure. Suites and Cabins Immerse yourself in refinement aboard our Tribute Cruise. Choose from our elegantly appointed suites and cabins to find your perfect sanctuary. All cabins offer binoculars for wildlife enthusiasts. The Panorama Suites offer spacious comfort, with an average of 20m2, and feature superior foam

mattresses, a pillow menu, and individual air conditioning. The Premium Suites, averaging 25m2, include a convertible sofa, an in-suite espresso maker, double washbasin, and extra storage. Our Owner's Suite, an expansive 50m2, boasts a resting lounge, double washbasin, and in-suite espresso maker. Ocean Vista Suite (Oceanside Deck): A cozy 18 m2 suite with three portholes, private ensuite facilities, and the same thoughtful design and amenities as all suites -- ideal for flexible accommodation needs. Enjoy every moment in style. Elevated On-board Safety Ensuring the utmost safety on-board is our paramount priority. We have proudly acquired the International Safety Management Certificate from the International Marine Organisation (IMO), demonstrating our unwavering commitment to safety protocols. Tribute is equipped with state-of-the-art security equipment, adheres to stringent on-board regulations, and provides clear safety instructions. Scheduled maintenance and rigorous inspections maintain our yacht in impeccable, secure condition, ensuring peace of mind for all our



The Small Cruise  
Ship Collection

[www.small-cruise-ships.com](http://www.small-cruise-ships.com)

**01432 507 280** (within UK)

[info@small-cruise-ships.com](mailto:info@small-cruise-ships.com) | [small-cruise-ships.com](http://small-cruise-ships.com)





## The Small Cruise Ship Collection

[www.small-cruise-ships.com](http://www.small-cruise-ships.com)



[small-cruise-ships.com](http://small-cruise-ships.com)

[info@small-cruise-ships.com](mailto:info@small-cruise-ships.com)

esteemed guests.



The Small Cruise  
Ship Collection

[www.small-cruise-ships.com](http://www.small-cruise-ships.com)

**01432 507 280** (within UK)

[info@small-cruise-ships.com](mailto:info@small-cruise-ships.com) | [small-cruise-ships.com](http://small-cruise-ships.com)



# The Small Cruise Ship Collection

[www.small-cruise-ships.com](http://www.small-cruise-ships.com)

[small-cruise-ships.com](http://small-cruise-ships.com)

[info@small-cruise-ships.com](mailto:info@small-cruise-ships.com)

## INSIDE YOUR SHIP

BRIDGE DECK  
127 PANORAMIC SUITE 2042 / 127 PANORAMIC SUITE 2042



MAIN DECK  
127 PANORAMIC SUITE 2042 / CHAIRMAN SUITE 2042



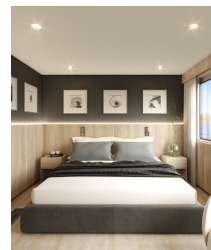
OCEANIDE DECK  
127 OCEANIDE SUITE 1042



SKY DECK



Suite. From



The Small Cruise Ship Collection

[www.small-cruise-ships.com](http://www.small-cruise-ships.com)

01432 507 280 (within UK)

[info@small-cruise-ships.com](mailto:info@small-cruise-ships.com) | [small-cruise-ships.com](http://small-cruise-ships.com)



The Small Cruise  
Ship Collection

[www.small-cruise-ships.com](http://www.small-cruise-ships.com)

[small-cruise-ships.com](http://small-cruise-ships.com)

[info@small-cruise-ships.com](mailto:info@small-cruise-ships.com)

## PRICING

**18-Jan-2026 to 22-Jan-2026**

Suite. From	£4616 GBP pp
-------------	--------------

**01-Feb-2026 to 05-Feb-2026**

Suite. From	£4616 GBP pp
-------------	--------------

**15-Feb-2026 to 19-Feb-2026**

Suite. From	£4616 GBP pp
-------------	--------------

**ADDITIONAL CHARGES:**

Galapagos National Park entrance  
fee & TCC 220 USD pp



The Small Cruise  
Ship Collection

[www.small-cruise-ships.com](http://www.small-cruise-ships.com)

**01432 507 280** (within UK)

[info@small-cruise-ships.com](mailto:info@small-cruise-ships.com) | [small-cruise-ships.com](http://small-cruise-ships.com)