

# The Small Cruise Ship Collection

www.small-cruise-ships.com

small-cruise-ships.com

info@small-cruise-ships.com

## TOTAL WORK OF ART GREENLAND AND CANADA - ARCTIC SMALL SHIP CRUISE

Autumnal play of colours: between the ice-blue coasts of Greenland and the red-and-yellow backdrop of Indian summer along the St Lawrence River, nature and charming towns invite you to enjoy the marvellous scenery.



### ITINERARY

Day 1 Individual travel arrangements to cruise departure point Hamburg/Germany, departure 18.00 hrs

Day 2 Relaxation at sea

Day 3 Kirkwall/Orkney Islands/Great Britain, 12.00 – 18.00 hrs  
Kirkwall, the main town on the Orkney Islands, boasts historical charm and a rich history dating back to the eleventh century. Back then, it was still called Kirkjuvagr - "church in the bay" - and today the cityscape is still characterised by the impressive

The Small Cruise Ship Collection  
www.small-cruise-ships.com

01432 507 280 (within UK)

info@small-cruise-ships.com | small-cruise-ships.com



## The Small Cruise Ship Collection

[www.small-cruise-ships.com](http://www.small-cruise-ships.com)

[small-cruise-ships.com](http://small-cruise-ships.com)

[info@small-cruise-ships.com](mailto:info@small-cruise-ships.com)

St Magnus Cathedral. The Orkney Islands, which stretch along the northern tip of Scotland, have a magical atmosphere that can be felt as you approach the harbour, when dozens of little green islands emerge out of the fog. Archaeological wonders such as the Neolithic settlement of Skara Brae, the mystical Ring of Brodgar or the Maeshowe chambered cairn provide deep insights into the historical heart of Scotland and draw history lovers under their spell.

Days 4 - 6 Relaxation at sea

Day 7 Tasiilaq/Greenland, 08.00 - 17.00 hrs

Tasiilaq is located on the east coast of Greenland and is the largest settlement in the region. Surrounded by high mountains, deep-blue fjords and glaciers, it is a good starting point for exploring Arctic nature. The colourful houses at the harbour characterise the town's appearance, while the locals' boats dominate everyday life. Even today, the Inuit still practise traditional crafts such as knitting and carving, passing on their culture and customs to future generations. Set off on hikes along the fjords or experience the impressive landscape up close on kayaking tours amidst the icebergs.

Day 8 Relaxation at sea

Day 9 Cruising through Prince Christian Sound/Greenland, 08.00 - 14.00 hrs

The ice-dependent passage through Prince Christian Sound - one of the most beautiful passages in Greenland, 64 km (40 mi.) long and in some places barely 500 m (1,640 ft) wide - offers an intoxicating monumental view of nature. Waterfalls and glaciers that reach into the turquoise-coloured water, as well as colourful fishing huts, will pass by you. A cry of "Whale up ahead!" could sound from the bridge at any time, and the many

open deck areas provide the best opportunities for sightings.

Day 10 Paamiut/Greenland, 08.00 - 17.00 hrs

Paamiut, on the south-west coast of Greenland, is surrounded by fjords and rugged hills. The town combines everyday life with the endless expanse of Arctic nature and it is also an important centre for fishing - as can be seen in the lively harbour and small craft workshops. The colourful wooden houses scattered across the bay are characteristic, and their colours once had a special meaning. The surrounding area boasts impressive glaciers, while the wildlife includes seals, whales and the majestic sea eagle, the proud symbol of the region.

Days 11 - 12 Relaxation at sea

Day 13 Corner Brook/Newfoundland/Canada, 08.00 - 14.00 hrs

Located on the west coast of Newfoundland, Corner Brook is considered the gateway to the island's natural treasures. About an hour away, Gros Morne National Park beckons with dramatic fjords, striking table mountains and sparkling lakes. But Corner Brook also delights its visitors: the Arts and Culture Centre with its theatre, gallery and library, small boutiques and cosy cafes shape the town, as does its scenic location on the River Humber. Green oases such as Margaret Bowater Park provide peace and relaxation - an ideal place for walks in the middle of the city.

Day 14 Havre-Saint-Pierre/Quebec/Canada, 08.00 - 17.00 hrs

Havre-Saint-Pierre is situated on the north-western shore of the St Lawrence River in the province of Quebec. It's a small fishing village that is now considered the starting point for one of Canada's most fascinating natural landscapes. Here you can expect encounters with a diverse range of wildlife, hikes through

The Small Cruise Ship Collection  
[www.small-cruise-ships.com](http://www.small-cruise-ships.com)

01432 507 280 (within UK)

[info@small-cruise-ships.com](mailto:info@small-cruise-ships.com) | [small-cruise-ships.com](http://small-cruise-ships.com)



## The Small Cruise Ship Collection

[www.small-cruise-ships.com](http://www.small-cruise-ships.com)

[small-cruise-ships.com](http://small-cruise-ships.com)

[info@small-cruise-ships.com](mailto:info@small-cruise-ships.com)

unspoilt nature and exciting cultural discoveries. Directly off the coast lies the Mingan Archipelago National Park Reserve - famous for its bizarre limestone monoliths, which have been shaped by the sea over thousands of years. The area around Havre-Saint-Pierre boasts exceptional flora and fauna: seabirds, whales and seals can frequently be seen here.

### Day 15 Baie-Comeau/Canada, 09.00 - 19.00 hrs

Baie-Comeau in the province of Quebec is surrounded by the vibrant forests of Indian summer. Urban life, with its libraries, museums and small boutiques in the centre, blends harmoniously with nature on the north-western shore of the St Lawrence River. From the waterfront promenade, dense forests and sparkling lakes invite visitors to go hiking and boating. Elks, birds and other wildlife can be observed by the river, while quiet beaches and idyllic spots allow you to experience the diversity of this region.

### Day 16 Saguenay (La Baie)/Quebec/Canada, 13.00 - 24.00 hrs

Jacques Cartier first set foot in the area around Saguenay in 1535. The explorer was amazed by the vastness of the region and named it "Kingdom". The reference has stuck, and Saguenay-Lac-Saint-Jean never misses an opportunity to remind its visitors of this with a variety of cultural and historical activities. It was only in 2002 that the present-day city of Saguenay was officially created by merging the surrounding small towns and communities.

### Day 17 Tadoussac/Canada, 07.00 - 18.00 hrs

Idyllically situated at the confluence of the Saguenay and St Lawrence rivers, Tadoussac is considered one of the oldest European settlements in Canada. The small village with its colourful houses and charming 18th-century wooden chapel

continues to attract visitors to this day. Tadoussac is particularly famous for whale watching, as whales frolic in the nutrient-rich waters. Hiking trails along the coast invite you to enjoy views of the fjord, river mouth and open sea.

### Day 18 Quebec/Canada, arrival 08.30 hrs

The mighty Chateau Frontenac towers high above the St Lawrence River and is a landmark of Quebec. At its feet lies the lower town with its cobbled streets, lively squares and 17th-century merchant houses, which give the city its distinctive European character. The imposing city walls and the mighty citadel of the upper town form a unique ensemble that was declared a World Heritage Site by UNESCO in 1985. When the evening light bathes the old walls in a golden hue and fresh autumn air sweeps through the streets, Quebec reveals its very special charm - shaped by history, indulgence and the French way of life.

### Day 19 Quebec/Canada, departure 06.00 hrs & Montreal/Canada, arrival 20.00 hrs Overnight stay on board

Enjoy the flair long after sunset, because your ship will stay overnight here.

### Day 20 Montreal/Canada Overnight stay on board

Montreal, the largest city in the province of Quebec, is located on an island in the St Lawrence River. It owes its name to Mont Royal: surrounding this green hill is a cosmopolitan city that combines French coolness with a North American lifestyle. In the old town of Vieux-Montreal, cobblestone streets, squares and churches are reminders of its founding in the 17th century. Modern high-rise buildings stand right next to the quarter. Montreal is a cultural centre: museums, festivals and diverse range of restaurants reflect its creative energy. In the evening,

The Small Cruise Ship Collection  
[www.small-cruise-ships.com](http://www.small-cruise-ships.com)

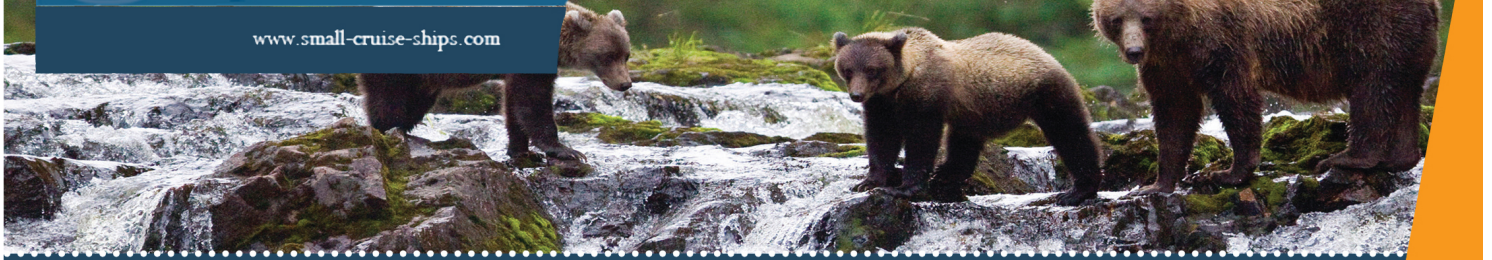
01432 507 280 (within UK)

[info@small-cruise-ships.com](mailto:info@small-cruise-ships.com) | [small-cruise-ships.com](http://small-cruise-ships.com)



The Small Cruise  
Ship Collection

[www.small-cruise-ships.com](http://www.small-cruise-ships.com)



[small-cruise-ships.com](http://small-cruise-ships.com)

[info@small-cruise-ships.com](mailto:info@small-cruise-ships.com)

neighbourhoods such as the Quartier des Spectacles attract visitors with theatre and music to enjoy its vibrant nightlife.

Day 21 Montreal/Canada

Please note:

\* The shore activities are not included in the cruise price and are in the planning stage. Subject to change.



The Small Cruise  
Ship Collection

[www.small-cruise-ships.com](http://www.small-cruise-ships.com)

**01432 507 280** (within UK)

[info@small-cruise-ships.com](mailto:info@small-cruise-ships.com) | [small-cruise-ships.com](http://small-cruise-ships.com)

# The Small Cruise Ship Collection

[www.small-cruise-ships.com](http://www.small-cruise-ships.com)

[small-cruise-ships.com](http://small-cruise-ships.com)

[info@small-cruise-ships.com](mailto:info@small-cruise-ships.com)

## YOUR SHIP: EUROPA

**YOUR SHIP:** Europa

**VESSEL TYPE:**

**LENGTH:**

**PASSENGER CAPACITY:**

**BUILT/REFURBISHED:**

Extensive space for a maximum of 400 guests A crew-to-guest ratio of almost one to one Outside suites only, most with a veranda Five restaurants for the ultimate in culinary indulgence - including THE GLOBE by three-star chef Kevin Fehling Top-class entertainment: experience international artists and experts live on board EUROPA Refresh: new fitness and wellness concepts for even more well-being MS EUROPA is an award-winning luxury cruise ship renowned for setting global standards in refined small-ship cruising. Accommodating a maximum of just 400 guests, the ship offers an intimate and highly personalised experience, supported by an almost one-to-one crew-to-guest ratio. Designed around the concept of casual luxury, EUROPA combines spacious surroundings, attentive service, and elegant all-suite accommodation, with all suites featuring ocean views and most offering private verandas. Onboard, guests can enjoy five exceptional restaurants, including fine dining concepts created in collaboration with acclaimed chefs, alongside world-class entertainment, wellness facilities, and thoughtfully curated enrichment experiences. The ship's smaller size allows access to unique itineraries and exclusive ports beyond the reach of larger vessels, while recent EUROPA Refresh

enhancements have introduced updated fitness and wellness concepts for an even more elevated onboard experience. Blending sophistication, comfort, and flexibility, MS EUROPA delivers a truly premium voyage to destinations



worldwide.

The Small Cruise Ship Collection

[www.small-cruise-ships.com](http://www.small-cruise-ships.com)

01432 507 280 (within UK)

[info@small-cruise-ships.com](mailto:info@small-cruise-ships.com) | [small-cruise-ships.com](http://small-cruise-ships.com)



# The Small Cruise Ship Collection

[www.small-cruise-ships.com](http://www.small-cruise-ships.com)



[small-cruise-ships.com](http://small-cruise-ships.com)

[info@small-cruise-ships.com](mailto:info@small-cruise-ships.com)

## INSIDE YOUR SHIP

Penthouse Deluxe Suite

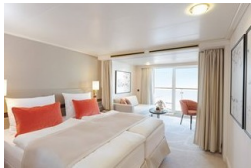
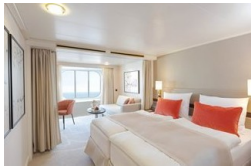


SPA Suite



Suite with panorama window

Veranda Suite Cat. 4-5





The Small Cruise  
Ship Collection

[www.small-cruise-ships.com](http://www.small-cruise-ships.com)



[small-cruise-ships.com](http://small-cruise-ships.com)

[info@small-cruise-ships.com](mailto:info@small-cruise-ships.com)

## PRICING

27-Sep-2028 to 17-Oct-2028

Suite with panorama window	£8519 GBP pp
Veranda Suite Cat. 4-5	£10955 GBP pp
Veranda Suite Cat. 6-7	£14329 GBP pp
SPA Suite	£15479 GBP pp
Penthouse Deluxe Suite	£24835 GBP pp



The Small Cruise  
Ship Collection

[www.small-cruise-ships.com](http://www.small-cruise-ships.com)

01432 507 280 (within UK)

[info@small-cruise-ships.com](mailto:info@small-cruise-ships.com) | [small-cruise-ships.com](http://small-cruise-ships.com)