



The Small Cruise Ship Collection

www.small-cruise-ships.com

small-cruise-ships.com

info@small-cruise-ships.com

TOTAL SOLAR ECLIPSE IN THE MEDITERRANEAN - FRANCE & SPAIN LUXURY CRUISE

This cruise, will cultivate the art of peaceful travel as well as a family spirit, thanks to its customised activities on board and on shore for youngsters, with the Kid Explorers Club. On these summer days, take a journey towards the unexpected, experience the extraordinary and embark on an exceptional 9-day cruise, along Mediterranean shores, with their heady mix of flavours, architectural styles and age-old traditions, to seek out a rare phenomenon offered by the sky: the total solar eclipse. Throughout your journey aboard *Le Boréal*, discover the secrets of this exceptional event thanks to the presence of Joe Rao, meteorologist and eclipse chaser, and Serge Brunier, science journalist, author, photographer and eclipse chaser. Throughout your journey, you will benefit from an excursion included per person per port of call, to choose from a selection offered by PONANT. During this cruise, dive into the teeming waters of the wild Revellata peninsula at the gates of Calvi, explore the pretty villages of Gordes, Les Baux-de-Provence and Saint-Remy-de-Provence leaving from Marseille or visit the Miro Foundation in Palma. The diversity of experiences on offer promises you intense and varied moments (to discover the full range of excursions, go to the itinerary tab). From Nice, you will set sail for Calvi in the heart of the Balagne region. Between steep peaks and sublime beaches with turquoise waters, you will experience a wild and authentic Corsica. Your ship will set sail towards the southern tip of Corsica, to Bonifacio. A veritable fortress sculpted by the wind and the spray, the "sentinel city" will reveal its historical centre and its long cobbled streets. You will reach Marseille, the oldest port city in France, which is constantly renewing itself beneath the protective gaze of the

Basilica of Our Lady of the Guard. *Le Boréal* will sail to the Roussillon region, close to Spain. The charming fishing port of Port-Vendres will stand before you. Here, you will be bewitched by a unique blend of historic heritage and exceptional natural scenery, its backdrop the lush Albera Massif Mountain range running down towards the coast. You will sail towards Barcelona. Truly an open-air museum, the "prodigious town" reveals an astonishing range of artistic treasures and museums, combining Roman ruins, medieval districts and a number of avant-garde elements from the 20th Century. Further east, you will reach the Balearic Islands, which are anchored off the coast of the Spanish coastline and will be a highlight of your Mediterranean journey. After you have discovered the treasures of Palma de Mallorca, the Captain will take you -- in the total darkness of night and weather conditions permitting -- off the coast of the main Balearic Island, which is the best place to observe this rare phenomenon. You will be captivated by the unique spectacle provided by this 16th total eclipse of the 21st century, during which the Moon will obscure the Sun and reveal the solar corona. This cruise, a veritable invitation to dream big, to be within reach of immensity and to reconnect with pure magic, will conclude in Nice, famous for its interminable riviera. *Le Boréal* is suitable for children aged 4 to 13 years old. We are privileged guests in these places, where we are at the mercy of the weather conditions. As we cannot control the weather conditions, we cannot guarantee the observation of this total solar eclipse. Nevertheless, the Captain will have room for manoeuvre and will be able to sail towards the most suitable places on the eclipse's

The Small Cruise Ship Collection
www.small-cruise-ships.com

01432 507 280 (within UK)

info@small-cruise-ships.com | small-cruise-ships.com



The Small Cruise Ship Collection

www.small-cruise-ships.com

small-cruise-ships.com

info@small-cruise-ships.com

cultures which, over the centuries, have made up its wealth. A stroll through the Old Port will allow you to discover the places corresponding to the city founded by the Greeks as well as Notre-Dame-de-la-Garde Basilica, with its astonishing neo-Byzantine architecture, which overlooks it. Close to the quays, the Place de Lenche, which covers the ancient agora, will be perfect for a break in one of its lively cafes before melting into the maze of narrow streets with colourful houses in the Panier district, just a stone's throw away.

Day 5 - Port-Vendres

The coastal town of Port-Vendres stands proudly in the heart of the Roussillon region. In the curve of a sheltered bay, Port-Vendres offers a unique blend of historic heritage and exceptional natural scenery. The 17th-century fortifications, erected by Vauban, bear witness to its strategic importance to the defence of France. The coastal town's many charming features include its cobblestoned streets, edged with houses with colourful façades, which gracefully wind their way to the fishing port, where traditional boats mingle with luxury yachts. In the distance, the foothills of the Alberes tumble down to the coast, offering a green setting for this haven of peace where there is a harmonious blend of the hustle and bustle of the quays and the serenity of walks on the ramparts.

Day 6 - Barcelona

Located on the seashore between the mountains of Montjuïc and Tibidabo, Barcelona offers its many visitors a perfect blend of tradition and modernism. Truly an open-air museum, the

"prodigious town" reveals an astonishing range of artistic treasures and museums, combining Roman ruins, medieval districts and a number of avant-garde elements from the 20th Century. Over the years, it has been marked by some of the greatest artists, such as Picasso, Miro or Gaudi, most of whose work has been listed as World Heritage Sites by UNESCO. Take the time to stroll along the Ramblas and enjoy the gentle, typically Mediterranean lifestyle of the capital of Catalonia.

Day 7 - Palma de Mallorca, Balearic Islands

Palma de Mallorca will reveal its many treasures: idyllic coves, majestic limestone cliffs that plunge into the clear sapphire- and turquoise-coloured waters of the Mediterranean, and vast plains planted with almond trees, olive trees and vineyards. When your ship calls at the capital of the Balearic Islands, take a walk to discover its emblematic monuments, such as its famous cathedral, and amble through its old streets. Here, like a painting, the island's historical heritage forms a backdrop to the lively and warm cosmopolitan atmosphere of the Mediterranean.

Day 8 - At sea

During your journey at sea, make the most of the many services and activities on board. Treat yourself to a moment of relaxation in the spa or stay in shape in the fitness centre. Depending on the season, let yourself be tempted by the swimming pool or a spot of sunbathing. This journey without a port of call will also be an opportunity to enjoy the conferences or shows proposed on board, depending on the activities offered, or to do some shopping in the boutique or to meet the PONANT photographers

The Small Cruise Ship Collection
www.small-cruise-ships.com

01432 507 280 (within UK)

info@small-cruise-ships.com | small-cruise-ships.com



The Small Cruise
Ship Collection

www.small-cruise-ships.com

small-cruise-ships.com

info@small-cruise-ships.com

in their dedicated space. As for lovers of the open sea, they will be able to visit the ship's upper deck to admire the spectacle of the waves and perhaps be lucky enough to observe marine species. A truly enchanted interlude, combining comfort, rest and entertainment.

Day 9 - Nice

Capital of the Cote d'Azur, Nice is surrounded by an amphitheatre of hills and mountains that protects it from the wind. You will probably want to explore the Promenade des Anglais, where you can sit on one of the famous blue chairs laid out opposite the baie des Anges. The Chateau hill is also a very pleasant place to walk. This is the entrance to the old city, with its bustling markets and regional products along the main street, the Cours Saleya.

Please note:

Itineraries are subject to change.



The Small Cruise
Ship Collection

www.small-cruise-ships.com

01432 507 280 (within UK)

info@small-cruise-ships.com | small-cruise-ships.com



The Small Cruise Ship Collection

www.small-cruise-ships.com

small-cruise-ships.com

info@small-cruise-ships.com

YOUR SHIP: LE BOREAL

YOUR SHIP:	Le Boreal
VESSEL TYPE:	142 metres. Passenger Capacity: 264 (in twin cabins, just 200 in Antarctica). Built: 2011
LENGTH:	
PASSENGER CAPACITY:	
BUILT/REFURBISHED:	

Luxury Expedition / Cruise Ship A superb mega-yacht with 132 cabins, she is the fruit of the expertise of the Italian Fincantieri shipyard and French sophistication, as interpreted by designer Jean-Philippe Nuel. Le Boreal creates a unique atmosphere, a subtle blend of luxury, intimacy and well-being. The best materials, discreet elegance and a tasteful decor combined with exterior and interior lines to reflect a nautical mood. On board, soothing neutral tones are enlivened by splashes of red, our signature theme linking tradition and innovation to create personal touches in the spirit of a "private yacht". Cuisine Loyal to the great French tradition, the haute cuisine on board is worthy of the finest restaurants, where discreet, attentive service is the hallmark. Choose from two restaurants for breakfast, lunch and dinner. The Gastronomic Restaurant is situated on Le Liberte Deck and serves you French and international cuisine accompanied by fine wine. In the Grill Restaurant, you have the opportunity to eat outside and enjoy buffet lunch and themed dinner. Life On Board Whether you want to join other guests in the theatre or games area (Wii™ consoles, etc), or relax on your

own in a quiet corner of the library, Le Boreal has been designed to meet the needs of every guest. Everything has been done to preserve the independence of each guest to suit their personal tastes: lounges for lectures and shows, a spa in partnership with Carita™, but also more intimate spaces such as the library and internet corner. Comfortable cabins, nearly all with private balcony, are available for families either as triples or as communicating cabins. There is also a games area with Wii™ consoles, children's menus, and a baby-sitting service. Just as if you were on a private yacht, your time is your own to do as you please. Fitted with the latest equipment (Kinesis Wall, running machine) and in partnership with the famous Carita™ brand, the Beauty Centre on Le Boreal welcomes you for some relaxation and pampering (beauty treatments, hairdresser, hammam, balneotherapy). Wheelchairs 3 specially adapted wheelchair cabins (Deck 3 = Superior cabin no. 307, no balcony, Deck 4 = Prestige Cabin no. 407 - with balcony and Deck 5 = Prestige Cabin no 509, with balcony) and lifts to all decks/areas. Please click the following links to read more about Ponant and the other Ponant

The Small Cruise Ship Collection
www.small-cruise-ships.com

01432 507 280 (within UK)

info@small-cruise-ships.com | small-cruise-ships.com



The Small Cruise Ship Collection

www.small-cruise-ships.com



small-cruise-ships.com

info@small-cruise-ships.com



cruise ships.



The Small Cruise Ship Collection

www.small-cruise-ships.com

01432 507 280 (within UK)

info@small-cruise-ships.com | small-cruise-ships.com

The Small Cruise Ship Collection

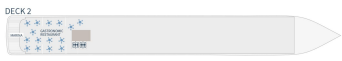
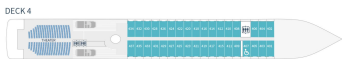
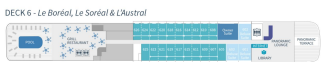
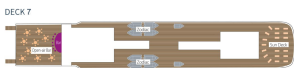
www.small-cruise-ships.com

small-cruise-ships.com

info@small-cruise-ships.com

INSIDE YOUR SHIP

Deck plans - Le Boréal, L'Austral, Le Soléal & Le Lyrial



DECK 7
Open-air bar - Sun deck

DECK 6:
24 Deluxe Suites, Le Soléal: Owner's Suite - 3 Deluxe Suites with private balcony - 33 Prestige staterooms with private balcony (with 18 Prestige staterooms convertible into 9 Prestige suites)
Le Lyrial: Owner's Suite - 1 Grand Privilege Suite - 3 Deluxe Suites with private balcony - 3 Grand Deluxe Suite - 8 Privilege Suites - 1 Prestige stateroom - Pool - Grill Restaurant - Internet space - Library - Panoramic lounge - Panoramic terrace

DECK 5:
37 Prestige staterooms with private balcony with 22 Prestige staterooms convertible into 12 Prestige suites - Fitness - PONANT yacht spa (Bathhouse, Hammam, Massage, hairdressing) - Relaxation room - Image & photo desk - Bridge

DECK 4:
36 Prestige Staterooms with private balcony - Theater

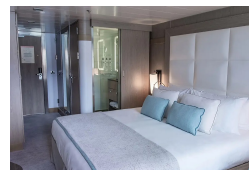
DECK 3:
38 Deluxe Staterooms with private balcony - 8 Superior Staterooms - Main lounge - Shop - Reception Desk - Excursion Desk - Medical center

DECK 2:
Gastronomy - Restaurant - Marina

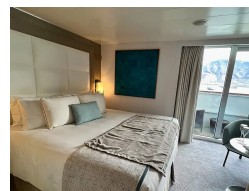
- Owner's Suite Deck 6
- Privilege Suites Deck 6 - Le Lyrial
- Grand Privilege Suite Deck 6 - Le Lyrial
- Prestige Suites Ports 6 - 8 (except Le Lyrial)
- Grand Deluxe Suites Deck 6 - Le Lyrial
- Deluxe Suites Deck 6
- Prestige Staterooms Deck 4 - 5 - 6
- Deluxe Staterooms Deck 3
- Superior Staterooms Deck 3



Deluxe Stateroom



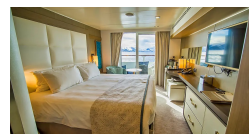
Deluxe Suite



Prestige Deck 4



Prestige Deck 5



Prestige Deck 5 Suite

Prestige Deck 6

Prestige Deck 6 Suite

Superior Stateroom



The Small Cruise Ship Collection

www.small-cruise-ships.com

small-cruise-ships.com

info@small-cruise-ships.com

PRICING

06-Aug-2026 to 14-Aug-2026

Prestige Deck 6 Suite	£12315 GBP pp
Prestige Deck 5 Suite	£12005 GBP pp
Prestige Deck 6	£6655 GBP pp
Prestige Deck 5	£6295 GBP pp
Deluxe Suite	£10805 GBP pp
Deluxe Stateroom	£5685 GBP pp
Prestige Deck 4	£5995 GBP pp
Superior Stateroom	£5395 GBP pp