



The Small Cruise  
Ship Collection

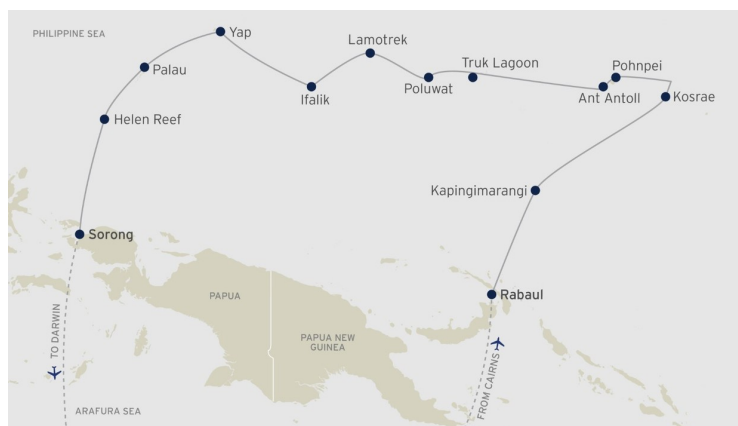
[www.small-cruise-ships.com](http://www.small-cruise-ships.com)

[small-cruise-ships.com](http://small-cruise-ships.com)

[info@small-cruise-ships.com](mailto:info@small-cruise-ships.com)

## THROUGH THE ISLANDS & ATOLLS OF MICRONESIA - CRUISE FROM RABAU TO SORONG

Our long history of operating in New Guinea and Micronesia allows us to showcase thriving marine ecosystems and rare bird species. Aboard this 21-night voyage, discover the rich tribal cultures of Kosrae, Pohnpei, Truk Lagoon and Yap, intriguing ancestral traditions, and warm local welcomes. Gain admiration for the intricate craftwork and artifacts that celebrate and preserve local cultures. On the island of Pohnpei, take a short accessible walk through the forest to the gushing Kepriohi Waterfall, for a dip beneath the falls. You will be accompanied by our expert guides who will offer interpretation and share knowledge along the way. Dive into crystal-clear waters at most stops, exploring lagoons and pristine biosphere reserves. Onboard, enjoy fresh seasonal delicacies prepared by our chefs and sip on a glass of Australian wines and brews. With an intimate atmosphere and our renowned warm Australian hospitality, this itinerary promises an epic adventure.



### ITINERARY

DAY 1: DEPART RABAU, PAPUA NEW GUINEA

Start your journey by boarding a direct flight from Cairns to Rabaul. Once you reach Rabaul, sit back and relax at the Rapopo Resort before boarding the ship at 3:00pm with departure set for 4:00pm.

Guests opting for the charter flight will have pre-embarkation details outlined in the pre-cruise documentation, 3 months prior to departure. For guests not taking the charter flight, the meeting venue will be outlined in the pre-cruise departure documentation, also 3 months prior to departure.

AT SEA



The Small Cruise  
Ship Collection

[www.small-cruise-ships.com](http://www.small-cruise-ships.com)

01432 507 280 (within UK)

[info@small-cruise-ships.com](mailto:info@small-cruise-ships.com) | [small-cruise-ships.com](http://small-cruise-ships.com)



## The Small Cruise Ship Collection

[www.small-cruise-ships.com](http://www.small-cruise-ships.com)



[small-cruise-ships.com](http://small-cruise-ships.com)

[info@small-cruise-ships.com](mailto:info@small-cruise-ships.com)

Today, you will be introduced to Micronesian culture and protocols. There will be briefings on snorkeling, diving, and other activities including presentations by Guest Lecturers.

### KAPINGAMARANGI ATOLL, MICRONESIA

Kapingamarangi is the most southerly point of Micronesia and a Polynesian outlier, located some 740km from the main island, the state of Pohnpei. The total area of the atoll including the lagoon is 74km sq, it has 33 wooded islets on the eastern side and a population of around 500. Here, you will get to visit the local village where islanders are well known for their wooden carvings. There is also the opportunity to purchase handmade souvenirs and swim in the pristine azure waters on our visit.

### SEA DAY

Kick back and unwind while our crew organises fun activities for you or engage in conversations with newfound friends on board. Alternatively, peruse our well-stocked libraries and choose your favourite book for the day.

### KOSRAE, MICRONESIA

The mountainous island of Kosrae is known as the 'island of the sleeping lady' and is the easternmost state in the Federated States of Micronesia. Kayak in the mangrove habitats and explore the enigmatic Lelu Ruins site, once an impressive city covering 20 hectares with an extensive canal system, social structure and pyramidal tombs. In the afternoon, enjoy snorkelling and diving. Explore the island by guided jungle walks and visit the Giant Clam Farm or spend time conversing with the local people including a traditional performance.

### SEA DAY

Enjoy a relaxing day at sea with presentations by our expert Guest Lecturers. For free time, many guests choose to chat with new-found friends, read a book from our onboard library, browse the art gallery or simply gaze out to sea in serene bliss.

### POHNPEI (KOLONIA), MICRONESIA

Pohnpei formally known as Ponape or Ascension is part of the Sevyavin Islands which are part of the larger Caroline Islands group, part of Pohnpei State on the FSM. The major population centres on Pohnpei are Palikir the FSM Capital and Kolonia the



The Small Cruise Ship Collection

[www.small-cruise-ships.com](http://www.small-cruise-ships.com)

**01432 507 280** (within UK)

[info@small-cruise-ships.com](mailto:info@small-cruise-ships.com) | [small-cruise-ships.com](http://small-cruise-ships.com)





## The Small Cruise Ship Collection

[www.small-cruise-ships.com](http://www.small-cruise-ships.com)



[small-cruise-ships.com](http://small-cruise-ships.com)

[info@small-cruise-ships.com](mailto:info@small-cruise-ships.com)

capital of Pohnpei State. Visit the archaeological site of Nan Madol, a stone city with many ocean-filled canals and channels. Known as the 'Venice of the Pacific', the ancient city was a royal civilisation in the 12th century. Enjoy a walk to the Kepiho Falls followed by lunch organised by our crew.

### ANT ATOLL, MICRONESIA

Walk through the Ant Atoll biosphere preserve which is recognised by UNESCO and which is owned by the Rohsa (traditional leader/king). Rohsa has refused all attempts to develop this area preferring it to remain in its natural state and is home to a stunning coral reef where you can snorkel or dive. Home to some of the largest colonies of terns, black noddies and frigatebirds in the Pacific, the lagoon also has a thriving population of grey reef sharks. After exploring the island, enjoy an exclusive remote BBQ lunch set up by our crew.

### SEA DAY

Enjoy a sea day to spend at your leisure.

### TRUK LAGOON, MICRONESIA

With a protective reef of 225km enclosing the natural harbour, Truk lagoon was the perfect location for Japan's World War II South Pacific base. It became the site of a major USA attack called Operation Hailstone in Feb 1944, leaving behind many wrecks which now provide world-class wreck diving. This is a great opportunity for certified divers on board to do up to 3 dives and snorkellers to swim over World War II wrecks and coral reef systems. Our Expedition Leader will arrange for a historical guided walk including the abandoned Air Force base on Etten Island.

### POLUWAT, MICRONESIA

At Poluwat Atoll, stroll through the local village for a guided look into the lifestyle and culture of the local people. Enjoy a relaxing afternoon swimming in the crystal-clear waters and then treat yourself to afternoon tea and Mimosa's on a remote uninhabited atoll.

### LAMOTREK, MICRONESIA

As we sail to Lamotrek, be welcomed into the village with leis, local dancing and singing. Local guides will then take you around the village to learn about medicines and local crafts. Lamotrek is a coral atoll made up of three Islands Falaite, Pague and Lamotrek, it sits in the central Caroline Islands in the Pacific



The Small Cruise Ship Collection

[www.small-cruise-ships.com](http://www.small-cruise-ships.com)

**01432 507 280** (within UK)

[info@small-cruise-ships.com](mailto:info@small-cruise-ships.com) | [small-cruise-ships.com](http://small-cruise-ships.com)



## The Small Cruise Ship Collection

[www.small-cruise-ships.com](http://www.small-cruise-ships.com)



[small-cruise-ships.com](http://small-cruise-ships.com)

[info@small-cruise-ships.com](mailto:info@small-cruise-ships.com)

Ocean part of the Yap district state in FSM. Here, witness demonstrations of weaving and the creation of traditional foods as well as you can go canoe sailing with the locals or enjoy a snorkel/swim or dive on the nearby reef systems.

### IFALIK, MICRONESIA

One of the most traditional villages in Micronesia, Ifalik is determined to maintain a cultural integrity that we are privileged to experience. It is located 700 km southeast of Yap Island. The total land area is 1.47sq. km but has a large lagoon for guests to visit. Learn the history behind Ifalik being known as a "warrior island". Before European contact, its warriors invaded the outer islands in Yap as well as some of the outer islands in Chuuk. Be welcomed by villagers in traditional/ceremonial headdresses and later enjoy a guided walk where you can watch and try the local art of weaving and basket making. Enjoy another spectacular snorkel/swim or dive as well as bird watching on a remote beach.

### SEA DAY

During your day at sea, relax and treat yourself to gourmet dining experiences, savoring delights prepared by our talented chefs.

### YAP ISLAND, MICRONESIA

Spend your day at Yap by visiting the village of Kaday with local guides- home to the Stone Money Bank. Yap State is one of the four states of the Federated States of Micronesia. The main island of Yap is famous for its stone currency - limestone discs (Rai) spanning in size from 4m to 4cm in diameter. Experience the famous Bamboo dance performed by young dancers and spend the rest of your day snorkelling or diving with local guides.

### SEA DAY

Enjoy a relaxing day at sea with presentations by our expert Guest Lecturers. You will hear about the fascinating history of Micronesia and the islands you are going to visit. Explore our extensive onboard library, while the hours away with a selection of games or simply gaze over the seas.

### PALAU, REPUBLIC OF PALAU

Officially the Republic of Palau is an Island country in the Micronesian sub region of Oceania in the western pacific, the republic consists of 340 Islands and connects the chain of the Caroline Islands with parts of the FSM. While the ship is anchored in Koror, certified divers have the opportunity to



The Small Cruise Ship Collection

[www.small-cruise-ships.com](http://www.small-cruise-ships.com)

**01432 507 280** (within UK)

[info@small-cruise-ships.com](mailto:info@small-cruise-ships.com) | [small-cruise-ships.com](http://small-cruise-ships.com)



## The Small Cruise Ship Collection

[www.small-cruise-ships.com](http://www.small-cruise-ships.com)



[small-cruise-ships.com](http://small-cruise-ships.com)

[info@small-cruise-ships.com](mailto:info@small-cruise-ships.com)

embark on 1 or 2 dives guided by locals. For those preferring snorkeling, explore the stunning Rock Island with local guides. Additionally, immerse yourself in the city's culture with a guided tour, including a visit to the excellent local museum.

### SEA DAY

Relax on deck with onboard presentations from our Guest Lecturers, workshops, and demonstrations.

### HELEN REEF (SONSOROL), PALAU

Meet with local rangers for insights into turtle conservation efforts before embarking on a guided nature walk. Engage in birdwatching activities and then dive into the nearby reef systems for an unforgettable snorkelling, swimming, or diving experience. Located in the southwest Islands of Palau, Helen Reef is a large, enclosed Atoll with extensive reef flats and a large channel complex and a small Island that is a critical sea turtle nesting site and a nesting site for many sea bird species.

### SEA DAY

Enjoy a relaxing day at sea with presentations by our expert

Guest Lecturers. For free time, many guests choose to chat with new-found friends, read a book from our onboard library, browse the art gallery or simply enjoy gazing out across the ocean.

### DAY 22: SORONG, INDONESIA

We arrive at Sorong and prepare for a 10:00am disembarkation. Our crew will be there to help with additional information about charter flights. Guests can opt for a local Sorong tour with our guides who can share stories about its history and culture.

### Please note:

This itinerary is an indication of the destinations we visit and activities on offer. Throughout the expedition we may make changes to the itinerary as necessary to maximise your expeditionary experience. Allowances may be made for seasonal variations, weather, tidal conditions, and any other event that may affect the operation of the vessel.



The Small Cruise Ship Collection

[www.small-cruise-ships.com](http://www.small-cruise-ships.com)

**01432 507 280** (within UK)

[info@small-cruise-ships.com](mailto:info@small-cruise-ships.com) | [small-cruise-ships.com](http://small-cruise-ships.com)





The Small Cruise  
Ship Collection

[www.small-cruise-ships.com](http://www.small-cruise-ships.com)



[small-cruise-ships.com](http://small-cruise-ships.com)

[info@small-cruise-ships.com](mailto:info@small-cruise-ships.com)

## YOUR SHIP: CORAL ADVENTURER

**YOUR SHIP:** Coral Adventurer

**VESSEL TYPE:**

**LENGTH:**

**PASSENGER CAPACITY:**

**BUILT/REFURBISHED:**

Launched in 2018 with her maiden voyage in 2019, Coral Adventurer has been designed and built to take you closer to unspoilt vistas in comfort, style and safety. A culmination of two years of design and three decades of passion for expedition cruising. BIGGER IS NOT BETTER At a time when cruise ships get larger and glitzier, we remain stubbornly compact and intimate. Our ships are designed to take you to unspoilt destinations not accessible to large ships. We want you to have the luxury of space, dine with whom you please, or find your quiet corner on deck. So Coral Adventurer has just 60 spacious cabins. This preserves the intimate atmosphere we are known for without sacrificing the stability and comfort of a true ocean going vessel. BUILT FOR DISCOVERY The Coral Adventurer features the trademark dual 'Xplorer' tenders cradled on a hydraulic platform slung off the back of the ship, enabling our guests to go ashore in comfort and ease. The shallow draft of the ship enables us to go closer to shore than larger ships. Together with a renowned expedition team, this new ship will offer the most advanced expedition capabilities of any small ship afloat. BUILT FOR COMFORT With active stabilisers dampening sea motion, mostly balcony cabins, and interiors designed with the colours and

textures of tropical Queensland, the Coral Adventurer is a comfortable ship. She features promenade decks, generous communal areas that accommodate all guests, a passenger elevator, and an open kitchen where you can observe our chefs whip up small batch cuisine from locally sourced ingredients. BUILT FOR PERSONAL SERVICE The Coral Adventurer will continue a proud tradition of Australian flagged vessels with friendly and professional Australian crew. The onboard atmosphere remains refreshingly informal and intimate. Take your seat at our bridge lounge, chat with the captain at your leisure or accompany our chefs on a market tour. Food and wine features Single seating dining area with communal 'wine table' finished with Australian stone; serving buffet breakfast and lunch, and multi-course table d'hote dinners Showcase galley visible to guests for fresh small-batch cuisine featuring Australian produce Multiple indoor and outdoor bars, including the Explorer bar on the sundeck for sunset drinks with 180 degree views Curated wine cellar featuring modestly priced boutique wines for daily drinking and exceptional vintage Australian reds. Guest comfort All outside guest cabins with en-suite bathrooms; majority have private balcony Active stabilisers to dampen sea motion Gym equipped with elliptical trainers and treadmills Passenger elevator Wi-Fi available in all



The Small Cruise  
Ship Collection

[www.small-cruise-ships.com](http://www.small-cruise-ships.com)

01432 507 280 (within UK)

[info@small-cruise-ships.com](mailto:info@small-cruise-ships.com) | [small-cruise-ships.com](http://small-cruise-ships.com)



# The Small Cruise Ship Collection

[www.small-cruise-ships.com](http://www.small-cruise-ships.com)



[small-cruise-ships.com](http://small-cruise-ships.com)

[info@small-cruise-ships.com](mailto:info@small-cruise-ships.com)



guest areas



The Small Cruise Ship Collection

[www.small-cruise-ships.com](http://www.small-cruise-ships.com)

**01432 507 280** (within UK)

[info@small-cruise-ships.com](mailto:info@small-cruise-ships.com) | [small-cruise-ships.com](http://small-cruise-ships.com)





# The Small Cruise Ship Collection

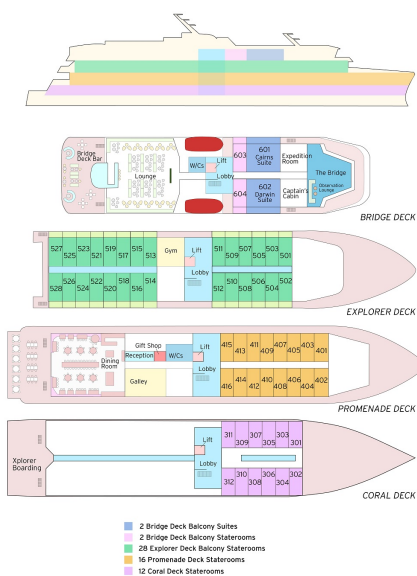
[www.small-cruise-ships.com](http://www.small-cruise-ships.com)



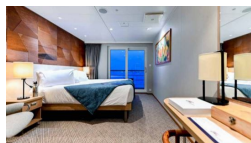
[small-cruise-ships.com](http://small-cruise-ships.com)

[info@small-cruise-ships.com](mailto:info@small-cruise-ships.com)

## INSIDE YOUR SHIP



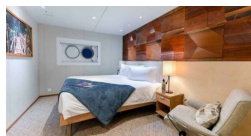
BRIDGE DECK BALCONY STATEROOM



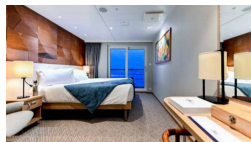
BRIDGE DECK BALCONY SUITE



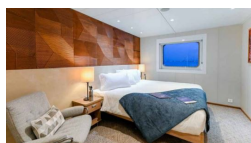
CORAL DECK STATEROOM



EXPLORER DECK BALCONY STATEROOM



PROMENADE DECK STATEROOM



The Small Cruise Ship Collection

[www.small-cruise-ships.com](http://www.small-cruise-ships.com)

01432 507 280 (within UK)

[info@small-cruise-ships.com](mailto:info@small-cruise-ships.com) | [small-cruise-ships.com](http://small-cruise-ships.com)





## The Small Cruise Ship Collection

[www.small-cruise-ships.com](http://www.small-cruise-ships.com)



[small-cruise-ships.com](http://small-cruise-ships.com)

[info@small-cruise-ships.com](mailto:info@small-cruise-ships.com)

## PRICING

14-Feb-2026 to 07-Mar-2026

PROMENADE DECK STATEROOM	£15606 GBP pp
EXPLORER DECK BALCONY STATEROOM	£20094 GBP pp
BRIDGE DECK BALCONY SUITE	£27489 GBP pp
BRIDGE DECK BALCONY STATEROOM	£21777 GBP pp
CORAL DECK STATEROOM	£13209 GBP pp



The Small Cruise Ship Collection

[www.small-cruise-ships.com](http://www.small-cruise-ships.com)

01432 507 280 (within UK)

[info@small-cruise-ships.com](mailto:info@small-cruise-ships.com) | [small-cruise-ships.com](http://small-cruise-ships.com)