

The Small Cruise Ship Collection

www.small-cruise-ships.com

small-cruise-ships.com

info@small-cruise-ships.com

THROUGH THE AEGEAN - GREEK ISLANDS SAILING CRUISE FROM ATHENS

Embark on a captivating journey through Greece, starting and ending in Athens. Sail through the Peloponnese and the Cyclades, exploring the ancient fortress town of Monemvasia, and the lesser-known, picturesque islands of Milos and Paros. Experience the unique charm of small harbor towns and enjoy ample time for shore excursions. The itinerary also includes a visit to the exclusive, car-free island of Spetses, offering a blend of rich history, serene beauty, and sunny days under full sails.



ITINERARY

Day 1 Athens (Piraeus), Greece

Departure 7:00 pm

"A ship will come...", declared the singer Melina Mercouri to the port of Piraeus. Later, as Greek Minister for Culture, she made Athens the first European Capital of Culture in 1985. The city is considered the birthplace of Europe, of philosophy and of

The Small Cruise Ship Collection
www.small-cruise-ships.com

01432 507 280 (within UK)

info@small-cruise-ships.com | small-cruise-ships.com



The Small Cruise Ship Collection

www.small-cruise-ships.com

small-cruise-ships.com

info@small-cruise-ships.com

democracy, and is the embodiment of the Olympic ideal. World-famous and a UNESCO World Heritage Site since 1987, its landmark is the magnificent Parthenon temple, lying high up on the Acropolis in all its glory. At the foot of the Acropolis hill is the Plaka, the oldest quarter of Athens, and the world's most modern archaeological museum, the new Acropolis Museum, has been here since 2009.

Day 2 Day under full sails

Climbing the rigging, untying ropes, setting sails - today is all about sailing. Time to lean back and relax in the deck chair and watch the passionate crew hoisting the sails by hand.

Day 3 Nauplio, Peloponnese

Arrival 8:00 am, Departure 7:00 pm

The old town of Nauplio has a picturesque peninsula setting and three Venetian fortresses guard the pretty town. In ancient times, the excavation site of Mycenae, a UNESCO World Heritage Site, was one of the most important towns in Greece. Its legendary king, Agamemnon, has a large role in Homer's Iliad. The palace grounds were surrounded by a cyclopean stone wall. Now you can only gain entrance through the famous Lion Gate. In Epidaurus, also protected by UNESCO, the impressive 14,000-seat theatre is one of the most important buildings in this archaeological site.

Day 4 Monemvasia, Peloponnese

Arrival 8:00 am, Departure 1:30 pm

The little town of Monemvasia nestles closely against a rock that lies just off the coast. This impregnable fortress was an important trading center in Byzantine times. Today it is a retreat for wealthy Athenians who spend their weekends here. Behind its walls you can discover the beautifully restored lower town, where you simply want to drift along the tranquil narrow lanes. This picturesque little town on a rock transports you back in time to the romantic Middle Ages, when it was exceptionally modern and lively.

Day 5 Milos, Cyclades

Arrival 8:00 am, Departure 1:30 pm

The unique character of Milos' landscape was formed by volcanic activity. Hot springs, spectacular cliffs and distinctive rock formations give the various beaches their own individual character. The colors of Milos are most obvious where the water meets the stone and forms the coastline. Minerals have colored the sand and stones and each rock along the coastline seems to glow in a different color. Plaka, the picturesque old capital with its typical dazzling-white houses, is overlooked by a mighty castle which offers a superb view over Adamos Bay and the surrounding islands.

Day 6 Paros, Cyclades



The Small Cruise Ship Collection

www.small-cruise-ships.com

small-cruise-ships.com

info@small-cruise-ships.com

Arrival 8:00 am, Departure 1:30 pm

Are we on Mykonos? Whitewashed facades, blue windows, and doors that sparkle with the pink blossoms of the bougainvillea - with its Aegean postcard idyll, Paros is reminiscent of its famous Cycladic sister at first glance. A second glance, however, quickly reveals the differences: no crowds, no over-the-top party scene - Paros relies on gentle tourism and has therefore been able to retain much of its original charm. Besides the pretty main towns of Parikia and Naoussa and the fabulous island beaches, the wild hinterland with its traditional villages and monasteries is also worth a trip.

Day 7 Spetses, Saronic Islands

Arrival 8:00 am, Departure 1:30 pm

Exclusive, noble, traditional: Far away from mass tourism, a small, relaxed island with beautiful patrician houses basks in the turquoise waters of the Aegean Sea. Wealthy Athenians like to spend their vacation days on Spetses - and this is evident on the well-kept Saronic Island. Lush flower gardens adorn the historic shipping villas, chic cafes line the old harbor, and horse-drawn carriages roll by with aristocratic elegance on the car-free streets. On Spetses, it's worth taking a look down: Here, colorful pebble mosaics adorn the streets, and many a visitor gets a kick out of finding the prettiest one.

Day 8 Athens (Piraeus), Greece

Arrival 6:00 am

"A ship will come...", declared the singer Melina Mercouri to the port of Piraeus. Later, as Greek Minister for Culture, she made Athens the first European Capital of Culture in 1985. The city is considered the birthplace of Europe, of philosophy and of democracy, and is the embodiment of the Olympic ideal. World-famous and a UNESCO World Heritage Site since 1987, its landmark is the magnificent Parthenon temple, lying high up on the Acropolis in all its glory. At the foot of the Acropolis hill is the Plaka, the oldest quarter of Athens, and the world's most modern archaeological museum, the new Acropolis Museum, has been here since 2009.

Please note:

Itineraries are subject to change.

The Small Cruise
Ship Collection

www.small-cruise-ships.com

01432 507 280 (within UK)

info@small-cruise-ships.com | small-cruise-ships.com

The Small Cruise Ship Collection

www.small-cruise-ships.com

small-cruise-ships.com

info@small-cruise-ships.com

YOUR SHIP: SEA CLOUD II

YOUR SHIP:	Sea Cloud II
VESSEL TYPE:	Tall Ship (Sailing)
LENGTH:	105 metres
PASSENGER CAPACITY:	96
BUILT/REFURBISHED:	2001

Launched in 2001, Sea Cloud II is a stunning vessel, built along traditional lines, but offering deluxe accommodation. She combines timeless elegance of sailing ships of the past with the highest safety standards and the luxurious comfort of modern cruise ships. Just like her legendary sister ship Sea Cloud, the 29,600 square feet of sails is set by hand which is a truly magical sight. Built to accommodate 96 passengers in five star luxury, she offers a range of beautifully appointed suites and cabins which are furnished with great style. All accommodations have outside views and the bathrooms, in light marble, are unusually spacious and extremely comfortable. The finest, carefully chosen fabrics, combined with leather, rattan and other materials, brass and gold, precious woods and marble together create an impressive ensemble. No expense has been spared to create a sympathetic ambience in both the accommodations and public areas and this is reflected throughout the vessel. Public areas include an elegant lounge, library, fitness centre, boutique, lido bar and hospital. The single sitting dining room is airy and modern and the quality of the cuisine and service will be to the highest of standards, as one would expect on a Sea Cloud cruise. Relax on the Lido deck and experience the natural

grandeur of travelling under sail, rekindling memories of a



bygone age.

The Small Cruise Ship Collection
www.small-cruise-ships.com

01432 507 280 (within UK)

info@small-cruise-ships.com | small-cruise-ships.com

The Small Cruise Ship Collection

www.small-cruise-ships.com

small-cruise-ships.com

info@small-cruise-ships.com

INSIDE YOUR SHIP



Please note that category F cabins have one lower and one upper berth bed

Key
 Cat A Cat B Cat C
 Cat D Cat E Cat F

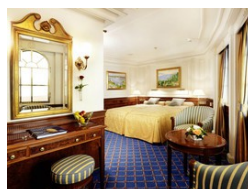
Category A. From



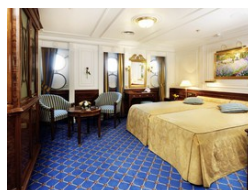
Category B. From



Category C. From



Category D. From



Category E. From

Category F Upper/Lower Beds. From



The Small Cruise Ship Collection

www.small-cruise-ships.com

small-cruise-ships.com

info@small-cruise-ships.com

PRICING

16-Aug-2025 to 23-Aug-2025

GTU Double Cabin. From	£3702 GBP pp
Category F Upper/Lower Beds. From	£4033 GBP pp
Category E. From	£4662 GBP pp
Category D. From	£5181 GBP pp
Category C. From	£5478 GBP pp
Category B. From	£6796 GBP pp
Category A. From	£7561 GBP pp

30-Aug-2025 to 06-Sep-2025

GTU Double Cabin. From	£3702 GBP pp
Category F Upper/Lower Beds. From	£4033 GBP pp
Category E. From	£4662 GBP pp
Category D. From	£5181 GBP pp
Category C. From	£5478 GBP pp
Category B. From	£6456 GBP pp
Category A. From	£7178 GBP pp

17-Jul-2026 to 24-Jul-2026

Category F Upper/Lower Beds. From	£4190 GBP pp
Category E. From	£4836 GBP pp
Category D. From	£5644 GBP pp
Category C. From	£5806 GBP pp
Category B. From	£6452 GBP pp
Category A. From	£7420 GBP pp

24-Jul-2026 to 31-Jul-2026

Category F Upper/Lower Beds. From	£4190 GBP pp
Category E. From	£4836 GBP pp
Category D. From	£5644 GBP pp
Category C. From	£5806 GBP pp
Category B. From	£6452 GBP pp
Category A. From	£7420 GBP pp

31-Jul-2026 to 07-Aug-2026

Category F Upper/Lower Beds. From	£4190 GBP pp
Category E. From	£4836 GBP pp
Category D. From	£5644 GBP pp
Category C. From	£5806 GBP pp
Category B. From	£6452 GBP pp
Category A. From	£7420 GBP pp