

The Small Cruise Ship Collection

www.small-cruise-ships.com

small-cruise-ships.com

info@small-cruise-ships.com

THE WONDERS OF THE INDONESIAN ARCHIPELAGO - FROM BALI TO DARWIN

Set off on an expedition from Bali, venturing through East Indonesia's enchanting landscapes, and concluding in Darwin. This journey is an exploration of Indonesia's rich cultural tapestry, offering insights into its unique highlights. Experience the blend of cultural treasures and natural wonders as you travel, promising an adventure that goes beyond the ordinary. We invite you to immerse yourself in the diverse beauty and heritage of Indonesia.



ITINERARY

DAY 1 Embarkation | Benoa, Bali, Indonesia

Bali is known for its forested volcanic mountains, iconic rice paddies and beaches. The island is home to many striking Hindu temples, such as the cliff side Uluwatu Temple, Tanah Lot, Goa Gajah in Ubud and the spectacular Ulun Danu Beratan Temple in Bedugul. The beachside strip from Kuta to Legian offer lively bars and a multitude of dining choices, while Seminyak, Sanur and Nusa Dua are popular resort areas.

The Small Cruise Ship Collection
www.small-cruise-ships.com

01432 507 280 (within UK)

info@small-cruise-ships.com | small-cruise-ships.com



The Small Cruise Ship Collection

www.small-cruise-ships.com

small-cruise-ships.com

info@small-cruise-ships.com

PASPALEY PEARL will be alongside at Benoa Harbour, Bali.

DAY 2 Badas, Sumbawa Besar. West Nusa Tenggara, Indonesia

The port of Badas is part of the greater township of Sumbawa Besar, on the island of Sumbawa. Like most of Sumbawa, the people hold their culture strong as a major part of their identity. The island has a strong influence from the Makassarese of Sulawesi, who over the centuries have introduced a lot of their culture into Sumbawa.

DAY 3 Saleh Bay, Sumbawa Besar. West Nusa Tenggara, Indonesia

Enclosed by Moyo Island and the imposing Tembora Peninsula, the serene Saleh Bay is far from the regular tourist trail. In 2017, Conservation International assisted in the development of eco-tourism ventures focused on swimming with the world's largest fish. Still in its infancy, visitors can swim with the whale sharks in the clear calm waters of Saleh Bay all year round. In addition to the presence of these majestic marine creatures, numerous uninhabited islands, fringed by coral reefs are scattered across the azure waters of the bay.

DAYS 4-5 Komodo National Park. East Nusa Tenggara, Indonesia

Komodo National Park was granted UNESCO World Heritage status in 1989. With one of the lowest rainfalls in Indonesia, its climate provides the perfect habitat for the exotic wildlife of Wallacea. Dense monsoon forests in the protected gullies give way to open grassland savannas, studded with prickly Ziziphus trees providing the perfect habitat for the infamous Komodo dragon. Originally designed to provide refuge for the Komodo dragon, the park now protects one of the richest marine ecosystems. This has resulted in an abundance of world class snorkelling and diving locations available to the traveller.

DAY 6 Sumba. East Nusa Tenggara. Indonesia

The island of Sumba is home to an ancient animistic culture that has resisted the outside influence of Christianity, Hinduism or Islam. The traditional society's still practice their animist beliefs, known as Merapu that influence their daily lives. Stone tombs of ancestors can be found amongst the unique Sumba style houses, featuring a high roof reaching for the heavens which allow the local villagers to communicate with their spirit-gods. Sumba is well known for its high quality handmade ikat fabrics. The process of dying and weaving ikat is labour-intensive, and one piece can take many months to prepare.

DAY 7 Savu. East Nusa Tenggara, Indonesia



The Small Cruise Ship Collection

www.small-cruise-ships.com

small-cruise-ships.com

info@small-cruise-ships.com

DAYS 9-10 Sea Days

The remote island of Savu (Sawu) is the largest of three islands, situated midway between Sumba and Rote, west of Timor. During colonial times, the islands had little to no interest from European traders, or neighbouring kingdoms, resulting in minimal outside influence until the late-20th century. An ancient megalithic ceremonial site is still evident at the village of Namata. Savu is known for its traditional hand-woven textiles, which are highly valued for their intricate patterns and craftsmanship. These textiles play a significant role in the cultural life of the Savunese people, and are often used in ceremonies and rituals.

DAY 8 Kupang, West Timor. East Nusa Tenggara. Indonesia

Perched on the southwestern corner of the island of Timor, lies the provincial capital of Kupang. Formerly known as Koepang, it is the largest city and port on the island of Timor with a population of just under 500,000 people. It was an important port and trading post during the Portuguese and Dutch colonial eras, and many ruins and remnants of the colonial presence remain today. During the 20th century, the city was used for landing and refuelling by long-distance flights between Europe and Australia. It was under Japanese occupation between 1942 and 1945, and much of the old town was destroyed by Allied bombing during that time.

A couple of days spent at sea provides an ideal opportunity for contemplation, allowing you to reminisce about the extraordinary moments shared with fellow adventurers. Take a moment for yourself to savour the rare tranquillity of the open sea and connect with your expedition team to discover exciting upcoming adventures on the horizon.

DAY 11 Disembarkation | Darwin, Northern Territory

Darwin is the largest city in the sparsely populated Northern Territory, with a population of 136,245. It is the smallest and most northerly of the Australian capital cities, and acts as the Top End's regional centre. Darwin was originally a pioneer outpost.

PASPALEY PEARL will be alongside the wharf at the Darwin Cruise ship terminal located at Fort Hill Wharf.

Please note:

Itineraries are subject to change.

The Small Cruise Ship Collection

www.small-cruise-ships.com

01432 507 280 (within UK)

info@small-cruise-ships.com | small-cruise-ships.com



The Small Cruise Ship Collection

www.small-cruise-ships.com

small-cruise-ships.com

info@small-cruise-ships.com

YOUR SHIP: PASPALEY PEARL

YOUR SHIP: Paspaley Pearl

VESSEL TYPE: Yacht

LENGTH: 53 meters

PASSENGER CAPACITY: 30

BUILT/REFURBISHED:

Built / Renovated: 2021 / 2024 Designed to feel like your home away from home Marrying PASPALEY's heritage of over 80 years in the Kimberley and Northern Australia with PONANT's 35-year history of luxury expedition travel, PASPALEY PEARL emerges as the embodiment of comfort and adventure. Featuring 15 staterooms and suites and hosting a maximum of 30 guests per voyage, PASPALEY PEARL emerges as the newest and only boutique expedition motor yacht in the Kimberley with private balconies. The perfect place to relax while exploring _Main Dining, Lounge and Bar_ Nestled on the Ocean Deck is our main dining area, lounge, and bar. As our skilled chefs craft your locally-inspired dinner, take a moment for a pre-dinner drink before being spoiled with the finest produce Australia has to offer. If you're interested in exploring some of PASPALEY's exquisite offerings, you'll be delighted by their showcase of the world's most beautiful pearls, available for purchase as a cherished memento of your time on board. _Outdoor Dining, Lounge and Bar_ When journeying through the tropics, immersing yourself in the outdoors becomes essential. Indulge in breakfast and lunch daily within a relaxed yet refined setting. With two expansive dining tables and abundant lounges, relish

the idea of dining amidst the natural surroundings you explore. Craving a refreshing drink after a day of exploration? Our friendly staff at the Outdoor Bar have you covered. The Outdoor Lounge doubles as the perfect space for afternoon briefings with your expedition team, ensuring you receive all the information needed for the following day's adventure. _Sun Deck Lounge and Jacuzzi_ Bask in the sunshine on the Sun Deck, furnished with sun beds, lounges, and an 8-person jacuzzi. Whether you prefer reading a book under the shelter of the protective shade cloth or engaging in conversations with newfound friends, the Sun Deck promises a haven of pure relaxation. _Sunset Lounge_ Located ahead of the bridge, you can savour panoramic views rivaling those of the captain at the Sunset Lounge. Order a drink from one of the bars downstairs and relax as you witness some of the most breathtaking sunsets you've ever seen.

The Small Cruise Ship Collection

www.small-cruise-ships.com

small-cruise-ships.com

info@small-cruise-ships.com

INSIDE YOUR SHIP

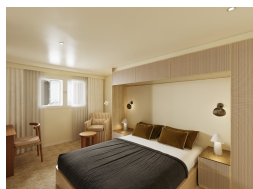
Horizon Suite



Ocean Stateroom



Ocean Twin Stateroom



Pearl Suite





The Small Cruise Ship Collection

www.small-cruise-ships.com

small-cruise-ships.com

info@small-cruise-ships.com

PRICING

25-Mar-2025 to 04-Apr-2025

Ocean Twin Stateroom	£9099 GBP pp
Horizon Suite	£11959 GBP pp
Pearl Suite	£14299 GBP pp
Ocean Stateroom	£9879 GBP pp