



The Small Cruise
Ship Collection

www.small-cruise-ships.com

small-cruise-ships.com

info@small-cruise-ships.com

THE TEMPERAMENT OF SOUTH AMERICA LUXURY CRUISE

Discover vibrant metropolises and Chile's fascinating fjords up close from on board. Accompany the EUROPA on its circumnavigation of Cape Horn from highlight to highlight. A cruise to the superlatives of South America awaits you, which leaves nothing to be desired.



ITINERARY

Day 1 Rio de Janeiro/Brazil, Overnight stay on board

Day 2 Rio de Janeiro, departure 19.00 hrs

The beauty of Rio de Janeiro is as diverse as it is fascinating. From the world-famous beaches of Copacabana and Ipanema, the majestic Sugarloaf Mountain and the giant statue of Christ the Redeemer on Mount Corcovado to the colourful samba dances and carnival celebrations - Rio is inspiring simply everywhere. In the midst of the tropical metropolis, there are

The Small Cruise
Ship Collection

www.small-cruise-ships.com

01432 507 280 (within UK)

info@small-cruise-ships.com | small-cruise-ships.com



The Small Cruise Ship Collection

www.small-cruise-ships.com



small-cruise-ships.com

info@small-cruise-ships.com

over 50 museums that give visitors interesting insights into Brazil's rich culture and history. Rio is a samba stronghold even outside of the carnival: the intoxicating rhythms of the country, a symbol of the Brazilian love of life, can be heard in numerous clubs and bars.

Days 3 - 5 Relaxation at sea

Day 6 Montevideo/Uruguay, 08.00 - 24.00 hrs

A laid-back attitude to life and a high quality of living make Montevideo, the capital of Uruguay, one of the most charming cities in South America. The cosy city, which has around 1.3 million inhabitants, stands in contrast to restless megacities like Rio de Janeiro or Buenos Aires. Its many little streets have museums that are worth visiting, such as the Carnival Museum and the historical National Museum. At the Plaza de la Constitucion, the cathedral and lovely cafes invite you to while away some time. Barbecue lovers will enjoy parrilla culture at the Mercado del Puerto, while those who love fine wine can discover the local wineries rivalling those of Argentina. Montevideo combines cultural experiences with a laid-back atmosphere - perfect for relaxing and unwinding.

Day 7 Buenos Aires/Argentina, arrival 13.00 hrs

Buenos Aires, the home of tango and a paradise for travellers who wish to enjoy the joie de vivre of South America, lies on the banks of the Rio de la Plata. Modern influences meet old traditions here, and music is everywhere, filling the streets and squares. A night on the dance floor often begins in the afternoon and continues well into the night, when locals and visitors celebrate the passion of tango in cafes, bars and at shows. Football is another Argentinian passion - the La Bombonera stadium, home of the Boca Juniors, is a must-see for fans and

offers insights into the country's football enthusiasm. Buenos Aires captivates every visitor with its energy, music and culture.

Day 8 Buenos Aires, departure 18.00 hrs

Days 9 - 10 Relaxation at sea

Day 11 Puerto Madryn/Argentina, 07.00 - 20.00 hrs

A bay shaped like a natural amphitheatre, surrounded by desert-like hills - that's Puerto Madryn on the Atlantic coast of Patagonia. Golfo Nuevo offers excellent sandy beaches and clear water, ideal for swimming and diving. Animal lovers appreciate the proximity to Peninsula Valdes, where penguins, sea lions and elephant seals can be observed. With a bit of luck, whales, including the endangered southern right whales and orcas, can also be spotted.

Days 12 - 13 Relaxation at sea

Day 14 Cruising off Cape Horn/Chile, 09.00 - 15.00 hrs

Where the Atlantic meets the Pacific lies the legendary headland of Cape Horn, the southernmost point of South America. This remote and often storm-swept region has always fascinated explorers and adventurers. The barren cliffs of Hornos Island, shaped by the forces of nature, rise far out into the churning sea. A stylised albatross commemorates the many sailors who lost their lives during the extremely difficult passage of the cape. Today, Cape Horn attracts visitors with its rugged beauty and unique, untouched nature - a place that lives up to the myth and romance of past seafarers.

Day 15 Ushuaia/Argentina, arrival 01.30 hrs



The Small Cruise Ship Collection

www.small-cruise-ships.com

01432 507 280 (within UK)

info@small-cruise-ships.com | small-cruise-ships.com



The Small Cruise Ship Collection

www.small-cruise-ships.com



small-cruise-ships.com

info@small-cruise-ships.com

Ushuaia lies at the far end of the world - framed by the snow-capped Andes and the Beagle Channel and surrounded by the islands of Tierra del Fuego. The impressive location of Argentina's southernmost city offers breathtaking natural experiences. One highlight is Martial Glacier, which offers unforgettable views of the surrounding area. The impressive Tierra del Fuego National Park can be easily reached by the Tren del Fin del Mundo ("train at the end of the world"), a charming narrow-gauge railway that runs through the unspoilt hinterland.

Day 16 Ushuaia, departure 06.00 hrs Beagle Channel/Cruising off the Garibaldi Glacier/Chile

Day 17 Punta Arenas/Chile, 07.00 - 23.00 hrs

Punta Arenas, a city full of history and cultural diversity, is located in southern Patagonia on the Strait of Magellan. Founded as a penal colony, it developed into a key harbour thanks to its location on an important trade route and the discovery of raw materials. Today, Punta Arenas delights visitors with the multitude of cultural influences that are reflected in its cityscape. The Magellan Monument on the Plaza de Armas, the historic cemetery and the nearby fjords are just a few of the highlights. Punta Arenas is also an ideal starting point for excursions to the Torres del Paine National Park.

Day 18 Relaxation at sea - Chilean fjords

Day 19 Cruising off the Pio XI Glacier (Seno Eyre)/Chile, 07.00 - 12.00 hrs

The Pio XI Glacier, embedded in the Chilean Andes, is an unrivalled natural treasure. As the largest inland glacier in the southern hemisphere outside the Antarctic, it covers around 1,265 km² (488 mi²) and is actually growing by around 2 m (6.6 ft) a day. A visit offers spectacular views of the mighty

icebergs. The sheer size and power of the Pio XI Glacier is profoundly impressive and demonstrates the imposing natural force of this remote area in the Bernardo O'Higgins National Park.

Day 20 Relaxation at sea - Chilean fjords

Day 21 Puerto Montt/Chile, 07.00 - 19.00 hrs

The view of the snow-capped volcanoes of the Los Lagos region is stunning - and Puerto Montt is an ideal starting point for travelling through this impressive Patagonian landscape. The Chilean "Lakes District" boasts deep-blue mountain lakes, lush forests and the imposing Osorno volcano that towers over Lake Llanquihue. The cultural influence of many German settlers who came to Puerto Montt in the 19th century is still reflected in the town today. Regional products and culinary specialities can be discovered at the arts and crafts market and the neighbouring fish market.

Day 22 Relaxation at sea

Day 23 Valparaiso/Chile, arrival 17.00 hrs Overnight stay on board

Valparaiso extends over around 40 hills, which characterise the unmistakable cityscape with its stairways and steep historic cable cars - these special "ascensores" connect the lively districts decorated with street art. Chile's most important harbour once attracted European windjammers and today artists, writers and musicians come, who love the charming mix of colonial and modern architecture. The unique flair of the coastal city immediately casts a spell on visitors.

Day 24 Valparaiso

Please note:



The Small Cruise Ship Collection

www.small-cruise-ships.com

01432 507 280 (within UK)

info@small-cruise-ships.com | small-cruise-ships.com



The Small Cruise Ship Collection

www.small-cruise-ships.com



small-cruise-ships.com

info@small-cruise-ships.com

Itineraries are subject to change.



The Small Cruise
Ship Collection

www.small-cruise-ships.com

01432 507 280 (within UK)

info@small-cruise-ships.com | small-cruise-ships.com



The Small Cruise
Ship Collection

www.small-cruise-ships.com



small-cruise-ships.com

info@small-cruise-ships.com

YOUR SHIP: EUROPA

YOUR SHIP: Europa

VESSEL TYPE:

LENGTH:

PASSENGER CAPACITY:

BUILT/REFURBISHED:

Extensive space for a maximum of 400 guests A crew-to-guest ratio of almost one to one Outside suites only, most with a veranda Five restaurants for the ultimate in culinary indulgence - including THE GLOBE by three-star chef Kevin Fehling Top-class entertainment: experience international artists and experts live on board EUROPA Refresh: new fitness and wellness concepts for even more well-being MS EUROPA is an award-winning luxury cruise ship renowned for setting global standards in refined small-ship cruising. Accommodating a maximum of just 400 guests, the ship offers an intimate and highly personalised experience, supported by an almost one-to-one crew-to-guest ratio. Designed around the concept of casual luxury, EUROPA combines spacious surroundings, attentive service, and elegant all-suite accommodation, with all suites featuring ocean views and most offering private verandas. Onboard, guests can enjoy five exceptional restaurants, including fine dining concepts created in collaboration with acclaimed chefs, alongside world-class entertainment, wellness facilities, and thoughtfully curated enrichment experiences. The ship's smaller size allows access to unique itineraries and exclusive ports beyond the reach of larger vessels, while recent EUROPA Refresh

enhancements have introduced updated fitness and wellness concepts for an even more elevated onboard experience. Blending sophistication, comfort, and flexibility, MS EUROPA delivers a truly premium voyage to destinations



worldwide.

The Small Cruise
Ship Collection

www.small-cruise-ships.com

01432 507 280 (within UK)

info@small-cruise-ships.com | small-cruise-ships.com



The Small Cruise
Ship Collection

www.small-cruise-ships.com

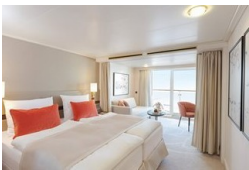


small-cruise-ships.com

info@small-cruise-ships.com

INSIDE YOUR SHIP

Suite with panorama window Veranda Suite Cat. 4-5



Veranda Suite Cat. 6-7



The Small Cruise
Ship Collection
www.small-cruise-ships.com

01432 507 280 (within UK)

info@small-cruise-ships.com | small-cruise-ships.com



The Small Cruise
Ship Collection

www.small-cruise-ships.com



small-cruise-ships.com

info@small-cruise-ships.com

PRICING

25-Jan-2027 to 17-Feb-2027

Suite with panorama window	£13655 GBP pp
Veranda Suite Cat. 4-5	£15219 GBP pp
Veranda Suite Cat. 6-7	£18595 GBP pp



01432 507 280 (within UK)

info@small-cruise-ships.com | small-cruise-ships.com