



THE SOUTHERN GRAND PASSAGE: WORLD'S END TO BUENOS AIRES - ANTARCTICA & SOUTH GEORGIA

The Southern Grand Passage cruise offers an extraordinary journey from the remote wilderness of World's End to the vibrant city of Buenos Aires. This expedition takes you through some of the most dramatic and untouched landscapes at the southern tip of South America. You'll navigate through icy straits, towering glaciers, and windswept islands, all while experiencing the rich natural beauty and unique wildlife of this rugged region. It's a voyage designed for those who crave adventure and discovery in one of the planet's last great frontiers. As you sail northward, the journey blends breathtaking scenery with cultural encounters, culminating in the lively atmosphere of Buenos Aires. This cruise promises a rare blend of exploration and refinement, with expert guides sharing their deep knowledge of the region's history, geography, and ecosystems. Whether you're marveling at penguin colonies or enjoying the vibrant urban life at the journey's end, The Southern Grand Passage offers an unforgettable expedition that connects you deeply with the spirit of the southern hemisphere.

The Small Cruise Ship Collection

www.small-cruise-ships.com

small-cruise-ships.com

info@small-cruise-ships.com



ITINERARY

Days 0 - 1 Pre Cruise & Ushuaia (Argentina)

Charter flights to the port of embarkation/ disembarkation (Longyearbyen, Ushuaia, Kangerlussuaq, Nuuk, Honiara, Jayapura and Sorong)

Group return transfers from airport to cruise port and to the hotel (where included)

One night pre-cruise accommodation with breakfast in a 4/5-star hotel (exemptions apply)

Ushuaia is the gateway to the White Continent. Nestled in the foothills of the snow-capped Martial Range in Argentina's Patagonia region, Ushuaia's colourful streets and mismatched

buildings cascade from the imposing mountains before coming to an abrupt halt at the shores of the Beagle Channel. Often described as 'the End of the World', the city carries the reputation well - the moody weather and dramatic surroundings certainly help.

Days 2 - 3 Day at sea (At Sea)

Days 4 - 6 Antarctic Peninsula (Antarctica)

Among captivating glaciers, majestic icebergs and snowy islands, the Antarctic Peninsula is where most visitors to the White Continent live their Antarctica dream. It's the most accessible part, with scientific bases and incredible scenery, like the photogenic Lemaire Channel. Shore excursions might include Mikkelsen Harbour, where among gentoo penguins, snowy sheathbills and skuas, Antarctic Weddell seals haul out.

Days 7 - 8 Day at sea (At Sea)

Days 9 - 10 South Georgia (South Georgia and the South Sandwich Islands)

Often called the 'Galapagos of the Poles,' South Georgia has a number of landing sites with tens of thousands of King Penguins and gentoo penguins, making up some of the largest populations in the world alongside harrumphing elephant seals. Among its remarkable sites is Grytviken, the historic whaling station where legendary British explorer Ernest Shackleton (1874-1922) is laid to rest.

Days 11 - 12 Day at sea (At Sea)

Day 13 Port Stanley (Falkland Islands)

Anyone familiar with Britain's trademark red post boxes might spot a resemblance in this British outpost. Port Stanley, on East

The Small Cruise Ship Collection

www.small-cruise-ships.com

01432 507 280 (within UK)

info@small-cruise-ships.com | small-cruise-ships.com



The Small Cruise Ship Collection

www.small-cruise-ships.com

small-cruise-ships.com

info@small-cruise-ships.com

Falkland, is the tiny capital of the Falkland Islands and is small enough to get around on foot. The Historic Dockyard Museum is devoted to maritime history and exploration. Magellanic penguins gather on the beach at nearby Gypsy Cove, and sea lions and dolphins frolic in the harbour.

Day 14 Saunders Island (Falkland Islands)

Black-browed albatross grace the skies over this remote Falkland Island, while Commerson's dolphins play in its waters. With a sparse population of people and sheep, the island is also a sanctuary for fur seals, rockhopper penguins, Magellanic penguins and imperial cormorants, nesting amid its cliffs and the impressive Cliff Mountain. Hiking through the moss-covered terrain unveils beautiful wildflowers like pink-petalled Felton's.

Days 15 - 17 Day at sea (At Sea)

Day 18 Buenos Aires (Argentina)

Argentina's cosmopolitan capital, often dubbed 'The Paris of South America,' is a city of diverse neighbourhoods (barrios) and vibrant cafe culture. Each district has its own character - none more so than colourful La Boca, where tango dancers perform in the streets. The handsome district of Recoleta is famous for the cemetery where Eva 'Evita' Peron is buried, while ships dock into the regenerated waterfront barrio Puerto Madero.

Please note:

Itineraries are subject to change.

The Small Cruise
Ship Collection

www.small-cruise-ships.com

01432 507 280 (within UK)

info@small-cruise-ships.com | small-cruise-ships.com



The Small Cruise Ship Collection

www.small-cruise-ships.com

small-cruise-ships.com

info@small-cruise-ships.com

YOUR SHIP: VEGA

YOUR SHIP: Vega

VESSEL TYPE:

LENGTH:

PASSENGER CAPACITY:

BUILT/REFURBISHED:

Launched in 2022, this state of the art ship has been designed to journey to off the beaten path destinations and remote polar regions in style and comfort. The ship incorporates a PC5 ice-strengthened hull combined with extra-large stabilisers to make your journey as smooth as possible. Sophisticated Elegance. We know how important outdoor space is, so our spacious, relaxing public spaces provide wide open, unobstructed views throughout the ship. The destination will always be in view. Your Wellbeing. The safety & happiness of our guests is paramount to our 120-strong crew on board as well as our passionate expedition team who'll be serving up thrilling shore excursions and lasting memories. Cabin Types. Our 76 cabins including 6 suites have all the amenities you will need to feel comfortable including dressing gowns, hairdryers, personal safes and minibars. Our stylish cabins all have desks, a dressing area and comfy seating. En suite bathrooms all feature glass-enclosed rain showers. Wheelchair access Guests who use wheelchairs must bring their own, as we have only a small number of wheelchairs stored onboard for emergencies. To ensure ease of movement on the ship, wheelchairs and mobility aids must be no wider than 65cm. All mobility or medical

equipment brought on board must be capable of being carried safely and must be declared before sailing. To ensure that all guests can safely evacuate during an emergency, guests requiring a wheelchair can only be accommodated in our ADA-accessible cabins. We offer an Oceanview stateroom on Vega which is specifically designed to be completely ADA compliant and have a fully operable wheelchair-access wet unit. Vega has two lifts, serving every passenger deck apart from the Stargazing top deck, which is, therefore, more difficult to access, as are the Aft Marina and Swan's Nest forward observation platform. Also, we don't have special equipment to access the swimming pool, jacuzzi, or sauna. Otherwise, the ship is entirely at your disposal. Many of the expeditions ashore in remote places are by Zodiac. Boarding these boats and returning aboard can present challenges for wheelchair users, as can navigating uneven terrain. These challenges are by no means always insurmountable, though, and our highly experienced crew is trained to provide reliable advice and assistance. They will make every effort to ensure wheelchair-using guests enjoy a memorable experience at each destination. Our general guidance, however, is to recommend wheelchair users travel with a companion for their ease and enjoyment. If you prefer to remain aboard, our panoramic interiors and ample open decks ensure an immersive, intimate experience of your inspiring

The Small Cruise Ship Collection
www.small-cruise-ships.com

01432 507 280 (within UK)

info@small-cruise-ships.com | small-cruise-ships.com



surroundings.

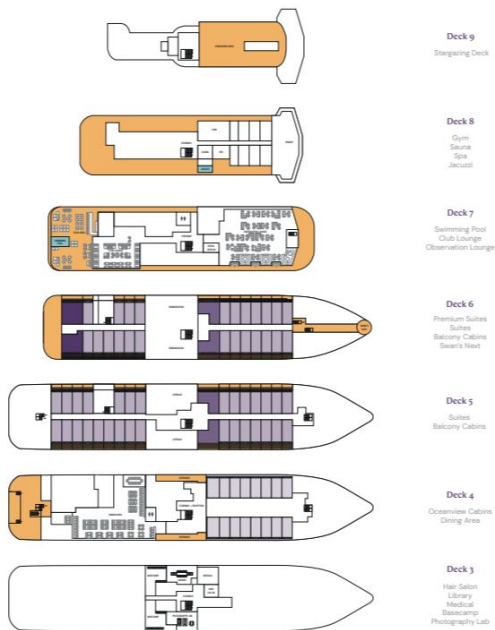
The Small Cruise Ship Collection

www.small-cruise-ships.com

small-cruise-ships.com

info@small-cruise-ships.com

INSIDE YOUR SHIP

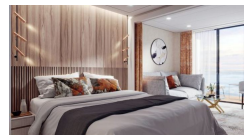


- Deck 9**
Stern Deck
- Deck 8**
Gym
Sauna
Spa
Jacuzzi
- Deck 7**
Swimming Pool
Club Lounge
Observation Lounge
- Deck 6**
Premium Suites
Suites
Balcony Cabins
Beach's Nest
- Deck 5**
Suites
Balcony Cabins
- Deck 4**
Oceanview Cabins
Dining Areas
- Deck 3**
Hair Salon
Library
Medical
Basecamp
Photography Lab

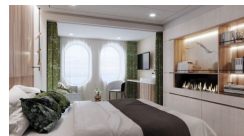
Balcony D5



Balcony M5



Oceanview D4



Oceanview M4



Premium Suite



Suite





The Small Cruise Ship Collection

www.small-cruise-ships.com



small-cruise-ships.com

info@small-cruise-ships.com

PRICING

13-Mar-2028 to 31-Mar-2028

Balcony D5	£12815 GBP pp
Balcony M5	£13405 GBP pp
Premium Suite	£23305 GBP pp
Suite	£20389 GBP pp
Oceanview M4	£12225 GBP pp
Oceanview D4	£11655 GBP pp