

The Small Cruise Ship Collection

www.small-cruise-ships.com

small-cruise-ships.com

info@small-cruise-ships.com

THE RHYTHM OF AFRICA SMALL SHIP CRUISE

Look out for lions, zebras and giraffes in South Africa, roam Madagascar's pristine jungles and enjoy the idyllic scenery of the Seychelles - experience the magic of this multifaceted continent.



ITINERARY

Day 1 Victoria/Mahe/Seychelles, departure 22.00 hrs

Day 2 Praslin/Seychelles, 07.00 - 14.00 hrs

White sandy beaches lined with palm forests, including Anse Georgette and Anse Lazio, are the idyllic picture-perfect spots on Praslin, the second-largest island in the Inner Seychelles. Anse Lazio in particular, surrounded by impressive granite cliffs, is one of the most beautiful beaches in the region. The island's interior is home to Praslin's national park, the UNESCO World

The Small Cruise Ship Collection

www.small-cruise-ships.com

01432 507 280 (within UK)

info@small-cruise-ships.com | small-cruise-ships.com



The Small Cruise Ship Collection

www.small-cruise-ships.com

small-cruise-ships.com

info@small-cruise-ships.com

Heritage Site Vallee de Mai. This is where the ancient Seychelles coco de mer palm trees, some of which are over 1,000 years old, grow. Together with around 43 other species of plant and rare animals like the black parrot, they form a unique natural paradise.

Day 3 Relaxation at sea

Day 4 Antsiranana/Madagascar, 12.00 - 19.00 hrs

Antsiranana, in the far north of Madagascar, was known as Diego Suarez during colonial times. Even today, isolated buildings bear witness to the city's French past. Its lively centre, characterised by East African, Arabic and Asian influences, captivates visitors with its bustling activity and colourfully painted houses. Wide, boulevard-like streets lined with colonial architecture give Antsiranana its special atmosphere. One of the most striking landmarks is the former Hotel des Marines in the far north of the city, which is a popular destination for walks and excursions.

Day 5 Nosy Be/Madagascar, 08.00 - 18.00 hrs Nosy Iranja/Madagascar, arrival 22.00 hrs

Nosy Be, off the north-west coast of Madagascar, beckons you to a Garden of Eden that will enchant you with its diversity. Known as "the fragrant island" due to its ylang-ylang plantations, the island enchants visitors with its palm-fringed beaches, crystal-clear water and vibrant underwater world. In Lokobe Reserve, you'll encounter lemurs, chameleons and rare plant species - an unforgettable experience. The volcanic crater lakes are also worth seeing - for example, at Mont Passot - which offers breathtaking views of the island and the sea.

Day 6 Nosy Iranja/Madagascar, departure 18.00 hrs

The EUROPA will reach Nosy Iranja the evening before. Wake up off one of Madagascar's most spectacular islands: the island is about 40 km (24 mi.) from Nosy Be and consists of two parts connected by a bright white sandbank. At low tide, this natural wonder can be crossed on foot, an experience you will never forget. Also known as the "Island of Turtles", Nosy Iranja is an important nesting site for sea turtles. Turquoise water, powder-white sand and tropical vegetation create an idyllic setting. This dream come true includes a small fishing village, a lighthouse designed by Gustave Eiffel and hidden coves that invite you to relax and stay a while.

Days 7 - 9 Relaxation at sea

Day 10 Maputo/Mozambique, 07.00 - 19.00 hrs

With its varied architecture, Maputo is a true pearl of the Indian Ocean, with about two million people living in this lively capital city in the south of Mozambique. In 1975, the country gained its independence from Portugal, and the city's buildings still stand as testament to its colonial past. The relics on the outlying islands, including impressive ruined fortresses, old churches and historic buildings, are a real highlight for history lovers.

Day 11 Richards Bay/South Africa, arrival 13.00 hrs

Richards Bay is a place where you can experience unspoilt Africa in all its powerful beauty - untamed and full of secrets just waiting to be discovered by you. This is the gateway to the wild nature of the KwaZulu-Natal province, a real paradise for nature lovers. It's impossible to predict which species of African animal will show itself and when, but that's what makes it so exciting and appealing. Follow the call of the wild to South Africa's untamed soul. Pelicans, flamingoes and exotic species such as the hornbill live in the nearby game reserves as well as

The Small Cruise Ship Collection

www.small-cruise-ships.com

01432 507 280 (within UK)

info@small-cruise-ships.com | small-cruise-ships.com



The Small Cruise Ship Collection

www.small-cruise-ships.com

small-cruise-ships.com

info@small-cruise-ships.com

elephants, giraffes, zebras and lions. Which species will you see before you return to the ship? Look forward to some overwhelming experiences and shows of nature.

Day 12 Richards Bay/South Africa, departure 20.00 hrs

Day 13 Durban/South Africa, 07.30 – 20.00 hrs

The lively city of Durban stretches out along the east coast of South Africa. Now the second-largest city in the country and long before the British arrived in 1823, Durban was shaped by its native culture, as shown by the rock carvings in the Drakensberg mountains. It has since grown into an economic hub with the biggest port in the country, the University of KwaZulu-Natal and a wide range of leisure activities. Long sandy beaches attract the surfers and the beach front is a great place for sunbathing. Some of the cultural highlights on offer include the Botanic Gardens, the Old Fort and the Juma Masjid Mosque. Durban brings history together with modern life and South African spirit.

Day 14 Relaxation at sea

Day 15 Gqeberha (formerly Port Elizabeth)/South Africa, 07.30 – 19.00 hrs

Gqeberha, formerly known as Port Elizabeth, offers visitors an inviting atmosphere with its many days of sunshine and long beaches. The coastal resort in the south-east of South Africa was given its new name in 2021, after the isiXhosa name for the Baakens River that flows through the town. Humewood and Summerstrand are particularly popular areas for long walks or watching the sailors and windsurfers. The town is characterised by the brick-red bell tower of the Settlers' Memorial Campanile, commemorating the first settlers in 1820.

Day 16 Relaxation at sea

Day 17 Cape Town/South Africa, arrival 08.30 hrs Overnight stay on board
At the foot of the imposing Table Mountain lies Cape Town, a lively metropolis and one of the most beautiful cities in the world. The charming blend of Victorian villas on Long Street and modern skyscrapers in the financial district are what give the city its unique character. The popular Victoria & Alfred Waterfront with its boutiques, cafes and excellent restaurants will make visitors' hearts soar, both during the day and late into the evening. A cable-car ride to the plateau of Table Mountain promises to be an exciting experience and offers a magnificent view over the city and peninsula. This stretches as far as the Cape of Good Hope, where idyllic beach resorts meet unspoilt nature, making Cape Town an even more unforgettable destination.

Day 18 Cape Town/South Africa

Please note:

* The shore activities are not included in the cruise price and are in the planning stage. Subject to change.

The Small Cruise Ship Collection
www.small-cruise-ships.com

01432 507 280 (within UK)

info@small-cruise-ships.com | small-cruise-ships.com



The Small Cruise Ship Collection

www.small-cruise-ships.com

small-cruise-ships.com

info@small-cruise-ships.com

YOUR SHIP: EUROPA

YOUR SHIP: Europa

VESSEL TYPE:

LENGTH:

PASSENGER CAPACITY:

BUILT/REFURBISHED:

Extensive space for a maximum of 400 guests A crew-to-guest ratio of almost one to one Outside suites only, most with a veranda Five restaurants for the ultimate in culinary indulgence - including THE GLOBE by three-star chef Kevin Fehling Top-class entertainment: experience international artists and experts live on board EUROPA Refresh: new fitness and wellness concepts for even more well-being MS EUROPA is an award-winning luxury cruise ship renowned for setting global standards in refined small-ship cruising. Accommodating a maximum of just 400 guests, the ship offers an intimate and highly personalised experience, supported by an almost one-to-one crew-to-guest ratio. Designed around the concept of casual luxury, EUROPA combines spacious surroundings, attentive service, and elegant all-suite accommodation, with all suites featuring ocean views and most offering private verandas. Onboard, guests can enjoy five exceptional restaurants, including fine dining concepts created in collaboration with acclaimed chefs, alongside world-class entertainment, wellness facilities, and thoughtfully curated enrichment experiences. The ship's smaller size allows access to unique itineraries and exclusive ports beyond the reach of larger vessels, while recent EUROPA Refresh

enhancements have introduced updated fitness and wellness concepts for an even more elevated onboard experience. Blending sophistication, comfort, and flexibility, MS EUROPA delivers a truly premium voyage to destinations



worldwide.

The Small Cruise Ship Collection

www.small-cruise-ships.com

01432 507 280 (within UK)

info@small-cruise-ships.com | small-cruise-ships.com



The Small Cruise
Ship Collection

www.small-cruise-ships.com

small-cruise-ships.com

info@small-cruise-ships.com

INSIDE YOUR SHIP

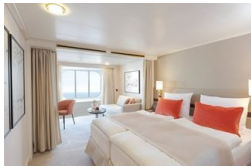
Penthouse Deluxe Suite

Penthouse Grand Suite



SPA Suite

Suite with panorama window



Veranda Suite Cat. 4-5

Veranda Suite Cat. 6-7



The Small Cruise
Ship Collection

www.small-cruise-ships.com

01432 507 280 (within UK)

info@small-cruise-ships.com | small-cruise-ships.com



The Small Cruise
Ship Collection

www.small-cruise-ships.com

small-cruise-ships.com

info@small-cruise-ships.com

PRICING

07-May-2028 to 24-May-2028

Suite with panorama window	£6475 GBP pp
Veranda Suite Cat. 4-5	£9025 GBP pp
Veranda Suite Cat. 6-7	£11695 GBP pp
SPA Suite	£12635 GBP pp
Penthouse Deluxe Suite	£20089 GBP pp
Penthouse Grand Suite	£31859 GBP pp