

The Small Cruise Ship Collection

www.small-cruise-ships.com

small-cruise-ships.com

info@small-cruise-ships.com

THE HOOGLY - INDIA RIVER CRUISE

We are pleased to announce an exciting new expedition on the Hooghly River, that connects Kolkata with the Ganges, starting October 2025. The 18 stateroom Kalaw Pandaw will sail from Kolkata to Baranagar and back on this most enchanting of rivers. This adventure captures the essence of the real India: lovely countryside, magnificent palaces, mystical temples and artisanal villages not to mention very friendly folk. The itinerary also includes two nights in Kolkata allowing passengers two full days sight-seeing in the former capital of the Indian Raj, with its huge museum, 18th century churches, temples, mosques and architectural splendours from the glory days of the Raj. Late check out on the 10th day enables passengers to stay on board, with full board, as most international flights from India go at night. Currently with Indian hotels competing with London or Paris in costliness, a ten-day itinerary such as this offers travellers real value as the cruise becomes a stand-alone Pandaw India trip which means that pre and post cruise hotels in Kolkata are not required. Weather Condition Warning River cruising on the Lower and Upper Ganges can be severely affected by fog during the months of December and January. This may impact the sailing schedules and the planned excursions. While every effort will be made to make up time and include all activities this is not always possible. Similarly temperatures can drop significantly overnight and in the early mornings, though during the day warmer temperatures can be expected. Winter temperatures can be below average with many destinations in Bihar and Uttar Pradesh experiencing long spells of cold.

Roundtrip



ITINERARY

DAY 1 EMBARK KOLKATA

Transfer from your Kolkata hotel or the airport to embark by 1200 for lunch on board followed by city orientation tour with a walk round Dalhousie Square, the prominent Writers' Building the former HQ of the East India Company, and step inside St John's Church with its painting of The Last Supper. Experience the serenity of the Victoria Memorial with a stroll through the

The Small Cruise Ship Collection

www.small-cruise-ships.com

01432 507 280 (within UK)

info@small-cruise-ships.com | small-cruise-ships.com



The Small Cruise Ship Collection

www.small-cruise-ships.com

small-cruise-ships.com

info@small-cruise-ships.com

splendid gardens. Admire the domed white marble hall built in memory of Queen Victoria and discover Victorian memorabilia and British Raj-era paintings. We take lunch in a local restaurant before enjoying the rest of the afternoon at leisure. On return to ship welcome cocktails and briefing.

DAY 2 KOLKATA IMMERSION

Early morning visit to the vibrant flower market, one of Asia's largest. Wind through the mountains of marigolds and jasmine and watch as people buy flowers for temple offerings and prayers. Stroll down to the river to witness a traditional Akhara. Step inside and watch men of all ages practice a traditional form of wrestling known as kushti. We return to ship for breakfast.

Afternoon visit to the Indian Museum and then free time in the nearby New Market before returning to ship for dinner.

DAY 3 KOLKATA - SEREMPORE

Morning visit to the market and sail at noon to cross the Hooghli to the old Danish colony of Serampore, founded in 1676, and visit the tavern, church, and museum. After, cruise past the iconic landmarks of Kolkata: the Tower, Government House, the Temple of Fame, and Flagstaff House.

DAY 4 KALNA

After breakfast, embark on a scenic cruise upstream, arriving at the charming country town of Kalna. Take a rickshaw ride to explore a group of Bengal's most impressive terracotta temples, culminating in a visit to the unique 18th-century Shiva Temple. This remarkable temple is adorned with concentric rings of 108 smaller shrines, creating a truly awe-inspiring sight.

Sail on through the night, mooring near Maitari.

DAY 5 MATIARI

Step ashore in Matiari, a charming riverside village renowned for its brass-working traditions. Engage with the local artisans and witness the fascinating process of crafting intricate brass water pots and other vessels. Time permitting, venture to the historic battlefield of Plassey. Here, in the pivotal year of 1757, Robert Clive, the Commander-in-Chief of the British East India Company, decisively defeated Siraj-ud-Daulah, the last independent Nawab of Bengal, marking a turning point in Indian history.

Moor close to Murshidabad for the night.

DAY 6 MURSHIDABAD

Embark on a walk to the Khushbagh, a peaceful Mughal-style Garden that encloses the tombs of Siraj-ud-Daulah, the last independent Nawab of Bengal, and his family. Continue upstream to witness the grandeur of Hazarduari Palace, an architectural masterpiece built by an English architect in 1837. Explore its opulent interiors, showcasing a fascinating collection of paintings, china, weapons, and other artifacts. Next, visit the magnificent Katra Mosque and the impressive Nashipara Palace, a testament to the wealth and influence of the local merchants during the "White Mughal" era - a period of cultural exchange between English and Indian influences. Finally, we visit Katgola Palace, an exquisite example of Georgian architecture built by wealthy local merchants, further highlighting the unique blend of cultures that flourished during this era.

Moor overnight on the riverbank across from town.

The Small Cruise
Ship Collection
www.small-cruise-ships.com

01432 507 280 (within UK)

info@small-cruise-ships.com | small-cruise-ships.com



The Small Cruise Ship Collection

www.small-cruise-ships.com

small-cruise-ships.com

info@small-cruise-ships.com

DAY 7 BARANAGAR - AJIMGANJ

Sail upstream along the Hoogly River, a picturesque waterway winding through a landscape of lush mustard fields and vibrant mango orchards. Disembark in Baranagar, a charming village, and enjoy a leisurely walk through its serene countryside. Visit three exquisite miniature terracotta temples, dating back to the 17th and 18th centuries, a testament to the region's rich artistic heritage. Continue sailing downstream, stopping at Azimganj to explore the intricately carved Jain temples. This itinerary offers a glimpse into the idyllic rural life of Bengal and its fascinating cultural and architectural heritage.

DAY 8 MAYAPUR

Immerse yourself in the spiritual heart of the Hare Krishna movement at Mayapur, its global headquarters. Explore the magnificent ISKCON temple complex, a modern marvel comparable in size to the Vatican and generously funded by Alfred B. Ford, the great-grandson of automotive pioneer Henry Ford. Interact with devotees and wander through the vibrant pilgrims' bazaar.

DAY 9 CHANDERNAGORE - HOOGLY

Continue sailing downstream before landing to visit the imposing Imambara at Hooghly. With verses from the Quran written on its walls, the Imambara is an opportunity to step back in time and relive a slice of Islamic history in Bengal. Sail past the old Dutch settlement of Chinsura to Chandernagore, a French possession until 1950. Visit the 18th-century church and Dupleix's House, erstwhile Governor-General of French India. Enjoy a TukTuk ride to the Hangseshwari Temple before sailing into the night to a mooring near Kolkata.

DAY 10 DISEMBARKATION KOLKATA

Early morning moor in Kolkata Port and transfer to hotels or airport. Passengers with night flights may stay in their cabins and are at leisure during the day with a lunch served on board and a light supper prior to departure.

Please note:

Itineraries are subject to change.

Weather Condition Warning

River cruising on the Lower and Upper Ganges can be severely affected by fog during the months of December and January. This may impact the sailing schedules and the planned excursions. While every effort will be made to make up time and include all activities this is not always possible. Similarly temperatures can drop significantly overnight and in the early mornings, though during the day warmer temperatures can be expected. Winter temperatures can be below average with many destinations in Bihar and Uttar Pradesh experiencing long spells of cold.

The Small Cruise
Ship Collection

www.small-cruise-ships.com

01432 507 280 (within UK)

info@small-cruise-ships.com | small-cruise-ships.com

The Small Cruise Ship Collection

www.small-cruise-ships.com

small-cruise-ships.com

info@small-cruise-ships.com

YOUR SHIP: KALAW PANDAW

YOUR SHIP:	Kalaw Pandaw
VESSEL TYPE:	River Boat
LENGTH:	57 metres
PASSENGER CAPACITY:	36
BUILT/REFURBISHED:	2014

Kalaw Pandaw is a K-class ship. The K-class dated back to the 1880s and were comprised of stern wheelers designed to reduce draft, their boilers placed in the bow to improve trim. Smaller than the great line steamers of the age, the K-class ships were used on the Chindwin and upper reaches of the Irrawaddy. Where possible we have reused the old IFC names and many of these original K-class ships had fascinating histories, through times of war and peace. **ACCOMMODATION** 8 upper deck, 10 main deck - 170 square feet, finished in teak and brass - AC with individual control - Premium mattresses **WINING & DINING** Bistro style dining room with outside seating and air-conditioning inside - Local master chef heading an experienced international culinary team - Semi-buffet breakfast, semi-buffet lunch, and seated theme dinners - Daily lean & light menu options - Complimentary coffee, water, tea, local soft drinks, local beer, local spirits - Extensive wine list with premium wines - Series of cultural performances, educational talks, cooking classes, and ship tour - Welcome drink on arrival - Welcome cocktail - Farewell reception - Theme dinners - 24hrs hospitality bar - Onboard bakery with daily freshly baked breads and rolls **ON EXCURSIONS** Admissions - Shoe cleaning after

excursions - Bottled drinking water - We give away aluminium water bottles - Cold towel service after excursions - Refreshing drink following excursions - 1st aid trained assistant guide to follow all tours and excursions **SAFETY & SECURITY** All onboard crew is trained and certified as per international marine standards - Fire alarm system in all cabins, public areas and back areas - Fire fighting system in all ship areas - Expert marine superintendant - 24 hrs watch on duty **ONBOARD STAFF** Captain - River Pilot - First Officer - Chief Engineer - 1st Engineer - Electrician - Bosun & nautical crew - Ship manager - Housekeeping - Dining - Bar keeper - Chefs - Local tour guides **PUBLIC SPACES** Guest relation desk - Library with contemporary and classic



literature

The Small Cruise Ship Collection

www.small-cruise-ships.com

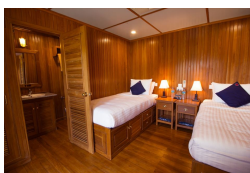
small-cruise-ships.com

info@small-cruise-ships.com

INSIDE YOUR SHIP

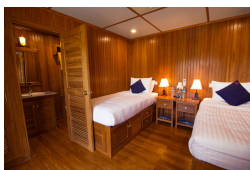
Main Deck Twin Sharing

Main Deck Twin Sharing. From



Upper Deck Twin Sharing

Upper Deck Twin Sharing. From



The Small Cruise Ship Collection

www.small-cruise-ships.com

small-cruise-ships.com

info@small-cruise-ships.com

PRICING

22-Feb-2026 to 03-Mar-2026

Main Deck Twin Sharing. From	£2843 GBP pp
Upper Deck Twin Sharing. From	£3421 GBP pp

04-Mar-2026 to 13-Mar-2026

Main Deck Twin Sharing. From	£2843 GBP pp
Upper Deck Twin Sharing. From	£3421 GBP pp

01-Oct-2026 to 10-Oct-2026

Main Deck Twin Sharing. From	£2369 GBP pp
Upper Deck Twin Sharing. From	£2851 GBP pp

11-Oct-2026 to 20-Oct-2026

Main Deck Twin Sharing	£2843 GBP pp
Upper Deck Twin Sharing	£3421 GBP pp
Main Deck Twin Single Use	£3806 GBP pp
Upper Deck Twin Single Use	£4770 GBP pp

21-Oct-2026 to 30-Oct-2026

Main Deck Twin Sharing. From	£2401 GBP pp
Upper Deck Twin Sharing. From	£2890 GBP pp

09-Jan-2027 to 18-Jan-2027

Main Deck Twin Sharing	£2401 GBP pp
Upper Deck Twin Sharing	£2890 GBP pp
Main Deck Twin Single Use	£3215 GBP pp
Upper Deck Twin Single Use	£4029 GBP pp

19-Jan-2027 to 28-Jan-2027

Main Deck Twin Sharing. From	£2132 GBP pp
Upper Deck Twin Sharing. From	£2566 GBP pp

29-Jan-2027 to 07-Feb-2027

Main Deck Twin Sharing. From	£2369 GBP pp
Upper Deck Twin Sharing. From	£2851 GBP pp

08-Feb-2027 to 17-Feb-2027

Upper Deck Twin Sharing. From	£2734 GBP pp
Main Deck Twin Sharing. From	£2272 GBP pp

18-Feb-2027 to 27-Feb-2027

Upper Deck Twin Sharing. From	£2734 GBP pp
Main Deck Twin Sharing. From	£2272 GBP pp

28-Feb-2027 to 09-Mar-2027

Upper Deck Twin Sharing. From	£2734 GBP pp
Main Deck Twin Sharing. From	£2272 GBP pp

10-Mar-2027 to 19-Mar-2027

Main Deck Twin Sharing. From	£2369 GBP pp
Upper Deck Twin Sharing. From	£2851 GBP pp

18-Dec-2027 to 27-Dec-2027

Main Deck Twin Sharing	£2606 GBP pp
Upper Deck Twin Sharing	£3136 GBP pp
Main Deck Twin Single Use	£3489 GBP pp
Upper Deck Twin Single Use	£4372 GBP pp

28-Dec-2027 to 06-Jan-2028



The Small Cruise Ship Collection

www.small-cruise-ships.com

small-cruise-ships.com

info@small-cruise-ships.com

Main Deck Twin Sharing	£2345 GBP pp
Upper Deck Twin Sharing	£2822 GBP pp
Main Deck Twin Single Use	£3140 GBP pp
Upper Deck Twin Single Use	£3935 GBP pp

The Small Cruise Ship Collection

www.small-cruise-ships.com

small-cruise-ships.com

info@small-cruise-ships.com

PRICING

07-Jan-2028 to 16-Jan-2028

Main Deck Twin Sharing	£2606 GBP pp
Upper Deck Twin Sharing	£3136 GBP pp
Main Deck Twin Single Use	£3489 GBP pp
Upper Deck Twin Single Use	£4372 GBP pp

17-Jan-2028 to 26-Jan-2028

Main Deck Twin Sharing	£2606 GBP pp
Upper Deck Twin Sharing	£3136 GBP pp
Main Deck Twin Single Use	£3489 GBP pp
Upper Deck Twin Single Use	£4372 GBP pp

27-Jan-2028 to 05-Feb-2028

Main Deck Twin Sharing	£2345 GBP pp
Upper Deck Twin Sharing	£2822 GBP pp
Main Deck Twin Single Use	£3140 GBP pp
Upper Deck Twin Single Use	£3935 GBP pp

06-Feb-2028 to 15-Feb-2028

Main Deck Twin Sharing	£2606 GBP pp
Upper Deck Twin Sharing	£3136 GBP pp
Main Deck Twin Single Use	£3489 GBP pp
Upper Deck Twin Single Use	£4372 GBP pp

16-Feb-2028 to 25-Feb-2028

Main Deck Twin Sharing	£2606 GBP pp
Upper Deck Twin Sharing	£3136 GBP pp
Main Deck Twin Single Use	£3489 GBP pp
Upper Deck Twin Single Use	£4372 GBP pp

26-Feb-2028 to 06-Mar-2028

Main Deck Twin Sharing	£2606 GBP pp
Upper Deck Twin Sharing	£3136 GBP pp
Main Deck Twin Single Use	£3489 GBP pp
Upper Deck Twin Single Use	£4372 GBP pp

07-Mar-2028 to 16-Mar-2028

Main Deck Twin Sharing	£2606 GBP pp
Upper Deck Twin Sharing	£3136 GBP pp
Main Deck Twin Single Use	£3489 GBP pp
Upper Deck Twin Single Use	£4372 GBP pp

17-Mar-2028 to 26-Mar-2028

Main Deck Twin Sharing	£2345 GBP pp
Upper Deck Twin Sharing	£2822 GBP pp
Main Deck Twin Single Use	£3140 GBP pp
Upper Deck Twin Single Use	£3935 GBP pp

ADDITIONAL CHARGES:

Port Taxes 85 USD pp