

The Small Cruise Ship Collection

www.small-cruise-ships.com

small-cruise-ships.com

info@small-cruise-ships.com

THE GREAT WHITE CONTINENT EXPEDITION CRUISE

Even today after many decades of exploration, Antarctica remains a world apart, a majestic last frontier surpassing even the most jaded of travellers' expectations. For this magnificent voyage we are working with our long time Swedish associates at PolarQuest who have chartered the 84-passenger Ocean Nova, and we will follow in the footsteps of researchers, pioneers, adventurers and discoverers on an expedition to the sixth continent. It is hard to put into words the sheer grandeur of an Antarctic landscape. This most southern of continents, this desert of ice, is so unique and uncommon to man's experience, that even the most dramatic of photographs pale into insignificance when one is confronted by the sheer magnitude, beauty and wonder of an Antarctic landscape. During this voyage which is timed for the Antarctic spring, there will be the possibility of sighting seven different species of penguin. The spring is mating season for penguins and other species, and you can witness their spectacular displays of courtship ritual, nest building and such antics as stone stealing. This is also the time the pack ice begins to melt resulting in dramatic icebergs and, when in the Falklands and South Georgia, the spring flowers will be in bloom. We sail from Ushuaia in Argentina to the Falkland Islands, a truly enchanting place with a unique character and staggering wildlife. This is the last sanctuary of the elegant albatross which soars gracefully against the blue sky, with colonies of elephant seals basking at the foot of vertiginous cliffs. Our next stop is the remote island of South Georgia, a wildlife haven reputed to have more wildlife per square metre than any other place on the planet. Watching the huge elephant seals fight for their harems and being greeted by hundreds of

thousands of breeding king penguins are truly unbelievable experiences. We then continue to the most remote and isolated continent, Antarctica, where we explore dramatic landscapes with gigantic icebergs, scenic channels and bustling penguin colonies. In between our landings and while at sea, you can pass the time on deck looking for wildlife, attend the series of lectures by members of the



expedition team.

ITINERARY

Day 1 London to Buenos Aires, Argentina.
Fly by scheduled indirect flight.

Day 2 Buenos Aires.

The Small Cruise Ship Collection
www.small-cruise-ships.com

01432 507 280 (within UK)

info@small-cruise-ships.com | small-cruise-ships.com



The Small Cruise Ship Collection

www.small-cruise-ships.com

small-cruise-ships.com

info@small-cruise-ships.com

Arrive and transfer to our hotel for an overnight stay. The remainder of the day is at leisure.

[Day 3 Buenos Aires to Ushuaia.](#)

After breakfast we check out and transfer to the airport for our scheduled flight to Ushuaia. On arrival we transfer to a hotel for an overnight stay and meet our fellow travellers.

[Day 4 Ushuaia.](#)

This morning is free to explore Ushuaia at your own pace. In the afternoon, we embark the Ocean Nova and cruise out through the Beagle Channel. If we are lucky, we might see Magellanic penguins as we sail.

[Day 5 At Sea.](#)

We spend a day at sea, accompanied by seabirds such as petrels, fulmars and albatrosses that gracefully follow our ship. Whales and dolphins may also be seen in the surrounding waters, and the polar experts will begin their exciting lecture programme.

[Day 6 West Falklands.](#)

The plan for today is to explore the western islands of the archipelago, which are isolated and windswept but home to many seabirds including the black-browed albatross. Weather permitting, we will go ashore and explore Saunders Island, a penguin hotspot that is one of the few places on earth where four penguin species nest side by side. Here we can find gentoo, rockhopper, king and Magellanic penguin rookeries as well as nesting black-browed albatross. You can stand on the white sand beach watching the penguins come and go while the striated caracaras patrol overhead.

[Day 7 Stanley, East Falklands.](#)

Today we visit Stanley, the capital of the Falkland Islands. Here, we wander through charming streets lined with small houses and learn how this quiet harbour was once a major port in the 19th century for ships attempting to round the waters of Cape Horn.

[Days 8 & 9 At Sea.](#)

We sail southeast, bound for South Georgia. The anticipation grows, especially as we cross the Antarctic Convergence and notice a dramatic drop in temperature. Shipboard presentations will continue, featuring the fascinating history and abundant wildlife of South Georgia. Wildlife will guide us to the island - keep a lookout in the ocean for whales, seals, and penguins.

[Days 10 to 13 South Georgia.](#)

Majestic mountains, mighty glaciers, and beaches full of king penguins greet us on the island of South Georgia. We arrive in spring, when there are few ships in the vicinity, and the peaks of the dramatic mountain ranges are still snow-covered. For wildlife enthusiasts, South Georgia is a true haven. Hundreds of thousands of penguins gather at places like St Andrew's Bay and Salisbury Plain. Huge elephant seals lounge on beaches, and at this time of year, we may witness dramatic fights for dominance among the males. The island is also home to several other penguin species, including macaroni, gentoo, and chinstrap penguins, along with the playful and feisty fur seals. South Georgia played a significant role in Shackleton's legendary expedition. After his ship Endurance sank, he and his crew crossed the treacherous ocean in an open lifeboat to reach the island. We hope to visit Shackleton's grave at Grytviken, once an active whaling station, now home to a charming museum.

The Small Cruise Ship Collection

www.small-cruise-ships.com

01432 507 280 (within UK)

info@small-cruise-ships.com | small-cruise-ships.com



The Small Cruise Ship Collection

www.small-cruise-ships.com

small-cruise-ships.com

info@small-cruise-ships.com

Days 14 to 16 At Sea.

We now set sail towards the world's most remote continent - Antarctica, faithfully accompanied by many seabirds. The onboard polar experts will continue to fill our minds with heroic stories of the early daredevils who explored Antarctica. We also keep our eyes open for the first iceberg, which could appear on the horizon at any time.

Days 17 to 20 The South Shetland Islands & the Antarctic Peninsula.

This is a true Antarctic expedition cruise, and our exact route over the following days is subject to weather and ice conditions. We hope to go ashore at Elephant Island, where we will learn more about the famous Antarctic adventures of Sir Ernest Shackleton. In 1916, Shackleton and his crew sought refuge on this island after their ship was crushed by pack ice in the Weddell Sea. Following the loss of their ship, they reached Elephant Island after a harrowing ordeal on drifting ice floes. They established a camp at a location they named Point Wild, after Shackleton's commander, Frank Wild. Today, this area is home to nesting chinstrap penguins. We will spend some time cruising among the South Shetland Islands, just off the Antarctic Peninsula. Dazzling wildlife sightings await us on our excursions to some of the islands, including King George, Half Moon, Barrientos, or Livingston. Adelie, chinstrap, and gentoo penguins thrive here, along with several species of seals. Hopefully, we will also have the chance to visit the flooded volcanic caldera of Deception Island. Along the coastline of the South Shetlands, we keep our eyes open for humpback whales foraging for krill. Continuing south along the Antarctic Peninsula, we navigate through vast expanses of pack ice covering large parts of the bays, watching as our experienced officers skilfully steer our ice-strengthened ship. We cruise through labyrinths of icebergs, some of which may be occupied by curious penguins. In good

ice conditions, we hope to set foot on the Antarctic continent at Hope Bay or Paradise Harbour. The scenery here, from the colossal icebergs to the seemingly endless Antarctic ice sheet is truly breathtaking.

Days 21 & 22 Drake Passage.

As we leave this magical place and head across the Drake Passage, you can spend time reflecting on the incredible experiences of the past days. On our approach to the South American continent, it is possible to see whales, dolphins, and seals. Celebrate the conclusion of your Antarctic expedition with a farewell dinner on board.

Day 23 Ushuaia to Buenos Aires.

Disembark this morning and transfer to the airport for our scheduled flight to Buenos Aires. On arrival transfer to our hotel and have the remainder of the day and evening at leisure.

Day 24 Buenos Aires to London.

After breakfast we check out and transfer to the airport for our scheduled indirect flight to London.

Day 25 London.

Arrive today.

Please note:

Itineraries are subject to change.

The Small Cruise Ship Collection

www.small-cruise-ships.com

01432 507 280 (within UK)

info@small-cruise-ships.com | small-cruise-ships.com



The Small Cruise Ship Collection

www.small-cruise-ships.com

small-cruise-ships.com

info@small-cruise-ships.com

YOUR SHIP: OCEAN NOVA

YOUR SHIP: Ocean Nova

VESSEL TYPE:

LENGTH:

PASSENGER CAPACITY:

BUILT/REFURBISHED:

The ice-strengthened 73 metre long expedition ship Ocean Nova was built in Denmark in 1992 with high ice class to serve Greenland's west coast. In 2004 to 2005 she was completely refurbished and has now a career as a small and comfortable expedition ship. The Ocean Nova can accommodate 86 passengers (but is often limited to 65 - 80 for some cruises) in single, double and triple cabins, all with sea-view and private facilities. The double cabins have either twin beds. The triple cabins have upper and lower beds. In your cabin you will also find a desk with chair and ample storage space for clothes and equipment. In the dining room you are treated to delicious meals in between landings and in the panorama lounge you can enjoy a drink with a breathtaking view of the surrounding polar landscape. This is where on board specialists entertain and educate you with lectures on polar biology, history, geology and conservation. There is also a library with panoramic views and a good selection of polar books. On board there is a satellite phone, gym and medical doctor. Passengers are welcome on the bridge around the clock and there is always something to see or search for from the spacious observation decks. The ship has North European officers and there is a friendly and informal

atmosphere on board. Travelling with this small expedition ship offers an entirely different experience and perspective than you can get on a larger and more conventional cruise ship. Cabins are spread over two decks and include cabins for the single traveller, double and triple cabins, all with sea-view and private facilities. The comfortable dining room located on the Upper deck seats all passengers in a single sitting and offers delicious meals with a mixture of table service and buffet. The informal dining arrangement adds to the friendly atmosphere onboard and meals are a great chance to discuss all you have seen with your fellow travellers, and for the expedition team to share their knowledge. With one of the highest ice classes (1B) and a 2000 hp diesel engine, Ocean Nova is a small but sturdy expedition vessel just as at home in the icy waters of Svalbard as she is in a tranquil Scottish loch. The ship has a crew of 34, including North European officers, whose prime concern is your safety as well as ensuring wildlife sightings and weather conditions are maximised. For your safety there are two fully enclosed lifeboats and a medical

The Small Cruise Ship Collection

www.small-cruise-ships.com

01432 507 280 (within UK)

info@small-cruise-ships.com | small-cruise-ships.com



The Small Cruise Ship Collection

www.small-cruise-ships.com



small-cruise-ships.com

info@small-cruise-ships.com



clinic onboard.



The Small Cruise Ship Collection

www.small-cruise-ships.com

01432 507 280 (within UK)

info@small-cruise-ships.com | small-cruise-ships.com

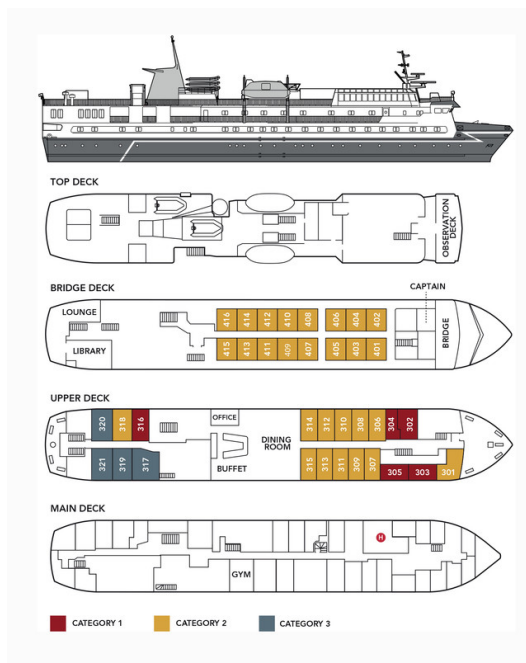
The Small Cruise Ship Collection

www.small-cruise-ships.com

small-cruise-ships.com

info@small-cruise-ships.com

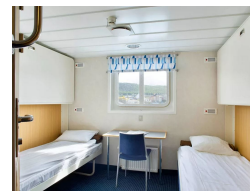
INSIDE YOUR SHIP



Single cabin



Twin cabin





The Small Cruise Ship Collection

www.small-cruise-ships.com



small-cruise-ships.com

info@small-cruise-ships.com

PRICING

26-Oct-2026 to 19-Nov-2026

Twin cabin £15795 GBP pp

Single cabin £21995 GBP pp



The Small Cruise Ship Collection

www.small-cruise-ships.com

01432 507 280 (within UK)

info@small-cruise-ships.com | small-cruise-ships.com