



## THE GEOGRAPHIC NORTH POLE AND THE EAST COAST OF GREENLAND LUXURY EXPEDITION

Push the boundaries of navigation and set sail for 90 degrees North! Aboard Le Commandant Charcot, the rare ship capable of rising to this challenge, you will slowly progress into the heart of the ice floe, in search of the Geographic North Pole. Before reaching the Holy Grail of all polar explorers, you will sail along Spitsbergen, the isolated kingdom of the polar bears and Europe's largest ice cap. On the way back, eastern Greenland will reveal its majestic fjords, its Inuit traditions and, perhaps, its Northern Lights. A rare odyssey, between frozen silence and the untouched grandeur of the boundaries of the world.



### ITINERARY

Day 1 Longyearbyen, Spitsbergen

Longyearbyen is the capital of the Norwegian Svalbard archipelago, located on Svalbard's main island, and is the northernmost territorial capital on the planet. With winter temperatures dropping to below 40°C, the landscapes of this mining town are simply breathtaking. The glaciers, the mountains stretching as far as the eye can see and the untouched nature, make you feel like you're in completely unexplored territory.



#### Days 2 - 3 North-West region of Spitsbergen

A kingdom of contrasts and natural marvels dotted with islands and peninsulas, northwest Spitsbergen fascinates with its preserved beauty. On these pristine lands, infinity unveils itself, treating the eyes to beauty sculpted by nature and enhanced by the changing light. The fjords bathed by icy waters, the jagged mountains and the imposing glaciers stand majestically before you, like monumental sculptures. In these lands, where souls are filled with deep serenity, only the murmur of broken ice, bearing mysteries and legends, disturbs the calmness. Aboard our Zodiacs and in the company of naturalist-guides, get as close as possible to this unique fauna and discover this centre for scientific expedition departures. In the distance, majestic whales glide silently through the glacial waters, whereas seals, walrus and Arctic foxes add a playful touch of life. As Svalbard reindeer wander the vast expanses, Arctic terns liven up the polar sky with their gracious flight and polar bears, which you may be lucky enough to see, patrol magnificently along the icy shores.

#### Days 4 - 6 Navigating through the sea ice

Enjoy the absolutely unique experience of sailing to the heart of the ice floe, this vast expanse of virgin, immaculate ice. The landscapes are constantly changing, shifting from a smooth, flat wilderness to a chaos of ice, then to channels of open water. Your ship will sail along these naturally open channels and through the areas where the frozen layer is thinnest, offering you the chance to experience magic maritime moments in the midst of drifting sea ice. It will also often be an opportunity to see a

particular kind of fauna, totally dependent on the ice floe.

#### Days 7 - 8 Geographic North Pole

Defined by a 90° North latitude, the Geographic North Pole lies on the Earth's rotational axis, at the intersection of all meridians. Plunged into darkness for six months of the year, then lit by the sun for the following six months, this mythical site, permanently covered in ice and remote from any land, has fascinated generations of explorers. So far, only a very few people have ever reached it: an exploit which is now accessible to you aboard Le Commandant Charcot.

#### Days 9 - 11 Navigating through the sea ice

Enjoy the absolutely unique experience of sailing to the heart of the ice floe, this vast expanse of virgin, immaculate ice. The landscapes are constantly changing, shifting from a smooth, flat wilderness to a chaos of ice, then to channels of open water. Your ship will sail along these naturally open channels and through the areas where the frozen layer is thinnest, offering you the chance to experience magic maritime moments in the midst of drifting sea ice. It will also often be an opportunity to see a particular kind of fauna, totally dependent on the ice floe.

#### Day 12 Sailing ice floes along Greenland

The north-east of Greenland is renowned for being home to one of the oldest and thickest layers of ice on the planet. Aboard your ship, you will have the unique opportunity of sailing to the





heart of this icy wilderness, many thousands of years old, and will travel along one of the world's most isolated coasts, between drifting ice and blue icebergs.

#### Days 13 - 15 Exploration of Ittoqqortoormiit Region

On the East coast of Greenland, in the Ittoqqortoormiit region that is covered with snow and ice for nine months of the year, you will have the rare opportunity of immersing yourself in the heart of an isolated territory and exploring the beauty of its infinite polar whiteness. The high alpine mountains punctuate the sky and gradually reveal their dark rock edges beneath a coat of snow. Located at the entrance to the longest system of fjords in the world, sits the village of Ittoqqortoormiit, one of the northernmost inhabited places on the East coast. Its name means 'great house' in Greenlandic and it is home to the last hunters of the polar region, whose ancestral way of life you will encounter. As soon as the thickness of the ice floe allows it, the hunters set out on the trail of walruses, seals, narwhals, musk oxen and polar bears, travelling by traditional dog sleds. On these expanses of immaculate snow, the silence is broken only by the sounds of the dogs, the grating of a sled coming back from a run or of footsteps on the ice. You will discover Inuit traditions through privileged and festive moments on the ice floe and in the village.

#### Day 15 Scoresby Sound

Covering an area of 13,700 km<sup>2</sup> (5,290 mi<sup>2</sup>), Scoresby Sound is the largest and deepest fjord system in the world. Named after the explorer and whale hunter William Scoresby, who

mapped the region in 1822, it opens onto the Greenland Sea to the north of the Blosseville Coast. This wild and desert region offers untouched panoramas of infinite beauty, with high snow-capped peaks rising tall alongside icebergs immersed in clear, blue-tinged waters. Discovering these stunning places in the wake of great explorers like Captain Charcot, who was deeply attached to the land of the Inuit, inspires a profound reverence.

#### Day 16 Exploring the Blosseville Coast

Aboard your ship, follow in the footsteps of Jules Poret de Blosseville, a French explorer and sailor. In 1833, he set off to discover this isolated and unexplored part of eastern Greenland aboard La Lilloise, an adventure with a fatal outcome. The uninhabited territory that bears his name lies to the south of Scoresby Sound. Surrounded by ice, icebergs and pack ice - thin or thick, flat or pronounced - as far as the eye can see, Blosseville Coast is a wild and distant place to which very few people have access. Exploring it means a slow immersion into the heart of a frozen, almost unreal desert, where the variations in light transform one's perception of the landscape. In the kingdom of the polar bears, Le Commandant Charcot, a silent ship open to the exterior, will offer exceptional moments observing Arctic wildlife, through a series of encounters.

#### Day 17 At sea aboard Le Commandant Charcot

Spend exceptional moments sailing aboard Le Commandant Charcot, the world's first luxury polar exploration vessel and the first PC2-class polar cruise ship capable of sailing into the very



heart of the ice, on seas and oceans which the frozen conditions render inaccessible to ordinary ships. Le Commandant Charcot is fitted with oceanographic and scientific equipment selected by a committee of experts. Take advantage of the on-board lectures and opportunities for discussion with these specialists to learn more about the poles. Participate in furthering scientific research with PONANT and let us discover together what these fascinating destinations have yet to reveal to us.

The experiences are unique and vary from day to day and for each departure. The Captain and the Expedition Leader will make every effort to ensure that your experience is as rich as possible, while respecting safety instructions and regulations imposed by the AECO.

#### Days 17 - 18 Reykjavík

Iceland's capital stretches along the edge of a vast bay in the west of the country. Perlan, the "Pearl of Reykjavik", a museum located on 'Oskjuhlíð hill, offers a panoramic view of the lush, green landscapes. A little further, one can easily spot the signpost showing the way to the evangelical Hallgrímskirkja church, and to the historical centre where one can stroll along the Skólavörðustígur and the Laugavegur, two lively streets with charming small shops. For some relaxation just outside of the city, visitors have the opportunity to visit the Reykjanes peninsula and its famous thermal lagoons of the Blue Lagoon.

#### Please note:

We are privileged guests in these extreme lands where we are at the mercy of weather and ice conditions. Our navigation, mainly in the fjords, will be determined by the type of ice we come across; as the fast ice must be preserved, we will take this into account from day to day in our itineraries. The sailing programme, outings, activities and observation of fauna cannot be guaranteed and are subject to weather and ice conditions.





# The Small Cruise Ship Collection

www.small-cruise-ships.com

small-cruise-ships.com

info@small-cruise-ships.com

## YOUR SHIP: LE COMMANDANT-CHARCOT

**YOUR SHIP:** Le Commandant-Charcot

**VESSEL TYPE:**

**LENGTH:**

**PASSENGER CAPACITY:**

**BUILT/REFURBISHED:**

With its hybrid propulsion combining liquefied natural gas (LNG) and electric generators, Le Commandant-Charcot has been designed to minimise the environmental impact of travel to the furthest latitudes. The decoration of the ship, designed by two internationally renowned design and architecture firms - the studio of Jean-Philippe Nuel and Wilmotte & Associes - is designed to be in harmony with the environment. The approach is contemporary with the desire to create a warm and elegant setting; stone, wood and leather recall the natural environment in which the ship is sailing. Equipped with just 135 staterooms including 31 suites with balconies and outside views, Le Commandant-Charcot welcomes you in an intimate and refined atmosphere. Outstanding gastronomy in the two restaurants, relaxation in the indoor pool surrounded by its winter garden, relaxation in the well-being area with sauna and Snow Room... Like on a private yacht, each of our guests is unique. **PUBLIC AREAS** Le Commandant-Charcot has many common areas that are designed and equipped to meet all of your needs while preserving the intimacy of each passenger. A 177 m<sup>2</sup> reception area includes: A reception/concierge desk, An expeditions desk, The ship's administrative services, The sales office, manned by

our Hospitality & Travel Manager officer, Our boutique which sells clothing, jewellery, beauty products, postcards and various accessories, The image & photo desk. The different lounges include a 302 m<sup>2</sup> main lounge including a 28 m<sup>2</sup> cigar lounge, a tea corner and a bar, with live music on selected evenings, A 400 m<sup>2</sup> panoramic bar and lounge, An open-air Bar. The recreation spaces Fitness & Beauty Corner: Fitness room: Elliptic, running machines, bicycles... Beauty Corner: Hairdresser, Massage rooms, Sauna, Snow Room, Nail Shop. Pool area: Indoor Pool and winter garden - Outdoor Pool Theatre: Capacity: 270-276 - Main show room for conferences and live entertainment on selected evenings - State-of-the-art audio and video technology. Leisure area: Public areas - Library - Medical centre. 16



Zodiacs on board.



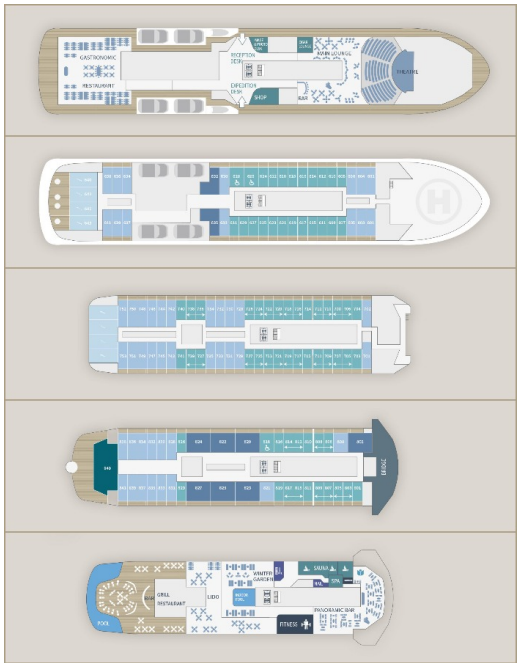
The Small Cruise  
Ship Collection

[www.small-cruise-ships.com](http://www.small-cruise-ships.com)



[small-cruise-ships.com](http://small-cruise-ships.com)
[info@small-cruise-ships.com](mailto:info@small-cruise-ships.com)

# INSIDE YOUR SHIP



Deluxe Suite Deck 6



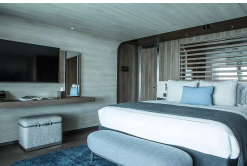
Deluxe Suite Deck 7



Deluxe Suite Deck 8



Duplex Suite



Grand Prestige Suite

Owner's Suite

Prestige Stateroom Deck 6

Prestige Stateroom Deck 7

Prestige Stateroom Deck 8

Prestige Suite Deck 7

Prestige Suite Deck 8

Privilege Suite Deck 8





# The Small Cruise Ship Collection

[www.small-cruise-ships.com](http://www.small-cruise-ships.com)



[small-cruise-ships.com](http://small-cruise-ships.com)

[info@small-cruise-ships.com](mailto:info@small-cruise-ships.com)

## PRICING

### 11-Sep-2026 to 26-Sep-2026

Deluxe Suite Deck 6	£37549 GBP pp
Grand Prestige Suite	£55735 GBP pp
Privilege Suite Deck 8	£59165 GBP pp
Deluxe Suite Deck 7	£39265 GBP pp
Prestige Stateroom Deck 8	£36519 GBP pp
Deluxe Suite Deck 8	£40635 GBP pp
Prestige Suite Deck 7	£52295 GBP pp
Suite Duplex	£81475 GBP pp
Owner's Suite	£113215 GBP pp
Prestige Suite Deck 8	£54019 GBP pp
Prestige Stateroom Deck 7	£35825 GBP pp
Prestige Stateroom Deck 6	£35139 GBP pp

### 13-Sep-2027 to 30-Sep-2027

Privilege Suite Deck 8	£56799 GBP pp
Deluxe Suite Deck 8	£39079 GBP pp
Deluxe Suite Deck 7	£37769 GBP pp
Prestige Stateroom Deck 6	£33825 GBP pp
Prestige Suite Deck 8	£51879 GBP pp
Prestige Suite Deck 7	£50235 GBP pp
Prestige Stateroom Deck 8	£35139 GBP pp
Prestige Stateroom Deck 7	£34489 GBP pp
Duplex Suite	£78135 GBP pp
Grand Prestige Suite	£53519 GBP pp
Deluxe Suite Deck 6	£36125 GBP pp

### 10-Jul-2027 to 27-Jul-2027

Prestige Suite Deck 8	£48535 GBP pp
Prestige Suite Deck 7	£46999 GBP pp
Prestige Stateroom Deck 8	£32905 GBP pp
Grand Prestige Suite	£50065 GBP pp
Deluxe Suite Deck 8	£36585 GBP pp
Prestige Stateroom Deck 7	£32299 GBP pp
Prestige Stateroom Deck 6	£31685 GBP pp
Duplex Suite	£73035 GBP pp
Privilege Suite Deck 8	£53129 GBP pp
Deluxe Suite Deck 6	£33829 GBP pp
Deluxe Suite Deck 7	£35359 GBP pp



The Small Cruise Ship Collection

[www.small-cruise-ships.com](http://www.small-cruise-ships.com)

01432 507 280 (within UK)

[info@small-cruise-ships.com](mailto:info@small-cruise-ships.com) | [small-cruise-ships.com](http://small-cruise-ships.com)