



The Small Cruise Ship Collection

www.small-cruise-ships.com

small-cruise-ships.com

info@small-cruise-ships.com

THE ETERNAL AEGEAN - LUXURY MEDITERRANEAN CRUISE BETWEEN VALLETTA AND ISTANBUL

In springtime, as the flowers pepper the landscapes with their bright colours and the sun illuminates the decor with its soft light, PONANT invites you on an exquisite interlude in the Mediterranean, between Valletta and Istanbul. During a 10-day journey, set off aboard *Le Boréal* to discover the riches of the Mediterranean Sea, a link between peoples, a crossroads of civilisations. Throughout your journey, you will benefit from an excursion included per person per port of call, to choose from a selection offered by PONANT. During this cruise, dive into Sicilian baroque architecture with a visit to the village of Noto from Syracuse; discover the typical villages of Lefkes and Naoussa on the island of Paros; or from Kusadasi, one of the Mediterranean's best-preserved ancient Greco-Roman cities, admire the Ephesus archaeological site, a UNESCO World Heritage Site. The diversity of experiences on offer promises you intense and varied moments (to discover the full range of excursions, go to the itinerary tab). The diversity of experiences on offer promises you intense and varied moments (to discover the full range of excursions, go to the itinerary tab). Southern Italy promises suspended moments where the beauty of the shores combines with the beauty of its historical remnants, which remain fascinating. In Syracuse, the Sicilian soul unfolds across the island of Ortygia - the oldest part of the city -, a maze of small streets dotted with churches, palaces, ancient remnants, sheltering a majestic cathedral in its very heart. In Puglia, Gallipoli, meaning "beautiful town" in Greek, reveals its Hellenic origins and offers up its singular atmosphere, where life is good. In the tranquillity of May, you will discover Greece as you have never seen it. From the mountainous island of Corfu,

The Small Cruise
Ship Collection
www.small-cruise-ships.com

01432 507 280 (within UK)

info@small-cruise-ships.com | small-cruise-ships.com

The Small Cruise Ship Collection

www.small-cruise-ships.com

small-cruise-ships.com

info@small-cruise-ships.com

you will arrive in the small port of Itea from where it is possible to visit the mythical site of Delphi or even the Hosios Loukas monastery, both of which are UNESCO World Heritage Sites. You will then cross the Corinth Canal and make a port of call on Hydra, a small island with yesteryear charm, where all motor traffic is forbidden. Paros, nestling in the heart of the Cyclades archipelago and renowned for its stunning white marble, offers a real concentration of Greek beauty, with its whitewashed houses, olive groves and ancient monuments. Finally, Patmos, known as "the Jerusalem of the Aegean Sea", reveals itself between unique landscapes of white-sand beaches and rocky bays. Kusadasi opens the gateway to Turkey and its treasures. The Ephesus archaeological site will tell you the great history of the Mediterranean, through this ancient city, among the oldest in the Magna Graecia of Asia Minor. _Le Boréal_ will head towards Bozcaada, a tranquil haven renowned since ancient times for the fruit of its vines. With its charming, cobbled streets, the island reveals a fine combination of Greek and Turkish influences and offers many opportunities to swim in the crystal-clear waters of the Aegean Sea. Then you reach Istanbul, a rich historical UNESCO listed site, at the end of a



magnificent cruise.

ITINERARY

Day 1 - Valletta

The whole of the Maltese capital Valletta is UNESCO World Heritage listed and occupies a peninsula in the north-east of the island. From the fountain of Tritons to Saint-Elme fort, there are as many majestic streets as there are narrow staircase vennels to explore. The painted loggia and carved corbels on the tall houses will accompany you in your explorations, and you'll rarely be bothered by traffic. You can visit the Grandmasters palace decorated with coats of arms and frescoes. Saint-John's cathedral and the ramparts which have guarded the city since the 16th century are also among the most emblematic sites of

The Small Cruise Ship Collection
www.small-cruise-ships.com

01432 507 280 (within UK)

info@small-cruise-ships.com | small-cruise-ships.com



The Small Cruise Ship Collection

www.small-cruise-ships.com

small-cruise-ships.com

info@small-cruise-ships.com

the city. Arranged in terraces, the Barrakka Gardens will punctuate your promenade with a green and floral experience.

under the rule of Taranto... By itself, it tells the story of the different civilisations of the Mediterranean Sea.

Day 2 - Syracuse, Sicily

Its undulating rocky coastline, the endless sandy beaches, the menacing form of Mount Etna which surveys its island like a patriarch, the flowery gardens on the hillside... Sicily lays out its varied landscapes like a shopkeeper displays his wares. Described by Cicero as "the most beautiful city in the world", Syracuse was one of the most prestigious cities in Sicily and at her height was even a rival for Athens. A central city of Ancient Greece, it was home to a succession of civilisations, each of which has left their mark. The blend of Arabic, Roman, Norman, Byzantine and Spanish cultures makes Syracuse a town that is extraordinarily rich in fragrances, colours and flavours.

Day 4 - Corfu

Named after the island, Corfu is the most famous city in the Ionian islands. Protected by citadel fortifications, its old city, designated UNESCO World Heritage, displays unusual Greco-Byzantine and Venetian architecture. Above the water stands Saint George's church, looking uncannily like a classical temple. The picturesque Pontikonisi, a stone's throw from the southern point of the town, is the legendary island where Odysseus landed.

Day 5 - Itea

Day 3 - Gallipoli

Gallipoli, which comes from the Greek *kalle polis*, meaning beautiful town, is very aptly named. Located on the heel of the boot, the town known as "the pearl of Puglia" has many attractions. The whiteness of its façades recalls its Greek origins while its architecture echoes its multiple influences. Its old town, perched on a limestone island, concentrates the cultural heritage of this city with a thousand faces, alternately a Roman colony, then Byzantine, the property of the Popes, Norman,

Tucked away in the Gulf of Corinth, this little port is situated in continental Greece, north-west of Athens. Take an easy stroll along the old cobblestone quays, while gazing at the summits encircling the Bay of Itea. We wouldn't be surprised if you are tempted by a visit to the Delphi Sanctuary. The sanctuary is located on a plateau on the slope of Mount Parnassus, just ten kilometres from Itea. A listed UNESCO World Heritage site, this is a once-in-a-lifetime experience whose ancient ruins are surrounded by steep mountains.



The Small Cruise Ship Collection

www.small-cruise-ships.com

small-cruise-ships.com

info@small-cruise-ships.com

Day 5 - Crossing the Corinth Canal

The Corinth Canal cuts through the Isthmus of Corinth, turning the Peloponnese into an island as it separates the region from the Greek mainland. Inaugurated in 1893, the canal is a little over six kilometres long and enables merchant vessels and passenger to avoid a long 400-km detour around the peninsula. The two sides of the canal reach a height of approximately fifty metres. From the exterior decks, don't miss this unique opportunity to watch the ship as it navigates along the narrow strip of water encased between tall, ochre cliffs. What an experience!

Day 6 - Hydra

This unusual gem belonging to the Saronic islands is located to the east of the Peloponnese. There are no cars here. Named after the island, the harbour town is layered up the slopes of a mountainous bay. You may be surprised to see beautiful stone mansions. These are traditional here, as are the multi-coloured caiques along the quays. Further along the shore, you will discover the Historical Archives Museum. Collections from Athens National History Museum are exhibited in the elegant villa Koundouriotis.

Day 7 - Paros

Famous for its white marble, the island of Paros is located in the Cyclades. Along the quays of Parikia, its main town, you'll see Byzantine churches and neoclassical buildings. To make the most of the turquoise waters, you can stop over in Naoussa. This little fishing port is bounded by a very beautiful cove.

Day 8 - Patmos

Patmos is one of the legendary must-see islands in the Dodecanese. This is where Saint John resided, presumed author of the last book in the Bible. The cave of the Apocalypse and the Saint John Monastery are dedicated to him. These sites, which are listed by UNESCO as World Heritage, are located at the top of a hillside planted with vines and orchards. On the shore, the crystalline coves of Kambos and Lampi offer absolutely gorgeous swimming areas.

Day 9 - Kusadasi

The attractive seaside resort of Kusadasi is located in a gulf on the western coast of Turkey. You can bathe there in clear waters or stroll along the coastal walk, in the shade of palms. In the historical district, you can take a mosey down the narrow streets and explore the colourful shops in the bazaar. Close by, the Ephesus archaeological site in the hillsides provides an



opportunity to discover the ruins of one of the most famous cities of Antiquity.

of loukoum and spices will draw the visitors' attention at the Egyptian Bazaar.

Day 10 - Bozcaada

Please Note:

Anchored off the coast of the legendary ancient city of Troy, in crystal-clear waters dotted with Greek islands Bozcaada is truly exceptional. And with good reason, since Bozcaada and its neighbour, Gökçeada, are the only Turkish islands in the Aegean Sea. Ceded to Turkey in 1923, it still bears traces of its past as a Greek island, as evidenced by its maze of cobbled streets and the traditional white houses with blue windows that dot the island. Renowned since antiquity for its vines, Bozcaada also stands out for its exceptional setting combining sheer cliffs, ribbons of golden sand, and tiny coves with translucent water.

Itineraries are subject to change.

Day 11 - Istanbul

Located on the Bosphorus, Istanbul is one of the most beautiful of all Turkish cities. Named Byzantium when founded by the Greeks, and then Constantinople under the Roman Empire, this city is steeped in history and, for this reason, is a listed UNESCO World Heritage site. Located on Sultanahmet hill, the great Blue Mosque, the mysterious Hagia Sophia and the vast Topkapi palace and its countless mosaics, dominate the Marmara Sea. In the Beyazit district, the Grand Bazaar allows to discover elegant covered passages. A little further away, delicate aroma



The Small Cruise Ship Collection

www.small-cruise-ships.com

small-cruise-ships.com

info@small-cruise-ships.com

YOUR SHIP: LE BOREAL

YOUR SHIP:

Le Boreal

VESSEL TYPE:

142 metres. Passenger Capacity:

264 (in twin cabins, just 200 in

LENGTH:

Antarctica). Built: 2011

PASSENGER CAPACITY:

BUILT/REFURBISHED:

Luxury Expedition / Cruise Ship A superb mega-yacht with 132 cabins, she is the fruit of the expertise of the Italian Fincantieri shipyard and French sophistication, as interpreted by designer Jean-Philippe Nuel. Le Boreal creates a unique atmosphere, a subtle blend of luxury, intimacy and well-being. The best materials, discreet elegance and a tasteful decor combined with exterior and interior lines to reflect a nautical mood. On board, soothing neutral tones are enlivened by splashes of red, our signature theme linking tradition and innovation to create personal touches in the spirit of a "private yacht". Cuisine Loyal to the great French tradition, the haute cuisine on board is worthy of the finest restaurants, where discreet, attentive service is the hallmark. Choose from two restaurants for breakfast, lunch and dinner. The Gastronomic Restaurant is situated on Le Liberte Deck and serves you French and international cuisine accompanied by fine wine. In the Grill Restaurant, you have the opportunity to eat outside and enjoy buffet lunch and themed dinner. Life On Board Whether you want to join other guests in the theatre or games area (Wii™ consoles, etc), or relax on your

own in a quiet corner of the library, Le Boreal has been designed to meet the needs of every guest. Everything has been done to preserve the independence of each guest to suit their personal tastes: lounges for lectures and shows, a spa in partnership with Carita™, but also more intimate spaces such as the library and internet corner. Comfortable cabins, nearly all with private balcony, are available for families either as triples or as communicating cabins. There is also a games area with Wii™ consoles, children's menus, and a baby-sitting service. Just as if you were on a private yacht, your time is your own to do as you please. Fitted with the latest equipment (Kinesis Wall, running machine) and in partnership with the famous Carita™ brand, the Beauty Centre on Le Boreal welcomes you for some relaxation and pampering (beauty treatments, hairdresser, hammam, balneotherapy). Wheelchairs 3 specially adapted wheelchair cabins (Deck 3 = Superior cabin no. 307, no balcony, Deck 4 = Prestige Cabin no. 407 - with balcony and Deck 5 = Prestige Cabin no 509, with balcony) and lifts to all decks/areas. Please click the following links to read more about Ponant and the other Ponant

The Small Cruise
Ship Collection
www.small-cruise-ships.com

01432 507 280 (within UK)

info@small-cruise-ships.com | small-cruise-ships.com



The Small Cruise Ship Collection

www.small-cruise-ships.com



small-cruise-ships.com

info@small-cruise-ships.com



cruise ships.



The Small Cruise
Ship Collection

www.small-cruise-ships.com

01432 507 280 (within UK)

info@small-cruise-ships.com | small-cruise-ships.com

The Small Cruise Ship Collection

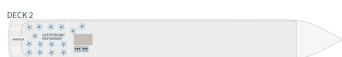
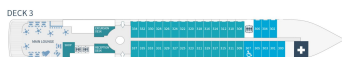
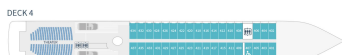
www.small-cruise-ships.com

small-cruise-ships.com

info@small-cruise-ships.com

INSIDE YOUR SHIP

Deck plans - Le Boréal, L'Austral, Le Soléal & Le Lyrial



DECK 7

Open air bar - Sun deck

DECK 6

Le Boréal, L'Austral, Le Soléal - Owner's Suite - 3 Deluxe Suites with private balcony - 20 Prestige staterooms with private balcony (with 18 Prestige staterooms convertible into 9 Prestige suites)
Le Lyrial - Owner's Suite - 1 Grand Privilege Suite - 3 Deluxe Suites with private balcony - 3 Grand Deluxe Suite - 8 Privilege Suites - 1 Prestige stateroom - Pool - Grill Restaurant - Internet space - Library - Panoramic Lounge - Panoramic terrace

DECK 5

27 Prestige staterooms with private balcony (with 22 Prestige staterooms convertible into 11 Prestige suites) - Fitness - PONANT Yacht Spa (Bikini, hammam, Massage, treatment) - Relaxation room - Image & photo desk - Bridge

DECK 4

20 Prestige Staterooms with private balcony - Theater

DECK 3

20 Deluxe Staterooms with private balcony - 8 Superior Staterooms - Main lounge - Shop - Reception Desk - Excursion Desk - Medical center

DECK 2

Gastronomic Restaurant - Marina

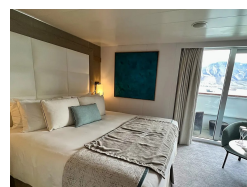
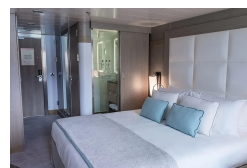
Owner's Suite
Deck 6
Privilege Suites
Deck 6 - Le Lyrial
Grand Privilege Suite
Deck 6 - Le Lyrial

Prestige Suites
Port 6 - 5 except Le Lyrial
Grand Deluxe Suites
Deck 6 - Le Lyrial
Deluxe Suites
Deck 6

Prestige Staterooms
Deck 4 - 5 - 6
Deluxe Staterooms
Deck 3
Superior Staterooms
Deck 3

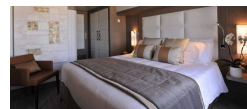
PONANT

Deluxe Stateroom

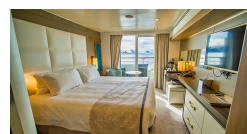


Deluxe Suite

Owners Suite



Prestige Deck 4



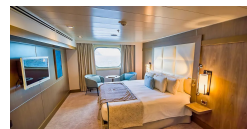
Prestige Deck 5

Prestige Deck 5 Suite

Prestige Deck 6

Prestige Deck 6 Suite

Superior Stateroom



The Small Cruise Ship Collection
www.small-cruise-ships.com

01432 507 280 (within UK)

info@small-cruise-ships.com | small-cruise-ships.com



The Small Cruise Ship Collection

www.small-cruise-ships.com

small-cruise-ships.com

info@small-cruise-ships.com

PRICING

14-May-2026 to 24-May-2026

Superior Stateroom	£5395 GBP pp
Prestige Deck 6	£6645 GBP pp
Owners Suite	£19620 GBP pp
Deluxe Stateroom	£5685 GBP pp
Prestige Deck 5	£6279 GBP pp
Deluxe Suite	£10749 GBP pp
Prestige Deck 6 Suite	£12235 GBP pp
Prestige Deck 5 Suite	£11935 GBP pp
Prestige Deck 4	£5985 GBP pp

ADDITIONAL CHARGES: Port Taxes 440 GBP pp



The Small Cruise Ship Collection

www.small-cruise-ships.com

01432 507 280 (within UK)

info@small-cruise-ships.com | small-cruise-ships.com