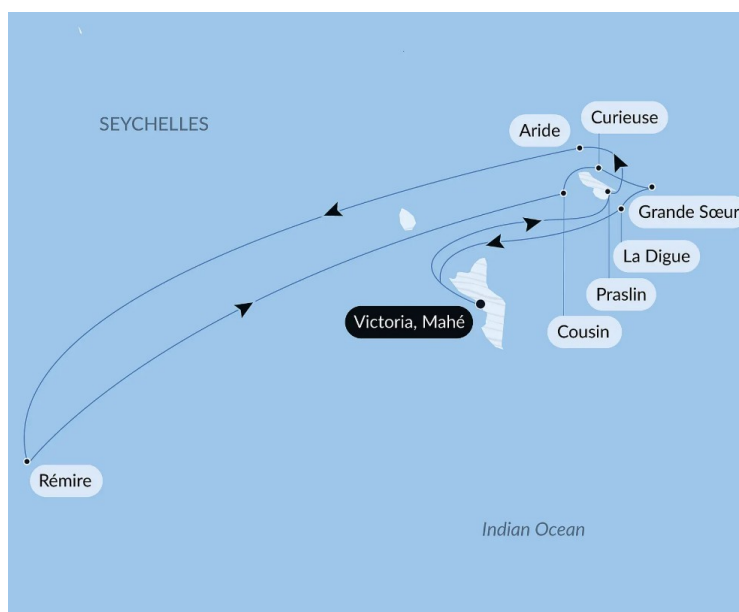




THE ESSENTIAL SEYCHELLES - LUXURY CRUISE FROM VICTORIA

Immerse yourself in the beauty of the Inner Islands of the Seychelles, where every moment seems suspended in time. This Eden lost in the middle of the Indian Ocean is home to some of the most beautiful beaches in the world. They unfurl their ribbons of white sand as the mangroves sway in the trade winds. Giant tortoises roam free on the beaches, colourful birds sing through the lush vegetation and the emerald waters reveal a magnificent seabed. Aride, Remire, Curieuse... Still wild and mysterious, these scattered islands form a chain of idyllic ports of call, revealing their secrets and inviting you to spend an unforgettable and relaxing time away from it all.



ITINERARY

Day 1 - Victoria, Mahé

Discover Mahe, the main island of the Seychelles and also the largest of the archipelago, home to the capital, Victoria. Mahe has almost 70 beaches of fine sand, framed by the emblematic granite rocks, and whose crystal clear waters are renowned for their rich underwater life. The island is also famous for its splendid mountain panoramas accessible on hikes, such as the Morne Seychellois, which is 905 metres high and overlooks the Indian Ocean. Mahe is also an island full of history where fine colonial properties rub shoulders with Creole houses - and don't



The Small Cruise Ship Collection

www.small-cruise-ships.com

small-cruise-ships.com

info@small-cruise-ships.com

forget the marvellous Botanical Gardens in Victoria.

Days 2 - 3 - Praslin Island & Aride Island

Situated some forty kilometres away from Victoria, Praslin is the second largest island in the Seychelles. Its idyllic beaches where granite rocks nestle in immaculate sand correspond perfectly to how we imagine the Seychelles to be. They invite visitors to dive into the turquoise waters, which are ideal for snorkelling. In the centre of the island, hidden in the heart of a stunning tropical rainforest, lies the Vallee de Mai Nature Reserve, listed as a UNESCO World Heritage Site. In this veritable plant sanctuary, several endemic species of palm trees can be observed, as well as the famous sea coconut, which can weigh up to 20 kg and is sometimes called "coco fesse" because its shape calls to mind a pair of buttocks.

Aride is an island in the Seychelles situated a few kilometres north-west of Praslin. Listed as a nature reserve, this pearl of the Indian Ocean will seduce you with the beauty of its landscapes of wild cliffs and fine-sand beaches. Protected from human impact and sometimes called "bird capital", it is home to several endemic plants as well as exceptional wildlife. Most notably, it is the refuge of an impressive number of seabirds (Seychelles magpie-robins, terns, noddies, and more), and reptiles, such as Wright's skinks, which can be found in the island's wooded areas. Sea turtles can also be observed on the island's beaches.

Day 4 - Rémire island

Remire Island is like a piece of confetti in the Indian Ocean and is a captivating place to visit. Located in the Outer Islands of the Seychelles, it is prized for its unique biodiversity, including its exceptionally rich underwater life. The rare inhabitants of this tropical islet watch over its preservation, and a walk amidst its lush vegetation, home to delightful birds, will delight fans of unspoilt areas. For those who love snorkelling, myriad colourful fish live among the coral reefs that border the island.

Day 5 - Cousin Island

This small granitic islet west of Praslin measures around thirty hectares and is teeming with life. A private property until 1968, Cousin Island was bought by the International Council for Bird Preservation (now known as BirdLife International) to be converted into a nature reserve. The main aim of this effort was first and foremost to save two endangered bird species, the Seychelles warbler and the Seychelles fody. This operation was a real success, as the island is now the most protected in the archipelago and is home to a large number of plants and animals endemic to the Seychelles.

Days 5 - 6 - Curieuse Island

Situated off the coast of Praslin, Curieuse has a distinguishing feature: its red earth. Discovered in 1768 by the French explorer Marc-Joseph Marion du Fresne, it was ravaged by a fire in 1771 and then home to a leper colony of which a few vestiges still remain. Declared a national marine park in 1979, it is home to many underwater species, which can be discovered while scuba



diving or snorkelling in the idyllic waters of the Indian Ocean. But above all, Curieuse is renowned for the hundreds of Aldabra giant tortoises that live there. It is highly likely that you will get the chance to meet these fascinating reptiles. Along with Praslin, it is also the only island on which the sea coconut grows wild.

[Days 6 - 7 - Grande Soeur](#)

Located 6 km north of La Digue, Grande Soeur Island is renowned for its two sumptuous beaches and its translucent waters, protected by a coral reef. An ideal spot for snorkelling and observing the sea turtles that co-exist here with the many multi-coloured fish. The pristine Grande Soeur Island is considered to be one of the most beautiful islands in the Seychelles.

[Day 7 - 8 - La Digue Island](#)

La Digue Island is a veritable concentration of all the beauty of the Seychelles. Located 6 km south-east of Praslin, this small piece of land that looks like paradise is the third-largest island in the Seychelles, despite its modest size (5 km by 3 km)! Turquoise waters just asking you to swim in them, lush vegetation sheltering giant tortoises, beaches of fine sand fringed with coconut trees and surrounded with those emblematic large granite rocks with their pink highlights like at the famous Anse Source d'Argent: the perfect picture postcard... Authentic and preserved, the island follows a peaceful rhythm, with the only means of transport along its little roads being bikes or traditional oxcarts.

[Day 8 - La Digue Island](#)

****La Digue Island**** is a veritable concentration of all the beauty of the Seychelles. Located 6 km south-east of Praslin, this small piece of land that looks like paradise is the third-largest island in the Seychelles, despite its modest size (5 km by 3 km)! Turquoise waters just asking you to swim in them, lush vegetation sheltering ****giant tortoises****, beaches of fine sand fringed with coconut trees and surrounded with those emblematic ****large granite rocks with their pink highlights**** like at the famous Anse Source d'Argent: the perfect picture postcard... ****Authentic and preserved****, the island follows a peaceful rhythm, with the only means of transport along its little roads being bikes or traditional oxcarts.

[Days 8 - 9 - Victoria, Mahé](#)

Discover Mahe, the main island of the Seychelles and also the largest of the archipelago, home to the capital, Victoria. Mahe has almost 70 beaches of fine sand, framed by the emblematic granite rocks, and whose crystal clear waters are renowned for their rich underwater life. The island is also famous for its splendid mountain panoramas accessible on hikes, such as the Morne Seychellois, which is 905 metres high and overlooks the Indian Ocean. Mahe is also an island full of history where fine colonial properties rub shoulders with Creole houses - and don't forget the marvellous Botanical Gardens in Victoria.

[Please note:](#)



The Small Cruise
Ship Collection

www.small-cruise-ships.com

small-cruise-ships.com

info@small-cruise-ships.com

Itineraries are subject to change.



The Small Cruise
Ship Collection

www.small-cruise-ships.com

01432 507 280 (within UK)

info@small-cruise-ships.com | small-cruise-ships.com



The Small Cruise Ship Collection

www.small-cruise-ships.com

small-cruise-ships.com

info@small-cruise-ships.com

YOUR SHIP: LE BOUGAINVILLE

YOUR SHIP:

Le Bougainville

VESSEL TYPE:

LENGTH:

PASSENGER CAPACITY:

BUILT/REFURBISHED:

Featuring innovative and environmentally-friendly equipment, elegantly designed cabins, spacious suites with large windows, and lounge areas that open onto the outside, this new limited-capacity yacht boasting just 92 cabins and suites will offer you a truly unique cruising experience. As the first ship in a new series that remains true to the Ponant spirit, Le Bougainville will embody the unique atmosphere that is the cruise line's hallmark: a subtle blend of refinement, intimacy and comfort. Aboard this ship that flies the French flag, you will experience the incomparable pleasure of an intimate cruise, with the possibility of exploring an ever-increasing range of destinations in an ethnic-chic ambiance with luxury service. Experience a luxurious setting where the accent is on authenticity and passion for travel. **RESTAURANTS** As it is an essential part of French culture, gastronomy will naturally have pride of place aboard this new ship. Through its two restaurants, Le Bougainville will invite you on a journey to elegance and epicureanism. In a relaxed atmosphere, a first dining area located on Deck 3 and able to seat 70 will serve grilled meats daily, along with a variety of salads and desserts. To the back of Deck 4, you will find a 260 m² panoramic restaurant which can accommodate all of

our passengers in a single sitting. Designed differently to that on our other ships, this dining area, which opens onto the outside, will have a buffet of salads, desserts and cheeses at your disposal. Our discreet and attentive crew will provide table service for hot meals. **PUBLIC AREAS** Like Le Boreal and its sisterships, Le Bougainville has many common areas that are designed and equipped to meet all of your needs while preserving the intimacy of each passenger. A 140 m² reception area includes: A reception/concierge desk, An excursions desk, The ship's administrative services, The sales office, manned by our Guest Relations Officer, Our 50 m² boutique which sells clothing, jewellery, beauty products, postcards and various accessories, Toilets accessible to passengers with reduced mobility. A new hydraulic platform with adjustable height provides: Easier boarding than on any other cruise ship, Easier Zodiac embarkation and disembarkation for expeditions, Easier access to the sea for swimming and practising various water sports such as kayaking or paddle-boarding. A pool deck offering: A pool with a panoramic view, equipped with a counter-current swimming system, A pleasant solarium, An outdoor bar and lounge with armchairs and sofas. A 200 m² main lounge which can accommodate all of our passengers to share convivial moments and to host activities organised during the day or evening. Lastly, a theatre that seats 188, equipped with: The latest sound and lighting technology, A LED wall as the stage backdrop, for the projection of high-resolution images and videos. Please click the following links to read more about Ponant and the other Ponant



The Small Cruise
Ship Collection

www.small-cruise-ships.com

small-cruise-ships.com info@small-cruise-ships.com



cruise ships.

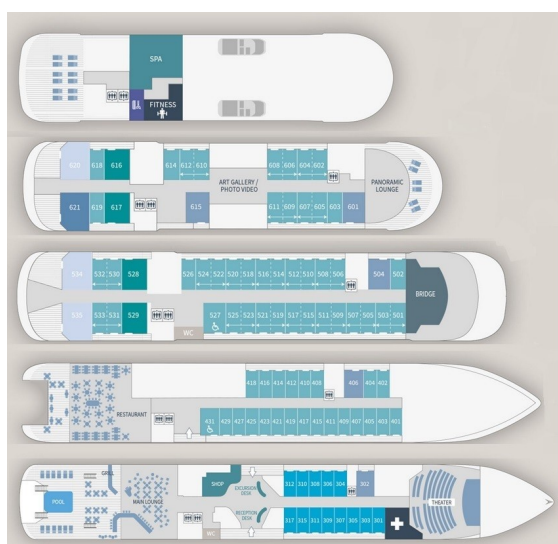
The Small Cruise Ship Collection

www.small-cruise-ships.com

small-cruise-ships.com

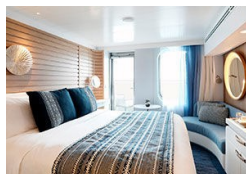
info@small-cruise-ships.com

INSIDE YOUR SHIP

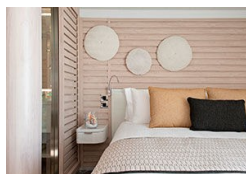


- Owner's Suite
Deck 6
- Privilege Suites
Deck 5-6
- Grand Deluxe Suites
Deck 5-6
- Prestige Suites
Deck 5-6
- Deluxe Suites
Deck 5-6
- Prestige Cabins
Deck 4-5-6
- Deluxe Cabins
Deck 3

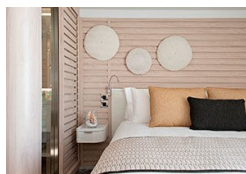
Deluxe Stateroom



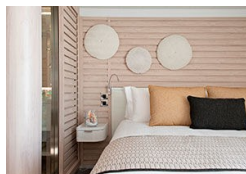
Deluxe Suite Deck 3



Deluxe Suite Deck 4



Deluxe Suite Deck 5



Deluxe Suite Deck 6

Grand Deluxe Suite Deck 5

Grand Deluxe Suite Deck 6

Prestige Deck 4

Prestige Deck 5

Prestige Deck 5 Suite

Prestige Deck 6

Prestige Deck 6 Suite

Privilege Suite Deck 5

Privilege Suite Deck 6



PRICING

17-Jan-2026 to 25-Jan-2026

Deluxe Suite Deck 5	£7539 GBP pp
Deluxe Suite Deck 3	£7539 GBP pp
Privilege Suite Deck 5	£11295 GBP pp
Prestige Deck 5 Suite	£10229 GBP pp
Prestige Deck 4	£4855 GBP pp
Prestige Deck 6 Suite	£10765 GBP pp
Grand Deluxe Suite Deck 5	£12419 GBP pp
Grand Deluxe Suite Deck 6	£12419 GBP pp
Deluxe Stateroom	£4369 GBP pp
Prestige Deck 5	£5105 GBP pp
Prestige Deck 6	£5395 GBP pp
Privilege Suite Deck 6	£11295 GBP pp
Deluxe Suite Deck 4	£7539 GBP pp
Deluxe Suite Deck 6	£7539 GBP pp

Grand Deluxe Suite Deck 6	£12419 GBP pp
Deluxe Suite Deck 3	£7539 GBP pp
Deluxe Stateroom	£4369 GBP pp
Privilege Suite Deck 6	£11295 GBP pp
Grand Deluxe Suite Deck 5	£12419 GBP pp
Prestige Deck 6 Suite	£10765 GBP pp
Prestige Deck 5 Suite	£10229 GBP pp
Prestige Deck 5	£5105 GBP pp
Prestige Deck 6	£5395 GBP pp
Deluxe Suite Deck 5	£7539 GBP pp
Privilege Suite Deck 5	£11295 GBP pp
Deluxe Suite Deck 4	£7539 GBP pp
Deluxe Suite Deck 6	£7539 GBP pp
Prestige Deck 4	£4855 GBP pp

25-Jan-2026 to 02-Feb-2026



PRICING

07-Jan-2027 to 15-Jan-2027

Privilege Suite Deck 6	£10909 GBP pp
Privilege Suite Deck 5	£10909 GBP pp
Prestige Deck 6 Suite	£10395 GBP pp
Prestige Deck 5 Suite	£9875 GBP pp
Prestige Deck 6	£5239 GBP pp
Prestige Deck 5	£4955 GBP pp
Prestige Deck 4	£4729 GBP pp
Grand Deluxe Suite Deck 6	£11985 GBP pp
Grand Deluxe Suite Deck 5	£11985 GBP pp
Deluxe Suite Deck 6	£7299 GBP pp
Deluxe Suite Deck 5	£7299 GBP pp
Deluxe Suite Deck 4	£7299 GBP pp
Deluxe Suite Deck 3	£7299 GBP pp
Deluxe Stateroom	£4259 GBP pp

Privilege Suite Deck 6	£10909 GBP pp
Prestige Deck 6 Suite	£10395 GBP pp
Prestige Deck 6	£5239 GBP pp
Prestige Deck 5	£4955 GBP pp
Deluxe Suite Deck 6	£7299 GBP pp
Deluxe Suite Deck 5	£7299 GBP pp
Privilege Suite Deck 5	£10909 GBP pp
Prestige Deck 5 Suite	£9875 GBP pp
Prestige Deck 4	£4729 GBP pp
Grand Deluxe Suite Deck 6	£11985 GBP pp
Grand Deluxe Suite Deck 5	£11985 GBP pp
Deluxe Suite Deck 4	£7299 GBP pp
Deluxe Suite Deck 3	£7299 GBP pp
Deluxe Stateroom	£4259 GBP pp

15-Jan-2027 to 23-Jan-2027