



The Small Cruise  
Ship Collection

www.small-cruise-ships.com



small-cruise-ships.com

info@small-cruise-ships.com

## THE DIVERSE WEST COAST OF THE AMERICAN CONTINENT CRUISE

Eight countries, countless experiences: enjoy an extraordinary route of discovery from south to north off America's West Coast. Let yourself be inspired by unique cultural treasures, breathtaking natural wonders and an intoxicating zest for life.



### ITINERARY

Day 1 Valparaiso/Chile, departure 21.00 hrs

Days 2 - 4 Relaxation at sea

Day 5 Paracas (Pisco)/Peru, 07.00 - 19.00 hrs

Situated on the Pacific coast south of Pisco, Paracas offers impressive nature experiences - above all, in the Paracas National Reserve: the protected area is home to an abundance of wildlife, including maned seals, blue-footed boobies, pelicans

The Small Cruise  
Ship Collection

www.small-cruise-ships.com

01432 507 280 (within UK)

info@small-cruise-ships.com | small-cruise-ships.com



## The Small Cruise Ship Collection

[www.small-cruise-ships.com](http://www.small-cruise-ships.com)



[small-cruise-ships.com](http://small-cruise-ships.com)

[info@small-cruise-ships.com](mailto:info@small-cruise-ships.com)

and Humboldt penguins. The Islas Ballestas and the Candelabro de Paracas, the mysterious lines of the Paracas Peninsula that probably once served as a guide for seafarers, are further highlights of the region. Despite the earthquake in 2007, Paracas still bears traces of its ancient culture, which dates back around 3,000 years. However, unspoilt nature remains the main attraction of this enchanting coastal town.

#### Day 6 Callao (Lima)/Peru, arrival 06.00 hrs

The gateway to the Peruvian capital Lima offers a rich mix of history and natural beauty. Founded in 1537 by Francisco Pizarro, Callao quickly became the most important commercial centre in the Spanish colonies of the Pacific. The city was repeatedly the scene of great adventures and conflicts - from attacks by English and Dutch privateers to the wars of liberation, in which the fortress was fiercely contested. Thor Heyerdahl also started his famous Kon-Tiki expedition from here in 1947. Off the coast lie the islands of San Lorenzo and Palomino, home to sea lions, Humboldt penguins and a variety of seabirds - a natural paradise that invites visitors to explore and enjoy its beauty.

#### Day 7 Callao (Lima), departure 17.00 hrs

#### Day 8 Salaverry/Peru, 13.00 - 19.00 hrs

Salaverry, on Peru's northern Pacific coast, is considered the gateway to Trujillo, which is just under 15 km (9.3 mi.) away. The third-largest city in Peru is known as the "city of eternal spring", due to its pleasant climate, and it features a mix of pre-Columbian and colonial buildings. Peru's cultural treasures such as the impressive UNESCO World Heritage Site of Chan Chan, the former capital of the Chimu people built of adobe, are not far away. Those seeking relaxation can cool off in the nearby

seaside resort of Huanchaco, which, together with its extensive beaches, is also famous for its traditional reed boats.

#### Day 9 Relaxation at sea

#### Day 10 Manta/Ecuador, 08.00 - 18.00 hrs

The relaxed atmosphere and impressive coastal landscapes characterise the Ecuadorian city with its port. Tuna fishing is the main source of income, but Manta offers much more than that: beaches like Playa Santa Marianita and Playa San Lorenzo are a plea to slow down a pace and enjoy some water sports activities. Those interested in culture and civilisation will obtain fascinating insights into the Manteno-Huancavilca culture at the archaeological museum. Not far away is Montecristi, famous for its Panama hats, which actually come from Ecuador. As an ideal starting point for trips to Quito, the Andes or the Galapagos Islands, Manta is a city that promises both relaxation and adventure.

#### Day 11 Relaxation at sea

#### Day 12 Chapera Island/Panama, 12.00 - 20.00 hrs

Just a short boat trip from Panama City, Chapera Island is a picturesque idyll that welcomes visitors with its unspoilt beauty. Turquoise-coloured waves gently lap the beaches lined with tropical greenery, creating a laid-back atmosphere that makes everyday life seem very far away. If you want to escape the hustle and bustle of the city, you'll find a place of peace and relaxation here, surrounded by nature and a gentle sea breeze - perfect for unwinding.

#### Day 13 Panama City/Panama, 07.00 - 18.00 hrs



The Small Cruise Ship Collection

[www.small-cruise-ships.com](http://www.small-cruise-ships.com)

**01432 507 280** (within UK)

[info@small-cruise-ships.com](mailto:info@small-cruise-ships.com) | [small-cruise-ships.com](http://small-cruise-ships.com)



## The Small Cruise Ship Collection

[www.small-cruise-ships.com](http://www.small-cruise-ships.com)



[small-cruise-ships.com](http://small-cruise-ships.com)

[info@small-cruise-ships.com](mailto:info@small-cruise-ships.com)

A fascinating mix of modern elegance and tropical charm awaits visitors to Panama City. The imposing skyline rises above the blue sea, an impressive contrast to the Casco Viejo, the historic old town: colourfully restored buildings and flower-filled courtyards with charming cafes, galleries and squares invite you to while away some time. A walk along the Cinta Costera promenade offers marvellous views of the sea and the city. Vibrant city life combined with exotic flair - Panama City offers an unforgettable urban experience.

Day 14 Relaxation at sea

Day 15 Quepos/Costa Rica, 07.00 - 19.00 hrs

Quepos is located on the tropical Pacific coast of Costa Rica and is the gateway to the spectacular Manuel Antonio National Park. The region's lush rainforests and wild beaches are home to an impressive array of wildlife: howler monkeys, iguanas and sloths can all be found here and, with a little luck, observed at close range. Between July and November, whales visit the bay - an unforgettable natural spectacle. The town of Quepos itself has a relaxed atmosphere, where local restaurants and bustling markets invite you to while away some time and experience the friendly Costa Rican culture.

Day 16 Relaxation at sea

Day 17 Puerto Quetzal/Guatemala, 07.00 - 19.00 hrs

A journey through scenic coffee plantations leads from Puerto Quetzal to the colonial city of Antigua: at an altitude of around 1,600 m (5,249 ft), it boasts well-preserved architecture and views of the Pacaya volcano, one of the most active volcanoes in the world. Puerto San Jose, where a black volcanic beach attracts locals and visitors alike, is also located near Puerto

Quetzal. The area around Puerto Quetzal is an ideal starting point for exciting excursions and explorations of Guatemala.

Day 18 Relaxation at sea

Day 19 Huatulco/Mexico, 08.00 - 14.00 hrs

Huatulco on the Pacific coast of Mexico has nine picturesque bays and more than 30 beaches with crystal-clear water and untouched nature. The breathtaking landscape makes explorers' hearts beat faster, and the rich wildlife makes every visit an experience. The charming town itself offers numerous restaurants, cafes and shops that invite you to stroll and while away some time - a perfect interplay of nature, relaxation and culture.

Day 20 Relaxation at sea

Day 21 Puerto Vallarta/Mexico, 08.00 - 14.00 hrs

The resort of Puerto Vallarta is located in the heart of a lush valley on the Pacific coast, surrounded by the Sierra Madre. The old town, El Centro, and the Zona Romantica delight visitors with their charming boutiques and colonial architecture. On the lively El Malecon promenade, restaurants, bars and street artists invite you to while away some time, while Marina Vallarta boasts luxury hotels and a marina. Here you can enjoy relaxed beach life with authentic Mexican spirit.

Day 22 Relaxation at sea

Day 23 Cabo San Lucas/Baja California/Mexico, 09.00 - 19.00 hrs

Luxury and glamour have come to shape Cabo San Lucas and the scenic coast of Baja California - a refuge for Hollywood stars in the 1940s. World-class resorts, exclusive villas, relaxing spas



**01432 507 280** (within UK)

[info@small-cruise-ships.com](mailto:info@small-cruise-ships.com) | [small-cruise-ships.com](http://small-cruise-ships.com)



## The Small Cruise Ship Collection

[www.small-cruise-ships.com](http://www.small-cruise-ships.com)



[small-cruise-ships.com](http://small-cruise-ships.com)

[info@small-cruise-ships.com](mailto:info@small-cruise-ships.com)

and first-class golf courses dot the landscape. A particular highlight is the imposing arched rock El Arco at the southernmost point. Isla Espiritu Santo and Balandra Bay offer unforgettable experiences in nature, while snorkellers and divers are thrilled by the underwater world. Pacific waves make surfers' hearts beat faster, whereas the calm waters of the Sea of Cortez, known as the "aquarium of the world", invite you to relax and unwind.

Days 24 - 25 Relaxation at sea

Day 26 San Diego/California/USA, 08.00 - 18.00 hrs

With its mild climate and sunshine almost all year round, San Diego attracts visitors from all over the world. Whether hiking along an extensive network of trails, relaxing on world-famous beaches or discovering the renowned craft beer scene - "America's Finest City" offers something for everyone. Another highlight is anchored at Navy Pier: the USS Midway Museum, housed on a historic aircraft carrier, takes you on a journey through the maritime history of the USA.

Day 27 Santa Barbara/California/USA, 07.00 - 18.00 hrs

Between the Pacific beaches and the gentle hills of the Santa Ynez Mountains lies Santa Barbara, often referred to as the "American Riviera". With its Mediterranean flair and breathtaking coastline, it captivates visitors. The Santa Barbara Courthouse, known for its impressive architecture and the panoramic views from its clock tower terrace, is one of the city's main attractions, as is the colourful State Street, lined with boutiques and restaurants. Insider tips from Santa Barbara are the local wines and seasonal dishes that round off every visit deliciously.

Day 28 Relaxation at sea

Day 29 San Francisco/California/USA, arrival 12.00 hrs Overnight stay on board

San Francisco is one of the most iconic cities in the USA. The world-famous Golden Gate Bridge, the alternative district of Haight-Ashbury and colourful Chinatown are just a few of its many highlights. Artistic murals in the trendy Mission District, the charming cable cars in Fisherman's Wharf and the impressive view of the former prison island of Alcatraz are also among the unique experiences that San Francisco offers its visitors. Foodies are in for a treat in the historic Ferry Building, which is home to a wide variety of delicatessens and world-class restaurants.

Day 30 San Francisco

Please note:

Itineraries are subject to change.



The Small Cruise Ship Collection

[www.small-cruise-ships.com](http://www.small-cruise-ships.com)

01432 507 280 (within UK)

[info@small-cruise-ships.com](mailto:info@small-cruise-ships.com) | [small-cruise-ships.com](http://small-cruise-ships.com)



The Small Cruise  
Ship Collection

www.small-cruise-ships.com



small-cruise-ships.com

info@small-cruise-ships.com

## YOUR SHIP: EUROPA

**YOUR SHIP:** Europa

**VESSEL TYPE:**

**LENGTH:**

**PASSENGER CAPACITY:**

**BUILT/REFURBISHED:**

Extensive space for a maximum of 400 guests A crew-to-guest ratio of almost one to one Outside suites only, most with a veranda Five restaurants for the ultimate in culinary indulgence - including THE GLOBE by three-star chef Kevin Fehling Top-class entertainment: experience international artists and experts live on board EUROPA Refresh: new fitness and wellness concepts for even more well-being MS EUROPA is an award-winning luxury cruise ship renowned for setting global standards in refined small-ship cruising. Accommodating a maximum of just 400 guests, the ship offers an intimate and highly personalised experience, supported by an almost one-to-one crew-to-guest ratio. Designed around the concept of casual luxury, EUROPA combines spacious surroundings, attentive service, and elegant all-suite accommodation, with all suites featuring ocean views and most offering private verandas. Onboard, guests can enjoy five exceptional restaurants, including fine dining concepts created in collaboration with acclaimed chefs, alongside world-class entertainment, wellness facilities, and thoughtfully curated enrichment experiences. The ship's smaller size allows access to unique itineraries and exclusive ports beyond the reach of larger vessels, while recent EUROPA Refresh

enhancements have introduced updated fitness and wellness concepts for an even more elevated onboard experience. Blending sophistication, comfort, and flexibility, MS EUROPA delivers a truly premium voyage to destinations



worldwide.



01432 507 280 (within UK)

info@small-cruise-ships.com | small-cruise-ships.com



The Small Cruise  
Ship Collection

[www.small-cruise-ships.com](http://www.small-cruise-ships.com)



[small-cruise-ships.com](http://small-cruise-ships.com)

[info@small-cruise-ships.com](mailto:info@small-cruise-ships.com)

## INSIDE YOUR SHIP

Penthouse Deluxe Suite



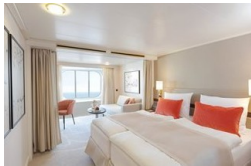
Penthouse Grand Suite



SPA Suite



Suite with panorama window



Veranda Suite Cat. 4-5

Veranda Suite Cat. 6-7



The Small Cruise  
Ship Collection

[www.small-cruise-ships.com](http://www.small-cruise-ships.com)



[small-cruise-ships.com](http://small-cruise-ships.com)

[info@small-cruise-ships.com](mailto:info@small-cruise-ships.com)

## PRICING

17-Feb-2027 to 18-Mar-2027

Suite with panorama window	£11215 GBP pp
Veranda Suite Cat. 4-5	£13305 GBP pp
Veranda Suite Cat. 6-7	£13305 GBP pp
SPA Suite	£23595 GBP pp
Penthouse Deluxe Suite	£36645 GBP pp
Penthouse Grand Suite	£58455 GBP pp