

The Small Cruise Ship Collection

www.small-cruise-ships.com

small-cruise-ships.com

info@small-cruise-ships.com

THE CANADIAN MARITIMES AND NEWFOUNDLAND SMALL SHIP CRUISE

Embark on a circumnavigation of Newfoundland and sail into Eastern Canada's breathtaking natural beauty. Discover Norse history at L'Anse aux Meadows, the only transatlantic site established by Vikings. See World War II harbor defenses and visit the only North American island that remains under French control. Your journey of pure discovery ventures to the legendary islands of Cape Breton, St-Pierre, and the Îles de la Madeleine in the Gulf of St. Lawrence.



ITINERARY

Day 1 St. John's, Newfoundland and Labrador, Canada / Embark Ship
Arrive in St. John's, the picturesque capital city of Newfoundland and Labrador, in the afternoon before embarking the ship.

Day 2 St-Pierre, France

Your first landfall is St-Pierre, France's oldest remaining overseas territory. Get to know this picturesque French fishing enclave where you'll visit a local island to learn the importance of the historic cod fisheries and explore the fascinating L'Arche Museum.

The Small Cruise Ship Collection

www.small-cruise-ships.com

01432 507 280 (within UK)

info@small-cruise-ships.com | small-cruise-ships.com



The Small Cruise Ship Collection

www.small-cruise-ships.com

small-cruise-ships.com

info@small-cruise-ships.com

Day 3 Louisbourg and Baddeck, Cape Breton Island, Nova Scotia

Visit the reconstructed Fortress of Louisbourg, an 18th-century fort where the British and French fought. Later, visit the village of Baddeck, where Alexander Graham Bell built his summer home, now the centerpiece of a beautiful park and museum. Explore the life of Bell and enjoy a tour of the Bell Museum to view historic artifacts.

Day 4 Îles de la Madeleine, Québec

A cluster of wispy islands isolated in the Gulf of St. Lawrence, the Îles de la Madeleine are home to miles of dunes, grassy hills and dazzling red sandstone cliffs. Local experts guide you across this landscape of caves and sea arches, stopping along the way in colorful fishing villages as you learn about Acadian culture.

Day 5 Exploring the Gulf of St. Lawrence

This is a day of exploration where your expedition team looks for the best opportunities to focus on the natural history and landscapes of the region.

Day 6 Gros Morne National Park

Graced by cliffs, fjords and a sweeping alpine plateau, Gros Morne National Park has been designated a UNESCO World Heritage site for its spectacular geology. Go on a variety of walks with your naturalists along waterfalls, marine inlets and forested trails. Learn about the forces that shaped this land and the ancient serpentine rock that illustrates the phenomenon of plate tectonics.

Day 7 Red Bay

Explore Red Bay, the site of a historic Basque whaling station dating back to the 1500s. See original Basque remains and artifacts at this National Historic Site or take a scenic hike to a

viewpoint overlooking the small village.

Day 8 L'Anse aux Meadows

In the World Heritage site of L'Anse aux Meadows, walk among 11th-century Norse ruins and reconstructed sod huts and learn the saga of the Vikings in North America-nearly 500 years before Columbus arrived.

Day 9 Exploring Eastern Newfoundland

Wild, rugged and often accessible only by sea, Newfoundland's east coast is dotted with tiny fishing villages tucked into coves. Explore these stunning shores, and back aboard, gain insights from experts into the island's people and wildlife.

Day 10 St. John's / Disembark Ship / Home

Disembark in St. John's and transfer to the airport for flights home.

Please note:

Itineraries are subject to change.

The Small Cruise Ship Collection

www.small-cruise-ships.com

01432 507 280 (within UK)

info@small-cruise-ships.com | small-cruise-ships.com

The Small Cruise Ship Collection

www.small-cruise-ships.com

small-cruise-ships.com

info@small-cruise-ships.com

YOUR SHIP: NATIONAL GEOGRAPHIC EXPLORER

YOUR SHIP:	National Geographic Explorer
VESSEL TYPE:	Luxury Expedition
LENGTH:	108 meters
PASSENGER CAPACITY:	148 (single & twin cabins)
BUILT/REFURBISHED:	1982 / 2008

National Geographic Explorer is a state-of-the-art expedition ship. It is a fully stabilized, ice-class vessel, enabling it to navigate polar passages while providing exceptional comfort. It carries kayaks and a fleet of Zodiac landing craft. An Undersea Specialist operates a remotely operated vehicle (ROV) and sophisticated video equipment, extending access to the underwater world. Public areas : Bistro Bar; Chart Room; Restaurant; Global Gallery; Library, Lounge with full service bar and state-of-the-art facilities for films, slideshows and presentations; Mud Room with lockers for expedition gear, and Observation Lounge. Our "Open Bridge" provides guests an opportunity to meet our Officers and Captain and learn about navigation. Meals : Served in single seatings with unassigned tables for an informal atmosphere and easy mingling. Menu is international with local flair. Cabins : All cabins face outside with windows or portholes, private facilities and climate controls. Expedition Equipment : Zodiac landing craft, kayaks, Remotely Operated Vehicle (ROV), hydrophone, SplashCam, underwater video camera, Crow's Nest remote controlled camera, video microscope, snorkeling gear. Special Features : A full-time doctor, Undersea Specialist, LEX Photo Specialist and Video

Chronicle, Internet Cafe and laundry. Wellness : The vessel is staffed by two Wellness Specialists and features a glass enclosed Fitness Center, outdoor stretching area, two LEXspa treatment rooms



and Sauna.

The Small Cruise Ship Collection

www.small-cruise-ships.com

01432 507 280 (within UK)

info@small-cruise-ships.com | small-cruise-ships.com

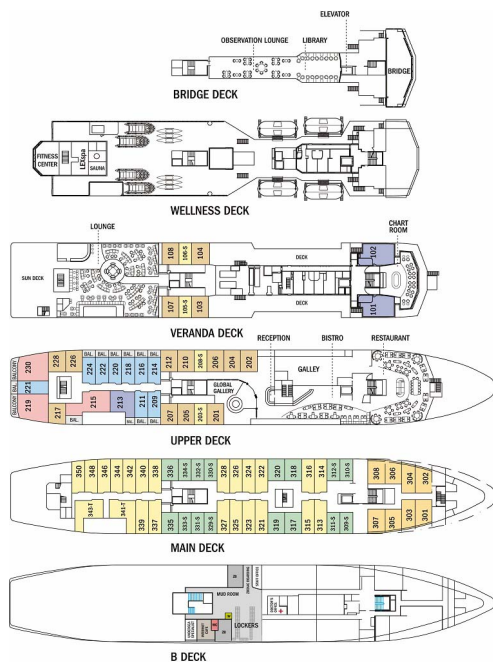
The Small Cruise Ship Collection

www.small-cruise-ships.com

small-cruise-ships.com

info@small-cruise-ships.com

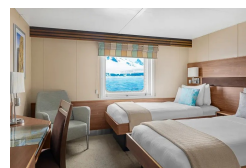
INSIDE YOUR SHIP



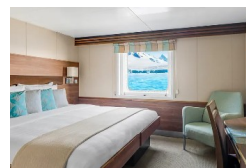
Category 01



Category 02



Category 03



Category 04



Category 05

Category 06



The Small Cruise Ship Collection

www.small-cruise-ships.com



small-cruise-ships.com

info@small-cruise-ships.com

PRICING

24-Aug-2026 to 02-Sep-2026

Category 07	£16544 GBP pp
Category 06	£13931 GBP pp
Category 05	£12186 GBP pp
Category 04	£10336 GBP pp
Category 02	£9376 GBP pp
Category 03	£9754 GBP pp
Category 01	£8717 GBP pp

31-Aug-2027 to 09-Sep-2027

Category 07	£14252 GBP pp
Category 06	£12395 GBP pp
Category 05	£10779 GBP pp
Category 04	£8622 GBP pp
Category 03	£8293 GBP pp
Category 02	£7211 GBP pp
Category 01	£6870 GBP pp

22-Sep-2026 to 01-Oct-2026

Category 07	£16544 GBP pp
Category 06	£13931 GBP pp
Category 05	£12186 GBP pp
Category 04	£10336 GBP pp
Category 03	£9754 GBP pp
Category 02	£9376 GBP pp
Category 01	£8717 GBP pp

01-Oct-2027 to 10-Oct-2027

Category 07	£14516 GBP pp
Category 06	£12536 GBP pp
Category 05	£10461 GBP pp
Category 04	£9644 GBP pp
Category 03	£8446 GBP pp
Category 02	£8098 GBP pp
Category 01	£6870 GBP pp

01-Oct-2026 to 10-Oct-2026

Category 07	£16544 GBP pp
Category 06	£13931 GBP pp
Category 05	£12186 GBP pp
Category 04	£10336 GBP pp
Category 03	£9754 GBP pp
Category 02	£9376 GBP pp
Category 01	£8717 GBP pp



The Small Cruise Ship Collection

www.small-cruise-ships.com

01432 507 280 (within UK)

info@small-cruise-ships.com | small-cruise-ships.com