



The Small Cruise Ship Collection

www.small-cruise-ships.com

small-cruise-ships.com

info@small-cruise-ships.com

EXPLORING SVALBARD CRUISE FROM LONGYEARBYEN

Embark on the Exploring Svalbard luxury cruise, a captivating round trip voyage departing from the world's northernmost town, Longyearbyen, on the island of Spitsbergen. This adventure leads you through the breathtaking landscapes of the Svalbard archipelago, including remote islands such as Nordaustlandet and Edgeøya, before returning to Longyearbyen. Throughout this journey, you'll have the chance to visit intriguing locales such as The North Pole Expeditions Museum in Longyearbyen, which chronicles early polar explorations. Learn about the Svalbard Global Seed Vault, a vital repository preserving seeds from across the globe. As you navigate the Arctic waters, keep an eye out for mesmerizing wildlife like polar bears, ringed seals and walrus. Your luxury cruise experience includes a variety of activities to engage and enrich. Optional kayaking with the Swan Hellenic Expedition Team offers a unique perspective on the stunning Arctic landscapes. As you're enveloped in the natural wonders of Svalbard, take delight in the diverse flora burgeoning under the midnight sun, creating unforgettable memories on this extraordinary voyage.



ITINERARY

Days 0 - 1 - Pre Cruise & Longyearbyen

The world's most northerly town, Longyearbyen, on Spitsbergen, Svalbard's largest island, also claims the most northerly high street and pub. It's home to The North Pole Expeditions Museum chronicling early pole-reaching efforts by air. Nearby, Svalbard Global Seed Vault preserves duplicate seeds from gene banks worldwide. Arctic waters around are populated by whales, including bowheads and narwhals, while walrus are regularly seen hauling out.



Days 2-7 - Svalbard

Svalbard is the kingdom of the polar bears, deep in the Arctic Circle, featuring varied polar landscapes and gargantuan glaciers. Beyond magnificent fjords in the north, the remaining sea ice serves as prime hunting grounds for polar bears. Closer to Longyearbyen, tundra and beaches replace snow and ice. Alongside 600 polar bears, this Arctic hotspot is home to walrus, Svalbard reindeer, ringed seals and arctic fox.

Day 7 - Longyearbyen

The world's most northerly town, Longyearbyen, on Spitsbergen, Svalbard's largest island, also claims the most northerly high street and pub. It's home to The North Pole Expeditions Museum chronicling early pole-reaching efforts by air. Nearby, Svalbard Global Seed Vault preserves duplicate seeds from gene banks worldwide. Arctic waters around are populated by whales, including bowheads and narwhals, while walruses are regularly seen hauling out.

Please Note:

Itineraries are subject to change.



YOUR SHIP: DIANA

YOUR SHIP: Diana

VESSEL TYPE:

LENGTH:

PASSENGER CAPACITY:

BUILT/REFURBISHED:

Launched in 2023, SH Diana provides elegant and spacious 5-star accommodation for 192 guests in 96 spacious staterooms and suites, the vast majority with large balconies. Operated by an onboard team of 140 she provides a high level of personal service, exploring the Mediterranean and its famous sites of antiquity. Now sit back, relax and take a moment to get to know this amazing new ship, purpose-designed for our unique cultural expedition cruises. Named after the Ancient Roman goddess of light, the moon, hunting and the wilderness, SH Diana been specially designed for worldwide cruising to explore the most inspiring and inaccessible places on earth. Building on the outstanding amenities of her sister ships, she adds a dedicated Multifunctional Room next to the Observation Lounge, a Private Dining Room for special occasions, and two tenders which bring guests a comfortable alternative to Zodiacs for expedition landings. A Polar Class 6 ice-strengthened hull combines with extra-large stabilisers to make your journey as comfortable as possible. SH Diana has been designed for immersive experiences, with extensive outside deck areas, multiple observation points and bright, open and relaxing public spaces with unobstructed views. The pleasure and safety of our

guests is paramount at all times, cared for by our attentive crew and seasoned expedition leaders. Cutting edge hygiene technology protects the health of all on board to the highest standards and includes air conditioning with UV sanitisation systems. SH Diana's 96 staterooms, including 11 suites, are each a superbly comfortable home from home and all feature panoramic sea views, a flame-effect fireplace, original works of art, plush couches, premium pocket sprung mattresses, en-suite bathrooms with glass-enclosed rain showers, and Egyptian cotton towels, bathrobes and sheets. A pillow menu offers customised head and neck comfort during rest, while a large flat screen TV, espresso machine with Illy premium coffee, tea making facilities with the finest Kusmi teas, and a minibar with refreshments enhance relaxation at any time. In-room dining is of course available at all hours. Wheelchair access Guests who use wheelchairs must bring their own, as we have only a small number of wheelchairs stored onboard for emergencies. To ensure ease of movement on the ship, wheelchairs and mobility aids must be no wider than 65cm. All mobility or medical equipment brought on board must be capable of being carried safely and must be declared before sailing. To ensure that all guests can safely evacuate during an emergency, guests requiring a wheelchair can only be accommodated in our ADA-accessible cabins. We offer an Oceanview and a Balcony stateroom on Diana. These staterooms are specifically designed to be completely ADA compliant and have a fully operable wheelchair-access wet unit. Diana has two lifts, serving every passenger deck apart from the Stargazing top deck, which is, therefore, more difficult to access, as are the Aft Marina and



Swan's Nest forward observation platform. Also, we don't have special equipment to access the swimming pool, jacuzzi, or sauna. Otherwise, the ship is entirely at your disposal. Many of the expeditions ashore in remote places are by Zodiac. Boarding these boats and returning aboard can present challenges for wheelchair users, as can navigating uneven terrain. These challenges are by no means always insurmountable, though, and our highly experienced crew is trained to provide reliable advice and assistance. They will make every effort to ensure wheelchair-using guests enjoy a memorable experience at each destination. Our general guidance, however, is to recommend wheelchair users travel with a companion for their ease and enjoyment. If you prefer to remain aboard, our panoramic interiors and ample open decks ensure an immersive, intimate experience of your inspiring



surroundings.





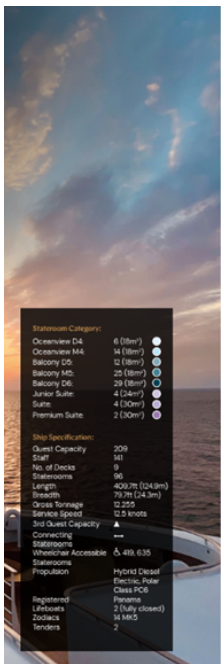
The Small Cruise Ship Collection

www.small-cruise-ships.com

small-cruise-ships.com

info@small-cruise-ships.com

INSIDE YOUR SHIP



Stateroom Category:

Oceanview D4

14 (80m²)

●

Balcony D5

12 (80m²)

●

Balcony M5

25 (80m²)

●

Balcony D6

29 (80m²)

●

Junior Suite

4 (24m²)

●

Suite

4 (30m²)

●

Premium Suite

2 (30m²)

●

Ship Specification:

Guest Capacity

209

Crew

91

No. of Decks

9

Staterooms

98

Length

400.7m (1243ft)

Breadth

29.7m (94.3ft)

Gross Tonnage

12,205

Service Speed

12.5 knots

1st Guest Capacity

▲

Connecting

—

Staterooms

▲ 419, 635

Wheelchair Accessible

—

Staterooms

—

Propulsion

—

Registered

—

Lifboats

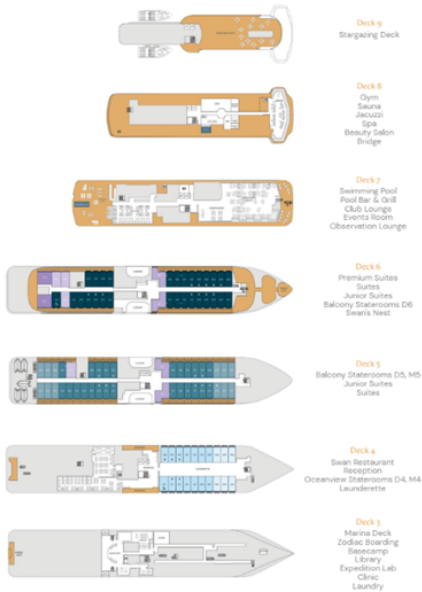
2 (fully closed)

Foodbeats

14 M&S

Tenders

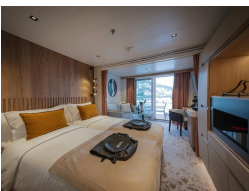
2



Balcony D5 - from



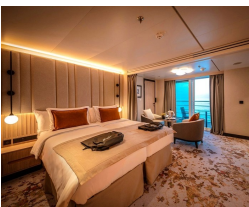
Balcony D6 - from



Balcony M5 - from



Junior Suite - from



Oceanview D4 - from
Premium Suite

Oceanview M4 - from
Suite - from



PRICING

12-Jun-2026 to 20-Jun-2026

Suite - from	£9500 GBP pp
Premium Suite	£10850 GBP pp
Junior Suite - from	£8138 GBP pp
Balcony D6 - from	£7050 GBP pp
Balcony M5 - from	£6788 GBP pp
Balcony D5 - from	£6500 GBP pp
Oceanview M4 - from	£5700 GBP pp
Oceanview D4 - from	£5425 GBP pp

19-Jun-2026 to 27-Jun-2026

Balcony D6 - from	£7040 GBP pp
Suite - from	£9490 GBP pp
Balcony M5 - from	£6790 GBP pp
Premium Suite	£10840 GBP pp
Junior Suite - from	£8140 GBP pp
Balcony D5 - from	£6490 GBP pp
Oceanview M4 - from	£5690 GBP pp
Oceanview D4 - from	£5440 GBP pp

26-Jun-2026 to 04-Jul-2026

Premium Suite	£10840 GBP pp
Oceanview D4 - from	£5440 GBP pp
Balcony M5 - from	£6790 GBP pp
Junior Suite - from	£8140 GBP pp
Balcony D5 - from	£6490 GBP pp
Oceanview M4 - from	£5690 GBP pp
Suite - from	£9490 GBP pp
Balcony D6 - from	£7040 GBP pp

03-Jul-2026 to 11-Jul-2026

Oceanview M4 - from	£5690 GBP pp
Balcony M5 - from	£6790 GBP pp
Junior Suite - from	£8140 GBP pp
Balcony D6 - from	£7040 GBP pp
Premium Suite	£10840 GBP pp
Balcony D5 - from	£6490 GBP pp
Oceanview D4 - from	£5440 GBP pp
Suite - from	£9490 GBP pp



PRICING

09-Jun-2027 to 17-Jun-2027

Balcony D6 - from	£5965 GBP pp
Balcony M5 - from	£5715 GBP pp
Suite - from	£8865 GBP pp
Premium Suite	£10190 GBP pp
Balcony D5 - from	£5415 GBP pp
Oceanview M4 - from	£5165 GBP pp
Oceanview D4 - from	£4890 GBP pp

27-Jun-2027 to 05-Jul-2027

Balcony M5 - from	£5715 GBP pp
Suite - from	£8865 GBP pp
Premium Suite	£10190 GBP pp
Balcony D6 - from	£5965 GBP pp
Balcony D5 - from	£5415 GBP pp
Oceanview M4 - from	£5165 GBP pp
Oceanview D4 - from	£4890 GBP pp

11-Jun-2027 to 19-Jun-2027

Balcony D6 - from	£6650 GBP pp
Balcony M5 - from	£6375 GBP pp
Balcony D5 - from	£6100 GBP pp
Suite - from	£9700 GBP pp
Premium Suite	£11100 GBP pp
Oceanview M4 - from	£5825 GBP pp
Oceanview D4 - from	£5550 GBP pp

04-Jul-2027 to 12-Jul-2027

Balcony D6 - from	£5965 GBP pp
Balcony M5 - from	£5715 GBP pp
Suite - from	£8865 GBP pp
Premium Suite	£10190 GBP pp
Balcony D5 - from	£5415 GBP pp
Oceanview M4 - from	£5165 GBP pp
Oceanview D4 - from	£4890 GBP pp

19-Jun-2027 to 27-Jun-2027

Balcony M5 - from	£5715 GBP pp
Balcony D6 - from	£5965 GBP pp
Balcony D5 - from	£5415 GBP pp
Oceanview M4 - from	£5165 GBP pp
Suite - from	£8865 GBP pp
Premium Suite	£10190 GBP pp
Oceanview D4 - from	£4890 GBP pp