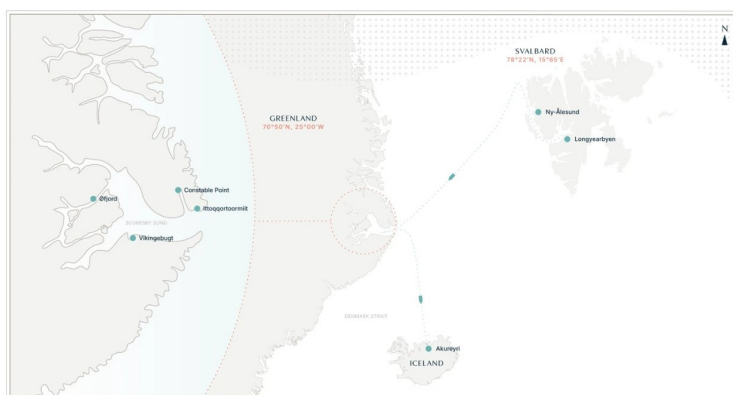




SVALBARD AND GREENLAND SUMMER MICRO CRUISE

Set sail under the midnight sun, for unforgettable wildlife encounters in two of the Arctic 's wildest frontiers. Experience the best of both worlds on this combined Svalbard and East Greenland summer expedition -- an immersive journey through vast ice fjords, towering mountains, incredible wildlife, and some of the last true wildernesses on Earth. _Nature unlimited._ See the High Arctic archipelago's famous wildlife against a pristine backdrop of fairytale fjords, calving glaciers, and snow-capped mountains. Witnessing this endlessly rich habitat - home to reindeer, whales, Arctic foxes, polar bears, and much more - illuminated by the midnight sun is, simply, one of the greatest shows in nature. Your journey continues in the mythical Scoresbysund, the largest fjord system in the world, its labyrinthine pathways strewn with cathedral-size icebergs. Encounter the local wildlife, including musk ox, Arctic foxes, Arctic hares, and maybe even (though they are rare here) polar bears and narwhals. Travelling with just 12 or 44 guests ensures genuine small-group exploration -- fast Zodiac operations, flexible landings, and the freedom to respond to wildlife and weather conditions as they unfold.



ITINERARY

Day 1 Depart Longyearbyen at 4pm.

Sail past striking Fugle fjella (Bird Mountain), a fine example of plateau mountainous landscape, as we leave Longyearbyen.

Days 2 - 4 Remote North and Northwest of Svalbard

This leg of the voyage leads into the remote North and Northwest of Svalbard, heading towards the fabled 80° North.

Venture deep into the polar wilderness, where sweeping fjords, towering glaciers, and historic sites from the whaling and trapping era set the scene.

Explore Poolepynten, a headland on Prins Karls Forland, home to a walrus colony and burial site.

Take a Zodiac cruise of Fjortende Julbreen, a stunning glacier, and Fjortende Julibukta, a scenic bay in Krossfjord.



Days 5 - 7 Greenland Sea

Sailing west across the Greenland Sea and through the Fram Strait, you'll trace the edge of the Arctic pack ice -- a vast, shifting world of white meeting open ocean. This stretch offers the chance, with a bit of luck, to spot polar bears on ice and blue whales and humpbacks as they migrate through these deep waters.

Spend time on deck watching the sea ice drift past, take part in photography workshops and expert-led talks, and soak in the endless glow of the midnight sun as the Arctic horizon stretches calm and uninterrupted around you.

Days 8 - 12 Scoresbysund

Moving further south sailing into the largest fjord system in the world - Scoresbysund and departing Greenland in the afternoon on day 12, depending on weather conditions.

Our plan includes a visit to Ittoqqortoormiit -- a remote Inuit community perched at the edge of the fjord and one of the most isolated settlements in Greenland.

Weather permitting, we depart on the afternoon of Day 12.

Day 13 Iceland

As you sail toward Iceland, settle into the wide open decks -- perfect for unhurried seabird and whale watching as the Arctic gradually softens into the North Atlantic.

Enjoy a final voyage recap, spend time with new friends, and gather on the bridge for a relaxed evening before the captain's farewell dinner brings the journey to a warm close.

Expect lingering Arctic reflections and wrap-up presentations that celebrate the adventure you've shared.

Day 14 Akureyri

Disembarkation in Akureyri marks the start of your onward journey, with the option to travel to Reykjavik or explore the unique attractions of North Iceland.

Nearby islands teem with puffins, while the region offers a blend of geothermal wonders and volcanic landscapes to discover.

Please note:

We don't follow a fixed itinerary

We prefer to embrace spontaneity and make the most of every opportunity nature presents to us. This is how we believe a true, authentic expedition should run. After all, the thrill of adventuring into the unknown is more rewarding than a journey that runs on tracks!

So all our listed itineraries are for guidance only. The day-to-day activities may vary depending on the ice, the weather, and the wildlife. Landings are subject to site availability and permissions, and always in line with AECO regulations.



The Small Cruise
Ship Collection

www.small-cruise-ships.com

small-cruise-ships.com

info@small-cruise-ships.com

YOUR SHIP: POLAR ATHENA

YOUR SHIP: Polar Athena

VESSEL TYPE:

LENGTH:

PASSENGER CAPACITY:

BUILT/REFURBISHED:

Built for true polar exploration, MV Polar Athena combines the rugged power of an icebreaker with the intimacy of small-group travel. With the highest 1A Super ice-class rating and space for just 42 guests, she offers one of the most personal Antarctic experiences available. Born as a research vessel and reimagined for modern-day adventurers, Polar Athena slices through heavy sea ice with ease, offering unmatched agility, comfort, and access to remote destinations. Her small size ensures that all guests can disembark together for Zodiac excursions, maximising time ashore and embracing the spontaneity of wildlife encounters and shifting weather. On board, guests enjoy Scandinavian-style comfort with thoughtfully designed cabins, panoramic observation lounges, and a warm, family-like atmosphere. Whether you're spotting whales from the elevated bow deck, relaxing in the wellness area's hot tub, or enjoying freshly prepared meals in the cosy dining room, Polar Athena offers immersive exploration without the crowds. Her bridge lounges welcome guests throughout the voyage, offering behind-the-scenes insight and a shared sense of purpose with the crew, making each journey feel like a genuine expedition into the unknown.



The Small Cruise
Ship Collection

www.small-cruise-ships.com

01432 507 280 (within UK)

info@small-cruise-ships.com | small-cruise-ships.com



The Small Cruise
Ship Collection

www.small-cruise-ships.com

small-cruise-ships.com

info@small-cruise-ships.com

INSIDE YOUR SHIP



Classic Suite



Classic Twin



Signature Single



Signature Suite



The Small Cruise
Ship Collection

www.small-cruise-ships.com

01432 507 280 (within UK)

info@small-cruise-ships.com | small-cruise-ships.com



The Small Cruise
Ship Collection

www.small-cruise-ships.com

small-cruise-ships.com

info@small-cruise-ships.com

PRICING

27-Jul-2026 to 09-Aug-2026

Signature Suite	£19635 GBP pp
Signature Single	£18095 GBP pp
Classic Suite	£18095 GBP pp
Signature Twin	£15399 GBP pp
Classic Twin	£14629 GBP pp



The Small Cruise
Ship Collection

www.small-cruise-ships.com

01432 507 280 (within UK)

info@small-cruise-ships.com | small-cruise-ships.com