



The Small Cruise Ship Collection

www.small-cruise-ships.com

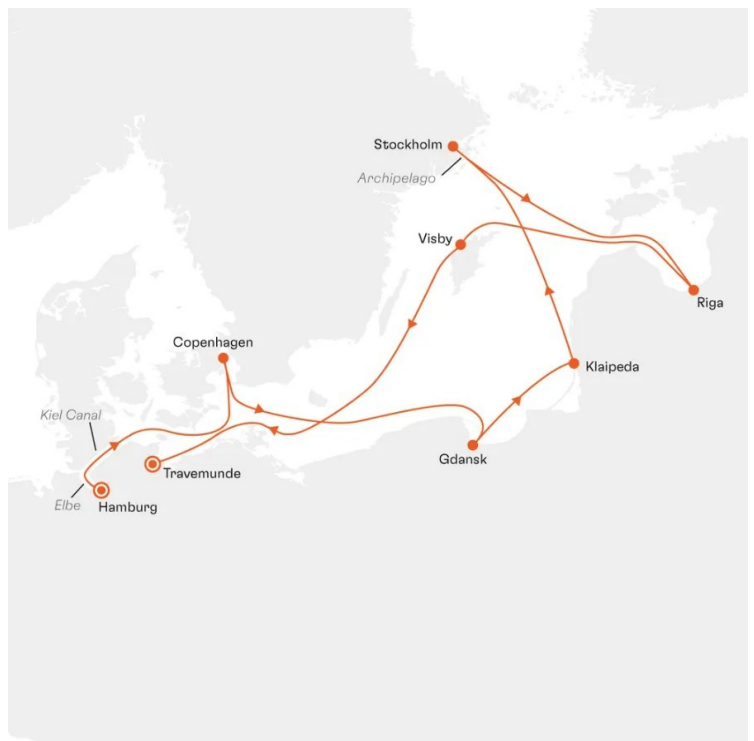


small-cruise-ships.com

info@small-cruise-ships.com

SUMMERTIME BALTIC BREEZE SMALL SHIP CRUISE

Whether it's design in Stockholm, culinary delights in Copenhagen or the rich history of Gdansk and Riga: along the coasts of the Mare Balticum, the classics of the Baltic Sea will delight you. With its picturesque lanes, Visby on Gotland is a charming insider tip.



ITINERARY

Day 1 Individual travel arrangements to cruise departure point Hamburg/Germany, departure 18.30 hrs

Hamburg, the "pearl of the north", has a lively atmosphere and rich history. From the vibrant harbour with its majestic ships to the historic red-brick warehouse district, the city features a highly distinctive flair. The Alster, surrounded by green banks, invites you to take relaxing boat trips. The historic old town, with its charming lanes and imposing town hall, exudes a sense of tradition. Culturally, Hamburg offers a variety of museums,

The Small Cruise Ship Collection

www.small-cruise-ships.com

01432 507 280 (within UK)

info@small-cruise-ships.com | small-cruise-ships.com



The Small Cruise Ship Collection

www.small-cruise-ships.com



small-cruise-ships.com

info@small-cruise-ships.com

theatres and concert halls that inspire visitors with art and music in abundance. The famous Reeperbahn in the St. Pauli district attracts visitors with its diverse nightlife. Hamburg is a city that manages to combine tradition and modernity in a fascinating way.

Day 2 Daytime passage through the Kiel Canal/Germany

The Kiel Canal is like a ribbon cutting through the landscapes of Schleswig-Holstein and linking the North Sea to the Baltic Sea between Brunsbüttel and Kiel. At just under 100 km (62 mi.) long, the canal is the busiest man-made waterway in the world and cuts up to 900 km (560 mi.) off shipping routes around Denmark. Opened in 1895 and originally known as the Kaiser Wilhelm Canal, the canal makes its way past little villages, idyllic meadows and extensive pasture land. The two locks are masterpieces of engineering and have also been in operation since 1895, protecting the canal from changing water levels caused by the tides or by the winds off the North Sea and Baltic Sea.

Day 3 Copenhagen/Denmark, 08.00 - 24.00 hrs

With its mix of world-famous landmarks and modern charm, Copenhagen appeals to every visitor. The Little Mermaid at Langelinie is the city's most famous attraction. The colourful waterfront at Nyhavn with its lively cafes is a great place to while away some time, while Amalienborg Palace and the Tivoli amusement park will take you on a journey through the past and present of the Danish capital. In its majestic setting amidst well-kept rose gardens, Rosenborg Castle is home to the Danish Crown Jewels. As well as its historic sites, Copenhagen is a paradise for design fans: the cubist Royal Library and the Royal Opera House are outstanding examples of modern Scandinavian architecture.

Day 4 Relaxation at sea

Day 5 Gdansk/Poland, 08.00 - 18.00 hrs

Surrounded by wild natural landscapes and rugged cliffs lies Gdansk - a city full of history, culture and unique scenery. The city looks back over more than 1,000 years of history, including rule by the Teutonic Order, its heyday as a wealthy Hanseatic city, and the partitions of Poland in the 18th century. Today, Gdansk is a cosmopolitan city with an interesting past. A walk through the old city gates, through the Long Market or along the Motlawa provides a variety of views and leads you to many shops, restaurants and cafes, where you can take a relaxing break. Gdansk combines historic grandeur with modern charm and is a real highlight on the Polish Baltic coast.

Day 6 Klaipeda/Lithuania, 07.00 - 19.00 hrs

Once known as Memel, Klaipeda is an inviting place for a relaxing stroll through its restored old town and past charming half-timbered houses along medieval cobbled streets. The former City Hall, where the Prussian King Friedrich Wilhelm II and his wife Queen Luise took up residence in 1807/08 to escape from Napoleon, is particularly worth a visit. The theatre, which Richard Wagner visited in 1836, is also captivating thanks to its historic charm. In front of the theatre is the Simon Dach fountain with a statue of Annchen von Tharau, which was faithfully restored in 1989. In the surrounding area, you can see the Curonian Spit with its shifting sand dunes which inspired Thomas Mann - an impressive example of the unspoilt beauty of Lithuania.

Day 7 Stockholm/Sweden, arrival 16.00 hrs

Stockholm is an enchanting capital thanks to its unique location on 14 islands, which are connected to each other by a



The Small Cruise Ship Collection
www.small-cruise-ships.com

01432 507 280 (within UK)

info@small-cruise-ships.com | small-cruise-ships.com



The Small Cruise Ship Collection

www.small-cruise-ships.com



small-cruise-ships.com

info@small-cruise-ships.com

multitude of bridges. Set between Lake Malaren and the Baltic Sea, the city is often referred to as the "Venice of the North". In the old town, Gamla Stan, with its winding streets and historic buildings, you will find stylish bistros offering New Nordic Cuisine. On the neighbouring island is the impressive baroque Royal Palace, while the Vasa Museum with its restored war ship brings the city's fascinating maritime history to life.

Day 8 Stockholm, departure 17.00 hrs

Day 9 Riga/Latvia, arrival 14.00 hrs

At the estuary of the River Daugava lies a pearl of the Baltic: Riga offers an incomparable mix of history and modernity. While magnificent art nouveau facades adorn the outer districts of Latvia's capital city, the enchanting old town with its well-preserved medieval buildings was designated a UNESCO World Heritage Site in 1997. At its centre near the House of the Blackheads, the tall tower of St. Peter's Church rises high above the rooftops and is a magnificent sight. Riga is particularly lively thanks to its varied music and art scene - western influences combine with traditional Latvian elements and ensure its unique charm.

Day 10 Riga, departure 14.00 hrs

Day 11 Visby/Gotland/Sweden, 08.30 - 19.00 hrs

Visby is located on Gotland, Sweden's largest island, and is considered one of the best-preserved Hanseatic towns - its medieval lanes and half-timbered houses taking visitors back to times long past. A 3 km (1.9 mi.) long wall surrounds the old town, where old merchants' houses and romantic, stepped gabled houses line up side by side. The imposing cathedral from the twelfth century is a landmark in Visby's skyline, attracting

visitors from afar. In summer, countless roses bloom in the gardens, making the town's historic atmosphere even prettier with their blaze of colour.

Day 12 Relaxation at sea

Day 13 Travemunde/Germany, arrival 07.00 hrs Individual travel arrangements from cruise arrival point

Travemunde has a fascinating history as a traditional seaport. Today, it attracts visitors with its charming Baltic Sea flair. It's an ideal starting point for boat trips, walks along the beach and discovering nearby Lubeck. Travemunde is located about 70 km (43 mi.) from Hamburg and 280 km (174 mi.) from Berlin.

Please note:

Itineraries are subject to change.



The Small Cruise Ship Collection

www.small-cruise-ships.com

01432 507 280 (within UK)

info@small-cruise-ships.com | small-cruise-ships.com



The Small Cruise Ship Collection

www.small-cruise-ships.com



small-cruise-ships.com

info@small-cruise-ships.com

YOUR SHIP: EUROPA

YOUR SHIP: Europa

VESSEL TYPE:

LENGTH:

PASSENGER CAPACITY:

BUILT/REFURBISHED:

Extensive space for a maximum of 400 guests A crew-to-guest ratio of almost one to one Outside suites only, most with a veranda Five restaurants for the ultimate in culinary indulgence - including THE GLOBE by three-star chef Kevin Fehling Top-class entertainment: experience international artists and experts live on board EUROPA Refresh: new fitness and wellness concepts for even more well-being MS EUROPA is an award-winning luxury cruise ship renowned for setting global standards in refined small-ship cruising. Accommodating a maximum of just 400 guests, the ship offers an intimate and highly personalised experience, supported by an almost one-to-one crew-to-guest ratio. Designed around the concept of casual luxury, EUROPA combines spacious surroundings, attentive service, and elegant all-suite accommodation, with all suites featuring ocean views and most offering private verandas. Onboard, guests can enjoy five exceptional restaurants, including fine dining concepts created in collaboration with acclaimed chefs, alongside world-class entertainment, wellness facilities, and thoughtfully curated enrichment experiences. The ship's smaller size allows access to unique itineraries and exclusive ports beyond the reach of larger vessels, while recent EUROPA Refresh

enhancements have introduced updated fitness and wellness concepts for an even more elevated onboard experience. Blending sophistication, comfort, and flexibility, MS EUROPA delivers a truly premium voyage to destinations



worldwide.

The Small Cruise Ship Collection
www.small-cruise-ships.com

01432 507 280 (within UK)

info@small-cruise-ships.com | small-cruise-ships.com



The Small Cruise Ship Collection

www.small-cruise-ships.com



small-cruise-ships.com

info@small-cruise-ships.com

INSIDE YOUR SHIP

Penthouse Deluxe Suite

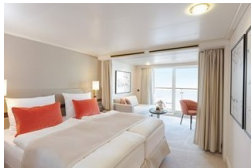
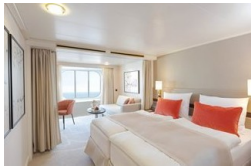


SPA Suite



Suite with panorama window

Veranda Suite Cat. 4-5





The Small Cruise Ship Collection

www.small-cruise-ships.com



small-cruise-ships.com

info@small-cruise-ships.com

PRICING

18-Jul-2027 to 30-Jul-2027

Suite with panorama window	£5385 GBP pp
Veranda Suite Cat. 4-5	£6239 GBP pp
Veranda Suite Cat. 6-7	£7695 GBP pp
SPA Suite	£8329 GBP pp
Penthouse Deluxe Suite	£12985 GBP pp



The Small Cruise Ship Collection

www.small-cruise-ships.com

01432 507 280 (within UK)

info@small-cruise-ships.com | small-cruise-ships.com