



SOUTH SPITSBERGEN (NOORDERLICHT)

Sailing northwards we visit Magdalenafjord, one of the most beautiful places on Spitsbergen, with many impressive glacier faces. During a shore visit we will view the remains of 17th century English whaling activities. We can also visit some big seabird colonies particularly noteworthy for their Little Auk.



ITINERARY

Day 1: Embarkation and departure from Longyearbyen

Set sail for Alkhornet, a high cliff where we often see Arctic fox and reindeer. We continue to Trygghamna to visit the remains of a 17th century English whaling station and an 18th century Russian Pomor station.

Day 2-3: Trygghamna



We leave Trygghamna early in the morning and sail to the north side of Bell Sund. Bell Sund is a fjord system with two major branches (Van Mijenfjord, Van Keulenfjord) and one smaller side bay (Recherchefjord). The geology is fascinating and has created amazing landscapes, such as the long, narrow island of Akseløya that blocks Van Mijenfjord almost completely. In Fridtjofhamna, the calving glacier Fridtjofbreen is surrounded by picturesque mountains. The rich wildlife of the area has attracted hunters throughout several centuries - we will walk in their footsteps and see remains of their huts - for example, at Ahlstrandhalvøya. Recherchefjord is one of the places in Spitsbergen with the highest concentration of historical sites, dating back to 17th century whalers and the mining period of the early 20th century. The Recherchebreen glacier ends at a lagoon. We have also seen Beluga (white whales) in this area.

Day 8: Arrival and disembark in Longyearbyen

Day 4-5: Hornsund

We sail into the labyrinth of side fjords in Hornsund. Behind Brepollen, a large glacial deposit at the head of the fjord; we will sail along a beautiful glacier front with good chances of seeing Bearded seal and Polar bear. On Sofiakammen we can come quite close to colonies of Kittiwakes and Brünnichs guillemots. The geological formations in this area are very spectacular and colourful. We will also pay a visit to the Polish research station at Isbjørnhamna, where the friendly crew will discuss their scientific programs.

Day 6: To be confirmed

Day 7: Isfjord system

On our return voyage we sail into the inner reaches of the Isfjord system, or pay a visit to the Russian settlement Barenstzburg.



The Small Cruise
Ship Collection

www.small-cruise-ships.com

small-cruise-ships.com

info@small-cruise-ships.com

YOUR SHIP: NOORDERLICHT

YOUR SHIP:

Noorderlicht

VESSEL TYPE:

LENGTH:

PASSENGER CAPACITY:

BUILT/REFURBISHED:

The Noorderlicht was originally built in 1910 in Flensburg, Germany as a three-masted schooner. For most of her existence she served as a light-vessel on the Baltic. In 1991 the present owners purchased the hull and re-rigged and refitted her thoroughly, under the rules of "Register Holland". The Noorderlicht now has a well-balanced two-masted schooner rig and is capable of sailing the seven seas. The qualified captains have a great experience of the oceans. Together with the rest of the crew, they will do everything possible to ensure that you have a wonderful and unforgettable journey. Ice class: The Noorderlicht has no ice class. She was anchored year around near Flensburg (Germany). Due to heavy ice conditions in the winter time, the bow of the Noorderlicht was strengthened. The vessel is not an ice breaker but has a strengthened bow.



The Small Cruise
Ship Collection

www.small-cruise-ships.com

01432 507 280 (within UK)

info@small-cruise-ships.com | small-cruise-ships.com



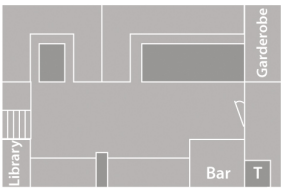
The Small Cruise
Ship Collection

www.small-cruise-ships.com

small-cruise-ships.com

info@small-cruise-ships.com

INSIDE YOUR SHIP



s/v Noorderlicht deckplan		
<div> twin shared inside</div>	<div> upper and lower berth</div>	<div><div><div>T Toilet</div><div>S Shower</div></div></div>



The Small Cruise
Ship Collection

www.small-cruise-ships.com

01432 507 280 (within UK)

info@small-cruise-ships.com | small-cruise-ships.com



The Small Cruise Ship Collection

www.small-cruise-ships.com



small-cruise-ships.com

info@small-cruise-ships.com

PRICING



The Small Cruise
Ship Collection

www.small-cruise-ships.com

01432 507 280 (within UK)

info@small-cruise-ships.com | small-cruise-ships.com