



SOUTH ISLAND AND FIORDLANDS OF NEW ZEALAND - FROM BLUFF TO WELLINGTON

Experience the beauty and rich heritage of New Zealand's southern island aboard Coral Adventurer on this 12-night expedition voyage. This journey takes you into some of the country's most remote landscapes; from deep, misty fiords carved by ancient glaciers and framed by towering cliffs, to island bird sanctuaries and historic coastal towns. With our expert guides, enjoy a rewarding mix of scenic cruising, active hikes, and close encounters with nature. Whether kayaking in secluded bays or walking through native forests alive with wildlife, each day offers a new way to connect with the wild places and stories of southern New Zealand.



ITINERARY

Depart Bluff | Motup hue

Your journey begins in Queenstown, where you'll meet your fellow travellers and expedition team at QT Queenstown (formerly Rydges Lakeside) at 10:30am for check-in and a warm welcome, with tea, coffee and morning tea. From here, we will travel south to Bluff - the southernmost settlement on New Zealand's mainland and gateway to Stewart Island. Alternatively, bluff pickup can be arranged. Please speak to our reservations team for more information.

You'll board Coral Adventurer in the afternoon and settle in before setting sail along the rugged southern coastline. This evening, enjoy Captain's welcome drinks and take in views of Stirling Point, marking the start of your journey.

Dusky Sound | Tamatea



The Small Cruise Ship Collection

www.small-cruise-ships.com

small-cruise-ships.com

info@small-cruise-ships.com

Today we will celebrate Christmas and Boxing Day exploring the remote wilderness of Tamatea/Dusky Sound, first sighted by Captain Cook in 1770. With sheer cliffs, tumbling waterfalls, and a dense rainforest reflected in glassy waters, this vast fiord offers spectacular scenery and a rich history. Join our expedition team for zodiac and Xplorer trips to hidden inlets and wildlife colonies, with opportunities to spot fur seals, Fiordland crested penguins, dolphins, and native birdlife. We will then land at Astronomer's Point, where Cook's crew once charted the stars. Take part in guided walks, waterfall viewing, kayaking, and a cold-water swim to uncover the true remoteness of this region.

On Christmas evening, we'll come together to celebrate the beginning of our journey with a festive dinner.

[Doubtful Sound | Patea](#)

Wake to the silence of Patea, where this deep, long and narrow inlet, with cliffs, has been formed by glacial erosion over millions of years. We are currently in one of New Zealand's most pristine environments. Cruise past the outer Seal Islands and spot dolphins, fur seals, and possibly the elusive Fiordland crested penguin or join a guided hike between Deas Cove and Neck Cove and take polar plunge in the cool, clear and shallow waters.

[Stewart Island | Rakiura](#)

Spend two days exploring Stewart Island/Rakiura, a haven of native bush, rare wildlife, and quiet charm.

Explore Ulva Island, where you might spot a kiwi, bush robins and saddlebacks in their natural habitat. Enjoy guided walks on the Rakiura Track - one of New Zealand's Great Walks - or visit the remains of a Norwegian whaling station. There's time to

discover the island's only township, Oban, with its quirky arts scene, community-run theatre, and friendly locals.

Optional Extra: Enjoy a scenic flight with an expert pilot taking in the views of Rakiura National Park, the Rugged Ranges and a landing on the golden sands of Mason's Bay.

[Dunedin | tepoti](#)

Today, we arrive in Dunedin, a city shaped by both Scottish heritage and M ori culture. With its grand stone architecture, botanical gardens, and steep hills, it offers a glimpse into New Zealand's colonial past. Throughout the day, guests will experience Dunedin's unique blend of culture and history on a guided tour. During free time, explore at your own pace, perhaps visit the local art gallery, grab a bite at a local cafe or simply take in the scenery.

[Akaroa](#)

Nestled in an ancient volcanic crater, Akaroa is New Zealand's only French settlement, retaining its charming European character. Cottages and street names nod to its French heritage, while the harbour teems with marine life. Take a scenic harbour cruise to spot Hector's dolphins, fur seals, sea bird colonies and potentially the endangered Little Penguin.

[Kaik ura](#)

Framed by the snow-capped Seaward Kaik ura Ranges, the town of Kaik ura is globally renowned for its whale watching and marine encounters. Once a whaling centre, today Kaik ura is a model for eco-tourism and sustainable wildlife conservation. Join a local operator for a guided whale-watching tour, with the chance to see sperm whales, dolphins, and even blue whales. On shore, take a walk along the scenic Kaik ura Peninsula. This



evening, we celebrate the journey so far with festivities on board.

[Ship Cove | Meretoto](#)

We conclude our voyage in the tranquil waters of the Marlborough Sounds, a network of sunken river valleys cloaked in native bush. Anchor at historic Ship Cove (Meretoto), where Captain Cook spent more than 170 days during his Pacific voyages. Learn about the site's significance through storyboards and interpretation on shore before choosing between two activities: a guided walk along the scenic Queen Charlotte Track from Ship Cove to Resolution Bay, or birdwatching on predator-free Motuara Island. This final day blends nature, history, and the serenity of New Zealand's northernmost sounds.

[Arrive at Wellington](#)

This morning farewell Coral Adventurer, crew, and new-found friends as we disembark at 8:00am. An included post-cruise transfer to the airport or CBD will be available.

[Please note:](#)

This itinerary is an indication of the destinations we visit and activities on offer. Throughout the expedition we may make changes to the itinerary as necessary to maximise your expeditionary experience. Allowances may be made for seasonal variations, weather, tidal conditions, and any other event that may affect the operation of the vessel. Coral Expeditions suggests that you do not arrive on the day of embarkation or depart on the day of disembarkation due to any changes that may occur in scheduling.



The Small Cruise Ship Collection

www.small-cruise-ships.com

small-cruise-ships.com

info@small-cruise-ships.com

YOUR SHIP: CORAL ADVENTURER

YOUR SHIP: Coral Adventurer

VESSEL TYPE:

LENGTH:

PASSENGER CAPACITY:

BUILT/REFURBISHED:

Launched in 2018 with her maiden voyage in 2019, Coral Adventurer has been designed and built to take you closer to unspoilt vistas in comfort, style and safety. A culmination of two years of design and three decades of passion for expedition cruising. BIGGER IS NOT BETTER At a time when cruise ships get larger and glitzier, we remain stubbornly compact and intimate. Our ships are designed to take you to unspoilt destinations not accessible to large ships. We want you to have the luxury of space, dine with whom you please, or find your quiet corner on deck. So Coral Adventurer has just 60 spacious cabins. This preserves the intimate atmosphere we are known for without sacrificing the stability and comfort of a true ocean going vessel. BUILT FOR DISCOVERY The Coral Adventurer features the trademark dual 'Xplorer' tenders cradled on a hydraulic platform slung off the back of the ship, enabling our guests to go ashore in comfort and ease. The shallow draft of the ship enables us to go closer to shore than larger ships. Together with a renowned expedition team, this new ship will offer the most advanced expedition capabilities of any small ship afloat. BUILT FOR COMFORT With active stabilisers dampening sea motion, mostly balcony cabins, and interiors designed with the colours and

textures of tropical Queensland, the Coral Adventurer is a comfortable ship. She features promenade decks, generous communal areas that accommodate all guests, a passenger elevator, and an open kitchen where you can observe our chefs whip up small batch cuisine from locally sourced ingredients. BUILT FOR PERSONAL SERVICE The Coral Adventurer will continue a proud tradition of Australian flagged vessels with friendly and professional Australian crew. The onboard atmosphere remains refreshingly informal and intimate. Take your seat at our bridge lounge, chat with the captain at your leisure or accompany our chefs on a market tour. Food and wine features Single seating dining area with communal 'wine table' finished with Australian stone; serving buffet breakfast and lunch, and multi-course table d'hote dinners Showcase galley visible to guests for fresh small-batch cuisine featuring Australian produce Multiple indoor and outdoor bars, including the Explorer bar on the sundeck for sunset drinks with 180 degree views Curated wine cellar featuring modestly priced boutique wines for daily drinking and exceptional vintage Australian reds. Guest comfort All outside guest cabins with en-suite bathrooms; majority have private balcony Active stabilisers to dampen sea motion Gym equipped with elliptical trainers and treadmills Passenger elevator Wi-Fi available in all



guest areas

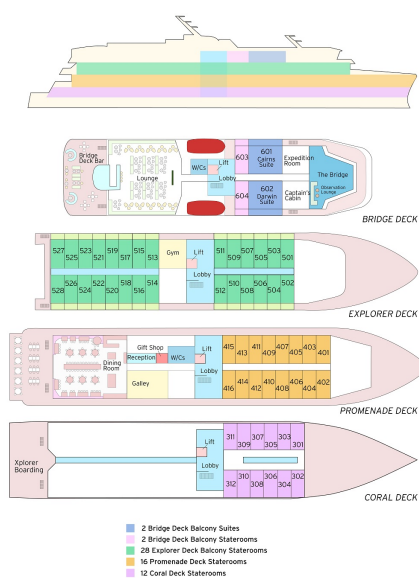
The Small Cruise Ship Collection

www.small-cruise-ships.com

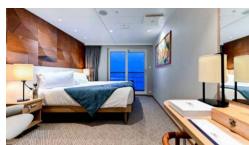
small-cruise-ships.com

info@small-cruise-ships.com

INSIDE YOUR SHIP



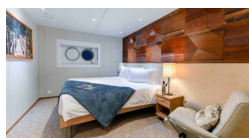
BRIDGE DECK BALCONY STATEROOM



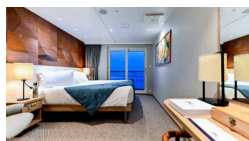
BRIDGE DECK BALCONY SUITE



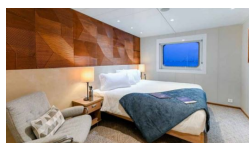
CORAL DECK STATEROOM



EXPLORER DECK BALCONY STATEROOM



PROMENADE DECK STATEROOM





The Small Cruise
Ship Collection

www.small-cruise-ships.com

small-cruise-ships.com

info@small-cruise-ships.com

PRICING

24-Dec-2026 to 03-Jan-2027

EXPLORER DECK BALCONY STATEROOM	£7710 GBP pp
BRIDGE DECK BALCONY SUITE	£10865 GBP pp
PROMENADE DECK STATEROOM	£5995 GBP pp
CORAL DECK STATEROOM	£4995 GBP pp
BRIDGE DECK BALCONY STATEROOM	£8445 GBP pp



The Small Cruise
Ship Collection

www.small-cruise-ships.com

01432 507 280 (within UK)

info@small-cruise-ships.com | small-cruise-ships.com