



The Small Cruise
Ship Collection

www.small-cruise-ships.com

small-cruise-ships.com

info@small-cruise-ships.com

SOUTH EAST AFRICAN HORIZONS - KENYA, MADAGASCAR, MOZAMBIQUE & SOUTH AFRICA CRUISE

Set sail from Mombasa, cruising the scenic East African coast as you explore the Mozambique coast to vibrant Maputo. Relax on Zanzibar and Nosy Be's beaches, explore Mahajanga's colonial architecture, Toliara's mangroves, Kilwa Kivinje's ancient sites and discover Morondava's baobab trees. From Swahili influences to colonial history, experience the Western Indian Ocean's diverse culture. Your journey ends in cosmopolitan Cape Town, South Africa.



The Small Cruise
Ship Collection

www.small-cruise-ships.com

01432 507 280 (within UK)

info@small-cruise-ships.com | small-cruise-ships.com



Cosmopolitan Zanzibar Island, or Unguja, known as the Spice Island, features Zanzibar City's UNESCO-listed Stone Town (Mji Mkongwe)--a lively warren of narrow streets with 18th- and 19th-century buildings. Highlights include the Old Fort, the House of Wonders, and a spice market with stalls heaped with locally grown spices like nutmeg and cinnamon. Nearby, Jozani Chwaka Bay National Park is home to the red colobus monkey, unique to Zanzibar.

DAY 3 KILWA KIVINJE

Kilwa Kivinje, on Tanzania's southern coast, was a medieval Swahili coast trading hub. Founded in the 8th century, Kilwa Kivinje thrived in the 13th and 14th centuries as a centre for ivory and gold. Today, it provides insight into medieval East Africa's opulence, with dhows in the harbour and spice markets amid jungle and mangrove estuaries. The Great Mosque and Husuni Kubwa, The Sultan's African Palace, are UNESCO World Heritage Site ruins.

DAY 4 DAY AT SEA

Sea days are rarely dull. Take the time to sit back and let the world go by. The ship's observation decks provide stunning views of the passing ocean. A day at sea gives you the

ITINERARY

DAY 0 PRE CRUISE

DAY 1 MOMBASA

A dynamic coastal metropolis, Mombasa's rich history comes from a beguiling blend of cultures. Over centuries, Arabs, Portuguese, Asians, and British settlers coexisted in the old town, blending African, European, and Asian architectural styles. Perched above the sea, Fort Jesus was built by the Portuguese in the 1590s to protect the city, while the bustling spice market is packed with fragrant stalls selling pepper, ginger and cardamom.

DAY 2 ZANZIBAR



The Small Cruise
Ship Collection

www.small-cruise-ships.com

small-cruise-ships.com

info@small-cruise-ships.com

opportunity to mingle with other passengers and share your experiences of this incredible trip or head to our library which is stocked full of reference books. Get an expert's view in one of our on-board lectures or perhaps perfect your photography skills with invaluable advice from our onboard professional photographers.

DAY 5 NOSY BE

Sandy swimming beaches, biodiverse jungle, and vivid blue crater lakes are among the highlights of verdant Nosy Be island off Madagascar's northern coast. In Hell-Ville port, remnants of French colonial architecture charm visitors. Nearby, Lokobe Reserve beckons with guided pirogue canoe tours, where black lemurs climb ancient trees and vibrant panther chameleons, growing about a foot and a half long, play hide-and-seek in the lush foliage.

DAY 6 MAHAJANGA

The lively northern port of Mahajanga (Majunga) is known for its charming French colonial and Arabian architecture as well as a broad seafront promenade lined with coconut palms. A gigantic landmark baobab tree towers near the water. Long sandy beaches stretch north towards Cirque Rouge, a remarkable natural amphitheatre whose crumbling rocks are a blend of red, ochre and pale pink, and are at their most dramatic at sunset.

DAY 7 NOSY VAO

The remote 1.97 km-long Nosy Vao, located 70 km north of Maintirano, offers an unspoilt tropical escape off Madagascar's northeast coast. With surrounding coral reefs and few visitors, Nosy Vao provides a peaceful retreat. Terns flock to the reefs, while lemurs inhabit the savannas, and palm trees dot the interior. Vezo fishers build temporary shelters and move between islands, fishing for sharks.

DAY 8 MORONDAVA

The relaxed west coast town of Morondava is the gateway to the iconic Avenue of the Baobabs. Lining a bumpy track, this striking grove of centuries-old giants - often nicknamed upside-down trees - is especially popular at sunset, when the trunks cast long shadows on the ground. To the south, Kirindy Mitea National Park is a protected coastal reserve home to several species of lemur along with the rare fossa, a close relation of the mongoose.

DAY 9 TOLIARA

Mangroves, beaches and an offshore coral reef surround Toliara



The Small Cruise
Ship Collection

www.small-cruise-ships.com

01432 507 280 (within UK)

info@small-cruise-ships.com | small-cruise-ships.com



The Small Cruise
Ship Collection

www.small-cruise-ships.com

small-cruise-ships.com

info@small-cruise-ships.com

(Tulear), near the mouth of the Onilahy River. Just southeast of the city, the Arboretum d'Antsokay was created by a Swiss botanist in 1980 amid a swathe of spiny forest. Garden guides lead you past more than 900 mostly endemic plant species, flitting butterflies or lemurs tucked into branches. Within the port, a fascinating small museum is dedicated to local marine life.

DAY 10-11 DAY AT SEA

Days at sea are the perfect chance to relax, unwind and do whatever takes your fancy. So whether that is going to the gym, visiting the spa, trying to spot a whale from the deck, reading a chapter or two, or simply topping up your tan, these blue sea days are the perfect balance to the green days spent exploring on land.

DAY 12 RICHARDS BAY

A busy port town with a deep natural harbour, Richards Bay is surrounded by extensive wetlands sheltering diverse birdlife. A hotspot on the Zululand Birding Route, it's a haven for rare species like cuckoo hawks and pygmy geese. The town's large lagoon becomes a cooling spot for hippos and crocodiles. Meanwhile, Alkantstrand Beach offers laid-back charm with long stretches of golden sand and gentle waves.

DAY 13 DURBAN

South Africa's third-biggest city, Durban is friendly and cosmopolitan. Durban's golden mile is the heartbeat of the city with long sandy beaches and rickshaw rides. Durban's Indian District awakens the senses with its aromatic curry houses and spice stalls. Peaceful Durban Botanic Gardens is renowned for its orchid and palm collections. Nearby Umgeni River Bird Park is home to around 200 species, from vibrant parrots to majestic eagles.

DAY 14 EAST LONDON

On South Africa's Eastern Cape, East London is celebrated for its beautiful beaches, including Nahoon and Cove Rock. The city features the Buffalo Pass, a scenic road that winds through a lush valley, crossing the Buffalo River. The East London Museum showcases fossilised human and animal footprints and artefacts from the Xhosa-speaking people. In the surrounding areas, numerous game reserves provide habitat to elephants, lions, zebras and more.

DAY 15 PORT ELIZABETH



The Small Cruise
Ship Collection

www.small-cruise-ships.com

01432 507 280 (within UK)

info@small-cruise-ships.com | small-cruise-ships.com



On the western edge of Algoa Bay, Port Elizabeth (Gqeberha) is an unassuming city with long stretches of beaches and pockets of Victorian architecture. Pods of frolicking dolphins swim close to shore. Just outside town, Kragga Kragga Game Park is home to roaming white rhinos and cheetahs, while guided game drives at Addo Elephant National Park (about 70 km northeast) offer thrilling encounters with the world's largest land mammal.

DAY 16 MOSSEL BAY

Set on a hillside, the laid-back seaside town of Mossel Bay was the first place where Europeans made landfall in South Africa in 1488. The area's history unfolds at Bartolomeu Dias Museum Complex, which contains maritime displays, 19th-century stone cottages and a botanical garden. Nearby, Santos Beach is a wide sandy stretch for swimming and watersports. Southern right whales calve in the bay's calm waters between July and October.

DAY 17 HERMANUS

Hermanus, a seaside town southeast of Cape Town, enchants visitors with its breathtaking landscapes and vibrant marine life. Within Fernkloof Nature Reserve, a 12 km cliffside pathway provides views of seasonal whale migrations and bustling penguin colonies. The Old Harbour, now a museum,

encompasses the history of the old harbour, a fishermen's village and the Whale House Museum. The town's bars and restaurants promote local wines and seafood.

DAY 18 CAPE TOWN

Ending our epic transatlantic journey with one of the most spectacular city sceneries in Africa . Domiated by Table Mountain , Cape town is a cosmopolitan city with plenty of nearby splendid vineyards , wonderful harbour fronts and surprising restaurants where one can indulge on the delicious seafood

Please note:

Itineraries are subject to change.



The Small Cruise Ship Collection

www.small-cruise-ships.com

small-cruise-ships.com

info@small-cruise-ships.com

YOUR SHIP: DIANA

YOUR SHIP: Diana

VESSEL TYPE:

LENGTH:

PASSENGER CAPACITY:

BUILT/REFURBISHED:

Launched in 2023, SH Diana provides elegant and spacious 5-star accommodation for 192 guests in 96 spacious staterooms and suites, the vast majority with large balconies. Operated by an onboard team of 140 she provides a high level of personal service, exploring the Mediterranean and its famous sites of antiquity. Now sit back, relax and take a moment to get to know this amazing new ship, purpose-designed for our unique cultural expedition cruises. Named after the Ancient Roman goddess of light, the moon, hunting and the wilderness, SH Diana has been specially designed for worldwide cruising to explore the most inspiring and inaccessible places on earth. Building on the outstanding amenities of her sister ships, she adds a dedicated Multifunctional Room next to the Observation Lounge, a Private Dining Room for special occasions, and two tenders which bring guests a comfortable alternative to Zodiacs for expedition landings. A Polar Class 6 ice-strengthened hull combines with extra-large stabilisers to make your journey as comfortable as possible. SH Diana has been designed for immersive experiences, with extensive outside deck areas, multiple observation points and bright, open and relaxing public spaces with unobstructed views. The pleasure and safety of our

guests is paramount at all times, cared for by our attentive crew and seasoned expedition leaders. Cutting edge hygiene technology protects the health of all on board to the highest standards and includes air conditioning with UV sanitisation systems. SH Diana's 96 staterooms, including 11 suites, are each a superbly comfortable home from home and all feature panoramic sea views, a flame-effect fireplace, original works of art, plush couches, premium pocket sprung mattresses, en-suite bathrooms with glass-enclosed rain showers, and Egyptian cotton towels, bathrobes and sheets. A pillow menu offers customised head and neck comfort during rest, while a large flat screen TV, espresso machine with Illy premium coffee, tea making facilities with the finest Kusmi teas, and a minibar with refreshments enhance relaxation at any time. In-room dining is of course available at all hours. Wheelchair access Guests who use wheelchairs must bring their own, as we have only a small number of wheelchairs stored onboard for emergencies. To ensure ease of movement on the ship, wheelchairs and mobility aids must be no wider than 65cm. All mobility or medical equipment brought on board must be capable of being carried safely and must be declared before sailing. To ensure that all guests can safely evacuate during an emergency, guests requiring a wheelchair can only be accommodated in our ADA-accessible cabins. We offer an Oceanview and a Balcony stateroom on Diana. These staterooms are specifically designed to be completely ADA compliant and have a fully operable wheelchair-access wet unit. Diana has two lifts, serving every passenger deck apart from the Stargazing top deck, which is, therefore, more difficult to access, as are the Aft Marina and

The Small Cruise Ship Collection
www.small-cruise-ships.com

01432 507 280 (within UK)

info@small-cruise-ships.com | small-cruise-ships.com

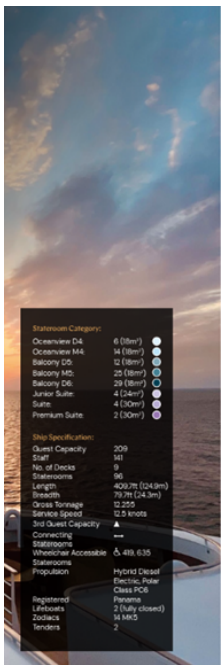


Swan's Nest forward observation platform. Also, we don't have special equipment to access the swimming pool, jacuzzi, or sauna. Otherwise, the ship is entirely at your disposal. Many of the expeditions ashore in remote places are by Zodiac. Boarding these boats and returning aboard can present challenges for wheelchair users, as can navigating uneven terrain. These challenges are by no means always insurmountable, though, and our highly experienced crew is trained to provide reliable advice and assistance. They will make every effort to ensure wheelchair-using guests enjoy a memorable experience at each destination. Our general guidance, however, is to recommend wheelchair users travel with a companion for their ease and enjoyment. If you prefer to remain aboard, our panoramic interiors and ample open decks ensure an immersive, intimate experience of your inspiring



surroundings.

INSIDE YOUR SHIP

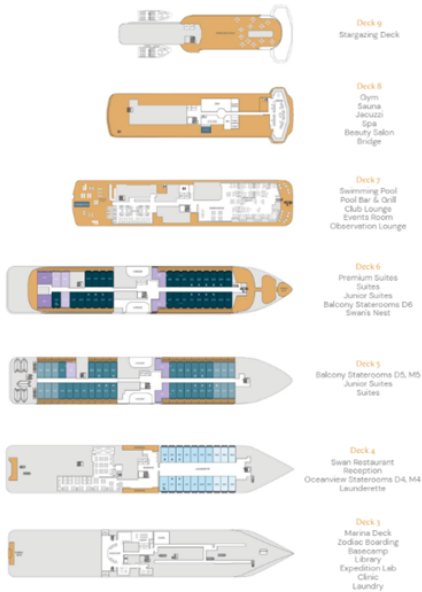


Stateroom Category:

- Oceanview D4: 6 (8m²)
- Oceanview M4: 14 (8m²)
- Balcony D5: 12 (8m²)
- Balcony M5: 25 (8m²)
- Balcony D6: 24 (8m²)
- Junior Suite: 4 (24m²)
- Suite: 4 (30m²)
- Premium Suite: 2 (30m²)

Ship Specifications:

- Guest Capacity: 209
- Crew: 101
- No. of Decks: 8
- Staterooms: 98
- Length: 400.7m (1243ft)
- Beam: 79.1m (243ft)
- Gross Tonnage: 12,205
- Service Speed: 12.5 knots
- 1st Guest Capacity: A
- Connecting: ---
- Staterooms: 5, 419, 635
- Wheelchair Accessible: ---
- Staterooms: Hybrid Diesel
- Propulsion: Electric, Polar Class PC6
- Registered: Panama
- Lifboats: 2 (fully closed)
- Deckchairs: 14 M&S
- Tenders: 2



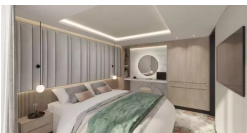
Balcony D5



Balcony D6



Junior Suite



Oceanview M4



Premium Suite





The Small Cruise
Ship Collection

www.small-cruise-ships.com

small-cruise-ships.com

info@small-cruise-ships.com

PRICING

28-Oct-2025 to 15-Nov-2025

Junior Suite	£27080 GBP pp
Balcony D6	£23480 GBP pp
Oceanview M4	£18980 GBP pp
Balcony D5	£21680 GBP pp
Premium Suite	£36180 GBP pp



The Small Cruise
Ship Collection

www.small-cruise-ships.com

01432 507 280 (within UK)

info@small-cruise-ships.com | small-cruise-ships.com