



The Small Cruise
Ship Collection

www.small-cruise-ships.com

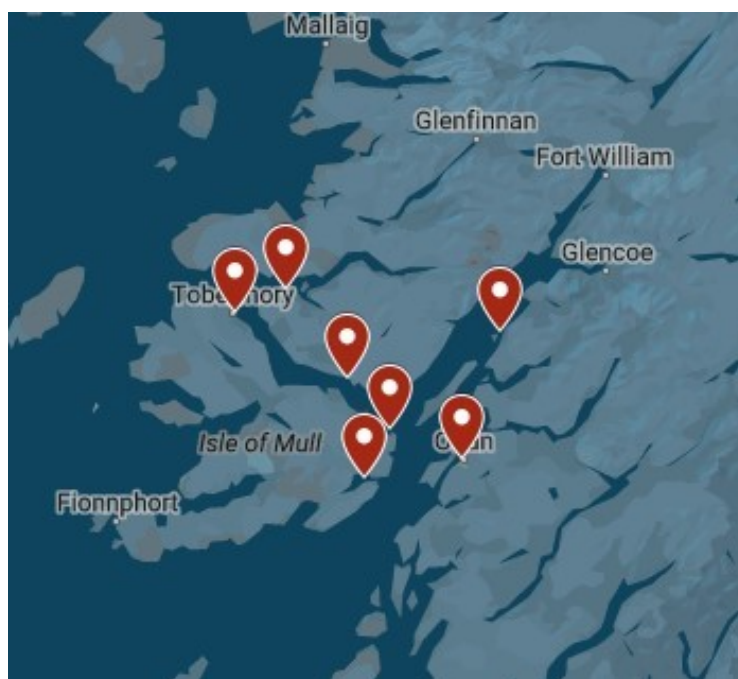


small-cruise-ships.com

info@small-cruise-ships.com

THE SOUNDS OF MULL AND LINNHE WILDLIFE SCOTLAND CRUISE

This five night Scottish cruise takes you along the majestic Sound of Mull, famous for its wildlife and bordered by the Isle of Mull and the Morvern Peninsula, and along historic Loch Linnhe. Our voyage will give you the full flavour of Scotland from the sea: its sheltered sea lochs, tranquil anchorages, picturesque harbours, ancient castles and even a whisky distillery. The mini cruise is a wonderful introduction to the breath-taking Hebrides and Islands. There are myriads of seabirds and glancing skywards you might glimpse soaring golden and white tailed eagles and, at sea, you could be followed by dolphins, watch playful harbour porpoises and common and grey seals. Along the shore line, if you are lucky, otters may play in the shallows. In the autumn the mountains and hills are truly magnificent in their red and gold colours and they become alive to the bellows of the rutting stags. We are pleased to offer to our passengers a complementary visit to Duart castle.



ITINERARY

Days 1 - 6 The Sounds of Mull and Linnhe

Oban: Your departure point will be Oban (Dunstaffnage Marina), the gateway to the Hebridean isles. After a short introduction to life on board our small ship we set sail to our first destination.

Loch Linnhe: The long Loch Linnhe goes all the way to Fort William. We travel past Lismore Island for the sheltered anchorage off Shuna Island. We can go ashore and visit the local nature reserve on the mainland and admire the famous Castle Stalker. There are lovely walks across the causeway bridge to Port Appin.

Loch Spelve: A narrow entrance leads us in to the tranquil waters of Loch Spelve (on the beautiful Isle of



The Small Cruise
Ship Collection

www.small-cruise-ships.com

01432 507 280 (within UK)

info@small-cruise-ships.com | small-cruise-ships.com



The Small Cruise Ship Collection

www.small-cruise-ships.com



small-cruise-ships.com

info@small-cruise-ships.com

Mull) with its surrounding ancient oak forest. If we are lucky we might spot an otter along the loch shore. We can also pick up some locally grown mussels before we leave to our next destination. Duart Castle: Our daytime anchorage in Duart Bay is below the spectacular 13th century Duart Castle, the ancestral home to the Maclean clan. You can go for walks along the shore and visit the castle and learn about its rich clan history. Tobermory: One of the most picturesque towns in the Hebridean Isles with its famous whisky distillery and colourful waterfront. We anchor in the Bay where a Spanish galleon was supposedly sunk with all its treasure. We can spend a day ashore and for the adventurous there are fast boat trips that can be arranged to visit Fingal's cave on the Isle of Staffa. There are also sea eagle watch tours, guided walks or you can just wander along the streets, visit the delightful local museum, perhaps watch a pipe band, admire the wooden fishing boats and take in the long history of this lovely village. Loch Drumbuie: Just south of Oronsay island, another Inner Hebridean island, lies secluded Loch Drumbuie. A squeeze between high sided cliffs and we are in a perfectly sheltered anchorage. A lovely location for going sea kayaking or for a swim. Loch Aline: In the picturesque Loch Aline there are woodland walks and, at the head of the loch, is ancient Ardtornish estate and woodland gardens.

Please Note:

Please note that your voyage is weather dependent. Weather doesn't just mean good or bad weather. There are many considerations such as tidal gates, wind direction and strength, the strength and direction of currents, overfalls, and fetch. Depending upon the weather and nature's conditions, wildlife viewing varies. If you wish to visit a specific place or have a specific experience, such as sea eagle tours or whisky tasting,

then please do let your skipper know and he will endeavour to meet your request. Excursions and visits ashore are at your own cost.



The Small Cruise Ship Collection

www.small-cruise-ships.com

01432 507 280 (within UK)

info@small-cruise-ships.com | small-cruise-ships.com



The Small Cruise Ship Collection

www.small-cruise-ships.com



small-cruise-ships.com

info@small-cruise-ships.com

YOUR SHIP: GEMINI EXPLORER

YOUR SHIP:

Gemini Explorer

VESSEL TYPE:

LENGTH:

PASSENGER CAPACITY:

BUILT/REFURBISHED:

Gemini Explorer, a mini cruise ship, is a historic, converted cruising lifeboat that once roamed the Western Approaches and was involved in the storm of the ill-fated 1979 Fastnet Race. Gemini Explorer was built in 1974 in Bideford Shipyard as the City of Bristol (70-003), one of three, Clyde class, cruising lifeboats (see Wikipedia) with an extended offshore range of 1700 miles. She is powered by two powerful Gardner diesel engines and she will achieve speeds of up to twelve knots. The Gemini Explorer entered service at the Clovelly Lifeboat Station on the North Devonshire coast and, after saving 44 lives, was finally retired in 1989. Since then, after extensive re-fits and modifications (including a new galley, high bulwarks, viewing top deck, en-suite accommodation and a well lit saloon), she has been converted to a mini cruise ship and today sails as the Gemini Explorer. However, there are parts of the insides of the vessel that have been kept in their original state to give an exciting insight in to role she once played as a cruising lifeboat. As a mini cruise ship she has voyaged as far away as Greenland and, for the last 10 years, sailed as a charter vessel on the east coast of Scotland. In 2020 after a further refit and upgrade she will be sailing the beautiful islands and sea lochs of Scotland's

west coast as part of St Hilda Sea Adventures little fleet. Accommodation The deck saloon is where everyone dines and socialises and where everyone enjoys a convivial atmosphere that is encouraged by shipboard life aboard this ex-cruising lifeboat. Cabins are warm and comfortable with eight berths for our guests. In the forward part of the vessel there is a double en-suite, a twin en-suite and single en-suite. In the aft part of the vessel there is a cabin which can sleep up to three guests (choice of one double bed and two single berths). This aft cabin shares the bathroom with the two crew. All en-suites and the bathroom have a washbasin, toilet and shower. All cabin linen and towels are supplied. There is an upper viewing deck complete with teak benches and perfect for spotting wildlife and relaxing. You also have some deck space to embark your own equipment such as kayaks and paddleboards. You will also be able to use the onboard two person



The Small Cruise Ship Collection

www.small-cruise-ships.com

01432 507 280 (within UK)

info@small-cruise-ships.com | small-cruise-ships.com



The Small Cruise Ship Collection

www.small-cruise-ships.com



small-cruise-ships.com

info@small-cruise-ships.com



sea kayak.



The Small Cruise
Ship Collection

www.small-cruise-ships.com

01432 507 280 (within UK)

info@small-cruise-ships.com | small-cruise-ships.com

The Small Cruise Ship Collection

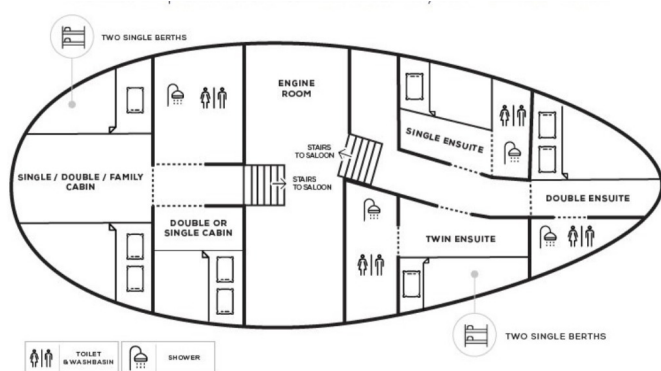
www.small-cruise-ships.com



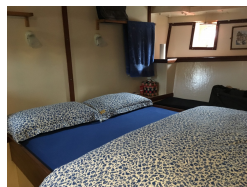
small-cruise-ships.com

info@small-cruise-ships.com

INSIDE YOUR SHIP



Double Cabin En-suite Single Cabin



Single Cabin En-suite Twin / Double Cabin En-suite



Twin Cabin Twin Cabin En-suite



The Small Cruise Ship Collection

www.small-cruise-ships.com



small-cruise-ships.com

info@small-cruise-ships.com

PRICING

28-Sep-2024 to 03-Oct-2024

Double Cabin En-suite	£1500 GBP pp
Twin Cabin En-suite	£1300 GBP pp
Twin Cabin	£950 GBP pp

03-Oct-2024 to 08-Oct-2024

Single Cabin	£1200 GBP pp
Twin Cabin	£1325 GBP pp
Single Cabin En-suite	£1750 GBP pp
Twin / Double Cabin En-suite	£1750 GBP pp

08-Jun-2025 to 13-Jun-2025

Double Cabin En-suite	£1550 GBP pp
Twin Cabin En-suite	£1325 GBP pp
Twin Cabin	£975 GBP pp

07-Sep-2025 to 12-Sep-2025

Twin Cabin	£975 GBP pp
Twin Cabin En-suite	£1325 GBP pp
Double Cabin En-suite	£1550 GBP pp

01-Oct-2025 to 06-Oct-2025

Twin / Double Cabin En-suite	£1800 GBP pp
Single Cabin	£1225 GBP pp
Single Cabin En-suite	£1800 GBP pp
Twin Cabin	£1350 GBP pp

02-Oct-2025 to 07-Oct-2025

Double Cabin En-suite	£1550 GBP pp
Twin Cabin En-suite	£1325 GBP pp
Twin Cabin	£975 GBP pp

03-Oct-2025 to 08-Oct-2025

Twin Cabin En-suite	£1800 GBP pp
Double Cabin En-suite	£2025 GBP pp
Double Cabin adjacent En-suite	£1900 GBP pp



The Small Cruise Ship Collection

www.small-cruise-ships.com

01432 507 280 (within UK)

info@small-cruise-ships.com | small-cruise-ships.com