



The Small Cruise  
Ship Collection

[www.small-cruise-ships.com](http://www.small-cruise-ships.com)



[small-cruise-ships.com](http://small-cruise-ships.com)

[info@small-cruise-ships.com](mailto:info@small-cruise-ships.com)

## **SOLOMON ISLANDS, PAPUA NEW GUINEA AND INDONESIA: ISLAND-HOPPING TO HIDDEN PACIFIC GEMS**

In the Western Pacific, dream destinations await that are as idyllic as they are enigmatic. Those seeking the exceptional and who are ready to exchange the familiar for authentic experiences will find a gem of a travel destination here.

The Small Cruise  
Ship Collection

[www.small-cruise-ships.com](http://www.small-cruise-ships.com)

**01432 507 280** (within UK)

[info@small-cruise-ships.com](mailto:info@small-cruise-ships.com) | [small-cruise-ships.com](http://small-cruise-ships.com)



# The Small Cruise Ship Collection

www.small-cruise-ships.com



small-cruise-ships.com

info@small-cruise-ships.com



settlements. Waitangi is famous as the scene of the signing of the Waitangi Treaty in 1840 between representatives of the British Crown and Maori chiefs. The treaty formed the basis for the founding of modern-day New Zealand.

Days 3 - 4 Relaxation at sea

Day 5 Ile des Pins/New Caledonia

You will feel like you are in a French kind of paradise on the other side of the world on Ile des Pins. White sandy beaches invite you to enjoy its peaceful idyll or snorkel in the crystal-clear lagoon. Which species of fish and coral will you see? The vegetation ashore is dominated by tall and slim araucaria trees. Captain James Cook was impressed by these back in 1774, when he visited the island in search of tree trunks for ship masts. He mistakenly called them pines and named the island after them. Thanks to your experts on board, you will be smarter than him - as well as enriched by the natural beauty of the idyllic scenery.

Days 6 - 7 Relaxation at sea

Days 8 - 11 Solomon Islands (Santa Ana Island, Roderick Bay, Onua Island, Pirumeri Island)

With lectures and travel reports, your team of experts on board will get you in the mood for an exotic wonderland: the Solomon Islands. The islands were named by the Spanish explorer Alvaro de Mendana de Neira; in 1568, he believed he had discovered the land of the biblical King Solomon's gold and named the islands after him. Today, the real treasure is the stunning natural environment.

On a Zodiac landing on the beach of Santa Ana Island, look

## ITINERARY

Day 1 Auckland/New Zealand, departure 19.00 hrs

Day 2 Bay of Islands/New Zealand

In the far north of New Zealand, the dramatic scenery creates an idyllic natural canvas. With more than 140 subtropical islands in its turquoise waters, the Bay of Islands is a fascinating blend of wild nature and historical depth. Find a wealth of Oceania's picture-book scenes here, with cormorants in the mangrove forests, thundering waterfalls and the famous Hole in the Rock off Cape Brett. Sites steeped in history tell the story of encounters between the Maori and European explorers: the historic coastal town of Russell was one of the first European



01432 507 280 (within UK)

info@small-cruise-ships.com | small-cruise-ships.com



## The Small Cruise Ship Collection

[www.small-cruise-ships.com](http://www.small-cruise-ships.com)



[small-cruise-ships.com](http://small-cruise-ships.com)

[info@small-cruise-ships.com](mailto:info@small-cruise-ships.com)

forward to an impressive welcome ritual by the village "warriors", brandishing their spears. The islanders' traditions are also reflected in their villages, which you will explore alongside your experts. Discover what life is like below sea level when snorkelling in the colourful coral reefs. The diverse wonders of creation are also on show in the lush jungle.

In Roderick Bay, set out by Zodiac to see the wreck of the World Discoverer, which ran aground on a coral reef in 2000 and lies stranded - where it is slowly being taken over by plants.

The Shortland Islands - around 100 small islands of volcanic origin - are now a tropical idyll, with dense rainforest, white beaches and crystal-clear water. Anyone who swims and snorkels in the shallow, azure-blue sea off Onua Island will immediately understand why this remote island world is one of the hidden treasures of the Pacific. But their turbulent history during the Second World War also makes the islands a fascinating travel destination.

Immerse yourself in the life of the islanders on tiny Pirumeri Island. The true treasure of King Solomon lies here in their hospitality, colourful dances and religious chants - nestled in lush greenery and surrounded by crystal-clear waters.

Days 12 - 16 Papua New Guinea (Rabaul, Kavieng, Garove Island, Kopar/Sepik River, Vanimo)

Papua New Guinea is one of the most heterogeneous countries in the world. Hundreds of Indigenous peoples live here, some with cultures going back thousands of years. Impenetrable rainforests, deep valleys and mountains rising up to 4,500 m (14,764 ft) kept the different tribes largely apart. And so today, over 800 languages and dialects are spoken in Papua New

Guinea.

The untamed forces of fire, to which Papua New Guinea owes much of its beauty, greet you spectacularly as you enter the harbour of Rabaul. The small town is surrounded by active volcanoes, some of which are still active, sending mystical columns of smoke rising into the blue sky. Turned into a ghost town by a volcanic eruption in 1994, people now live in the town again, with its many buildings from the colonial era.

Your discoveries continue when the BREMEN sets sail for Kavieng, which lies on the north cape of the island of New Ireland in the middle of the current area between the open Pacific and the Bismarck Sea. Surrounded by small islands and coral reefs, an underwater world rich with species has developed here that captivates divers. The coastal town is known for its relaxed atmosphere, turquoise-coloured water and excellent diving and surfing spots.

You will also love Garove Island. The remote volcanic island encloses an impressive caldera that has been flooded by the ocean - crater walls up to 300 m (984 ft) high rise imposingly. The island is covered in dense tropical vegetation and provides a habitat for numerous endemic plants and birds. Secluded beaches and small villages of the Tolai people reflect the traditional way of life of the inhabitants and make a visit here a unique natural and cultural experience.

The longest river on the island of New Guinea, the Sepik River is perfect for adventures with its practically untouched natural scenery. On an exciting Zodiac ride, explore the many lateral channels and penetrate deep into the lush green forests.



01432 507 280 (within UK)

[info@small-cruise-ships.com](mailto:info@small-cruise-ships.com) | [small-cruise-ships.com](http://small-cruise-ships.com)



## The Small Cruise Ship Collection

[www.small-cruise-ships.com](http://www.small-cruise-ships.com)



[small-cruise-ships.com](http://small-cruise-ships.com)

[info@small-cruise-ships.com](mailto:info@small-cruise-ships.com)

Accompanied by the noises of the jungle, you will land at the small village of Kopar. Here, you will encounter one of the many tribes that live along the river and are famous for their artistic wood carvings. Take part in the life of the locals for a while and feel the rhythm of the tropics during the colourful displays of the dance groups.

The settlement of Vanimo cannot be reached by land. Close to the border with Indonesia, white beaches and wide lagoons line the coast. Vanimo was a colonial trading post for Germany and a Japanese base during the Second World War. The region was strategically important during the Pacific War, particularly because of its proximity to Indonesia and Japanese movements in the region. Despite its rich history, this authentic place is still a blank page unfilled by tourism. The stay is part of a technical stop. Swimming is possible, subject to official authorisation and the local conditions.

#### Days 17 - 18 West Papua/Indonesia (Jayapura, Pulau Indi)

West Papua, the Indonesian part of the island of New Guinea, opens the door to untouched wilderness and cultural diversity. Dense rainforests, rugged mountains and secluded coastlines define the landscape, while small villages preserve centuries-old traditions. Hidden lagoons, exotic animals and colourful coral reefs make this expedition a breathtaking adventure combining natural wonders and fascinating culture.

Jayapura, the lively capital of Papua Province, is picturesquely situated on a sheltered bay, framed by rolling hills and lush tropical forest. Here, modern infrastructure blends with the deep-rooted traditions of the Papuan people, whose colourful costumes and rituals still shape everyday life today. The

surrounding area offers idyllic beaches, the mysterious Lake Sentani and remote villages where you can experience the life of the Indigenous communities. Jayapura is more than just the gateway to West Papua - it's a step into a fascinating world full of culture, nature and authentic encounters.

When you land with the Zodiacs on the small island of Pulau Indi, your explorer's heart will immediately start beating faster. An idyllic sandy white beach and crystal-clear water invite you to relax and unwind or explore the pristine underwater gardens while snorkelling. A dazzling world full of diverse, colourful fish and corals, whose shapes and colours constantly outdo each other. This kaleidoscope of creation, which remains largely undiscovered by tourist crowds, will inspire you.

#### Day 19 Relaxation at sea

#### Day 20 Pulau Arguni/West Papua/Indonesia

Experience the magic of Indonesia along the bizarre limestone islands of Pulau Arguni. A remote area of exploration, reserved primarily for small expedition ships such as those operated by Hapag-Lloyd Cruises. Glide close to the towering cliffs in a Zodiac and discover hidden caves, tropical jungle that reaches right down to the water's edge and secluded beaches that are only accessible from the sea. The rocks feature mysterious prehistoric rock paintings that could be several thousand years old. Your team of experts on board will explain who created them and what stories they tell about the early inhabitants.

#### Days 21 - 22 Relaxation at sea

#### Day 23 Komodo/Indonesia



The Small Cruise Ship Collection

[www.small-cruise-ships.com](http://www.small-cruise-ships.com)

01432 507 280 (within UK)

[info@small-cruise-ships.com](mailto:info@small-cruise-ships.com) | [small-cruise-ships.com](http://small-cruise-ships.com)



## The Small Cruise Ship Collection

[www.small-cruise-ships.com](http://www.small-cruise-ships.com)



[small-cruise-ships.com](http://small-cruise-ships.com)

[info@small-cruise-ships.com](mailto:info@small-cruise-ships.com)

In the heart of the Indonesian archipelago lies the Komodo National Park - an impressive UNESCO World Heritage Site stretching between the islands of Sumbawa and Flores. Here there are 29 volcanic islands, the largest of which are Komodo, Rinca and Padar. The park is famous for being home to the legendary Komodo dragons, the largest lizards in the world, which roam majestically through the savannahs and tropical forests. The underwater world here is also fascinating: the crystal-clear waters are home to a rare, still extensively undiscovered marine biodiversity, with colourful coral reefs and exotic sea creatures.

Day 24 Benoa/Bali/Indonesia, arrival 07.00 hrs

Please note:

Itineraries are subject to change.



The Small Cruise  
Ship Collection

[www.small-cruise-ships.com](http://www.small-cruise-ships.com)

**01432 507 280** (within UK)

[info@small-cruise-ships.com](mailto:info@small-cruise-ships.com) | [small-cruise-ships.com](http://small-cruise-ships.com)



## The Small Cruise Ship Collection

[www.small-cruise-ships.com](http://www.small-cruise-ships.com)



[small-cruise-ships.com](http://small-cruise-ships.com)

[info@small-cruise-ships.com](mailto:info@small-cruise-ships.com)

## YOUR SHIP: HANSEATIC INSPIRATION

**YOUR SHIP:** Hanseatic Inspiration

**VESSEL TYPE:**

**LENGTH:**

**PASSENGER CAPACITY:**

**BUILT/REFURBISHED:**

The HANSEATIC inspiration, a small, state-of-the-art expedition ship with a maximum of 230 guests, offers a perfect blend of adventure and comfort for explorers seeking to uncover the world's wonders. As an international vessel conducting cruises in both English and German, it brings over 30 years of expertise from a market leader in German-speaking countries to every journey. Each expedition is a masterpiece, passionately crafted to reveal far-flung worlds--be it icy realms, tropical paradises, wildlife havens, or cultural gems--making every voyage a unique discovery aboard this exceptional ship. Features of all cabins and suites An ocean view with even more: exclusively outside cabins and suites, almost all with balconies or French balconies Spaciously designed - enjoy a relaxing stay in rooms from 21 m<sup>2</sup>/226 ft<sup>2</sup> up to 71 m<sup>2</sup>/764 ft<sup>2</sup> in size Exceptionally equipped - for example, with binoculars, Nordic Walking poles, air conditioning, coffee machine and mini bar (free of charge) and 24-hour cabin service Separable beds Rain shower and heated wall in bathroom (e.g. for towels and wet parkas) Extensive infotainment with live broadcast and recordings of expert presentations, forwardview camera, navigation chart, films and much more Restaurants Aboard the HANSEATIC inspiration, a

new kind of freedom blends adventure and pleasure with a culinary journey across three exceptional restaurants. The spacious HANSEATIC Restaurant offers flexible mealtimes and a free choice of seating, serving a daily-changing menu of global flavors inspired by local specialties, paired with fine wines and supported by attentive 24-hour cabin service. At the Lido Restaurant, guests can savor breakfast under the open sky or enjoy a perfectly grilled steak from the outdoor barbecue, complete with panoramic views and an open show kitchen. The specialty restaurant Nikkei fuses fine Japanese creations with modern Peruvian cuisine, delivering a unique dining experience that elevates exploration to new heights--all while bars in the Observation Lounge and HanseAtrium offer favorite drinks against stunning backdrops, from Nordic fjords to icy Antarctic vistas. Fitness and Wellness On the HANSEATIC inspiration, an extraordinary time out awaits after thrilling Zodiac rides, challenging hikes, or Arctic adventures. Unwind in the Ocean Spa, where a Finnish sauna with stunning ocean views, a gentle steam sauna, an ice fountain, and a relaxation room rejuvenate your senses, complemented by professional massages, cosmetic treatments, and eco-friendly products made from natural, vegan ingredients. Stay active in the 100 m<sup>2</sup> fitness room or separate course room--both with ocean vistas--guided by a fitness coach offering personalized advice and a variety of courses, either indoors or on deck. The pool area, with its flexible canopy, invites relaxation year-round, featuring water loungers, a whirlpool, and a bar, ensuring a perfect blend of indulgence and revitalization against the backdrop of the open sea. Knowledge Shore excursions and Zodiac rides come alive



The Small Cruise Ship Collection

[www.small-cruise-ships.com](http://www.small-cruise-ships.com)

01432 507 280 (within UK)

[info@small-cruise-ships.com](mailto:info@small-cruise-ships.com) | [small-cruise-ships.com](http://small-cruise-ships.com)



# The Small Cruise Ship Collection

[www.small-cruise-ships.com](http://www.small-cruise-ships.com)



[small-cruise-ships.com](http://small-cruise-ships.com)

[info@small-cruise-ships.com](mailto:info@small-cruise-ships.com)

with deeper context through fascinating presentations in the HanseAtrium, a high-tech lounge where experts share daily precasts and recaps, doubling as an atmospheric evening bar for films and discussions. The Ocean Academy enhances the journey with a Study Wall and interactive poster of scientific insights, microscopes for exploring hidden wonders alongside experts, and Study Seats--with swivel touchscreens--for personal dives into science. Supported by travel diaries and destination videos, this immersive experience broadens horizons with cutting-edge tools and



expertise.



The Small Cruise Ship Collection

[www.small-cruise-ships.com](http://www.small-cruise-ships.com)

**01432 507 280** (within UK)

[info@small-cruise-ships.com](mailto:info@small-cruise-ships.com) | [small-cruise-ships.com](http://small-cruise-ships.com)



# The Small Cruise Ship Collection

[www.small-cruise-ships.com](http://www.small-cruise-ships.com)

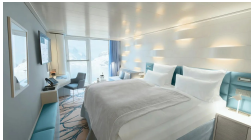


[small-cruise-ships.com](http://small-cruise-ships.com)

[info@small-cruise-ships.com](mailto:info@small-cruise-ships.com)

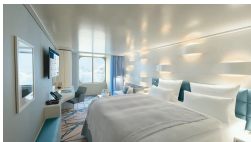
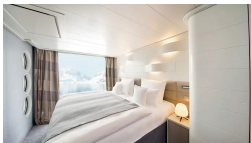
## INSIDE YOUR SHIP

Balcony Cabin. From



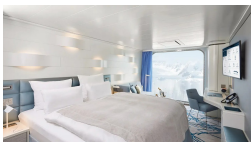
French Balcony Cabin. From

Junior Suite. From



Outside Cabin. From

Panoramic Cabin. From





# The Small Cruise Ship Collection

[www.small-cruise-ships.com](http://www.small-cruise-ships.com)



[small-cruise-ships.com](http://small-cruise-ships.com)

[info@small-cruise-ships.com](mailto:info@small-cruise-ships.com)

## PRICING

14-Mar-2028 to 06-Apr-2028

Outside Cabin. From	£14505 GBP pp
Panoramic Cabin. From	£15305 GBP pp
French Balcony Cabin. From	£16939 GBP pp
Balcony Cabin. From	£18375 GBP pp
Junior Suite. From	£25529 GBP pp



01432 507 280 (within UK)

[info@small-cruise-ships.com](mailto:info@small-cruise-ships.com) | [small-cruise-ships.com](http://small-cruise-ships.com)