

## The Small Cruise Ship Collection

www.small-cruise-ships.com

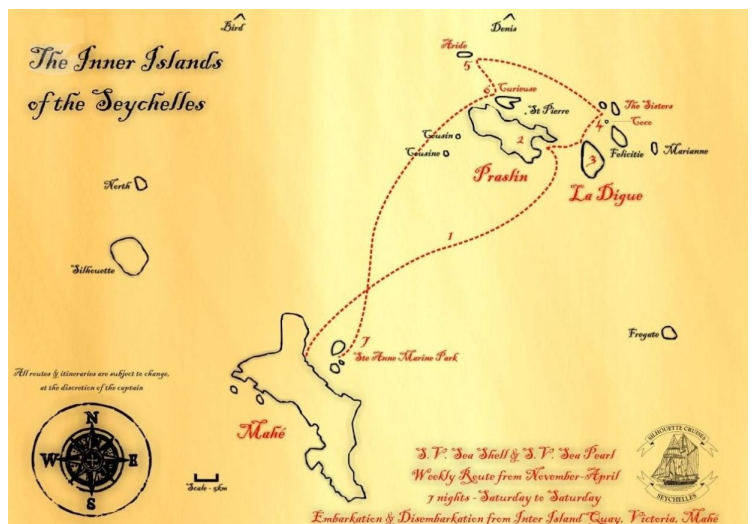
small-cruise-ships.com

info@small-cruise-ships.com

### THE SEYCHELLES FROM NOVEMBER TO APRIL

Isolated in the Indian Ocean and the only mid-ocean islands of granite formation to be found on earth, the Seychelles archipelago is often mentioned in the same breath as the lost 'Garden of Eden.' The highest peaks of a submerged mountain range that broke apart from the supercontinent of Gondwana millions of years ago, the Seychelles' inner islands are the most ancient islands on earth - no other mid-ocean isles of granite formation can be found anywhere else. This curious geological feature was one of several curiosities about the islands that led the famed British General, Charles Gordon, to declare Seychelles the site of the biblical Garden of Eden. Situated some 1,500 kilometers east of mainland Africa, and northeast of the island of Madagascar, this tiny island group boasts a population of just 90,000 inhabitants, with a warm, tropical climate all year-round and some of the most stunningly beautiful beaches in the world. Mahé, the largest island, is home to the majority of the population and represents the archipelago's commercial and transportation hub, with the country's only international airport linking the islands to the rest of the globe. The island is characterised by its towering granite peaks, lush mist forests and dozens of striking coves and beaches. The second largest island, Praslin, is home to the legendary Vallée de Mai, the UNESCO World Heritage Site where the Coco de Mer grows in abundance. This double coconut, which curiously resembles the shape of a woman's pelvis, was another facet of General Gordon's theory about Seychelles as the Garden of Eden - he believed it to be the real forbidden fruit. La Digue, the third-most populous island, moves at an even slower pace: bicycles remain the most common mode of transportation, for

both its residents and visiting tourists. The huge granite boulders that adorn the coastline at Anse Source D'Argent have led some to believe that it could very well be the most photographed beach in the world. While Mahé, Praslin and La Digue may be the principal islands, dozens of smaller 'satellite' isles nearby offer further opportunity to explore and admire. Every island has a character and charm all of its own, with colorful individual histories and unique natural features, some with steep granite cliffs and others comprising pristine coral atolls. Together, they make up a surprisingly diverse destination of great natural beauty, rare flora and fauna that have been cocooned in isolation for millions of years, and a friendly multi-cultural people eager to welcome you to



their shores.

The Small Cruise Ship Collection  
www.small-cruise-ships.com

01432 507 280 (within UK)

info@small-cruise-ships.com | small-cruise-ships.com



## The Small Cruise Ship Collection

[www.small-cruise-ships.com](http://www.small-cruise-ships.com)

[small-cruise-ships.com](http://small-cruise-ships.com)

[info@small-cruise-ships.com](mailto:info@small-cruise-ships.com)

### ITINERARY

#### Day 1 - Mahe - Embarkation

Embarkation at the Inter-Island Quay at 1030hrs, followed by the Captain's welcome briefing. Depart Port Victoria at 1200hrs, sailing from Mahé to a late afternoon anchorage at Round Island, just off the isle of Praslin. In the evening, introduce yourself to Creole cuisine with a welcome barbecue dinner onboard.

#### Day 2 - Praslin

Sail to Praslin, Seychelles' second-largest inhabited island, for disembarkation to the famous World Heritage Site, the Vallee de Mai Nature Reserve. This ancient forest is home to the curiously shaped double coconut, the coco de mer, as well as the Black Parrot, unique to Praslin. Explore the valley's eerie pathways beneath its canopy of massive palms, before returning onboard for afternoon opportunities to dive, snorkel or enjoy other water sports.

#### Day 3 - La Digue

A morning sail brings the vessel to La Digue, a sleepy island community where ox-carts and bicycles still remain the most common mode of transportation throughout the island. La Digue is home to the endemic Seychelles Paradise Flycatcher, and is perhaps most famous for its massive granite boulder formations at Anse Source d'Argent, which is thought to be the most photographed beach on earth. Explore the entire island by bicycle, perhaps stopping by Union Estate, a sprawling network of traditional island activities, including a copra mill, vanilla plantation, and shipyard.

#### Day 4 - Grande Soeur and Petite Soeur

In the morning the vessel sails toward Grande Soeur and Petite Soeur (the Sisters) for excellent snorkelling and diving, and for a relaxing visit of these unique and completely uninhabited tropical islands. In the afternoon, visit Coco Island, one of Seychelles' tiny granite jewels, a fantastic spot for snorkelling within a kaleidoscope of tropical fish.

#### Day 5 - Booby Island and Aride Island

Sail to Booby Island for a morning of diving and water sports. After lunch, sail to Aride Island, a globally important nature reserve with more native bird species than any other island, including five endemics and the world's largest population of 3 species (Lesser Noddy, Audubon's Shearwater and Seychelles Warbler). The nature trail leads to a spectacular cliff-top view with the largest frigatebird roost outside of Aldabra. Aride is the only natural location in the world for Wright's Gardenia and 400 species of fish have been recorded around the island.

#### Day 6 - Curieuse

In the morning disembark at Curieuse for a visit of this virtually uninhabited island. Experience the island's vast mangrove forests and its giant tortoise farm, along with the historic ruins of this former leper colony. After a barbecue lunch on the island, enjoy an array of water sports or simply relax and enjoy the island's beautiful beach and turquoise waters. Sail to St. Pierre, the small granite outcrop just off Praslin for more water-sports.

#### Day 7 - Ile Seche

After breakfast, enjoy a leisurely sail back towards Mahé, with a last stop at St. Anne for more snorkelling or diving, followed by a farewell barbecue. Overnight at Ile Seche.

#### Day 8 - Mahe - Disembarkation





The Small Cruise  
Ship Collection

[www.small-cruise-ships.com](http://www.small-cruise-ships.com)

[small-cruise-ships.com](http://small-cruise-ships.com)

[info@small-cruise-ships.com](mailto:info@small-cruise-ships.com)

Early morning sail towards Victoria. Disembarkation at the Inter-Island Quay at 08.30hrs.

**Please Note:**

Your safety and comfort are our highest priority. In the event of adverse conditions, all itineraries are subject to change at the captain's discretion.



The Small Cruise  
Ship Collection

[www.small-cruise-ships.com](http://www.small-cruise-ships.com)

**01432 507 280** (within UK)

[info@small-cruise-ships.com](mailto:info@small-cruise-ships.com) | [small-cruise-ships.com](http://small-cruise-ships.com)



The Small Cruise  
Ship Collection

[www.small-cruise-ships.com](http://www.small-cruise-ships.com)

[small-cruise-ships.com](http://small-cruise-ships.com)

[info@small-cruise-ships.com](mailto:info@small-cruise-ships.com)

## YOUR SHIP: SEA STAR & SEA BIRD

<b>YOUR SHIP:</b>	<b>Sea Star &amp; Sea Bird</b>
<b>VESSEL TYPE:</b>	<b>Motorised Schooner</b>
<b>LENGTH:</b>	<b>40m Sea Star / 42m Sea Bird</b>
<b>PASSENGER CAPACITY:</b>	<b>22</b>
<b>BUILT/REFURBISHED:</b>	<b>2002 / 2000</b>



The SY Sea Star is a 40-metre custom-built yacht with three masts and five Bermuda sails, with classic wood finishings across its 9 spacious guest cabins and common areas. The SY Sea Bird was redesigned in 2007 to begin cruising in Seychelles, is a two-masted 42-metre yacht with four Bermuda sails, sleek contours and modern interiors across its 9 en-suite guest cabins and common areas.



The Small Cruise  
Ship Collection

[www.small-cruise-ships.com](http://www.small-cruise-ships.com)

**01432 507 280** (within UK)

[info@small-cruise-ships.com](mailto:info@small-cruise-ships.com) | [small-cruise-ships.com](http://small-cruise-ships.com)





The Small Cruise  
Ship Collection

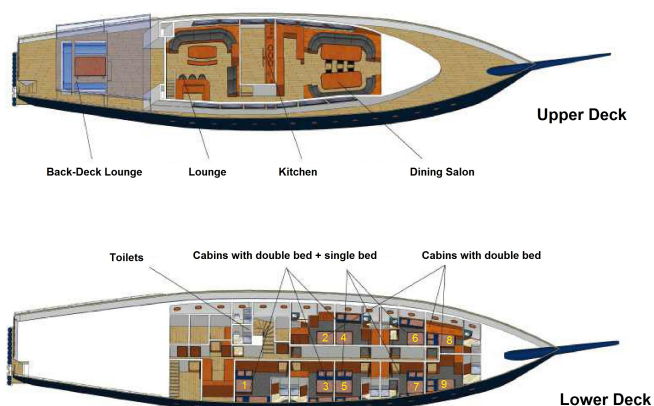
[www.small-cruise-ships.com](http://www.small-cruise-ships.com)

[small-cruise-ships.com](http://small-cruise-ships.com)

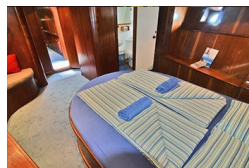
[info@small-cruise-ships.com](mailto:info@small-cruise-ships.com)

## INSIDE YOUR SHIP

SY Sea Bird



Double Cabin



CABIN ABOARD SEA BIRD

Triple Cabin



CABIN ABOARD SEA STAR



The Small Cruise  
Ship Collection

[www.small-cruise-ships.com](http://www.small-cruise-ships.com)

01432 507 280 (within UK)

[info@small-cruise-ships.com](mailto:info@small-cruise-ships.com) | [small-cruise-ships.com](http://small-cruise-ships.com)



The Small Cruise  
Ship Collection

[www.small-cruise-ships.com](http://www.small-cruise-ships.com)

[small-cruise-ships.com](http://small-cruise-ships.com)

[info@small-cruise-ships.com](mailto:info@small-cruise-ships.com)

## PRICING

### 07-Nov-2024 to 14-Nov-2024

Triple Cabin	£2235 GBP pp
Double Cabin	£2425 GBP pp
Single Occupancy Double Bed	£3635 GBP pp

### 09-Nov-2024 to 16-Nov-2024

Triple Cabin	£2235 GBP pp
Double Cabin	£2425 GBP pp
Single Occupancy Double Bed	£3635 GBP pp

### 16-Nov-2024 to 23-Nov-2024

Triple Cabin	£2235 GBP pp
Double Cabin	£2425 GBP pp
Single Occupancy Double Bed	£3635 GBP pp

### 23-Nov-2024 to 30-Nov-2024

Triple Cabin	£2235 GBP pp
Double Cabin	£2425 GBP pp
Single Occupancy Double Bed	£3635 GBP pp

### 30-Nov-2024 to 07-Dec-2024

Triple Cabin	£2235 GBP pp
Double Cabin	£2425 GBP pp
Single Occupancy Double Bed	£3635 GBP pp

### 07-Dec-2024 to 14-Dec-2024

Triple Cabin	£2235 GBP pp
Double Cabin	£2425 GBP pp
Single Occupancy Double Bed	£3635 GBP pp

### 14-Dec-2024 to 21-Dec-2024

Triple Cabin	£2235 GBP pp
Double Cabin	£2425 GBP pp
Single Occupancy Double Bed	£3635 GBP pp

### 21-Dec-2024 to 28-Dec-2024

Triple Cabin	£2235 GBP pp
Double Cabin	£2425 GBP pp
Single Occupancy Double Bed	£3635 GBP pp

### 28-Dec-2024 to 04-Jan-2025

Triple Cabin	£1565 GBP pp
Double Cabin	£1695 GBP pp
Single Occupancy Double Bed	£2545 GBP pp

### 04-Jan-2025 to 11-Jan-2025

Triple Cabin	£1565 GBP pp
Double Cabin	£1695 GBP pp
Single Occupancy Double Bed	£2545 GBP pp

### 11-Jan-2025 to 18-Jan-2025

Triple Cabin	£1565 GBP pp
Double Cabin	£1695 GBP pp
Single Occupancy Double Bed	£2545 GBP pp

### 18-Jan-2025 to 25-Jan-2025

Triple Cabin	£1565 GBP pp
Double Cabin	£1695 GBP pp
Single Occupancy Double Bed	£2545 GBP pp



The Small Cruise  
Ship Collection

[www.small-cruise-ships.com](http://www.small-cruise-ships.com)

01432 507 280 (within UK)

[info@small-cruise-ships.com](mailto:info@small-cruise-ships.com) | [small-cruise-ships.com](http://small-cruise-ships.com)





The Small Cruise  
Ship Collection

www.small-cruise-ships.com

small-cruise-ships.com

info@small-cruise-ships.com

## PRICING

### 25-Jan-2025 to 01-Feb-2025

Triple Cabin	£2235 GBP pp
Double Cabin	£2425 GBP pp
Single Occupancy Double Bed	£3635 GBP pp

### 01-Feb-2025 to 08-Feb-2025

Triple Cabin	£2235 GBP pp
Double Cabin	£2425 GBP pp
Single Occupancy Double Bed	£3635 GBP pp

### 08-Feb-2025 to 15-Feb-2025

Triple Cabin	£2235 GBP pp
Double Cabin	£2425 GBP pp
Single Occupancy Double Bed	£3635 GBP pp

### 15-Feb-2025 to 22-Feb-2025

Triple Cabin	£2235 GBP pp
Double Cabin	£2425 GBP pp
Single Occupancy Double Bed	£3635 GBP pp

### 22-Feb-2025 to 01-Mar-2025

Triple Cabin	£2235 GBP pp
Double Cabin	£2425 GBP pp
Single Occupancy Double Bed	£3635 GBP pp

### 01-Mar-2025 to 08-Mar-2025

Triple Cabin	£2235 GBP pp
Double Cabin	£2425 GBP pp
Single Occupancy Double Bed	£3635 GBP pp

### 08-Mar-2025 to 15-Mar-2025

Triple Cabin	£2235 GBP pp
Double Cabin	£2425 GBP pp
Single Occupancy Double Bed	£3635 GBP pp

### 15-Mar-2025 to 22-Mar-2025

Triple Cabin	£2235 GBP pp
Double Cabin	£2425 GBP pp
Single Occupancy Double Bed	£3635 GBP pp

### 22-Mar-2025 to 29-Mar-2025

Triple Cabin	£2235 GBP pp
Double Cabin	£2425 GBP pp
Single Occupancy Double Bed	£3635 GBP pp

### 29-Mar-2025 to 05-Apr-2025

Triple Cabin	£2235 GBP pp
Double Cabin	£2425 GBP pp
Single Occupancy Double Bed	£3635 GBP pp

### 05-Apr-2025 to 12-Apr-2025

Triple Cabin	£2235 GBP pp
Double Cabin	£2425 GBP pp
Single Occupancy Double Bed	£3635 GBP pp

### 12-Apr-2025 to 19-Apr-2025

Triple Cabin	£2235 GBP pp
Double Cabin	£2425 GBP pp
Single Occupancy Double Bed	£3635 GBP pp



The Small Cruise  
Ship Collection

www.small-cruise-ships.com

01432 507 280 (within UK)

info@small-cruise-ships.com | small-cruise-ships.com



The Small Cruise  
Ship Collection

[www.small-cruise-ships.com](http://www.small-cruise-ships.com)

[small-cruise-ships.com](http://small-cruise-ships.com)

[info@small-cruise-ships.com](mailto:info@small-cruise-ships.com)

# PRICING

19-Apr-2025 to 26-Apr-2025

Triple Cabin	£2235 GBP pp
Double Cabin	£2425 GBP pp
Single Occupancy Double Bed	£3635 GBP pp

ADDITIONAL CHARGES: Conservation Fee 200 EUR pp



The Small Cruise  
Ship Collection

[www.small-cruise-ships.com](http://www.small-cruise-ships.com)

01432 507 280 (within UK)

[info@small-cruise-ships.com](mailto:info@small-cruise-ships.com) | [small-cruise-ships.com](http://small-cruise-ships.com)