



The Small Cruise
Ship Collection

www.small-cruise-ships.com

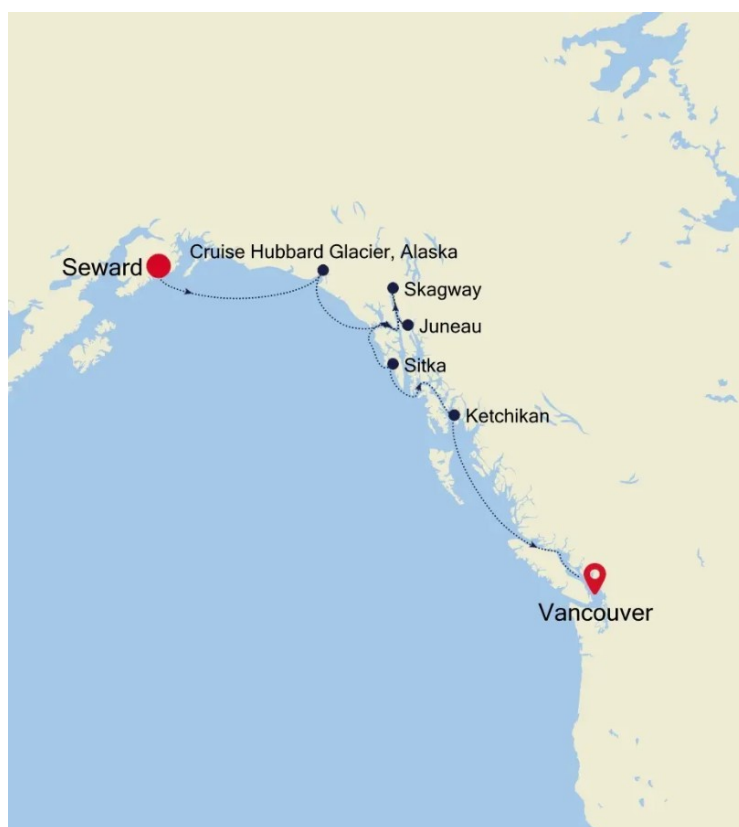


small-cruise-ships.com

info@small-cruise-ships.com

SEWARD TO VANCOUVER - LUXURY ALASKA EXPEDITION

Explore classic frontier towns like Sitka and Skagway, get to know Juneau, the only U.S. capital unreachable by road, and go bear spotting in Ketchikan. Experience the eye-popping natural beauty of the largest state in the U.S., while sailing past jagged peaks, massive glaciers, tranquil fjords and unique and endemic wildlife. Once back on board, enjoy all the superlative comfort that Silver Nova offers, as you enjoy this fantastic region.



ITINERARY

Day 1 Pre Cruise

Day 2 Seward (Anchorage, Alaska)



The Small Cruise
Ship Collection

www.small-cruise-ships.com

01432 507 280 (within UK)

info@small-cruise-ships.com | small-cruise-ships.com



The Small Cruise Ship Collection

www.small-cruise-ships.com

small-cruise-ships.com

info@small-cruise-ships.com

Monumental scenery surrounds you in this remote corner of the world, where glaciers calve and whales cruise through inky waters, before an immense mountain backdrop. Almost totally submerged by the colossal landscapes around it, Seward - and the wonders of Kenai Fjords National Park - offer some of astonishing Alaska's most thrilling scenery. Located in a deep gash in the Kenai Peninsula, Seward is a place to immerse yourself in nature's majesty. Fjords carve into the landscape, while the Harding Icefield - which caps Kenai Fjords National Park - reaches out its icy fingers, with glaciers spilling down between mountain peaks. Head to Holgate Glacier, to come face to face with a breathtaking stack of intense blue and white ice. Get up close in a kayak or boat ride, to slalom through the discarded confetti of ice chunks, and perhaps even witness the powerful spectacle of an ice ledge creaking and groaning, before plunging to the waters below. The city of Anchorage is easily within reach from here, offering an incongruous contrast to the wild wonders of Alaska. A place where deep-sea fishermen bump shoulders with businesspeople on the 9-5, it's a fascinating, remote city. Home to almost half of the Alaskan population, Anchorage and its humble skyline is dwarfed by the snowy peaks of the wilderness beyond. Don't miss the opportunity to immerse yourself in the unique culture, traditions and heritage of the First Nation people of these lands too.

[Day 3 Cruise Hubbard Glacier, Alaska](#)

Hubbard Glacier, off the coast of Yakutat, Alaska, is the largest

glacier in North America, with a calving front that is more than six miles wide. One of the main sources for Hubbard Glacier originates 76 mi inland. It has been a very active glacier, experiencing two major surges in the past 30 years. This glacier was named after Gardiner Greene Hubbard, a U.S. lawyer, financier, and philanthropist. He was the first president of the National Geographic Society.

[Day 4 Juneau \(Alaska\)](#)

Extraordinary adventures amid nature's wildest staging await at Juneau. The majestic Mendenhall Glacier sprawls down from Juneau Icefield, which provides an icy cap to the area's rip-roaring scenery. State capitals simply don't get more dramatic than this isolated, remote city lost amid the Alaskan wilds. Even the roads eventually peter out, absorbed by forests and viewpoints, firmly underlining the isolated location, hidden behind an impenetrable wall of rigid mountains. Rise up to Mount Roberts Tramway's viewpoint, to see the city swallowed by this most colossal backdrop. This is glacier country, and no fewer than 38 ice flows branch off from the main Juneau Icefield, slowly carving out valleys in their wakes. Taku Glacier cuts deep into the mountain, forming a colossal sculpture that is one of the world's thickest - almost a mile deep. Mendenhall Glacier cascades down, just 12 miles away from downtown, terminating in its own lake and visitor centre. With 1,500 square miles of ice field to explore, one of the best ways to take in the magnitude and majesty of this epic ice sculpture is to hold on tight on as the propeller whirs, and you soar into the skies on an

The Small Cruise Ship Collection
www.small-cruise-ships.com

01432 507 280 (within UK)

info@small-cruise-ships.com | small-cruise-ships.com



The Small Cruise Ship Collection

www.small-cruise-ships.com

small-cruise-ships.com

info@small-cruise-ships.com

exhilarating sightseeing flight. Cruising up above the icy world that fills in these serrated mountain peaks is a once in a lifetime experience. The animals that inhabit the Southeast Alaskan wilds are just as inspiring as the landscapes - families of bears patrol the riverbanks, bald eagles survey the surroundings watchfully, and Pacific humpbacks migrate from Hawaii's waters to feast on the krill rich, icy waters. Fish for huge catches, power across the ice in a snow-sledge, or kayak just below glaciers. However you choose to immerse yourself in it, Juneau's incredible outdoor adventures never disappoint.

[Day 5 Skagway \(Alaska\)](#)

Feel the same rush of excitement as the gold rush chasers did, when they first arrived in Skagway, intent on finding their fortune. While the gold may now be gone, a treasure trove of natural glory waits to be discovered here. The adrenaline of America's legendary gold rush still pulses along Skagway's streets, especially in Klondike Gold Rush National Historical Park and the historic downtown area - which sprang up during the heady heights of the 1890's goldrush. The jagged mountain ridges - with peaks of white snow above a treeline of soaring pine forests - provide a reward for the ages. Recapture the evocative sense of adventure, as you ride one of the world's most spectacular railroads. Your engine will puff steam below the precipitous, colossal scenery, while the vintage carriages curve around the White Pass & Yukon Route, alongside tumbling waterfalls and spanning deeply-etched gorges. Wander historic trails like the Chilkoot Trail Hike, to walk in the well-trodden

footsteps of the gold seekers. Set on the northern tip of the Inside Passage, Skagway luxuriates in a remarkably beautiful and dramatic landscape. Explore mighty rivers teeming with thick salmon leaping over rapids and see brown bears edging from the shelter of the trees. Endless forests spread as far as the eye can see, while bald eagles perch on treetops, surveying the surroundings from above. Whales roam offshore, and glaciers creak and calve nearby, in this magical natural kingdom.

[Day 6 Sitka \(Alaska\)](#)

A distant land of bears, wild landscapes and icy adventures, sail between glorious islands and witness the diverse wildlife of the Inside Passage. Eagles watch over the scenery overhead, while whales and sea lions add glorious weight to the animal life that thrives and thrashes in these icy seas. With a quintet of Pacific salmon species filling the rich rivers and waterways with life, settle back to enjoy the show, as Sitka's immense setpieces play out before you. You might notice the onion-shaped dome atop St. Michael's Church - a relic of the area's Russian history. Sitka formed a part of the Russian Empire until a deal was struck in 1867, and the territory was sold to the United States, with the handover ceremony taking place here in Sitka. The native Tlingit culture is an important presence, and elaborate totem poles rocket up in Sitka National Historical Park. They mark the battleground of 1804, when the indigenous people clashed fiercely with the Russians. The snow-capped peak of the dormant volcano, Mount Edgecumbe, draws understandable

The Small Cruise Ship Collection
www.small-cruise-ships.com

01432 507 280 (within UK)

info@small-cruise-ships.com | small-cruise-ships.com



The Small Cruise Ship Collection

www.small-cruise-ships.com

small-cruise-ships.com

info@small-cruise-ships.com

comparisons with Mount Fuji's symmetrical cone. Climb to thrilling heights, as you arrive on Kruzof Island, and enjoy richly spellbinding views of the scattered Pacific islands, while hiking. Whether you want to spend your time flying above snow-dusted mountain ridges, fishing for colossal King salmon, or savouring Northwest frontier cuisine in waterfront restaurants, there's no shortage of ways to experience Sitka's natural wonders.

Day 7 Ketchikan, Alaska

wholesome, however. See the colourful historic street that is built on crooked stilts over Ketchikan Creek, which has a crude history as the main red-light district in the city. The brothels closed in the 1950s, but you can explore this legendarily seedy past at Dolly's House - a brothel turned museum. See the Married Man trail, a historical route used to enter Creek Street away from prying eyes.

Day 8 Cruise Inside Passage

The Salmon Capital of the World is a thrilling introduction to wild and wonderful Alaska, sitting at the southern gateway to the Inside Passage's famed route of larger than life scenery. Cruise through the waters, or soar just above in a sightseeing plane, to take in the full majesty of the magnificent Misty Fjords National Monument. Home to grizzly and black bears - as well as cruising whales and swimming seals - the wildlife spotting opportunities in this majestic corner of the world are nothing short of spectacular. Towered over by steep banks and valley walls, Ketchikan's ocean inlet is peppered with granite stacks, looming from the waters. Surrounded by glorious landscapes, head to the Alaska Rainforest Sanctuary, which is alive with bald eagles, black bears and remarkable, thick, yellow banana slugs - the squeamish are advised to keep well clear. Visit Ketchikan's Heritage Centre, where a collection of intricately carved totem poles rise up, preserving the heritage of the indigenous Tlingit and Haida people of these lands. Ketchikan has the world's largest collection, and some of the oldest and most precious totems in existence. This frontier city hasn't always been so

Navigate through the intricate outlays of some of Alaska's most staggering winter scenery, threading a needle between craggy, snow-dusted islands, and slipping glacial giants. To cruise this 500-mile stretch of Alaskan beauty is to sail through a living work of natural art - with perfectly sculpted mountains soaring from the shoreline, and clutches of islands scattered across the dark waters with delicate attention to detail. A common sailing route due to its calm sheltered waters, gorgeous natural set pieces constantly play out here - whether it's killer whales accompanying you through the breathtaking icy passages, harbour seals catching a break on floating hunks of ice, or wisps of cloud clinging to distant mountain peaks. Witness Mother Nature at her most dramatic and elaborate along this Alaskan coastline, where glaciers groan and creak melodramatically, before finally releasing colossal shelves of ice, allowing them to free fall into the waters below, and explode with angry booms and thunderous splashes. While fundamental displays of nature's power always awe and amaze, it's the tranquil beauty of this passage - amid still waters, splitting only to reveal the

The Small Cruise Ship Collection
www.small-cruise-ships.com

01432 507 280 (within UK)

info@small-cruise-ships.com | small-cruise-ships.com



The Small Cruise Ship Collection

www.small-cruise-ships.com

small-cruise-ships.com

info@small-cruise-ships.com

smooth backs of breaching humpback whales - that is relentlessly moving. A journey of glaciers, remote hidden villages, and carved fjords - the Inside Passage is a breathtaking voyage through the intricate mesh of Alaska's fractured, raw and spectacular coastal landscapes.

Day 9 Vancouver

Boasting mountains, sea, culture, art and so much more, many cities claim to have it all, but few can back it up like Vancouver. Famously livable, just visiting this highrise city - surrounded by staggering natural beauty - is a thrill. Offering all of the creature comforts of an ultra-modern, worldly metropolis - even downtown has a hint of mountain-freshness to its air - and part of Vancouver's appeal is how easily you can swap the skyscrapers for whale-filled oceans and mountain-punctured skies. Head up to the Vancouver Lookout Tower for the ultimate 360-degree views of the city glistening, amid the beautiful embrace of the beckoning wilderness beyond. But what to see first? Art lovers might choose the Vancouver Art Gallery or the Contemporary Art Gallery. Nature lovers might rush for the ferry to visit Vancouver Island - where they can encounter grizzly bears, whales and orcas. Culture vultures, on the other hand, will probably head for the sights and sounds of Canada's biggest Chinatown. From steaming dim sum for lunch to Chinese apothecaries offering herbs to soothe any illness, it's all here thanks to the migrant workers of the 19th century. The one-of-a-kind treasure of Stanley Park brings wild wonder and natural beauty to this cosmopolitan city's doorstep, and the

pine-tree clad park offers isolated trails and amazing views. Wander the Seawall that encircles it - a 20-mile coastal path, full of joggers, whizzing skaters and wandering couples. Grab a bike and cycle between Coal Harbour and Kitsilano Beach. You can top up your tan on the shore, as you soak in the glorious views of the mountains and cityscape from the sands.

Day 10 Post Cruise

Please note:

The excursions are provided as a sample of what may be offered on this voyage and are subject to change. We are constantly updating our shore excursion programme with immersive and authentic experiences, so please do not hesitate to review your tour programme choice closer to your sail date. We invite guests to visit my.silversea.com for the most updated information.



The Small Cruise Ship Collection

www.small-cruise-ships.com

small-cruise-ships.com

info@small-cruise-ships.com

YOUR SHIP: SILVER NOVA

YOUR SHIP:

Silver Nova

VESSEL TYPE:

LENGTH:

PASSENGER CAPACITY:

BUILT/REFURBISHED:

Silver Nova is more than a new ship, it is a Nova way of luxury travel. This modern and beautiful vessel will debut in summer 2023, and is a home away from home for up to 728 guests. Silver Nova's innovative asymmetrical design introduces the world like never before, offering an immersive destination experience to our guests. With a gross tonnage of 54,700 tons she will offer a space-to-guest ratio of 75 GRT-per-passenger becoming one of the most spacious cruise ships ever built. What's more, Silver Nova will be one of the most environmentally friendly, and thanks to her groundbreaking technological solutions, she will propel the ship into a new era of sustainable cruising. It's the Nova way to travel. S.A.L.T. Chef's Table Prepare for an intimate and interactive dining experience like no other at the S.A.L.T. Chef's Table. Indulge in a choreographed menu of small plates highlighting regional flavours and star ingredients, all accompanied by unique wines and cocktails. Per guest reservation fee of U\$180 (incl. complimentary wine & cocktail pairing). Reservations will be taken exclusively on board Silver Nova. S.A.L.T. Kitchen Are you hungry for something new? Eat your way through the places on your cruise in the S.A.L.T. Kitchen. Enjoy destination-inspired

menus, including the Terrain menu, which offers recipes and flavours specific to the port visited, and the Voyage menu, which draws inspiration from the best flavours of the voyage. Pull up a chair and savour every taste of your cruise in a vibrant and welcoming atmosphere. S.A.L.T. Kitchen is the opportunity for all guests aboard Silver Nova to experience the very lifeblood of their destination. Atlantide Atlantide offers guests our quintessential dining experience. Combining contemporary elegance and hallmark Silversea service, this classic restaurant offers our signature fine dining. Atlantide is one of our best-loved eateries, and on Silver Nova we have given it an updated design. Large picture windows, sophisticated lighting design, plus a warm colour spectrum give Atlantide a blend of high-end and whispered luxury. The menu prides itself on superb ingredients and sublime flavour combinations, from caviar to lobster to gorgeous, melt in the mouth deserts. La Terrazza Our hallmark Italian restaurant is as varied as the food-loving country itself. La Terrazza aboard Silver Nova offers an unparalleled destination dining experience, from its expansive floor-to-ceiling windows to its large, outdoor terrace. Enjoy all the tastes of the different regions, including the best homemade pasta, fresh antipasto, bowls of steaming risotto, hearty ragu and delicious tiramisu. Be sure to try one of the bold wines from the cellar, to wash it all down. La Dame Indulge in new epitome of French fine dining aboard Silver Nova, where culinary heritage meets modern innovation. Immerse yourself in an exquisite gastronomic experience showcasing deep, balanced flavours, from curated tasting menus to a la carte selections paired with thoughtfully curated wine selection. Per guest reservation fee of

The Small Cruise Ship Collection
www.small-cruise-ships.com

01432 507 280 (within UK)

info@small-cruise-ships.com | small-cruise-ships.com



The Small Cruise Ship Collection

www.small-cruise-ships.com

small-cruise-ships.com

info@small-cruise-ships.com

US\$160 (incl. complimentary wine pairing). Kaiseki Experience the harmony of flavours and aesthetics with our enhanced Kaiseki dining experience. Delight in the fusion of Washoku's culinary heritage and health benefits, where each meticulously crafted dish is a work of art. Explore the depth and diversity of Japanese spirits with our exclusive selection of sake and Japanese whiskeys or savour a refreshing alternative from our delightful tea selection or cocktails. Per guest reservation fee of US\$80 (incl. complimentary sake, Japanese whiskeys or TWG tea and tea cocktails selection). Silver Note Where do you go if you want great food and a brilliant atmosphere in a relaxed and sophisticated setting? Silver Note of course! Harkening back to the old school days of dinner and dancing, this venue embodies a feeling of fun and sense of glamour that is unequalled in the industry. Jazz bands and soul singers play live as you sample delicate tapas style dishes with a gourmet twist. We guarantee a superlative night of entertainment in the gorgeously designed dinner venue. The Grill Silversea's much-loved casual dining restaurants serves a delectable range of burgers and salads by day, and turns into our famous Hot Rocks table BBQ concept by night. Found in our brand new eating venue The Marquee, The Grill is quite simply, the best place to eat between sea and sky. If you like flavoursome meals cooked to perfection, a casual laid back atmosphere and OMG views, then The Grill is the answer to your prayers. Spaccanapoli Nothing says Italy quite as well as a hot, fresh pizza. Spaccanapoli is a slice of Naples, where you'll taste deliciously thin, freshly made pizzas, topped with creamy mozzarella and minimalist toppings. The light and airy pizzeria forms part of our new al-fresco eatery The Marquee, and is the perfect choice for diners who want to be dazzled by our talented pizzaiolos spinning the dough in the open-air kitchen. Whether you want a light lunch or to share a slice with friends over an

aperitivo, it's always the right time for Spaccanapoli. The Pool Deck Enjoy a reimagined space where you can relax, refresh and rejuvenate on decks 10 and 11. Ample sunbeds for everyone, more space than ever before and the largest pool in the fleet - which offers exceptional 270° unhampered views - are just the beginning. The upper level sun deck is perfectly placed for those who want a quieter space to relax, and still enjoy those incredible, expansive views that are the hallmark of Silver Nova. But it is The Cliff Whirlpool, an infinity edge, glass fronted whirlpool, that really makes The Pool Deck something special. The Dusk Bar With an emphasis on the destination, panoramic views connects you with the world beyond on The Dusk Bar. This superb open-air sky bar provides plenty of space for guests to enjoy a pre or post dinner drink, while drinking in the jaw dropping 270-degree, panoramic views from the stern. The Dusk Bar's blessed combination of idyllic atmosphere and lovely drinks will guarantee to tick your boxes time after time. Whether you're enjoying a Spritz in South America, a cocktail in the Caribbean or a night cap in the Mediterranean, we think The Dusk Bar's unobstructed views give you a new perspective on sunsets at sea. The Marquee The expansive, attractive Marquee houses two of our greatest dining successes. Thanks to Silver Nova's groundbreaking asymmetrical design, we have been able to create an exciting new al fresco dining venue. The Marquee incorporates both The Grill and Spaccanapoli—two of Silversea's existing signature venues, which offer guests our trademark 'hot rocks' culinary concept as well as what are surely the best pizzas at sea. The Marquee will welcome guests in a relaxed atmosphere, serving casual fare by day and dinner under the stars by night. Arts Cafe The Arts Cafe offers a cultural setting for eating, drinking and socialising, as well as a chance to lose yourself while reading up on all your favourite artists and art.

The Small Cruise Ship Collection
www.small-cruise-ships.com

01432 507 280 (within UK)

info@small-cruise-ships.com | small-cruise-ships.com



The Small Cruise Ship Collection

www.small-cruise-ships.com

small-cruise-ships.com

info@small-cruise-ships.com

Enjoy healthy snacks and smoothies plus hot and cold drinks, juices, pastries and sandwiches in a light and airy space. Pop in for a late breakfast or afternoon snack, along with real Italian espresso plus a great range of tea. S.A.L.T. Bar Nothing says authentic experience better than Silver Nova's S.A.L.T. Bar. Get a taste for the authentic and settle down to enjoy locally-inspired cocktails and drinks. How can you go wrong with a Rum Punch in Barbados, a Pastis over ice in Marseille or a Pisco Sour in Lima? Nothing unites new faces and old friends in quite the same way. Be inspired to find your perfect locally-inspired beverage at the S.A.L.T. Bar and let in the colour and flavours of your journey rush in. S.A.L.T. Lab Welcome to the S.A.L.T. Lab, an interactive space where guests can deep-dive into local culinary heritage and techniques. Join our talented chefs and learn how your region's food is central to its culture. Engage in your destination through workshops, lectures and cooking demonstrations for an authentic souvenir not available in any shop. The S.A.L.T. Lab is not just about food and flavour; it is a unique place where holistic destination immersion gives an entirely new dimension to travelling. This is where the magic happens! The Shelter The Shelter is our newest pre and post dinner cocktail venue. Settle in amid an intimate and elegant setting, resplendent with sophisticated lighting, inviting sofas and stunning wraparound bar. Strategically located on deck three, the atmospheric hideaway opens onto the Atrium, creating an openness and connection to the other neighbouring venues. We promise you'll fall in love with one of the best bars on board while our talented team of mixologists mix and shake our range of signature and bespoke cocktails. With it is the perfect destination, warm smiles and legendary Silversea service, get set for unforgettable nights in The Shelter. Dolce Vita Our main bar has been newly reimagined for Silver Nova! Dolce

Vita has of course kept her legendary charm, inspired cocktails, stylish decor and comfortable seating, but a central bar now means the warm ambience is better than ever! Oozing Italian glamour, Dolce Vita is a relaxed, refined bar with a nightly piano player playing all your favourite tunes. Perfect for pre-dinner aperitivi, or even a post-dinner cocktail, Dolce Vita is truly the beating heart of social life on board. Panorama Lounge From early morning to late at night, the Panorama lounge offers everything you could wish for. A peaceful retreat that is the perfect place to break away to, a social place to meet and greet old friends, or an evening venue to partake in a cocktail as you sit back and watch the world go by. Sink into the plush seats and come evening, enjoy listening to the gentle sounds of a pianist, or the invigorating beats of our in-house DJ. Connoisseur's Corner Our smoking lounge aboard Silver Nova is our latest venue where cigar-lovers can buy and sample some of the world's finest Havanas, Cohibas, Partagas, Montecristos, Ramon Allones and Bolivars. Combining all the elements of cigar culture both indoors and on its stylish terrace, the Connoisseur's Corner is where aficionados can meet and mingle to share their iconic passion. Observation Lounge Set on the highest level at the very top of the ship, this is a quiet space for reading and reflection while being dazzled by the undulating seascapes that are constituent to life on board. Borrow a book from the in-house library, read the papers or just embrace the tranquillity of being at sea. The Venetian Lounge The grandeur and magic of music and theatre. The experience of being transported by performance. That satisfying feeling of seeing an evening show ... Welcome to Venetian Lounge, a place where the arts of theatre and music meet with full-scale productions and feature films. Paying tribute to a golden age of glamour, Venetian Lounge offers belle-epoque style cabaret seating, with

The Small Cruise Ship Collection
www.small-cruise-ships.com

01432 507 280 (within UK)

info@small-cruise-ships.com | small-cruise-ships.com

The Small Cruise Ship Collection

www.small-cruise-ships.com

small-cruise-ships.com

info@small-cruise-ships.com

intimate tables and chairs subtly placed between the rows of comfortable tiered banquettes. As the stage lights are dimmed, soak up the atmosphere, relax and enjoy a night of dazzling sights and sounds. Atrium Located on deck 4, the Atrium is the beating heart of Silver Nova. Inspired by Roman architecture, The Atrium magnificent windows floods our central meeting areas with abundant natural light. The area is home to both the Arts Cafe and The Shelter, as well as main service areas such as the Reception, Shore Concierge and Future Cruise Sales. The Atrium's enormous glass wall stretches over two decks, guaranteeing a deep connection with your destination whether at sea or docked in port. Boutique Exceptional shopping experiences do not end in the cosmopolitan cities we visit. Silversea's striking new shipboard boutiques, reimagined and redesigned are stunning modern design spaces befitting the finest creations from legendary designers. Carefully selected partners onboard Silversea's duty-free boutiques offers our guests a carefully curated selection of cutting edge fashions, jewellery, accessories, fine perfumes, cosmetics and Silversea Logo collection all at duty-free prices. Otium Spa Finding relaxation is one the of the principle aims of taking a cruise, so why not join us in the Otium Spa for guaranteed indulgence? Turn off your phone, slip on your robe and get ready for a bit of me time. Whether you need to unwind with a massage, perk up your skin with a facial or work up a sweat in sauna and steam room, Otium Spa offers the very latest in beauty therapy. Make every day a special occasion in Otium Spa. Casino Let the fun begin! Channel your inner James Bond and enjoy a flutter at a variety of table games including American Roulette, Blackjack and Poker as Silver Nova glides silently through the waves. An assortment of multi-game, multi-denominational reel and video slot machines are also available. Prepare yourself for a luxurious

and exhilarating experience with every turn of a card and spin of the wheel. Game on! Fitness Centre With state of the art Technogym® equipment, free weights and speciality classes, the Fitness Centre brings together elite design with programs that are specifically created for your body type and needs. With personal trainers available for individual sessions, training here is more a five-star experience for all levels of fitness and experience. And with the best view that you'll ever get whilst working out, there are definitely no



more excuses ...

The Small Cruise Ship Collection
www.small-cruise-ships.com

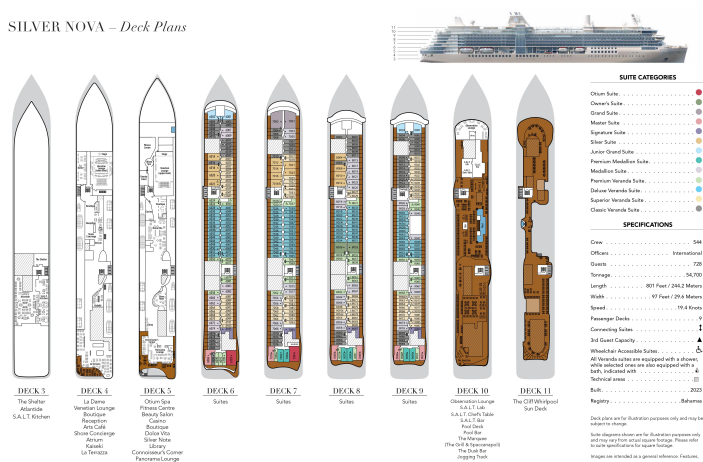
01432 507 280 (within UK)

info@small-cruise-ships.com | small-cruise-ships.com

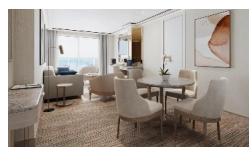
www.small-cruise-ships.com

info@small-cruise-ships.com

SILVER NOVA – Deck Plans



A modern hotel room with a large bed, a desk, and a view of the ocean. The room features a large bed with white linens and a gold-colored throw blanket. A desk with a chair is visible on the right, and a large window offers a view of the ocean. The room is decorated with a gold-colored headboard and a gold-colored lamp.



Silver Suite

Junior Grand Suite

Superior Veranda Suite

01432 507 280 (within UK)

info@small-cruise-ships.com | **small-cruise-ships.com**



The Small Cruise Ship Collection

www.small-cruise-ships.com



small-cruise-ships.com

info@small-cruise-ships.com

PRICING

17-Jul-2025 to 24-Jul-2025

Grand Suite	£14025 GBP pp
Owner's Suite	£15453 GBP pp
Signature Suite	£13311 GBP pp
Deluxe Veranda Suite	£6783 GBP pp
Classic Veranda Suite	£6375 GBP pp
Silver Suite	£11016 GBP pp
Premium Veranda Suite	£7038 GBP pp
Premium Medallion Suite	£10047 GBP pp
Junior Grand Suite	£10455 GBP pp
Superior Veranda Suite	£6579 GBP pp
Medallion Suite	£9333 GBP pp
Master Suite	£13770 GBP pp



The Small Cruise Ship Collection

www.small-cruise-ships.com

01432 507 280 (within UK)

info@small-cruise-ships.com | small-cruise-ships.com