

The Small Cruise Ship Collection

www.small-cruise-ships.com

small-cruise-ships.com

info@small-cruise-ships.com

SECRETS OF THE CORAL TRIANGLE: WEST PAPUA AND RAJA AMPAT CRUISE

Embark on a once-in-a-lifetime expedition cruise with Swan Hellenic through one of the most remote and biodiverse regions of the Indonesian archipelago -- the untouched wonders of West Papua and Raja Ampat. This extraordinary voyage reveals the raw natural beauty, vibrant marine ecosystems, and deeply rooted island cultures of a region few travelers ever reach. Sailing through secluded lagoons, coral atolls, and jungle-covered coastlines, you'll explore the heart of Indonesia's hidden paradise by small ship, where nature reigns supreme and discovery awaits at every turn. Your curated itinerary takes you far beyond the usual routes, from the crystal-clear waters of Cenderawasih Bay -- home to graceful whale sharks -- to the surreal limestone karsts of Wayag and Misool. Snorkel among vibrant coral reefs, relax on golden sand beaches only accessible by sea, and immerse yourself in the rhythm of local island life. April and May offer ideal conditions to navigate this untouched region, with calm seas and warm, humid days providing the perfect backdrop for exploration and connection with nature. Designed for curious and conscious travelers, this Raja Ampat cruise offers an unparalleled blend of adventure, cultural immersion, and pristine beauty. Whether you're swimming with giant whale sharks, trekking through lush rainforests, or engaging with remote island communities, Swan Hellenic ensures every moment is unforgettable. Discover West Papua's most breathtaking landscapes and marine sanctuaries in signature Swan Hellenic style -- refined, intimate, and deeply enriching.



ITINERARY

Days 0-2 Pre Cruise & Jayapura, Papua

Jayapura, Papua's provincial capital, serves as a base to explore the rugged Baliem Valley. Winding trails lead through verdant highlands to secluded waterfalls and saltwater springs. Traditional life endures in tribal villages hidden in the rainforest,

The Small Cruise Ship Collection
www.small-cruise-ships.com

01432 507 280 (within UK)

info@small-cruise-ships.com | small-cruise-ships.com



The Small Cruise Ship Collection

www.small-cruise-ships.com

small-cruise-ships.com

info@small-cruise-ships.com

featuring religious ceremonies or mock tribal wars. In Jayapura, museums recount the intense WWII battles, where Allied and Japanese forces clashed for control of the Pacific theatre.

Day 3 Pulau Padaidori, Papua

Pulau Padaidori is one of a cluster of tiny, mostly uninhabited islands and atolls off the northern Papuan coast. This remote stop combines secluded Pacific Rim beaches with a rich, protected marine ecosystem in its calm sapphire waters, where schools of shimmering tropical fish weave amid colourful coral gardens. Mangrove forests shelter snakes and crabs in their twisted root systems and swaying coconut palms decorate white-sand beaches.

Day 4 Kwatisore

Kwatisore, along the mainland shore of Cenderawasih Bay, is the bay's most renowned spot for close whale shark encounters. Here, the gentle giants gather beneath local fishing platforms (bagans), drawn by the catch. This unique interaction site offers rare, up-close experiences with resident whale sharks in calm, clear waters, making it a world-class destination for marine wildlife enthusiasts.

Day 5 Pulau Roon, Cenderawasih Bay, Papua

Pulau Roon in Indonesia's Papua province is an island paradise within The Gulf of Cenderawasih, a UNESCO World Heritage Site known for rich biodiversity. The island's hilly terrain offers pristine beaches and vibrant coral reefs with diverse marine life like dugong, reef sharks and schools of reef fish. Pulau Roon also boasts a rich cultural heritage, showcasing intricate

craftsmanship and traditional music.

Day 5 Auri Islands, Cenderawasih Bay, Papua

The Auri islands, a gateway to Cenderawasih Bay and its marine park, host diverse coral reefs teeming with fish species - butterfly fish, damselfish and clownfish- and resident whale sharks. Named after birds of paradise, Cenderawasih is a haven for these brightly plumed birds, alongside cassowaries, hornbills and crested pigeons. Dense rainforest and tiny fishing villages define the remote charm of these islands in Cenderawasih Bay.

Day 6 Manokwari, Papua

Overlooking tranquil Doreri Bay, where palm trees line sheltered coves and ghostly shipwrecks rest on the seabed, Manokwari is West Papua's coastal capital. In town, artists craft carvings and shell handicrafts, while the market and harbour provide immersion in local commerce and culture. Hiking Mount Arfak, the region's highest point, offers stunning mountain vistas and sightings of birds of paradise, cuscuses, and rare tree kangaroos.

Day 7 Ayu Atoll, Raja Ampat, Papua

Pulau Ayu, the main island in the Ayu Atoll, is a remote jewel of Raja Ampat. Fringed by ivory beaches and lush rainforest, and surrounded by vibrant coral reefs, it's a sanctuary for nesting leatherback turtles. Beneath its clear waters, tropical marine life flourishes, while the villages of Ayu and Imbik Kuan welcome visitors with warm Papuan hospitality. Once a WWII outpost, its isolation made it a key strategic base for Japanese forces.

The Small Cruise
Ship Collection

www.small-cruise-ships.com

01432 507 280 (within UK)

info@small-cruise-ships.com | small-cruise-ships.com



The Small Cruise Ship Collection

www.small-cruise-ships.com

small-cruise-ships.com

info@small-cruise-ships.com

Day 8 Waigeo Island, Aljui Bay, Raja Ampat

Aljui Bay on Waigeo Island in Indonesia's Raja Ampat archipelago is an extensive mangrove-lined inlet filled with pocket coves. Home to a pearl farm, the bay also offers sights like saltwater crocodiles, hornbills, cockatoos, and diverse marine life. Inland, the island features orchid-draped cloud forests and waterfalls, rare birds like the Wilson's bird of paradise, and opportunities to experience Papuan culture.

Day 9 Wayag Island, Raja Ampat

One of Raja Ampat's most remote islands, Wayag offers spectacular limestone karst formations surrounded by sapphire sea. Steps lead up to the panoramic Wayag Viewpoint overlooking the bullet-shaped stacks erupting from the ocean. Wayag's unusual landscape exists both above and below the surface with deserted white-sand beaches and underwater gardens packed with soft corals, darting tropical fish and black-tipped reef sharks.

Day 10 Pulau Misool, Balbulal Lagoon, Raja Ampat

With roughly 1,000 coral and over 1,200 reef fish species, the crystalline waters around jungle-woven Raja Ampat, Indonesia's easternmost islands, comprise the most biodiverse marine habitat unparalleled on the planet. Meaning 'four kings,' Raja Ampat refers to Waigeo, Salawati, Batanta and Misool, yet spreads across 1,000 atolls and islets. Originally joined to Australia, Raja Ampat is home to tree-dwelling marsupials and 500 bird species.

Day 10 Pulau Misool, Yapap, Raja Ampat

Pulau Misool, a remote island in Raja Ampat, showcases wild beauty with white-sand beaches and lush hills. A highlight is Yapap, a secluded lagoon surrounded by towering limestone karsts. Known for its glassy turquoise waters and white-sand seabed, it's ideal for snorkeling, swimming, and photography. Its serene atmosphere makes it a peaceful escape from more crowded spots.

Day 11 Sorong, Papua

The bustling port city of Sorong in West Papua is known as the gateway to the crystalline waters of Raja Ampat, the world's most biodiverse marine habitat, home to over 1,500 species of fish and 75 percent of the world's known coral species. In town, the Buddhist pagoda of Sapta Ratna stands tall on a hilltop overlooking the harbour. Local fishing boats come in with their catch at the bustling Pasar Jembatan Puri fish market.

Please Note:

Itineraries are subject to change.

The Small Cruise
Ship Collection
www.small-cruise-ships.com

01432 507 280 (within UK)

info@small-cruise-ships.com | small-cruise-ships.com



The Small Cruise Ship Collection

www.small-cruise-ships.com

small-cruise-ships.com

info@small-cruise-ships.com

YOUR SHIP: MINERVA

YOUR SHIP:

Minerva

VESSEL TYPE:

LENGTH:

PASSENGER CAPACITY:

BUILT/REFURBISHED:

The 5 star elegant Scandi-design boutique ship offers you an intimate setting from which you will be fully immersed in all the sights and scenery of your voyage. Introducing SH Minerva Minerva has been designed to journey to off the beaten path destinations and remote polar regions in style and comfort. The ship incorporates a PC5 ice-strengthened hull combined with extra-large stabilisers to make your journey as smooth as possible. Sophisticated Elegance We know how important outdoor space is, so our spacious, relaxing public spaces provide wide open, unobstructed views throughout the ship. The destination will always be in view. Your Wellbeing The safety & happiness of the guests is paramount to the 120-strong crew on board as well as the passionate expedition team who'll be serving up thrilling shore excursions and lasting memories. Cabin Types The 76 cabins including 6 suites have all the amenities you will need to feel comfortable including dressing gowns, hairdryers, personal safes and minibars. The stylish cabins all have desks, a dressing area and comfy seating. En suite bathrooms all feature glass-enclosed rain showers. Wheelchair access Guests who use wheelchairs must bring their own, as we have only a small number of wheelchairs stored

onboard for emergencies. To ensure ease of movement on the ship, wheelchairs and mobility aids must be no wider than 65cm. All mobility or medical equipment brought on board must be capable of being carried safely and must be declared before sailing. To ensure that all guests can safely evacuate during an emergency, guests requiring a wheelchair can only be accommodated in our ADA-accessible cabins. There is an Oceanview stateroom on Vega which is specifically designed to be completely ADA compliant and have a fully operable wheelchair-access wet unit. Vega has two lifts, serving every passenger deck apart from the Stargazing top deck, which is, therefore, more difficult to access, as are the Aft Marina and Swan's Nest forward observation platform. Also, we don't have special equipment to access the swimming pool, jacuzzi, or sauna. Otherwise, the ship is entirely at your disposal. Many of the expeditions ashore in remote places are by Zodiac. Boarding these boats and returning aboard can present challenges for wheelchair users, as can navigating uneven terrain. These challenges are by no means always insurmountable, though, and our highly experienced crew is trained to provide reliable advice and assistance. They will make every effort to ensure wheelchair-using guests enjoy a memorable experience at each destination. Our general guidance, however, is to recommend wheelchair users travel with a companion for their ease and enjoyment. If you prefer to remain aboard, our panoramic interiors and ample open decks ensure an immersive, intimate experience of your inspiring

The Small Cruise Ship Collection
www.small-cruise-ships.com

01432 507 280 (within UK)

info@small-cruise-ships.com | small-cruise-ships.com





The Small Cruise
Ship Collection

www.small-cruise-ships.com

small-cruise-ships.cominfo@small-cruise-ships.com



surroundings.

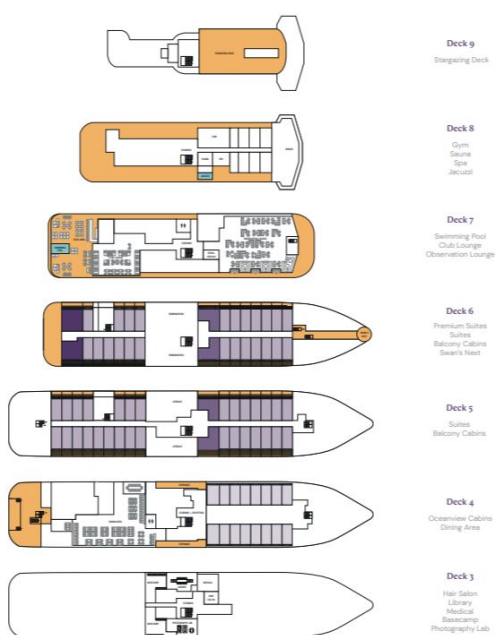
The Small Cruise Ship Collection

www.small-cruise-ships.com

small-cruise-ships.com

info@small-cruise-ships.com

INSIDE YOUR SHIP



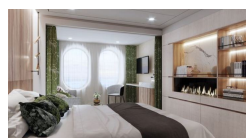
Balcony D5



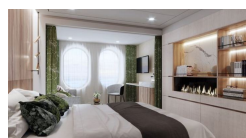
Balcony M5



Oceanview D4



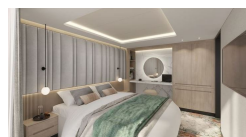
Oceanview M4



Premium Suite



Suite



The Small Cruise Ship Collection
www.small-cruise-ships.com

01432 507 280 (within UK)

info@small-cruise-ships.com | small-cruise-ships.com



The Small Cruise Ship Collection

www.small-cruise-ships.com

small-cruise-ships.com

info@small-cruise-ships.com

PRICING

17-Apr-2026 to 28-Apr-2026

Oceanview D4	£6612 GBP pp
Balcony M5	£8275 GBP pp
Balcony D5	£6950 GBP pp
Premium Suite	£13238 GBP pp
Suite	£11575 GBP pp
Oceanview M4	£6950 GBP pp