



The Small Cruise  
Ship Collection

www.small-cruise-ships.com



small-cruise-ships.com

info@small-cruise-ships.com

## SECRET TREASURES OF THE LESSER ANTILLES LUXURY CRUISE

From the Dominican Republic to the volcanic shores of Martinique, set off on a journey around the Lesser Antilles. During this trip around the British Virgin Islands, Montserrat, Guadeloupe and Dominica, discover lands shaped by the elements, with spectacular reliefs, lush forests and a sea of profound shades. Explore vibrant island cultures, heirs to a blend of influences, and surrender to a way of life imbued with Creole authenticity.



### ITINERARY

#### Day 1 - Fort-de-France

Located on the western coast of Martinique, Fort-de-France will amaze you by the splendour of its bay, a magnificent cut-out in the coastline, considered as one of the most beautiful in the world. At the harbour mouth, on its strip of land, **fort Saint-Louis** overlooks the capital city of Martinique. If you climb up to it, you can see some breath-taking views. **Saint Louis Cathedral** and the Schoelcher library bear witness to a secular history, intimately linked to the island's story. Why not try some fresh coconut at the colourful Grand Marche. Two really pleasant places you can take a breather in, right in the heart of the city, are the garden of Balata and the Aime Cesaire park.

The Small Cruise  
Ship Collection

www.small-cruise-ships.com

01432 507 280 (within UK)

info@small-cruise-ships.com | small-cruise-ships.com



## The Small Cruise Ship Collection

[www.small-cruise-ships.com](http://www.small-cruise-ships.com)

[small-cruise-ships.com](http://small-cruise-ships.com)

[info@small-cruise-ships.com](mailto:info@small-cruise-ships.com)

### Day 2 - Speightstown

Located on the west coast of Barbados, **Speightstown** is the island's second-largest town and one of its oldest urban centres. Founded in the 17th century as a trading port, it retains a **well-preserved colonial heritage**, with several historic buildings overlooking the sea. Succumb to the charm of this picture-postcard destination featuring long beaches, colonial heritage and an authentic atmosphere.

### Day 3 - Deshaies

The port of **Deshaies** has a magnificent setting on the north-west coast of **Basse-Terre** Island, the western half of **Guadeloupe**. Nestling in the crook of a pretty bay on the Caribbean Sea, the village of wooden Creole-style houses extends along the foot of hillsides covered in tropical rainforest. Beyond the bay, the former property of famous French comedian Coluche is now a magnificent **botanical garden** where you can wander among West Indian trees and flowering plants and spot exotic birds. A little farther to the north is **Grande Anse** beach, one of most beautiful on the island.

### Day 4 - Roseau

The capital of **Dominica**, part of the **Caribbean archipelago**, **Roseau** is a placid town to be explored at your leisure on foot. From the cathedral Our Lady of Fair Haven, perched upon a volcanic hillside, there is the most stunning view over the town and its bay. Take a leisurely walk around Roseau's **Botanical Gardens**, one of the richest in Dominica and home to a very famous baobab tree. The adjacent streets, bordered by lopsided wooden houses, lead to an excellent local arts and crafts market and a visit to the museum of Dominica offers a valuable insight into the geographical, economic and political history of the archipelago.

### Day 5 - Little Bay

Nestling on the Caribbean coast of Montserrat, **Little Bay** is set around a tranquil cove fringed by **turquoise waters** and hills covered in **lush vegetation**. Here, the sea blends seamlessly with the tropical landscapes that make this 'island of flowers' so special. Between **mangroves, coral reefs and verdant forests**, nature reveals its full diversity, providing a haven for colourful wildlife and flora typical of the Caribbean.

### Day 6 - Jost Van Dyke

During your cruise, discover the pearl of the **British Virgin Islands**, said to have been named after a fearsome Dutch pirate from long ago. The hilly landscape offers travellers beautiful wild expanses lined with immaculate beaches where the breeze gently caresses the coconut palms. In this slice of heaven with crystal-clear waters, you will be able to enjoy the **lively atmosphere of White Bay**. As for the wildlife, iguanas, mongooses, pelicans and blue herons have taken up residence on these islands, much to the delight of our passengers who love a good holiday snap!

### Day 7 - Punta Cana

Anchored at the eastern tip of the Dominican Republic, **Punta Cana** inspires. Its white-sand beaches lined with majestic palm trees stretch out before a sea of endless turquoise hues. **A haven for nature**, this corner of paradise with a distinctive atmosphere offers the perfect blend of sunshine, sea breeze and enchanting landscapes. The coral reefs reveal a vibrant underwater world inviting contemplation.

### Day 8 - La Romana

The seaside resort of La Romana is ideally located in the south east of the Dominican Republic. In Casa de Campo, **luxury**



The Small Cruise Ship Collection

[www.small-cruise-ships.com](http://www.small-cruise-ships.com)

01432 507 280 (within UK)

[info@small-cruise-ships.com](mailto:info@small-cruise-ships.com) | [small-cruise-ships.com](http://small-cruise-ships.com)



villas and golf\*\* \*\*courses\*\* overlook the turquoise waters of the \*\*Caribbean Sea\*\*. Above the River Chavon, a surprising reconstruction of an Italian mediaeval village and Roman amphitheatre serves as the backdrop for a great variety of cultural events. A museum of pre-Columbian archaeology, an American design school, and many artists and artisans have set up in this flowery village. Just off the coast, the idyllic islands of Catalina and Saona are edged with white sandy beaches and palm trees.

Please note:

Itineraries are subject to change.



The Small Cruise  
Ship Collection

[www.small-cruise-ships.com](http://www.small-cruise-ships.com)

[small-cruise-ships.com](http://small-cruise-ships.com)

[info@small-cruise-ships.com](mailto:info@small-cruise-ships.com)

## YOUR SHIP: LE CHAMPLAIN

**YOUR SHIP:** Le Champlain

**VESSEL TYPE:**

**LENGTH:**

**PASSENGER CAPACITY:**

**BUILT/REFURBISHED:**

Featuring innovative and environmentally-friendly equipment, elegantly designed cabins, spacious suites with large windows, and lounge areas that open onto the outside, this new limited-capacity yacht boasting just 92 cabins and suites will offer you a truly unique cruising experience. As the first ship in a new series, Le Champlain will embody the unique atmosphere that is the cruise line's hallmark: a subtle blend of refinement, intimacy and comfort. Aboard this ship that flies the French flag, you will experience the incomparable pleasure of an intimate cruise, with the possibility of exploring an ever-increasing range of destinations in an ethnic-chic ambiance with luxury service. Experience a luxurious setting where the accent is on authenticity and passion for travel. **RESTAURANTS** As it is an essential part of French culture, gastronomy will naturally have pride of place aboard this new ship. Through its two restaurants, Le Champlain will invite you on a journey to elegance and epicureanism. In a relaxed atmosphere, a first dining area located on Deck 3 and able to seat 70 will serve grilled meats daily, along with a variety of salads and desserts. To the back of Deck 4, you will find a 260 m<sup>2</sup> panoramic restaurant which can accommodate all of our passengers in a single sitting. Designed

differently to that on our other ships, this dining area, which opens onto the outside, will have a buffet of salads, desserts and cheeses at your disposal. Our discreet and attentive crew will provide table service for hot meals. **PUBLIC AREAS** Like Le Boreal and its sisterships, Le Champlain has many common areas that are designed and equipped to meet all of your needs while preserving the intimacy of each passenger. A 140 m<sup>2</sup> reception area includes: A reception/concierge desk, An excursions desk, The ship's administrative services, The sales office, manned by our Guest Relations Officer, Our 50 m<sup>2</sup> boutique which sells clothing, jewellery, beauty products, postcards and various accessories, Toilets accessible to passengers with reduced mobility. A new hydraulic platform with adjustable height provides: Easier boarding than on any other cruise ship, Easier Zodiac embarkation and disembarkation for expeditions, Easier access to the sea for swimming and practising various water sports such as kayaking or paddle-boarding. A pool deck offering: A pool with a panoramic view, equipped with a counter-current swimming system, A pleasant solarium, An outdoor bar and lounge with armchairs and sofas. A 200 m<sup>2</sup> main lounge which can accommodate all of our passengers to share convivial moments and to host activities organised during the day or evening. Lastly, a theatre that seats 188, equipped with: The latest sound and lighting technology, A LED wall as the stage backdrop, for the projection of high-resolution images and videos. Please click the following links to read more about Ponant and the other Ponant

The Small Cruise  
Ship Collection

[www.small-cruise-ships.com](http://www.small-cruise-ships.com)

01432 507 280 (within UK)

[info@small-cruise-ships.com](mailto:info@small-cruise-ships.com) | [small-cruise-ships.com](http://small-cruise-ships.com)



cruise ships.



# The Small Cruise Ship Collection

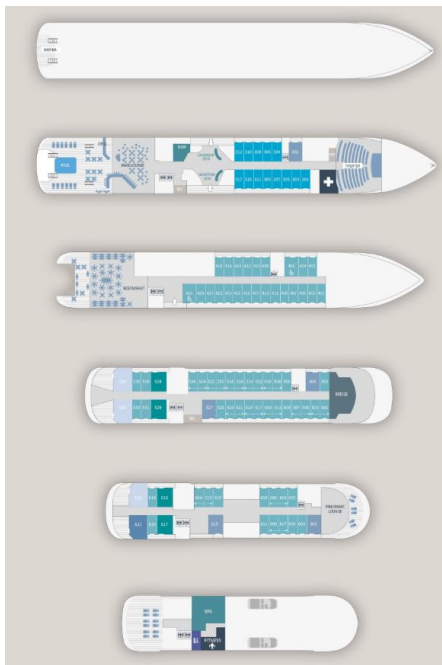
[www.small-cruise-ships.com](http://www.small-cruise-ships.com)



[small-cruise-ships.com](http://small-cruise-ships.com)

[info@small-cruise-ships.com](mailto:info@small-cruise-ships.com)

## INSIDE YOUR SHIP



Deluxe Stateroom

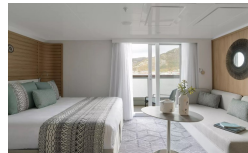


Deluxe Suite Deck 3



Deluxe Suite Deck 4

Deluxe Suite Deck 5



Deluxe Suite Deck 6

Grand Deluxe Suite

Owner's Suite

Prestige Stateroom Deck 4

Prestige Stateroom Deck 5

Prestige Stateroom Deck 6

Prestige Suite Deck 5

Prestige Suite Deck 6

Privilege Suite Deck 5

Privilege Suite Deck 6



# The Small Cruise Ship Collection

www.small-cruise-ships.com



small-cruise-ships.com

info@small-cruise-ships.com

## PRICING

### 05-Jan-2028 to 12-Jan-2028

Privilege Suite Deck 5	£5775 GBP pp
Grand Deluxe Suite	£5945 GBP pp
Deluxe Suite Deck 6	£5075 GBP pp
Prestige Stateroom Deck 5	£3645 GBP pp
Prestige Stateroom Deck 6	£3785 GBP pp
Privilege Suite Deck 6	£5775 GBP pp
Prestige Stateroom Deck 4	£3545 GBP pp
Prestige Suite Deck 6	£5635 GBP pp
Prestige Suite Deck 5	£5465 GBP pp
Owner's Suite	£8085 GBP pp
Deluxe Suite Deck 5	£5075 GBP pp
Deluxe Suite Deck 4	£5075 GBP pp
Deluxe Suite Deck 3	£5075 GBP pp
Deluxe Stateroom	£3365 GBP pp

Prestige Suite Deck 5	£5465 GBP pp
Prestige Stateroom Deck 6	£3785 GBP pp
Owner's Suite	£8085 GBP pp
Privilege Suite Deck 6	£5775 GBP pp
Privilege Suite Deck 5	£5775 GBP pp
Prestige Suite Deck 6	£5635 GBP pp
Prestige Stateroom Deck 4	£3545 GBP pp
Deluxe Suite Deck 6	£5075 GBP pp
Deluxe Suite Deck 5	£5075 GBP pp
Deluxe Suite Deck 4	£5075 GBP pp
Deluxe Suite Deck 3	£5075 GBP pp
Deluxe Stateroom	£3365 GBP pp
Grand Deluxe Suite	£5945 GBP pp
Prestige Stateroom Deck 5	£3645 GBP pp

### 09-Feb-2028 to 16-Feb-2028



The Small Cruise Ship Collection

www.small-cruise-ships.com

01432 507 280 (within UK)

info@small-cruise-ships.com | small-cruise-ships.com