



The Small Cruise Ship Collection

www.small-cruise-ships.com

small-cruise-ships.com

info@small-cruise-ships.com

SALTWATER COUNTRY & CULTURE - AUSTRALIA SMALL SHIP CRUISE

From remote saltwater communities to volcanic coastlines, this voyage celebrates Indigenous ingenuity and resilience, revealing stories of culture, connection, and living Country.



ITINERARY

Day 1: Darwin | Wurrumiyanga

Embark in Darwin and set course for the Tiwi Islands. Be welcomed through art, dance, and storytelling before visiting Tiwi Design and the Patakijiyali Museum to discover the deep creative traditions of the Tiwi people.

Melville Island | Milikapiti

Experience traditional Tiwi knowledge meeting modern sustainability. Visit Milikapiti Farm and Nursery and hear from Tiwi Land and Sea Rangers on their pioneering role in Australia's carbon economy.

RAMSAR Wetlands, Cobourg Peninsula

Cruise through Australia's first RAMSAR-listed wetlands at sunrise. Encounter mangroves, monsoon forests, and over 230 bird species during an Xplorer-led birdwatching expedition across this globally significant ecosystem.

Elcho Island | Galiwin'ku

The Small Cruise Ship Collection

www.small-cruise-ships.com

01432 507 280 (within UK)

info@small-cruise-ships.com | small-cruise-ships.com



The Small Cruise Ship Collection

www.small-cruise-ships.com

small-cruise-ships.com

info@small-cruise-ships.com

Engage with Yol u culture through bark painting, spear making, and bush tucker walks. Meet students from the local Maritime College and gain insight into how traditional knowledge shapes future pathways.

[Daliwuy Bay, Cape Arnhem](#)

Walk the 3.2km coastal trail with Dhimurru Rangers to view the heritage Wurrwurrwuy stone pictures, records of early trade with Makassan visitors. Later, cruise along striking volcanic red coastlines by Xplorer.

[Port Bradshaw | Bawaka](#)

Be welcomed to Bawaka homeland for stories, song, and dance with the Gumatj people. Share lunch with locals and cruise to the secluded Lonely Beach, where the land and sea connect in quiet splendour.

[At Sea](#)

Sail eastward, taking time to reflect on the stories, knowledge, and landscapes shared. Enjoy onboard presentations and horizon views as we cross towards the Torres Strait.

[Thursday Island & Pajinka \(The Tip\)](#)

Tour Thursday Island's cultural landmarks and hear stories of the Torres Strait flag and pearl diving past. As evening falls, raise a glass at Pajinka, the northernmost point of Australia.

[Masig \(Yorke\) Island](#)

Join the vibrant Masig Island community for dance, music, and conversation about resilience and climate action. Enjoy a traditional meal and optional workshops in weaving, bush foods, or spear fishing.

[Mer \(Murray\) Island](#)

Visit the ancestral lands of Eddie Mabo and meet local artisans of the Black Bamboo enterprise. Explore the volcanic shores of Waua Islet and hear how community creativity sustains cultural and economic strength.

[Sea Day](#)

Sail the Coral Sea's tranquil waters, with time for reflection and discussions led by our guest lecturers on Indigenous agency, art, and the environment.

[Stanley Island | Yindayin](#)

Disembark for a guided walk to the remarkable rock art galleries depicting early European sailing ships. Learn from Traditional Owners about the reclamation of their ancestral lands.

[Day 14: Arrive Cairns](#)

Arrive in Cairns at 9:00am. Disembark after breakfast with included transfers to local hotels or the airport, carrying with you the spirit of saltwater country and its people.

[Please note:](#)

Embrace the unexpected - it's part of the adventure. This itinerary is a guide. We adjust plans based on weather, tides, wildlife, and opportunities we encounter. Remote communities may be unavailable due to local customs. Flexibility makes expeditions special.

The Small Cruise Ship Collection

www.small-cruise-ships.com

01432 507 280 (within UK)

info@small-cruise-ships.com | small-cruise-ships.com



The Small Cruise Ship Collection

www.small-cruise-ships.com

small-cruise-ships.com

info@small-cruise-ships.com

YOUR SHIP: CORAL ADVENTURER

YOUR SHIP: Coral Adventurer

VESSEL TYPE:

LENGTH:

PASSENGER CAPACITY:

BUILT/REFURBISHED:

Launched in 2018 with her maiden voyage in 2019, Coral Adventurer has been designed and built to take you closer to unspoilt vistas in comfort, style and safety. A culmination of two years of design and three decades of passion for expedition cruising. BIGGER IS NOT BETTER At a time when cruise ships get larger and glitzier, we remain stubbornly compact and intimate. Our ships are designed to take you to unspoilt destinations not accessible to large ships. We want you to have the luxury of space, dine with whom you please, or find your quiet corner on deck. So Coral Adventurer has just 60 spacious cabins. This preserves the intimate atmosphere we are known for without sacrificing the stability and comfort of a true ocean going vessel. BUILT FOR DISCOVERY The Coral Adventurer features the trademark dual 'Xplorer' tenders cradled on a hydraulic platform slung off the back of the ship, enabling our guests to go ashore in comfort and ease. The shallow draft of the ship enables us to go closer to shore than larger ships. Together with a renowned expedition team, this new ship will offer the most advanced expedition capabilities of any small ship afloat. BUILT FOR COMFORT With active stabilisers dampening sea motion, mostly balcony cabins, and interiors designed with the colours and

textures of tropical Queensland, the Coral Adventurer is a comfortable ship. She features promenade decks, generous communal areas that accommodate all guests, a passenger elevator, and an open kitchen where you can observe our chefs whip up small batch cuisine from locally sourced ingredients. BUILT FOR PERSONAL SERVICE The Coral Adventurer will continue a proud tradition of Australian flagged vessels with friendly and professional Australian crew. The onboard atmosphere remains refreshingly informal and intimate. Take your seat at our bridge lounge, chat with the captain at your leisure or accompany our chefs on a market tour. Food and wine features Single seating dining area with communal 'wine table' finished with Australian stone; serving buffet breakfast and lunch, and multi-course table d'hote dinners Showcase galley visible to guests for fresh small-batch cuisine featuring Australian produce Multiple indoor and outdoor bars, including the Explorer bar on the sundeck for sunset drinks with 180 degree views Curated wine cellar featuring modestly priced boutique wines for daily drinking and exceptional vintage Australian reds. Guest comfort All outside guest cabins with en-suite bathrooms; majority have private balcony Active stabilisers to dampen sea motion Gym equipped with elliptical trainers and treadmills Passenger elevator Wi-Fi available in all

The Small Cruise Ship Collection
www.small-cruise-ships.com

01432 507 280 (within UK)

info@small-cruise-ships.com | small-cruise-ships.com



guest areas

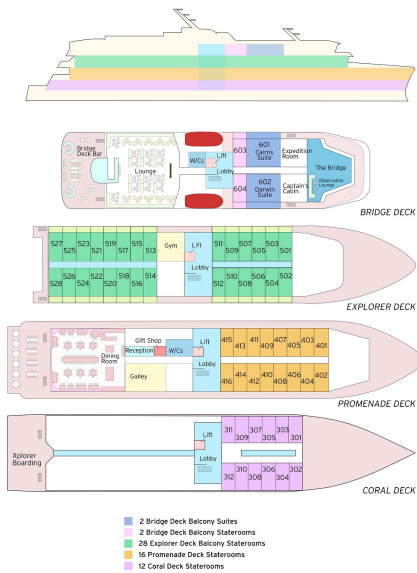
The Small Cruise Ship Collection

www.small-cruise-ships.com

small-cruise-ships.com

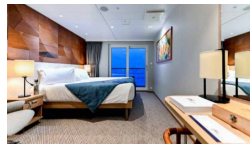
info@small-cruise-ships.com

INSIDE YOUR SHIP



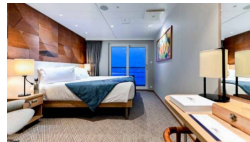
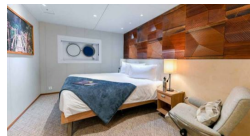
BRIDGE DECK BALCONY STATEROOM

BRIDGE DECK BALCONY SUITE

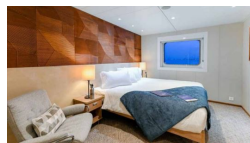


CORAL DECK STATEROOM

EXPLORER DECK BALCONY STATEROOM



PROMENADE DECK STATEROOM





The Small Cruise Ship Collection

www.small-cruise-ships.com

small-cruise-ships.com

info@small-cruise-ships.com

PRICING

02-Oct-2026 to 15-Oct-2026

CORAL DECK STATEROOM	£8245 GBP pp
EXPLORER DECK BALCONY STATEROOM	£12445 GBP pp
PROMENADE DECK STATEROOM	£9995 GBP pp
BRIDGE DECK BALCONY SUITE	£15645 GBP pp
BRIDGE DECK BALCONY STATEROOM	£13445 GBP pp

08-Sep-2027 to 21-Sep-2027

EXPLORER DECK BALCONY STATEROOM	£12445 GBP pp
PROMENADE DECK STATEROOM	£9995 GBP pp
BRIDGE DECK BALCONY SUITE	£15645 GBP pp
CORAL DECK STATEROOM	£8245 GBP pp
BRIDGE DECK BALCONY STATEROOM	£13445 GBP pp