



ROUNDTrip CRUISE TO ANTARCTICA FROM USHUAIA - 15 DAYS

Embark on the Antarctic Peninsula in Depth luxury cruise, a remarkable round trip adventure starting in Ushuaia. Known as the 'End of the World', this vibrant city at the foothills of the Martial Range marks both your departure and return point. Traverse the Drake Passage to reach the mesmerizing landscapes of the White Continent. During your journey, immerse yourself in the breathtaking scenery of the Antarctic Peninsula. Explore awe-inspiring spots like Mikkelsen Harbour, home to bustling colonies of gentoo penguins, snowy sheathbills, skuas, and Antarctic Weddell seals. With stunning glaciers, icebergs, and snowy islands surrounding you, this is where Antarctic dreams come to life. An array of captivating activities enhances the experience. Take part in a thrilling 'polar plunge' into icy waters, with a revitalizing hot chocolate awaiting you after. Attend expert-led lectures, sharpen your photography skills, or choose an optional kayaking expedition for a closer look at the peninsula's natural wonders.



ITINERARY

Days 0 - 1 Pre Cruise & Ushuaia

Nestled in the foothills of the snow-capped Martial Range, Ushuaia's colourful streets and mismatched buildings cascade from the imposing mountains before coming to an abrupt halt at the shores of the Beagle Channel. As one of the world's southernmost cities, Ushuaia carries its 'end of the world' reputation well. The moody weather and dramatic surroundings certainly help. Board your boutique ship before departing for your journey through one of the most captivating wilderness



regions of the world.

Days 2-3 Day at sea

Sea days are rarely dull. Take the time to sit back and let the world go by. The ship's observation decks provide stunning views of the passing ocean. A day at sea gives you the opportunity to mingle with other passengers and share your experiences of this incredible trip or head to our library which is stocked full of reference books. Get an expert's view in one of our on-board lectures or perhaps perfect your photography skills with invaluable advice from our onboard professional photographers.

Days 4-11 Antarctic Peninsula

Among captivating glaciers, majestic icebergs and snowy islands, the Antarctic Peninsula is where most visitors to the White Continent live their Antarctica dream. It's the most accessible part, with scientific bases and incredible scenery, like the photogenic Lemaire Channel. Shore excursions might include Mikkelsen Harbour, where among gentoo penguins, snowy sheathbills and skuas, Antarctic Weddell seals haul out.

Days 12-13 Day at sea

Sea days are rarely dull. Take the time to sit back and let the world go by. The ship's observation decks provide stunning views of the passing ocean. A day at sea gives you the opportunity to mingle with other passengers and share your experiences of this incredible trip or head to our library which is stocked full of reference books. Get an expert's view in one of our on-board lectures or perhaps perfect your photography skills

with invaluable advice from our onboard professional photographers.

Day 14 Ushuaia

Nestled in the foothills of the snow-capped Martial Range, Ushuaia's colourful streets and mismatched buildings cascade from the imposing mountains before coming to an abrupt halt at the shores of the Beagle Channel. As one of the world's southernmost cities, Ushuaia carries its 'end of the world' reputation well. The moody weather and dramatic surroundings certainly help. Board your boutique ship before departing for your journey through one of the most captivating wilderness regions of the world.

Please note:

Itineraries are subject to change.



YOUR SHIP: MINERVA

YOUR SHIP: Minerva

VESSEL TYPE:

LENGTH:

PASSENGER CAPACITY:

BUILT/REFURBISHED:

The 5 star elegant Scandi-design boutique ship offers you an intimate setting from which you will be fully immersed in all the sights and scenery of your voyage. Introducing SH Minerva Minerva has been designed to journey to off the beaten path destinations and remote polar regions in style and comfort. The ship incorporates a PC5 ice-strengthened hull combined with extra-large stabilisers to make your journey as smooth as possible. Sophisticated Elegance We know how important outdoor space is, so our spacious, relaxing public spaces provide wide open, unobstructed views throughout the ship. The destination will always be in view. Your Wellbeing The safety & happiness of the guests is paramount to the 120-strong crew on board as well as the passionate expedition team who'll be serving up thrilling shore excursions and lasting memories. Cabin Types The 76 cabins including 6 suites have all the amenities you will need to feel comfortable including dressing gowns, hairdryers, personal safes and minibars. The stylish cabins all have desks, a dressing area and comfy seating. En suite bathrooms all feature glass-enclosed rain showers. Wheelchair access Guests who use wheelchairs must bring their own, as we have only a small number of wheelchairs stored

onboard for emergencies. To ensure ease of movement on the ship, wheelchairs and mobility aids must be no wider than 65cm. All mobility or medical equipment brought on board must be capable of being carried safely and must be declared before sailing. To ensure that all guests can safely evacuate during an emergency, guests requiring a wheelchair can only be accommodated in our ADA-accessible cabins. There is an Oceanview stateroom on Vega which is specifically designed to be completely ADA compliant and have a fully operable wheelchair-access wet unit. Vega has two lifts, serving every passenger deck apart from the Stargazing top deck, which is, therefore, more difficult to access, as are the Aft Marina and Swan's Nest forward observation platform. Also, we don't have special equipment to access the swimming pool, jacuzzi, or sauna. Otherwise, the ship is entirely at your disposal. Many of the expeditions ashore in remote places are by Zodiac. Boarding these boats and returning aboard can present challenges for wheelchair users, as can navigating uneven terrain. These challenges are by no means always insurmountable, though, and our highly experienced crew is trained to provide reliable advice and assistance. They will make every effort to ensure wheelchair-using guests enjoy a memorable experience at each destination. Our general guidance, however, is to recommend wheelchair users travel with a companion for their ease and enjoyment. If you prefer to remain aboard, our panoramic interiors and ample open decks ensure an immersive, intimate experience of your inspiring



The Small Cruise Ship Collection

www.small-cruise-ships.com



small-cruise-ships.com

info@small-cruise-ships.com



surroundings.

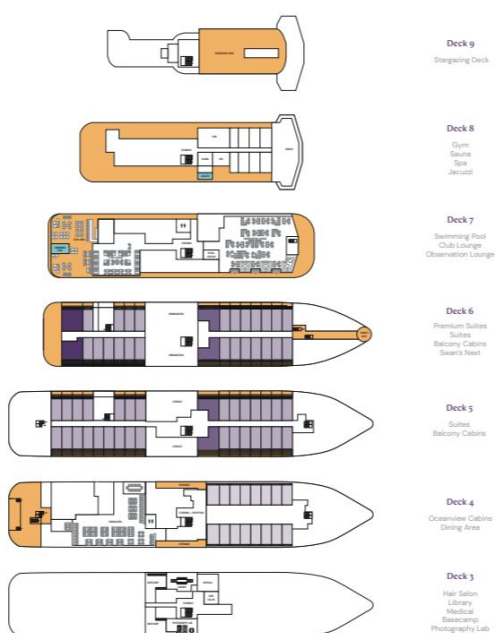
The Small Cruise Ship Collection

www.small-cruise-ships.com

small-cruise-ships.com

info@small-cruise-ships.com

INSIDE YOUR SHIP



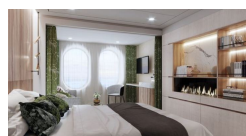
Balcony D5



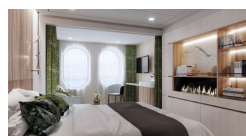
Balcony M5



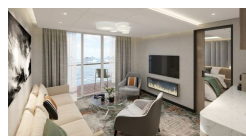
Oceanview D4



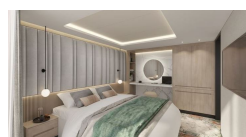
Oceanview M4



Premium Suite



Suite





The Small Cruise Ship Collection

www.small-cruise-ships.com



small-cruise-ships.com

info@small-cruise-ships.com

PRICING

24-Feb-2026 to 10-Mar-2026

Premium Suite	£21690 GBP pp
Suite	£18990 GBP pp
Balcony M5	£13440 GBP pp
Balcony D5	£12890 GBP pp
Oceanview M4	£9750 GBP pp
Oceanview D4	£10740 GBP pp

21-Dec-2026 to 04-Jan-2027

Balcony M5	£13440 GBP pp
Oceanview M4	£11290 GBP pp
Balcony D5	£12890 GBP pp
Premium Suite	£21690 GBP pp
Suite	£18990 GBP pp
Oceanview D4	£10740 GBP pp



The Small Cruise Ship Collection

www.small-cruise-ships.com

01432 507 280 (within UK)

info@small-cruise-ships.com | small-cruise-ships.com