

## The Small Cruise Ship Collection

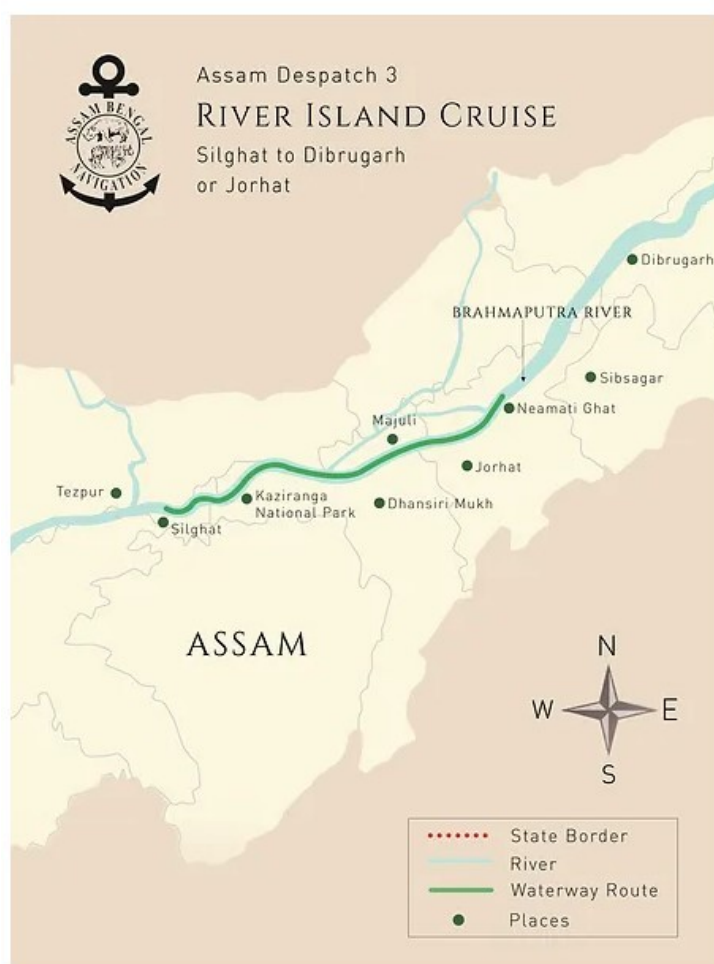
[www.small-cruise-ships.com](http://www.small-cruise-ships.com)

[small-cruise-ships.com](http://small-cruise-ships.com)

[info@small-cruise-ships.com](mailto:info@small-cruise-ships.com)

## RIVER ISLAND CRUISE WITH KAZIRANGA NATIONAL PARK

This cruise on the highest reaches of the Brahmaputra still navigable highlights the unique culture of the area, fusing Indian and S.E. Asian influences, with a visit to Sibsagar, the old capital of the Ahom kings, as well as to Majuli Island with its unique Hindu monastic communities famous for their dance drama. Wildlife is not forgotten, and the cruise also visits Kaziranga, where sightings of rhino are virtually guaranteed.



### ITINERARY

DAY 1 Jorhat

The Small Cruise Ship Collection  
[www.small-cruise-ships.com](http://www.small-cruise-ships.com)

01432 507 280 (within UK)

[info@small-cruise-ships.com](mailto:info@small-cruise-ships.com) | [small-cruise-ships.com](http://small-cruise-ships.com)



## The Small Cruise Ship Collection

[www.small-cruise-ships.com](http://www.small-cruise-ships.com)

[small-cruise-ships.com](http://small-cruise-ships.com)

[info@small-cruise-ships.com](mailto:info@small-cruise-ships.com)

Arrive at Jorhat airport and drive 2 ½ hrs to Silghat, a lovely beach below jungle-covered hills and close to Kaziranga National Park. Alternatively, arrive at Guwahati airport and drive 4 ½ hrs to Silghat.

### DAY 2 Kaziranga National Park

Today after an early breakfast, drive to Kaziranga's Central Range for a morning jeep safari. Covering an area of approximately 430 sq kms, the UNESCO World Heritage Site of Kaziranga National Park is home to the world's largest population of the Indian One-Horned Rhinoceros as well as the Indian Wild Water Buffalo. It has also earned the distinction of having the highest density of Royal Bengal Tigers (one every five sq. km.) making this park an incredibly rich biodiversity hotspot. With its marshy swamps and thickets of elephant grass, this park supports large populations of Indian elephants, Indian bison, swamp deer, and Capped Langurs. Besides wildlife, Kaziranga National Park is also a birding paradise. A few of the bird species found here are the Oriental Honey Buzzard, Black-shouldered Kite, White-tailed Eagle, Himalayan Griffon and so on. Kaziranga National Park also frequently draws comparisons to the Serengeti in Africa due to the park's abundance of wildlife and birds. Returning to the ship, we cruise upstream with Kaziranga National Park on the right bank to anchor for the night at Vishnath.

### DAY 3 Vishnath

This morning, visit Vishnath, known for an Ahom-period Shiva

temple. Walk through the town before reboarding and setting off again, with Kaziranga still on the far bank. Wild elephants may sometimes be spotted and once, memorably, even a tiger. Good chance of spotting the endangered Gangetic dolphin, as well as creating a sensation in bankside villages as we pass. Arrive in the evening at Lonely Dhansiri Mukh.

### DAY 4 Kaziranga National Park

This morning, we land and take a jeep safari to Kaziranga's little-visited Eastern Range, with grasslands much favoured by rhinos where you might also spot the rare Bengal Florican. Return to the boat and continue our cruise upstream.

### DAY 5 River Sailing and village visit

Another opportunity to watch life unfold on the riverbanks as you cruise upstream. The languid pace of life onboard the boat offers a rare opportunity to sit and watch the world slip by, chat with fellow guests, or catch up on your reading. You'll have time to stretch your legs with a walk through a bankside village, gaining an insight into life in rural India.

### DAY 6 Majuli Island

Around the time of breakfast, we should reach Majuli Island, one of the world's largest river islands. A microcosm of Assamese culture, Majuli represents rural idyll in Assam. A stronghold of the peaceful religion of neo-Vaishnavism, the elegant island satras -- some for celibate monks, some for



families -- showcase a unique way of life where the faithful live simply, offering worship through gayan-bayan (songs and musical instruments) and readings. We visit a monastery at Auniati with an eclectic museum, then attend a dance performance at Kamalabari monastery, before cruising across to Neamati Ghat on the opposite bank. In the afternoon, visit a nearby village.

#### DAY 7 Horu Charai tea estate

We visit Horu Charai tea estate, in the outskirts of Jorhat, this morning and witness all the processes of tea production. (Note: the factory is inoperative between December and mid-March.) Later, drive for about an hour to Sibsagar, the one-time capital of the Ahom kings of Assam. Shan by origin but converts to Hinduism, the Ahoms ruled Assam for some 700 years until the 1820s. Their culture and architecture is a strange and delightful amalgam of India and Southeast Asia. We shall see temples with stupa-like profiles and palaces of distinctive form. For the record book, the temple tank here is believed to be the world's largest hand-excavated reservoir. Return to your ship, which will have cruised up to Neamati Ghat, close to Jorhat.

#### DAY 8 Dibrugarh

This morning, drive for 4 ½ hours to Dibrugarh airport, passing through this typical colonial town and major base for American flights over 'The Hump' to China in WWII. Alternatively, drive for around 1 ½ hours to Jorhat airport and depart.

Please Note:

## The Small Cruise Ship Collection

www.small-cruise-ships.com

small-cruise-ships.com

info@small-cruise-ships.com

### YOUR SHIP: ABN CHARAIDEW II

**YOUR SHIP:** ABN Charaidew II

**VESSEL TYPE:**

**LENGTH:**

**PASSENGER CAPACITY:**

**BUILT/REFURBISHED:**

ABN Charaidew II, entered service on the Brahmaputra in January 2019. Built in Kolkata, her length is 44.50 m and breadth is 11.00 m and is powered by 2 engines. Her extra-shallow draught and a lower profile than conventional designs allow her to cruise faster. ABN Charaidew II has 18 cabins in total: 2 spacious deluxe cabins (350 sq. feet) and 12 spacious twin/double cabins (240 sq. feet.) are on the upper deck while 4 cabins with queen size bed (170 sq. feet) are on the main deck for which we charge no supplement. The decor reflects a sense of homecoming to Assam, with touches of colonial elegance, brought to life by traditional Assamese designs on hand-woven cotton fabrics. All standard cabins on ABN Charaidew II have French balconies, while the two deluxe cabins have a private balcony. There is a comfortable saloon and bar, dining room, a big open sundeck, gym, and a small spa onboard which offers a wide range of treatments. **ONBOARD FEATURES** Spacious cabins with individual climate control En suite shower/WC with Biotique toiletries Generous cupboard space and under-bed storage Hair drier in each cabin Minibar in each cabin In-room electronic safe Tea/coffee making facilities in cabins Intercommunication telephone in cabins High quality

bathrobes and slippers in cabins Large sliding glass windows offering panoramic views of the river Vast sundeck both open and shaded, with sofas and sun loungers Spacious air-conditioned saloon Mini library Spa with choice of treatments In-house gym **SERVICES** Shore excursion program including all admissions Services of in-house guide and naturalist during excursions and onboard Cold towel service after excursions Welcome drink after excursions Shoe-cleaning after excursions Turndown service in all cabins Expertly trained culinary staff Single seating for buffet breakfast, lunch and dinner Acclaimed combination of Indian and Western cuisines Wide choice of wines, spirits and beer Complimentary tea, coffee and packaged water throughout Welcome reception Farewell reception Local on-board dance & song performances 24/7 power backup Wi-Fi internet in the saloon, sundeck; dining hall (subject to network availability) during



the day time.

The Small Cruise Ship Collection  
www.small-cruise-ships.com

01432 507 280 (within UK)

info@small-cruise-ships.com | small-cruise-ships.com

# The Small Cruise Ship Collection

www.small-cruise-ships.com

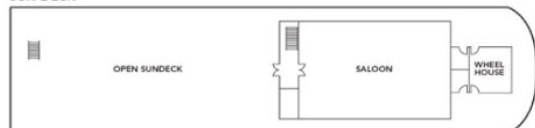
small-cruise-ships.com

info@small-cruise-ships.com

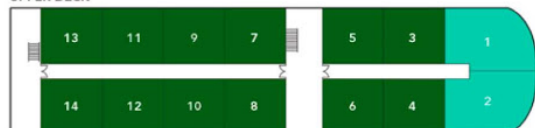
## INSIDE YOUR SHIP

### ABN CHARAIDEW II

SUN DECK



UPPER DECK

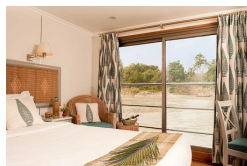


MAIN DECK

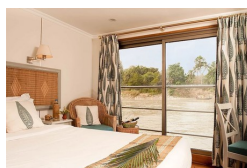


UPPER DECK DELUXE CABIN (399 Sq. Ft.) WITH KING SIZE BED  
UPPER DECK STANDARD TWIN/DOUBLE CABIN (340 Sq. Ft.)  
MAIN DECK STANDARD CABIN (179 Sq. Ft.) WITH QUEEN SIZE BED

Main deck cabin



Main deck cabin for single occupancy



Upper Deck Cabin

Upper deck Deluxe Cabin



Upper deck cabin

Upper deck cabin for single occupancy



## The Small Cruise Ship Collection

[www.small-cruise-ships.com](http://www.small-cruise-ships.com)

[small-cruise-ships.com](http://small-cruise-ships.com)

[info@small-cruise-ships.com](mailto:info@small-cruise-ships.com)

## PRICING

### 17-Nov-2025 to 24-Nov-2025

Upper deck cabin for single occupancy	£4339 GBP pp
---------------------------------------	--------------

Upper Deck Cabin	£2857 GBP pp
------------------	--------------

### 08-Dec-2025 to 15-Dec-2025

Upper Deck Cabin	£2857 GBP pp
------------------	--------------

Upper deck cabin for single occupancy	£4339 GBP pp
---------------------------------------	--------------

### 27-Dec-2025 to 03-Jan-2026

Main deck cabin for single occupancy	£2129 GBP pp
--------------------------------------	--------------

Main deck cabin	£2129 GBP pp
-----------------	--------------

Upper deck cabin	£2587 GBP pp
------------------	--------------

Upper deck Deluxe Cabin	£2857 GBP pp
-------------------------	--------------