



The Small Cruise Ship Collection

www.small-cruise-ships.com

small-cruise-ships.com

info@small-cruise-ships.com

RAJA AMPAT CRUISE IN INDONESIA - FOOD, FOOTBALL AND FUN

The things you can 't put in brochures _Keep scrolling down to read the full story and see all the pictures_ We reached Mutus Island in Indonesia's Raja Ampat region early in the morning. Mutus is tiny--roughly 600 by 400 metres--and home to just one village. As we stepped ashore, we were greeted by what can only be described as the entire population. Children in school uniforms, parents, elders, fishermen, teachers--everyone had come down to welcome us. Firepits smouldered with fresh fish and chicken. Coconuts were decapitated for drinks. People were singing, dancing, smiling--pretty much everything short of releasing doves on cue. Villages often put on a welcome for visitors, but this one felt different--there was a sincerity and warmth that stood out. I asked one of the elders why they had gone to such lengths. "_How many people travel on your ship_" he asked. "_About 115 passengers_" I told him. He nodded. "_Then I tell you why we are here. This year, we will have 115 visitors to our island_" That stops you in your tracks. After the dancing came a few short speeches. Our expedition leader provided the local school with boxes of books, equipment, and--being a Kiwi--rugby balls as well as footballs. The rugby balls were accepted with polite confusion and the footballs with immediate enthusiasm. A challenge was immediately issued, and soon we were on the football pitch--approximately 5% of the island's land area--for a chaotic 25 a side match. After half an hour, an honourable draw was declared. To be fair, we were playing the primary school kids; if any of the older boys had joined in, the scoreline might have resembled a rugby match score. Once we'd cooled off with a quick dip, I joined a group planting mangrove saplings. The

village runs a small mangrove restoration project to help counter rising sea levels. It was a joyous, memorable morning--followed by lunch back on board and then a spectacular afternoon at Pianemo. But that part _is_ in the brochure (see photo below). The Bird List Before that day, I had never played football with sulphur crested cockatoos squawking from treetops beside the pitch. Despite its size--and the fact it's inhabited--Mutus Island hosted an impressive variety of birdlife. Among the species spotted were Spice Imperial Pigeon, Striated Heron, Varied and Indonesian Brown Honeyeaters, Great Frigatebird, an Osprey dining on a fish atop a phone tower, Torresian Crows, White breasted Woodswallows, Moluccan and Singing Starlings, Sahul Sunbird, and multiple kingfisher species including Beach, Collared, and Sacred. Shorebirds included Pacific Golden Plovers, Greater and Siberian Sand Plovers, Eurasian Whimbrel, Eurasian Curlew, Ruddy Turnstone, Red necked Stint, and Terek and Common

Sandpipers.

ITINERARY

[Heritage Adventurer cruises in Asia](#)

We visited Mutus Island on Heritage Adventurer - [Click here to see Heritage Adventurer cruises in the Far East](#)

The Small Cruise Ship Collection

www.small-cruise-ships.com

01432 507 280 (within UK)

info@small-cruise-ships.com | small-cruise-ships.com



The Small Cruise Ship Collection

www.small-cruise-ships.com

small-cruise-ships.com

info@small-cruise-ships.com

YOUR SHIP: HERITAGE ADVENTURER

YOUR SHIP: Heritage Adventurer

VESSEL TYPE:

LENGTH:

PASSENGER CAPACITY:

BUILT/REFURBISHED:

Heritage Adventurer is a true pioneering expedition vessel of exceptional pedigree. Often referred to as the 'Grande Dame of Polar Exploration' due to her celebrated history and refined design, she was purpose-built for adventure in 1991 at Finland's Rauma shipyard and specifically designed for Polar exploration. Setting a peerless standard in authentic expedition travel, Heritage Adventurer (formerly known as MS Hanseatic) combines the highest passenger ship ice-class rating (1A Super) with an impressive history of Polar exploration. Having held records for the most northern and southern Arctic and Antarctic navigations, and for traversing both the Northwest and Northeast Passages, makes Heritage Adventurer perfect for pioneering experiential expedition travel. Originally designed to accommodate 184 guests, Heritage Adventurer now welcomes just 140 expeditioners ensuring spacious, stylish and comfortable voyages, while a fleet of 14 Zodiacs ensures all guests are able to maximise their expedition adventure. Heritage Adventurer proudly continues our traditions of exceptional, personalised expedition experiences as Heritage Expeditions flagship. Observation Lounge - One of the most celebrated and best-known features of Heritage Adventurer is the awe-inducing

Observation Lounge, Library and Bar. Located on Deck 7 and perched directly above the Bridge, enjoy sweeping 270-degree views through floor to ceiling windows, perfect for wildlife spotting and quick access to the outer deck. Bring your binoculars to spot wildlife, observe the ever-changing landscape, write in your journal or relax with a book. Observation Deck - Enjoy 360-degree views from the highest point on the ship. The Observation Deck sits above the Observation Lounge and provides exceptional outside viewing options. Stretching the full width of the vessel, this is the perfect spot to take in the surrounding land and seascapes. Perfect on a sunny day, recline in the comfortable sun loungers protected from the wind and elements and watch your voyage unfold. The Bridge - No expedition is complete without visiting Heritage Adventurer's busy nerve centre. Located on Deck 6, Heritage Expeditions' Open Bridge Policy means you are welcome to observe the Captain and crew at work while enjoying some of the ship's best views. It's a fascinating place to learn about navigation and vessel operations, however please note the Bridge will be closed when departing or arriving at port. Dining Room - Indulge in fine international cuisine from our talented chefs in the lavish surrounds of our Dining Room on Deck 4. Sensational 270-degree views provide a stunning backdrop to meals here along with an international wine list featuring many outstanding regional wines. With relaxed seating arrangements, all guests can enjoy dining in a single sitting from hearty breakfasts setting you up for the day's adventure to sumptuous lunches and multi-course evening dining. Bistro - Simple fast and delicious meals and snacks are on offer in our relaxed

The Small Cruise Ship Collection

www.small-cruise-ships.com

01432 507 280 (within UK)

info@small-cruise-ships.com | small-cruise-ships.com

The Small Cruise Ship Collection

www.small-cruise-ships.com

small-cruise-ships.com

info@small-cruise-ships.com

Bistro on Deck 6. Perfect for early risers to enjoy tea, coffee and light breakfast options the Bistro provides great views and opens directly onto a covered and heated teak-deck outdoor dining area. The Bar and Lounge - The social hub of Heritage Adventurer, the Bar and Lounge on Deck 5 features seating for all guests. Enjoy a beverage at the bar, sink into an armchair, relax on one of the many spacious loungers and watch the world go by through the panoramic windows or make new friends at the communal seating. This multi-tasking space also doubles as the location of daily briefings and evening recaps with the expedition team. The Gym - Featuring spectacular ocean views, the well-equipped gym is adjacent to the pool, hot tub and sauna in Deck 7's wellbeing zone. Maintain your routine with an elliptical cross trainer, treadmill, rowing machine, stationary bikes, TRX as well as free weights, yoga mats and fitness balls. Towels are provided with change room and shower amenities nearby. Sauna and Steam Room - True to her Nordic origins, Heritage Adventurer features a dry-heat Finnish sauna and European steam room on Deck 7. Perfect for warming up post Polar plunge or unwinding after a day's adventures, the sauna and steam room include change room facilities, showers and towels. Swimming Pool and Hot Tub - Surrounded by relaxed teak seating including sun loungers, the open-air saltwater pool can be heated or chilled. Encased in glass the hot tub ensures all-weather use, perfect for those who like to relax with a view following a day of exploring. Lectures and Presentations - Enjoy informative and entertaining lectures on history, biology, wildlife, and ecology in the comfort of the Presentation Theatre. With state-of-the-art audio-visual equipment, our world-renowned expedition team will bring your adventure to life through interactive presentations and



discussions.

The Small Cruise Ship Collection

www.small-cruise-ships.com

01432 507 280 (within UK)

info@small-cruise-ships.com | small-cruise-ships.com

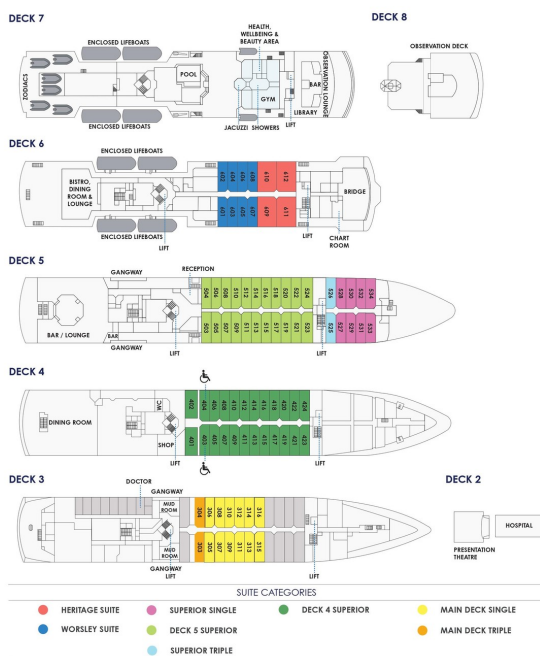
The Small Cruise Ship Collection

www.small-cruise-ships.com

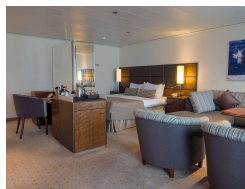
small-cruise-ships.com

info@small-cruise-ships.com

INSIDE YOUR SHIP



HERITAGE SUITES



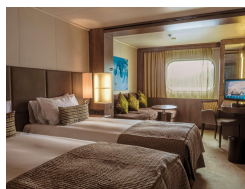
MAIN DECK SINGLE CABINS



Main deck Triple cabins



SUPERIOR CABINS DECK 4



SUPERIOR CABINS DECK 5

SUPERIOR SINGLE CABINS

SUPERIOR TRIPLE CABINS

WORSLEY SUITES



The Small Cruise
Ship Collection

www.small-cruise-ships.com

small-cruise-ships.com

info@small-cruise-ships.com

PRICING

04-Mar-2056 to 05-Mar-2056

Enjoy the moment	£99999 GBP pp
MAIN DECK SINGLE CABINS	Contact us
HERITAGE SUITES	Contact us
WORSLEY SUITES	Contact us
SUPERIOR CABINS DECK 5	Contact us
SUPERIOR CABINS DECK 4	Contact us
SUPERIOR TRIPLE CABINS	Contact us
Main deck Triple cabins	Contact us
SUPERIOR SINGLE CABINS	Contact us