

The Small Cruise Ship Collection

www.small-cruise-ships.com

small-cruise-ships.com

info@small-cruise-ships.com

RAJA AMPAR & SPICE ISLANDS - INDONESIA EXPEDITION

The rich history and diverse marine life of Raja Ampat and Spice Islands are brought to life on this 18-night voyage. Aboard Coral Geographer retrace the ancient trade routes of spice merchants trading Chinese silks for cloves, Indian cotton for nutmeg and Arabian coffee for pepper. Explore some of the hundreds of rarely visited islands of Raja Ampat whose waters harbour over 75% of the world's coral and fish species. At Cenderawasih Bay, swim with the gentle whale sharks - the largest living non-mammalian vertebrate - in what guests describe as a 'once in a lifetime experience.' Walk through vibrant village markets. Experience a traditional welcome at Banda Neira where our ship is serenaded by kora kora canoes. Enjoy the view over sunset drinks at 17th century Dutch Fort Belgica. Climb atop Mount Pindito to marvel at one of the world's most photographed marine scenes: the jagged green limestone cliffs and crystal clear water of Wayag.



ITINERARY

DAY 1: DEPART DARWIN / SORONG

Embark Darwin: Board at Darwin's Fort Hill Wharf at 6:30am for 8:00am departure. Spend the afternoon becoming acquainted with all the facilities onboard as we cruise northwards towards the Spice Islands. Embark Sorong: An optional charter flight is available from Darwin (at an additional indicative cost of \$1200pp). Check in at 6:00am for a 8:00am departure accompanied by our Expedition Team. On arrival in Sorong, enjoy lunch at a local hotel before enjoying a local tour of Sorong prior to embarking Coral Geographer at 4:00pm for a 5:00pm departure. As dusk falls, join your fellow travellers at the Captain's Welcome this afternoon, while your Expedition Team shares the extraordinary things you will encounter on your voyage.

CROSSING THE TIMOR SEA



The Small Cruise Ship Collection

www.small-cruise-ships.com

small-cruise-ships.com

info@small-cruise-ships.com

Spend a relaxing day at sea as we cross the Timor Sea towards Saumlaki. Join our Expedition Team in the Lounge for an insightful information session on Raja Ampat and the Spice Islands as well as safety procedures and protocols while visiting Indonesia. After dinner, a movie or documentary will be featured.

YAMDENA ISLAND, SANGLIAT DOL

Sangliat Dol is a peaceful traditional village in the Tanimbar Islands of Maluku, the centre of the ancient "boat" culture of Maluku. Here boats were built to symbolize the arrival from sea of the original inhabitants of Maluku. Sangliat Dol village is one of few villages where the giant stone boat and the culture associated with it remains intact today. This afternoon after lunch onboard we will take a coach ride from the port of Saumlaki towards Sangliat Dol, passing verdant fields and plantations. We will be greeted by Village Elders and be taken into the heart of the village where the megalithic structure is located. Here the village structure still follows the organization of the original inhabitants. The village head is seen as the Captain or Master "steering" the direction of the village. Many other positions of the village basically translate as "helmsman", "harpooner", "bailer boy" and other boat related titles.

BANDA NEIRA - SPICE ISLANDS

The Banda archipelago is the historic heart of the spice trade and was once the world's only source of nutmeg until the

mid-19th century as Portuguese, Dutch and English fought for control over the spice trade. The ten volcanic islands have attracted traders and merchants for at least 2,000 years as highly sought-after goods such as cloves, textiles, batik and rice were moved through Banda. The Banda Islands are lushly vegetated with tropical flora including the Myristica Tree (nutmeg) while the Banda Sea's underwater lava flow reefs are popular for scuba diving and snorkelling. On our approach to Banda Neira, witness the outline of Gunung Api volcano with its thin plume of smoke often rising from the summit. Admire the photo-worthy spectacle of Moluccan paddlers propelling kora kora canoes with their elaborately carved figureheads. Snorkel and dive over the nearby lava flow reef system or explore ashore and enjoy local tea and snacks on the waterfront. Later in the afternoon, there is time to explore Fort Belgica, built by the first Governor-General of the Dutch East Indies (now Indonesia) in 1611. The pentagonal shaped fort is extremely well preserved and provides an interesting insight into Dutch colonisation. Join the locals for a traditional dance and music performance before enjoying a glass of sparkling wine as the sun sets over the fort.

BANDA NEIRA - SPICE ISLANDS

This morning, choose to explore the streets of Banda Neira on a guided tour, spotting colourful local houses and meeting friendly children before visiting a local nutmeg plantation to gain a fascinating insight into the spice that started it all. Alternatively, snorkelling over the nearby lava flow system will reward with spectacular colourful coral and fish species. You may spot Dogtooth tuna, mobula rays, or some of the largest population of Napoleon Wrasse in Indonesia. After lunch we farewell Banda Neira.

The Small Cruise
Ship Collection
www.small-cruise-ships.com

01432 507 280 (within UK)

info@small-cruise-ships.com | small-cruise-ships.com



The Small Cruise Ship Collection

www.small-cruise-ships.com

small-cruise-ships.com

info@small-cruise-ships.com

MOLANA ISLAND & SAPARUA ISLAND - SPICE ISLANDS

We start the day arriving early at Molana Island whose history stretches back to the Portuguese colonial era. This uninhabited private island is home to 85 species of trees, Pacific Monitor Lizards (*Varanus Indicus*), Moluccan Scrubfowl (*Megapodius Reinwardtii*) and Coconut Crabs. The island still contains the ruins of a hospital built by the Dutch, whose construction was interrupted by the Japanese occupation in World War II. Snorkelers can take advantage of the shallow corals and clear water with easy viewing of unique corals and plentiful fishes. Experienced divers may see an underwater cave that is connected to a well in the centre of the island. We head East to nearby Saparua Island where we are welcomed by singing school children. The area holds an important spot in history books which we learn at Fort Duurstede, a 17th- century Dutch fort with a complicated backstory that spans centuries. Here men and boys give us their war dance with shields, swords, and cultural adornment. This is a location of cultural immersion and learning.

SAWAI - SPICE ISLANDS

In the middle of the Banda Sea, Sawai village is on Seram Island and is one of the oldest villages in the Maluku Islands. The village is in a beautiful setting with simple homes built on stilts over the ocean. We will spend the day immersed in the crystal-clear waters and snorkelling over reefs. This is our final stop in the Spice Islands as we make our way to the natural playground of Raja Ampat.

MISOOL & THE STONE GARDENS OF MISOOL - RAJA AMPAT

Our introduction to the beautiful natural playground of Raja Ampat is at Misool, one of the four largest islands. Raja Ampat means the 'Four Kings' which refers to four main islands: Waigeo, Batanta, Salawati, and Misool, in an archipelago comprising over 1,500 smaller islands. At Misool we visit Balbulol Lagoon, an almost landlocked inlet populated with conical-shaped islets undercut at sea level that rise from turquoise waters like Christmas Trees. There is time to swim and kayak amongst the islands in this beautiful lagoon. We visit another similarly spectacular waterway at Yapap, considered one of the best natural pools in the world. This vast primordial pool is dotted with dramatic limestone formations which look more like chess pieces than rocks. The turquoise Yapap sea has such clarity that grains of sand and coral reefs on the seabed are visible from the surface. We also visit heart-shaped Dafalen Love Lake which can be viewed from up high with a climb to the summit of nearby cliffs. Swimming and diving in these pristine waters is an undisputed highlight of our Raja Ampat adventures.

KOFIAU ISLAND - RAJA AMPAT

At Kofiau Island we are welcomed by village dancers from their traditional boats before leading us ashore at Deer Village (also known as Kampung Deer). Local guides show us through their village before we board a local longboat which takes us to another village, Kampung Awat. Here we enjoy a traditional Sasi Opening Ceremony and a barbeque on the beach. Sasi is a traditional ceremony to preserve the ecosystem and effectively limits the catch of particular marine species during a designated

The Small Cruise
Ship Collection
www.small-cruise-ships.com

01432 507 280 (within UK)

info@small-cruise-ships.com | small-cruise-ships.com



The Small Cruise Ship Collection

www.small-cruise-ships.com

small-cruise-ships.com

info@small-cruise-ships.com

period. After lunch, we snorkel and swim in the ocean and pay visit to more vibrant villages.

WAYAG ISLAND - RAJA AMPAT

More Raja Ampat treasures await today as we explore the magnificent waterways and lagoons by Xplorer and Zodiac boats with time to swim in crystal clear waters and walk upon white-sand beaches amongst the many islands. After lunch, there is an opportunity for an energetic hike up to famed Pindito Peak, with hikers rewarded by panoramic views over the island and its spectacular lagoon. Alternatively, you can choose to relax by swimming, snorkelling, kayaking or a guided glass bottom boat tour.

AMSTERDAM ISLAND

Part of the Su Islands (Mios Su) group, a cluster of small islands off the northern coast of Western New Guinea, today we visit the little-known Amsterdam Island. Enjoy the opportunity to explore your very first West Papuan Village with local guides and cultural welcome performance. There is also opportunity to enjoy beachcombing and swim.

ROON OR AURI ISLAND

Depending on the weather and conditions, today we will enjoy either Roon Island or Auri Island. One of the highlights of Roon Island is the wreckage of a Japanese Zero fighter plane lying in shallow water and is visible to snorkellers when the weather

co-operates. The wreck has become a marine habitat and sports large corals, gorgonian fans as well as large populations of lionfish, surgeonfish, and turtles amongst other marine life. To reach Auri Island, we will navigate through picturesque island scenery before enjoying beach activities, swimming, and snorkelling in this striking location.

CENDERAWASIH BAY & KWATISORE VILLAGE

Cenderawasih Bay (translates to Bird of Paradise Bay), hosts an incredible array of marine biodiversity. The largest marine park in Indonesia, Teluk Cenderawasih National Park protects a rich marine ecosystem, and covers an area of more than 14,500 square kilometres and is home to whale sharks, dugongs, dolphins as well as over 200 known species of fish and 150 species of coral. Cenderawasih Bay is one of the few places worldwide where it's possible to swim with this endangered species. There is no guarantee that whale sharks will materialise on cue - if they do, we may have the chance to snorkel amongst them. Eyeballing these enormous fish, which are completely harmless and can grow to the length of a bus, is an experience you won't forget! Later, we will visit Kwatisore village with local guides and learn about West Papuan customs, cultures and the traditional lifestyles of the people. You will notice the difference in dancing, adornment and musical instruments of the West Papuan people in comparison to customs and culture of earlier islands visited in Raja Ampat and Spice Islands.

NUM ISLAND

An expeditionary stop for Coral Expeditions, Palau Num is an

The Small Cruise
Ship Collection
www.small-cruise-ships.com

01432 507 280 (within UK)

info@small-cruise-ships.com | small-cruise-ships.com



The Small Cruise Ship Collection

www.small-cruise-ships.com

small-cruise-ships.com

info@small-cruise-ships.com

island of the Yapen Islands group, in north-eastern Indonesia. Here we will have more time to visit traditional fishing villages on stilts and explore the waterways and lagoons, with time to swim, snorkel and a dive.

MANOKWARI

Manokwari, the capital of West Papua, is located right on the bird's head on the island of Papua, surrounded by lush rolling hills and nearby to the Arfak Mountains. There are over twenty-four different tribal groups living in Manokwari, each with its own unique language and culture. Today, guests can choose from three expeditions. Those with a keen interest in birding and wildlife may choose to travel into the Arfak Mountains to the Pegunungan Arfak Nature Reserve and enjoy the rare opportunity of exploring the higher elevations and misty tropical rainforests. Here we hope to see many endemic plants, animals and birds including cuscus possum, lesser birds of paradise, common paradise kingfisher, magnificent riflebird as well as king bird of paradise among the region's 320 bird species. Alternatively, you can choose to join a guided city tour of Manokwari and free time to explore this coastal town, the capital of the Indonesian province of West Papua. Or visit Mansinam island - a religious island where guests can learn of the history and significance of the island and participate in snorkelling and diving WWII wrecks.

DAY 19: ARRIVE IN SORONG/ DARWIN

Disembark Sorong: After an early morning arrival into Sorong at 6:00am, disembark to visit the township of Sorong before your

12:00 noon charter flight to Darwin (at an additional indicative cost of \$1200pp). Disembark Darwin: Arrive in Darwin at 7:00am, to disembark at 10:00am.

Please Note:

Itineraries are subject to change.

The Small Cruise
Ship Collection
www.small-cruise-ships.com

01432 507 280 (within UK)

info@small-cruise-ships.com | small-cruise-ships.com



The Small Cruise Ship Collection

www.small-cruise-ships.com

small-cruise-ships.com

info@small-cruise-ships.com

YOUR SHIP: CORAL ADVENTURER

YOUR SHIP: Coral Adventurer

VESSEL TYPE:

LENGTH:

PASSENGER CAPACITY:

BUILT/REFURBISHED:

Launched in 2018 with her maiden voyage in 2019, Coral Adventurer has been designed and built to take you closer to unspoilt vistas in comfort, style and safety. A culmination of two years of design and three decades of passion for expedition cruising. BIGGER IS NOT BETTER At a time when cruise ships get larger and glitzier, we remain stubbornly compact and intimate. Our ships are designed to take you to unspoilt destinations not accessible to large ships. We want you to have the luxury of space, dine with whom you please, or find your quiet corner on deck. So Coral Adventurer has just 60 spacious cabins. This preserves the intimate atmosphere we are known for without sacrificing the stability and comfort of a true ocean going vessel. BUILT FOR DISCOVERY The Coral Adventurer features the trademark dual 'Xplorer' tenders cradled on a hydraulic platform slung off the back of the ship, enabling our guests to go ashore in comfort and ease. The shallow draft of the ship enables us to go closer to shore than larger ships. Together with a renowned expedition team, this new ship will offer the most advanced expedition capabilities of any small ship afloat. BUILT FOR COMFORT With active stabilisers dampening sea motion, mostly balcony cabins, and interiors designed with the colours and

textures of tropical Queensland, the Coral Adventurer is a comfortable ship. She features promenade decks, generous communal areas that accommodate all guests, a passenger elevator, and an open kitchen where you can observe our chefs whip up small batch cuisine from locally sourced ingredients. BUILT FOR PERSONAL SERVICE The Coral Adventurer will continue a proud tradition of Australian flagged vessels with friendly and professional Australian crew. The onboard atmosphere remains refreshingly informal and intimate. Take your seat at our bridge lounge, chat with the captain at your leisure or accompany our chefs on a market tour. Food and wine features Single seating dining area with communal 'wine table' finished with Australian stone; serving buffet breakfast and lunch, and multi-course table d'hôte dinners Showcase galley visible to guests for fresh small-batch cuisine featuring Australian produce Multiple indoor and outdoor bars, including the Explorer bar on the sundeck for sunset drinks with 180 degree views Curated wine cellar featuring modestly priced boutique wines for daily drinking and exceptional vintage Australian reds. Guest comfort All outside guest cabins with en-suite bathrooms; majority have private balcony Active stabilisers to dampen sea motion Gym equipped with elliptical trainers and treadmills Passenger elevator Wi-Fi available in all

The Small Cruise Ship Collection
www.small-cruise-ships.com

01432 507 280 (within UK)

info@small-cruise-ships.com | small-cruise-ships.com



The Small Cruise
Ship Collection

www.small-cruise-ships.com



small-cruise-ships.cominfo@small-cruise-ships.com



guest areas

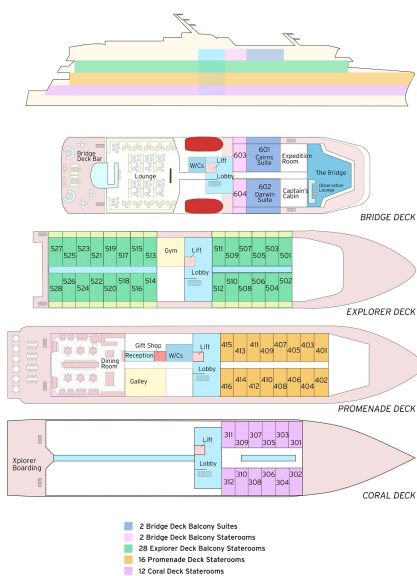
The Small Cruise Ship Collection

www.small-cruise-ships.com

small-cruise-ships.com

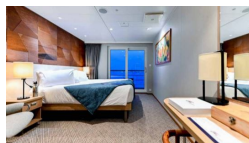
info@small-cruise-ships.com

INSIDE YOUR SHIP



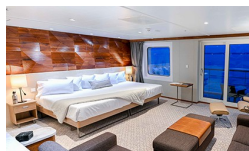
BRIDGE DECK BALCONY STATEROOM

BRIDGE DECK BALCONY SUITE



Bridge Deck Balcony Suite

CORAL DECK STATEROOM



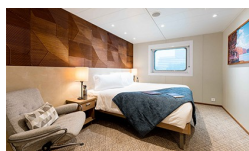
Coral Deck Stateroom

EXPLORER DECK BALCONY STATEROOM

Explorer Deck Balcony Stateroom

PROMENADE DECK STATEROOM

Promenade Deck Stateroom



The Small Cruise Ship Collection

www.small-cruise-ships.com

01432 507 280 (within UK)

info@small-cruise-ships.com | small-cruise-ships.com

The Small Cruise Ship Collection

www.small-cruise-ships.com

small-cruise-ships.com

info@small-cruise-ships.com

PRICING

06-Sep-2025 to 24-Sep-2025

| | |
|---------------------------------|---------------|
| Bridge Deck Balcony Suite | £20206 GBP pp |
| Coral Deck Stateroom | £9889 GBP pp |
| Promenade Deck Stateroom | £11689 GBP pp |
| Explorer Deck Balcony Stateroom | £15259 GBP pp |

10-Feb-2026 to 28-Feb-2026

| | |
|---------------------------------|---------------|
| Coral Deck Stateroom | £9889 GBP pp |
| Promenade Deck Stateroom | £11689 GBP pp |
| Explorer Deck Balcony Stateroom | £15259 GBP pp |
| Bridge Deck Balcony Suite | £20209 GBP pp |

28-Feb-2026 to 18-Mar-2026

| | |
|---------------------------------|---------------|
| Coral Deck Stateroom | £9889 GBP pp |
| Promenade Deck Stateroom | £11689 GBP pp |
| Bridge Deck Balcony Suite | £20209 GBP pp |
| Explorer Deck Balcony Stateroom | £15259 GBP pp |

07-Mar-2026 to 25-Mar-2026

| | |
|---------------------------------|---------------|
| BRIDGE DECK BALCONY SUITE | £20732 GBP pp |
| BRIDGE DECK BALCONY STATEROOM | £17008 GBP pp |
| PROMENADE DECK STATEROOM | £12010 GBP pp |
| CORAL DECK STATEROOM | £10174 GBP pp |
| EXPLORER DECK BALCONY STATEROOM | £15682 GBP pp |

15-Aug-2026 to 02-Sep-2026

| | |
|---------------------------------|---------------|
| Explorer Deck Balcony Stateroom | £16575 GBP pp |
| Bridge Deck Balcony Suite | £20395 GBP pp |
| Coral Deck Stateroom | £12235 GBP pp |
| Promenade Deck Stateroom | £13765 GBP pp |

02-Sep-2026 to 20-Sep-2026

| | |
|---------------------------------|---------------|
| Bridge Deck Balcony Suite | £20395 GBP pp |
| Coral Deck Stateroom | £12235 GBP pp |
| Promenade Deck Stateroom | £13765 GBP pp |
| Explorer Deck Balcony Stateroom | £16575 GBP pp |

27-Dec-2026 to 14-Jan-2027

| | |
|---------------------------------|---------------|
| Bridge Deck Balcony Suite | £20395 GBP pp |
| Coral Deck Stateroom | £12235 GBP pp |
| Promenade Deck Stateroom | £13765 GBP pp |
| Explorer Deck Balcony Stateroom | £16575 GBP pp |

14-Jan-2027 to 01-Feb-2027

| | |
|---------------------------------|---------------|
| Coral Deck Stateroom | £12235 GBP pp |
| Promenade Deck Stateroom | £13765 GBP pp |
| Bridge Deck Balcony Suite | £20395 GBP pp |
| Explorer Deck Balcony Stateroom | £16575 GBP pp |