

The Small Cruise Ship Collection

www.small-cruise-ships.com

small-cruise-ships.com

info@small-cruise-ships.com

PURE EAST ASIA – BETWEEN ZEN AND ZEITGEIST SMALL SHIP CRUISE

On the coasts of China, South Korea and Japan, there is no limit to the wonders: from the venerable splendour of ancient cultural treasures to futuristic metropolises, a fascinating panorama of tradition and modernity unfolds.



ITINERARY

Day 1 Hong Kong/China, departure 22.00 hrs

Day 2 Relaxation at sea

Day 3 Xiamen/Fujian/China, 08.00 - 18.00 hrs

Xiamen owes its name, meaning "door to the house", to its centuries-old role as the gateway to China's treasures. It features an impressive contrast between the vibrant urban life of a metropolis and charming Gulangyu: a pedestrian-only island

The Small Cruise Ship Collection

www.small-cruise-ships.com

01432 507 280 (within UK)

info@small-cruise-ships.com | small-cruise-ships.com



The Small Cruise Ship Collection

www.small-cruise-ships.com

small-cruise-ships.com

info@small-cruise-ships.com

with idyllic scenery including green parks, beaches and picturesque streets with colonial architecture. The former 19th-century tea trading port has maintained its importance as an international hub, while the sleek urban parks along the coast of Xiamen ensure a peaceful, relaxed atmosphere today.

Day 4 Relaxation at sea

Day 5 Shanghai/China, arrival 22.00 hrs

Day 6 Shanghai/China, departure 24.00 hrs

Shanghai is the leading industrial city in the People's Republic of China and one of the biggest cities in the world. It produces state-of-the art technology, is a global financial centre and presents itself with a breathtakingly futuristic skyline. The city underwent a Golden Age in the 1920s and 1930s, which today is reflected in impressive colonial architecture and art deco buildings. These days, Shanghai offers a unique interplay between luxury and modern, with exclusive hotels, as well as the main shopping streets Nanjing Lu and Huaihai Lu, which are an inviting place for a stroll. Enjoy the atmosphere until the evening thanks to a long lay time.

Days 7 - 8 Relaxation at sea

Day 9 Tianjin (Beijing)/China, arrival 07.00 hrs

Tianjin, one of China's most prosperous and modern cities, is famous for its diverse cultural scene - and is your starting point for exploring the megacity of Beijing. The cultural and political centre of China fascinates visitors with a multitude of sights from different periods of the imperial era. The Forbidden City with its countless palaces, the legendary Temple of Heaven and the sprawling Tiananmen Square bear witness to Beijing's imperial

past. You will encounter the modern face of this metropolis of millions in the trendy 798 Art District, in architectural masterpieces such as the CCTV Tower, or along the luxurious shopping boulevards. Thanks to an overnight stay, you can look forward to plenty of time for in-depth discoveries.

Day 10 Tianjin (Beijing)/China, departure 24.00 hrs

Days 11 - 12 Relaxation at sea

Day 13 Busan/South Korea, 08.00 - 20.00 hrs

Busan stood in Seoul's shadow for a long time, before becoming a popular destination in its own right. Today, South Korea's second-largest city attracts visitors with its idyllic coastline, busy markets and vibrant way of life. Highlights include the 1.5 km (just under a mile) long Haeundae Beach and Geumjeongsan Mountain. From the mountain range's highest peak, Godangbong, you can enjoy breathtaking views over Busan. The famous Haedong Yonggungsa Temple also offers some fascinating insights and outlooks thanks to its spectacular location on the edge of a cliff. Art enthusiasts will find what they are looking for in the vibrant Gamcheon Culture Village, where local artists sell their works in colourful houses.

Day 14 Fukuoka/Japan, 07.00 - 18.00 hrs

In lively Fukuoka, you can experience the fast pace of Japanese civilisation, whose origins date back to 300 BC. The authentic atmosphere is particularly apparent at the rustic Yatai street stalls, where locals slurp ramen and tell each other the latest news. Fukuoka is an attractive city with modern highlights including the enormous Canal City shopping and entertainment centre, which has an artificial canal flowing through it. Cultural and historic gems like the Dazaifu Temple stand as testament to

The Small Cruise Ship Collection

www.small-cruise-ships.com

01432 507 280 (within UK)

info@small-cruise-ships.com | small-cruise-ships.com



The Small Cruise Ship Collection

www.small-cruise-ships.com

small-cruise-ships.com

info@small-cruise-ships.com

the city's importance in the seventh century, when it was the political and cultural centre of Kyushu Island. The history of the Futsukaichi Onsen hot springs go back just as far and still today offer a great place for a relaxing bath.

Day 15 Hiroshima/Japan, 08.00 - 18.00 hrs

Hiroshima symbolises a very eventful period in modern history - your exploration of the area will be shaped by memorials. Tracing the tragic events of 1945 will take you to the Peace Memorial Park, designed by star architect Kenzo Tange. Experience Hiroshima as an impressive place of historic reflection as well as a symbol of hope and new beginnings. Hiroshima Castle, also known as Rijo, will take you back to times long past. It is a perfect example of Japanese architecture in the traditional pagoda style and its museum tells the story of the samurai. With its variety of miniature landscapes, the Shukkeien Garden displays Japanese landscape gardening as an art form: pause for a while at the tea houses and koi carp ponds to find inner peace and serenity.

Day 16 Uno Port (Tamano)/Japan, 08.00 - 22.00 hrs

In a picturesque location on the Seto Inland Sea, Uno Port welcomes you with a lively harbour atmosphere and a distinctive creative flair. Enjoy the view across the expansive waters with Japan's famous "art islands" of Naoshim, Teshima and Shodoshima as you stroll along the promenade and soak up the ambience. Original sculptures can be found here as well as boutiques selling local designs, while restaurants serving regional fish specialities invite you to enjoy yourself and while away some time. Thanks to the long lay time, you will have the opportunity to enjoy the maritime atmosphere and explore the sights of the surrounding area until the evening hours.

Day 17 Kobe/Japan, arrival 08.00 hrs

Kobe is a modern, international city with many unique attractions to offer. These include settlements in Kitano with its former foreign residences, the lively Nankinmachi Chinatown and the Nada Sake district. The Rokko mountain range attracts hikers with spectacular views, while Arima Onsen is known for its thermal springs. A cable car takes visitors up to the Kobe Nunobiki Herb Garden with its beautiful plants and flowers and in the port district, visitors can find the Kobe Daibutsu, one of Japan's three great Buddha statues. You can gather exciting impressions until the evening and during the next day, because your ship has an overnight lay time here.

Day 18 Kobe/Japan, departure 18.00 hrs

Day 19 Relaxation at sea

Day 20 Yokohama/Japan, arrival 06.00 hrs

Please note:

* The shore activities are not included in the cruise price and are in the planning stage. Subject to change.

The Small Cruise Ship Collection

www.small-cruise-ships.com

01432 507 280 (within UK)

info@small-cruise-ships.com | small-cruise-ships.com

The Small Cruise Ship Collection

www.small-cruise-ships.com

small-cruise-ships.com

info@small-cruise-ships.com

YOUR SHIP: EUROPA

YOUR SHIP: Europa

VESSEL TYPE:

LENGTH:

PASSENGER CAPACITY:

BUILT/REFURBISHED:

Extensive space for a maximum of 400 guests A crew-to-guest ratio of almost one to one Outside suites only, most with a veranda Five restaurants for the ultimate in culinary indulgence - including THE GLOBE by three-star chef Kevin Fehling Top-class entertainment: experience international artists and experts live on board EUROPA Refresh: new fitness and wellness concepts for even more well-being MS EUROPA is an award-winning luxury cruise ship renowned for setting global standards in refined small-ship cruising. Accommodating a maximum of just 400 guests, the ship offers an intimate and highly personalised experience, supported by an almost one-to-one crew-to-guest ratio. Designed around the concept of casual luxury, EUROPA combines spacious surroundings, attentive service, and elegant all-suite accommodation, with all suites featuring ocean views and most offering private verandas. Onboard, guests can enjoy five exceptional restaurants, including fine dining concepts created in collaboration with acclaimed chefs, alongside world-class entertainment, wellness facilities, and thoughtfully curated enrichment experiences. The ship's smaller size allows access to unique itineraries and exclusive ports beyond the reach of larger vessels, while recent EUROPA Refresh

enhancements have introduced updated fitness and wellness concepts for an even more elevated onboard experience. Blending sophistication, comfort, and flexibility, MS EUROPA delivers a truly premium voyage to destinations



worldwide.

The Small Cruise Ship Collection

www.small-cruise-ships.com

01432 507 280 (within UK)

info@small-cruise-ships.com | small-cruise-ships.com

The Small Cruise Ship Collection

www.small-cruise-ships.com

small-cruise-ships.com

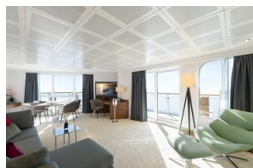
info@small-cruise-ships.com

INSIDE YOUR SHIP

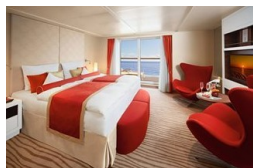
Penthouse Deluxe Suite



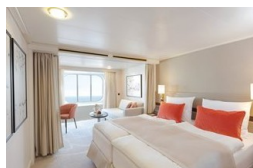
Penthouse Grand Suite



SPA Suite



Suite with panorama window



Veranda Suite Cat. 4-5

Veranda Suite Cat. 6-7



The Small Cruise
Ship Collection

www.small-cruise-ships.com

small-cruise-ships.com

info@small-cruise-ships.com

PRICING

01-Mar-2028 to 18-Mar-2028

Suite with panorama window	£9065 GBP pp
Veranda Suite Cat. 4-5	£11589 GBP pp
Veranda Suite Cat. 6-7	£15045 GBP pp
SPA Suite	£16245 GBP pp
Penthouse Deluxe Suite	£25875 GBP pp
Penthouse Grand Suite	£41039 GBP pp