



The Small Cruise  
Ship Collection

www.small-cruise-ships.com



small-cruise-ships.com

info@small-cruise-ships.com

## PURE BALTIC SEA: HANSEATIC LEAGUE, HYGGE AND HIGHLIGHTS CRUISE

Welcome to plenty of diversity: where the timeless heritage of the Hanseatic League and kings shines brightly and hospitable design metropolises set new trends, late summer shows its golden side.



### ITINERARY

Day 1 Individual travel arrangements to cruise departure point Hamburg/Germany, departure 19.00 hrs

Day 2 Daytime passage through the Kiel Canal/Germany

Kiel Canal is an impressive waterway connecting the North Sea to the Baltic. It was opened in 1895 and is around 98 km (61 mi.) long. The canal allows large cargo and passenger ships to avoid the dangerous journey around Scandinavia, saving time and money. Every year, more than 30,000 ships pass through the canal, making it the one of the busiest waterways in the

The Small Cruise  
Ship Collection

www.small-cruise-ships.com

01432 507 280 (within UK)

info@small-cruise-ships.com | small-cruise-ships.com



## The Small Cruise Ship Collection

[www.small-cruise-ships.com](http://www.small-cruise-ships.com)

[small-cruise-ships.com](http://small-cruise-ships.com)

[info@small-cruise-ships.com](mailto:info@small-cruise-ships.com)

world. The impressive locks and beautiful countryside on its banks make a journey along the canal a truly fascinating experience.

### Day 3 Copenhagen/Denmark 08.00 - 19.00 hrs

With its mix of world-famous landmarks and modern charm, Copenhagen appeals to every visitor. The Little Mermaid at Langelinie is the city's most famous attraction. The colourful waterfront at Nyhavn with its lively cafes is a great place to while away some time, while Amalienborg Palace and the Tivoli amusement park will take you on a journey through the past and present of the Danish capital. In its majestic setting amidst well-kept rose gardens, Rosenborg Castle is home to the Danish Crown Jewels. As well as its historic sites, Copenhagen is a paradise for design fans: the cubist Royal Library and the Royal Opera House are outstanding examples of modern Scandinavian architecture.

### Day 4 Gudhjem/Bornholm/Denmark, 08.00 - 22.00 hrs

An idyllic picture-postcard setting characterises the atmosphere of Gudhjem, officially Denmark's smallest town with around 730 inhabitants. Red-tiled roofs, steep alleyways and the spectacular location on the cliffs of Bornholm's north coast bring out the explorer in you. The smoke stacks visible everywhere tell of the island's great fishing history. Even today, you can still enjoy authentic seafood specialities, such as a serving of Sol over Gudhjem ("sun over Gudhjem") - fresh rye bread with smoked herring, chives and raw egg yolk. The beautiful beaches along the coast near Gudhjem promise perfect relaxation, while the four famous round churches further inland are well worth a visit.

### Day 5 Kalmar/Sweden, 07.00 - 14.00 hrs

A charming blend of history and vibrant culture awaits visitors to Kalmar on the east coast of Sweden. The cobbled streets of the old town, the city's traditional buildings and impressive Kalmar Castle provide the beautiful backdrop to bring the rich heritage of the city to life. The harbour provides plenty of opportunities for relaxation at its cafes and restaurants with views over the water. With its lively cultural scene, art galleries and theatres, the city has plenty of variety to keep visitors entertained.

### Day 6 Riga/Latvia, arrival 13.00 hrs

At the estuary of the River Daugava lies a pearl of the Baltic: Riga offers an incomparable mix of history and modernity. While magnificent art nouveau facades adorn the outer districts of Latvia's capital city, the enchanting old town with its well-preserved medieval buildings was designated a UNESCO World Heritage Site in 1997. At its centre near the House of the Blackheads, the tall tower of St. Peter's Church rises high above the rooftops and is a magnificent sight. Riga is particularly lively thanks to its varied music and art scene - western influences combine with traditional Latvian elements and ensure its unique charm. The ship will stay overnight - perfect for enjoying your time to the fullest.

### Day 7 Riga/Latvia, departure 13.30 hrs

### Day 8 Tallinn/Estonia, arrival 11.30 hrs

Picturesque Tallinn lies right on the Baltic coast and is enchanting with its medieval old town, which has been a UNESCO World Heritage Site since 1997. Surrounded by a city wall with 26 defence towers, Estonia's capital has charming little streets, historic buildings and a fascinating mix of architectural styles. Toompea Hill, Tall Hermann tower and the impressive St. Mary's Cathedral offer a wonderful insight into the

The Small Cruise Ship Collection

[www.small-cruise-ships.com](http://www.small-cruise-ships.com)

01432 507 280 (within UK)

[info@small-cruise-ships.com](mailto:info@small-cruise-ships.com) | [small-cruise-ships.com](http://small-cruise-ships.com)



## The Small Cruise Ship Collection

[www.small-cruise-ships.com](http://www.small-cruise-ships.com)

[small-cruise-ships.com](http://small-cruise-ships.com)

[info@small-cruise-ships.com](mailto:info@small-cruise-ships.com)

city's history, while the Town Hall Square in the centre of the old town is a lively place to explore. The overnight lay time allows you to relax and unwind at the end of the day.

**Day 9 Tallinn/Estonia, departure 07.00 hrs & Helsinki/Finland, arrival 13.00 hrs**

Arriving in the port of Helsinki is an experience in itself: Finland's capital lies in a picturesque location on a peninsula, surrounded by the idyllic little islands of the Gulf of Finland. Helsinki is a melting pot of lively city life and lush green nature. The Kauppatori market square is an attractive place with its fruit and souvenir stalls, while the historic Vanha Kauppahalli indoor market offers local delicacies. Uspenski Cathedral is captivating with its grand architecture and wonderful views over the city. Helsinki Cathedral, the city's snow-white landmark with green domes, is no less impressive. Explore this city full of contrasts on a discovery tour and enjoy the interplay between culture, nature and Nordic charm. Take your time to soak up the atmosphere, as the ship will stay overnight.

**Day 10 Helsinki/Finland, departure 15.00 hrs**

**Day 11 Stockholm/Sweden, arrival 09.00 hrs**

Stockholm is an enchanting capital thanks to its unique location on 14 islands, which are connected to each other by a multitude of bridges. Set between Lake Malaren and the Baltic Sea, the city is often referred to as the "Venice of the North". In the old town, Gamla Stan, with its winding streets and historic buildings, you will find stylish bistros offering New Nordic Cuisine. On the neighbouring island is the impressive baroque Royal Palace, while the Vasa Museum with its restored war ship brings the city's fascinating maritime history to life. You can gather exciting impressions until the evening, because your ship

has an overnight lay time here.

**Day 12 Stockholm/Sweden, departure 06.00 hrs**

**Day 13 Gdansk/Poland, 07.00 – 17.00 hrs**

Gdansk is a city full of history, culture and unique scenery. The city looks back over more than 1,000 years of history, including rule by the Teutonic Order, its heyday as a wealthy Hanseatic city, and the partitions of Poland in the 18th century. Today, Gdansk is a cosmopolitan city with an interesting past. A walk through the old city gates, through the Long Market or along the Motlawa provides a variety of views and leads you to many shops, restaurants and cafes, where you can take a relaxing break. Gdansk combines historic grandeur with modern charm and is a real highlight on the Polish Baltic coast.

**Day 14 Evening passage through the Kiel Canal/Germany**

**Day 15 Hamburg/Germany, arrival 07.00 hrs Individual travel arrangements from cruise arrival point**

Please note:

\* The shore activities are not included in the cruise price and are in the planning stage. Subject to change.

The Small Cruise Ship Collection

[www.small-cruise-ships.com](http://www.small-cruise-ships.com)

**01432 507 280** (within UK)

[info@small-cruise-ships.com](mailto:info@small-cruise-ships.com) | [small-cruise-ships.com](http://small-cruise-ships.com)



# The Small Cruise Ship Collection

www.small-cruise-ships.com



small-cruise-ships.com

info@small-cruise-ships.com

## YOUR SHIP: EUROPA

**YOUR SHIP:** Europa

**VESSEL TYPE:**

**LENGTH:**

**PASSENGER CAPACITY:**

**BUILT/REFURBISHED:**

Extensive space for a maximum of 400 guests A crew-to-guest ratio of almost one to one Outside suites only, most with a veranda Five restaurants for the ultimate in culinary indulgence - including THE GLOBE by three-star chef Kevin Fehling Top-class entertainment: experience international artists and experts live on board EUROPA Refresh: new fitness and wellness concepts for even more well-being MS EUROPA is an award-winning luxury cruise ship renowned for setting global standards in refined small-ship cruising. Accommodating a maximum of just 400 guests, the ship offers an intimate and highly personalised experience, supported by an almost one-to-one crew-to-guest ratio. Designed around the concept of casual luxury, EUROPA combines spacious surroundings, attentive service, and elegant all-suite accommodation, with all suites featuring ocean views and most offering private verandas. Onboard, guests can enjoy five exceptional restaurants, including fine dining concepts created in collaboration with acclaimed chefs, alongside world-class entertainment, wellness facilities, and thoughtfully curated enrichment experiences. The ship's smaller size allows access to unique itineraries and exclusive ports beyond the reach of larger vessels, while recent EUROPA Refresh

enhancements have introduced updated fitness and wellness concepts for an even more elevated onboard experience. Blending sophistication, comfort, and flexibility, MS EUROPA delivers a truly premium voyage to destinations



worldwide.



The Small Cruise Ship Collection

www.small-cruise-ships.com

01432 507 280 (within UK)

info@small-cruise-ships.com | small-cruise-ships.com



# The Small Cruise Ship Collection

[www.small-cruise-ships.com](http://www.small-cruise-ships.com)



[small-cruise-ships.com](http://small-cruise-ships.com)

[info@small-cruise-ships.com](mailto:info@small-cruise-ships.com)

## INSIDE YOUR SHIP

Penthouse Deluxe Suite



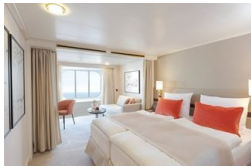
Penthouse Grand Suite



SPA Suite



Suite with panorama window



Veranda Suite Cat. 4-5

Veranda Suite Cat. 6-7



The Small Cruise Ship Collection

[www.small-cruise-ships.com](http://www.small-cruise-ships.com)

01432 507 280 (within UK)

[info@small-cruise-ships.com](mailto:info@small-cruise-ships.com) | [small-cruise-ships.com](http://small-cruise-ships.com)



# The Small Cruise Ship Collection

[www.small-cruise-ships.com](http://www.small-cruise-ships.com)



[small-cruise-ships.com](http://small-cruise-ships.com)

[info@small-cruise-ships.com](mailto:info@small-cruise-ships.com)

## PRICING

11-Aug-2028 to 25-Aug-2028

Suite with panorama window	£5849 GBP pp
Veranda Suite Cat. 4-5	£8155 GBP pp
Veranda Suite Cat. 6-7	£10589 GBP pp
SPA Suite	£11415 GBP pp
Penthouse Deluxe Suite	£18205 GBP pp
Penthouse Grand Suite	£28875 GBP pp



The Small Cruise Ship Collection

[www.small-cruise-ships.com](http://www.small-cruise-ships.com)

01432 507 280 (within UK)

[info@small-cruise-ships.com](mailto:info@small-cruise-ships.com) | [small-cruise-ships.com](http://small-cruise-ships.com)